

LAMBOURNE SIDs

LONDON/ Gatwick

BIGGIN SIDs

LONDON/ Gatwick

GENERAL INFORMATION

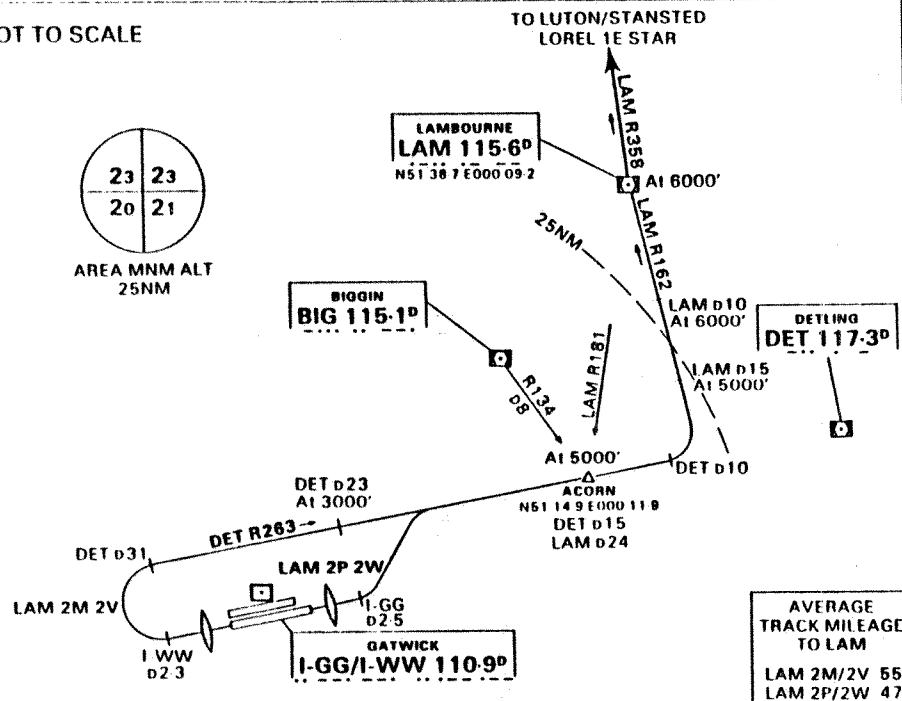
- SIDs reflect Noise Preferential Routeings.
- Initial climb straight ahead to 702' ONH (500' OFE).
- Cross Noise Monitoring Points not below 1202' ONH (1000' OFE) thereafter maintain minimum climb gradient of 4% to 3000' to comply with Noise Abatement requirements.

Gnd speed	kt	75	100	150	200	250	300
4% (244' per nm)	ft/min	305	407	610	813	1017	1220

- En Route cruising level will be issued after take-off by 'London Control'.
- Max IAS 250kts below FL100 unless otherwise authorised.
- SIDs for emergency Rwy 08L/26R are identical to existing SIDs. Rwy codes VICTOR for 26R and WHISKY for 08L have been allocated.

TRANSITION ALT
6000'

NOT TO SCALE



AVERAGE TRACK MILEAGE TO LAM
LAM 2M/2V 55
LAM 2P/2W 47

SID	RWY	ROUTEING (Incl. Noise Preferential Routeing)	ALTITUDES	AIRWAY ROUTE
LAM 2M LAM 2V	26L 26R*	Straight ahead until I-WW d2.3 (1.5nm past 08R ILS MM) then turn right to intercept DET VOR R263 by DET d31. At DET d10 turn left to intercept LAM VOR R162 to LAM VOR. At LAM VOR continue on LOREL 1E STAR.	Cross DET d23 at 3000' DET d15 (ACORN) at 5000' LAM d15 at 5000' LAM d10 at 6000' LAM VOR at 6000'	
LAM 2P LAM 2W	08R 08L*	Straight ahead until I-GG d2.5 (1.5nm past 26L ILS MM) then turn left to intercept DET VOR R263 to DET d10. At DET d10 turn left to intercept LAM VOR R162 to LAM VOR. At LAM VOR continue on LOREL 1E STAR.	Cross DET d15 (ACORN) at 5000' LAM d15 at 5000' LAM d10 at 6000' LAM VOR at 6000'	

- * Rwy 08L: Maintain minimum 5.5% climb gradient to 402' ONH (200' OFE)
- * Rwy 26R: Owing to proximity of a 30' high earth bank to the end of the clearway, it is not possible to publish a minimum required climb gradient for departures from this Rwy. See Aerodrome Obstacle Chart ICAO Type A - Operating Limitations.

CHANGE NEW PROCEDURES

AERO INF DATE 6 Apr 89

GENERAL INFORMATION

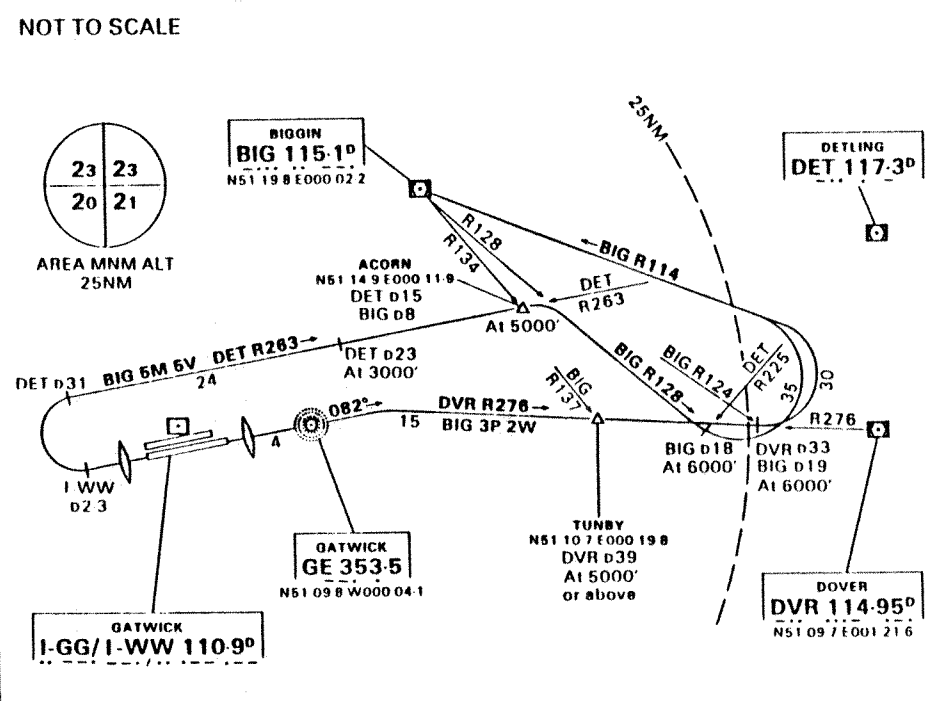
- SIDs reflect Noise Preferential Routeings.
- Initial climb straight ahead to 702' ONH (500' OFE).
- Cross Noise Monitoring Points not below 1202' ONH (1000' OFE) thereafter maintain minimum climb gradient of 4% to 3000' to comply with Noise Abatement requirements.

Gnd speed	kt	75	100	150	200	250	300
4% (244' per nm)	ft/min	305	407	610	813	1017	1220

- En Route cruising level will be issued after take-off by 'London Control'.
- Max IAS 250kts below FL100 unless otherwise authorised.
- SIDs for emergency Rwy 08L/26R are identical to existing SIDs. Rwy codes VICTOR for 26R and WHISKY for 08L have been allocated.

TRANSITION ALT
6000'

NOT TO SCALE



SID	RWY	ROUTEING (Incl. Noise Preferential Routeing)	ALTITUDES	AIRWAY ROUTE
BIG 5M BIG 5V	26L 26R*	Straight ahead until I-WW d2.3 (1.5nm past 08R ILS MM) then turn right to intercept DET VOR R263 by DET d31. At DET d15 (ACORN intersection) turn right onto BIG VOR R128. At BIG d18 (DET VOR R225) turn left to intercept BIG VOR R114 to BIG VOR.	Cross DET d23 at 3000' DET d15 (ACORN) at 5000' BIG VOR R128/d18 (DET VOR R225) at 6000'	For landing at LONDON/ Heathrow or NORTHOLT only.
BIG 3P BIG 2W	08R 08L*	Straight ahead via GE, maintain track 082 to intercept DVR VOR R276. At DVR d33 (BIG VOR R124/d19) turn left to intercept BIG VOR R114 to BIG VOR.	Cross DVR d39 (BIG VOR R137/ TUNBY intersection) at 5000' or above DVR d33 (BIG VOR R124/d19) at 6000'	

- * Rwy 08L: Maintain minimum 5.5% climb gradient to 402' ONH (200' OFE).
- * Rwy 26R: Owing to proximity of a 30' high earth bank to the end of the clearway, it is not possible to publish a minimum required climb gradient for departures from this Rwy. See Aerodrome Obstacle Chart ICAO Type A - Operating Limitations.

CHANGE ALTITUDES

AERO INF DATE 6 Apr 89