

CIVIL AVIATION AUTHORITY – SAFETY REGULATION GROUP

MICROLIGHT TYPE APPROVAL DATA SHEET (TADS)

**NO: BM-69 ISSUE: 1**

TYPE: AirBorne Edge XT-912

- (1) MANUFACTURER: AirBorne WindSports Pty Ltd, Unit 22/30 Kalaroo Road,  
PO Box 7042, Redhead 2290, NSW, Australia
- (2) UK IMPORTER: AirBorne Australia in UK
- (3) CERTIFICATION: Primary Category  
BCAR Section S Issue 2 dated 31<sup>st</sup> August 1999
- (4) DEFINITION OF  
BASIC STANDARD: Type Certificate VA 513
- (5) COMPLIANCE WITH THE MICROLIGHT DEFINITION

(a) MTOW	445 kg
(b) No. Seats	2
(c) Maximum Wing Loading	32.96 kg/m <sup>2</sup>
(d) V <sub>so</sub>	35 KCAS
(e) Permitted range of pilot weights	55-100 kg front seat 0-100kg rear seat
Total Maximum crew weight	200 kg
(f) Typical (ZFW)	219 kg
(g) ZFW + 172 kg crew + 1 hr fuel (18 litres / 13 kg)	404 kg
(h) ZFW + 86 kg pilot + full fuel ( 70 litres / 49 kg)	354 kg
(i) Max ZFW	258 kg

CIVIL AVIATION AUTHORITY – SAFETY REGULATION GROUP

MICROLIGHT TYPE APPROVAL DATA SHEET (TADS)

**NO: BM-69 ISSUE: 1**

(6) POWER PLANTS

Designation	<i>Rotax 912 UL 2</i>			
Engine Type	<i>4 Cylinder 4 Stroke</i>			
Reduction Gear	<i>2.4:1</i>			
Exhaust System	<i>Rotax side mounted</i>			
Intake System	<i>K7N intake filter With AirBorne carb body heater</i>			
Propeller Type	<i>Bolly Bos 3</i>			
Propeller Dia x Pitch	<i>66 " 20 deg at 24" radius</i>			
Noise Type Cert No.	<i>185M</i>			
AAN approving configuration	<i>29042</i>			

(7) MANDATORY LIMITATIONS:

(A) Max Take-Off Weight	445 kg		
(B) CG Limits	<i>N/A not critical, flex wing with defined hang position on keel</i>		
(C) CG datum	(See annex C).		
(D) Cockpit Loadings	Front	Rear	Total
(Solo from front seat only)	Min 55 kg	0 kg	55 kg
	Max 100kg	100 kg	200 kg
(E) Never Exceed Speed	85 KIAS		
(F) Manoeuvring Speed	80 IAS		
(G) Permitted Manoeuvres	45° Nose up / 45° nose down Non Aerobatic, max bank 60° Normal acceleration limits, +4 / -0g		
(H) Fuel Contents (Max Useable)	67 Litres		

CIVIL AVIATION AUTHORITY – SAFETY REGULATION GROUP

MICROLIGHT TYPE APPROVAL DATA SHEET (TADS)

**NO: BM-69 ISSUE: 1**

(I) Power Plant See Table

Engine	Rotax 912 UL2			
Max RPM	5800 for 5mins 5500 continuously			
MAX CHT	150°C			
MAX EGT	800°C			
Fuel Spec	En228 Premium/Regular. Super grade gasoline, lead free, min RON 90, or AVGAS 100LL.*			
Engine Oil Spec	API SF or SG semi synthetic 4 stroke motorcycle engine oil.			
Gearbox oil spec	Common supply with engine			
Fuel/Oil Mix	N/A			
Coolant Temperature	150°C			
Oil Pressure	7 bar max (after cold start) 2-5 bar above 3500 rpm 0.8 bar min below 3500 rpm			
Oil Temperature	50-140°C			
Fuel Pressure	0.15-0.4 bar			

\*Unleaded preferred. See Operator's Manual for limitations on AVGAS.

(8) INSTRUMENTS REQUIRED:

ASI	Altimeter	RPM	CHT / EGT	Compass	Coolant temp	Fuel Pressure	VSI	Slip ball
Required (0-100 kts.)	Required 0-20,000 ft	0-6000	0-200°C 0-1000°C	No	Measured by CHT sensor	No	Option included +/- 1500 fpm	N/A 2 axis control

CIVIL AVIATION AUTHORITY – SAFETY REGULATION GROUP

MICROLIGHT TYPE APPROVAL DATA SHEET (TADS)

**NO: BM-69 ISSUE: 1**

(9) CONTROL DEFLECTIONS:

N/A, weight shift control limits defined by structure geometry.

Control bar move right =	roll left
Control bar push out =	pitch up
Tighten trim cable =	slow trim
Push left pedal =	taxi steering right
Push left toe =	brakes on
Push right toe =	throttle open
Hand throttle forward =	throttle open
Ignition switches up =	switch on
Choke forward =	choke on
Tap aligned with body =	fuel on

(10) PILOT'S NOTES, MAINTENANCE MANUALS REFERENCES:

10.1 Manuals approved for use with this aircraft.

- (a) Pilot's Operating Handbook XT 912 Streak (Issue 1.0)
- (b) XT 912 Owner Maintenance Manual (Issue 1.0)
- (c) Streak 3 Owner Maintenance Manual (Issue 1.0)
- (d) Rotax 912 UL Operators Manual

10.2 The following placards are to be fitted:-

Aircraft placards are outlined in the pilot's Operating Handbook

(a) Flight Limitations Placard (to be visible to pilot)

See Annex D.

(b) Engine Limitations Placard (to be located near to engine instruments)

The engine limitations are programmed into the Skydat GX2 Engine Indication System and the engine parameter indication will flash if a limitation of that parameter has been exceeded.

(c) Fuel Limitations Placard (to be located near to filler cap)

See Annex D.

(d) Switches

See Annex D.

CIVIL AVIATION AUTHORITY – SAFETY REGULATION GROUP

MICROLIGHT TYPE APPROVAL DATA SHEET (TADS)

**NO: BM-69 ISSUE: 1**

- (11) MANDATORY MODIFICATIONS / SERVICE BULLETINS / AIRWORTHINESS DIRECTIVES ETC:

See Annex A for required modifications.

Annual Bettsometer test with a 1.2mm diameter needle, with wing sails fitted and tensioned to flight is to be carried out to:

Upper & lower surface: 1360 grams.

Stitches: 1360 grams using a 1mm diameter hook, pull upwards

CASA AD/ROTAX/21

(ref: <http://casa.gov.au/avreg/aircraft/ad/ADfiles/piston/rotax/ROTAX-021.pdf> )

- (12) MINIMUM PERFORMANCE AT MAX TAKE-OFF WEIGHT

Rate of Climb: 825 fpm at 49 kts IAS.

Stall or Minimum Flying Speed: 35 KIAS at MTOW / idle.

CIVIL AVIATION AUTHORITY – SAFETY REGULATION GROUP

MICROLIGHT TYPE APPROVAL DATA SHEET (TADS)

**NO: BM-69 ISSUE: 1**

Issue History

<u>Issue No.</u>		<u>Reason and signatory</u>
1	Initial Issue	

A C Love

CIVIL AVIATION AUTHORITY – SAFETY REGULATION GROUP

MICROLIGHT TYPE APPROVAL DATA SHEET (TADS)

**NO: BM-69 ISSUE: 1**

Illustration of Aircraft - 3 View

Illustration of Aircraft - Photograph



CIVIL AVIATION AUTHORITY – SAFETY REGULATION GROUP

MICROLIGHT TYPE APPROVAL DATA SHEET (TADS)

**NO: BM-69 ISSUE: 1**

ANNEX A – MANDATORY MODIFICATIONS

1. None

ANNEX B - APPROVED OPTIONAL MODIFICATIONS

The installation of all optional modifications is to be inspected by a BMAA inspector and an entry made in the appropriate logbook(s). Note that other approved modifications may exist which are not listed here.

Part Number	Description	Notes	Issued
106526	Training bars	Optional	
105723	BRS Parachute	Optional	

ANNEX C

WEIGHING INFORMATION

CG Datum:            Nose wheel axle

<b>ITEM</b>	<b>WEIGHT kg</b>
Typical ZFW XT 912 Aircraft	219
Streak 3 Wing	50
Typical ZFW XT 912 Base	169
<b>OPTIONAL ITEMS</b>	
BRS Parachute	11
Antenna and cable	0.40
Intercom and PTT	0.43
Instructor Bars	1.4
Microair Radio and cabling	.57



CIVIL AVIATION AUTHORITY – SAFETY REGULATION GROUP

MICROLIGHT TYPE APPROVAL DATA SHEET (TADS)

NO: BM-69 ISSUE: 1

ANNEX D

EXAMPLE PLACARDS

(a) Flight Limitations Placard (to be visible to pilot)

<b>ROTAX 912 UL ENGINE LIMITATIONS</b>		
	ENGINE RPM	MAX EGT
5 MINUTES MAX	5800 rpm	880 Deg C
CONTINUOUS	5500 rpm	850 Deg C
	MIN	MAX
OIL PRESSURE	0.8 bar	7 bar
OIL TEMPERATURE	50 Deg C	140 Deg C
CYLINDER HEAD TEMP		150 Deg C
<b>LOADING LIMITATIONS</b>		
EMPTY WEIGHT		
MAX TAKEOFF WEIGHT		
MAX WEIGHT OF OCCUPANTS		<b>180kg</b>
FLY SOLO FROM FRONT SEAT ONLY		

PART No.105705

<b>AIRBORNE WINDSPORTS Pty. Ltd.</b> Newcastle, NSW, Australia www.airborne.com.au	
AIRCRAFT TYPE	<b>EDGE XT</b>
<b>FLIGHT LIMITATIONS</b> DO NOT PITCH NOSE DOWN OR NOSE UP MORE THAN 45 DEGREES FROM HORIZONTAL. DO NOT EXCEED 60 DEGREES OF BANK NO NEGATIVE G NO AEROBATIC MANOEUVRES NO WHIPSTALLS NO STALLED SPIRAL DESCENTS	
<b>WARNINGS</b> NO SMOKING ALWAYS PREFLIGHT AIRCRAFT ENSURE MAST LOCKED IN POSITION BEFORE STARTING ENGINE	

PART No.105706

Empty weight must match the most recent W&CG report for the aircraft.

80mm

80mm

PART NO 106617

(b) Engine Limitations Placard (to be located near to engine instruments)

The engine limitations are programmed into the Rotax FLYDAT Engine Indication System and the engine parameter indication will flash if a limitation of that parameter

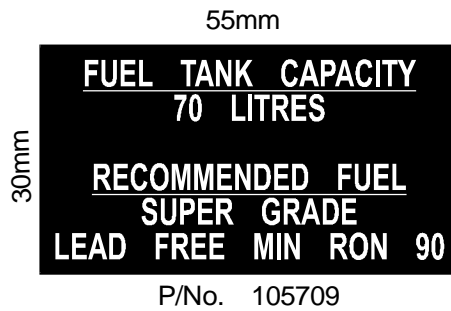
CIVIL AVIATION AUTHORITY – SAFETY REGULATION GROUP

MICROLIGHT TYPE APPROVAL DATA SHEET (TADS)

NO: BM-69 ISSUE: 1

has been exceeded.

(c) Fuel Limitations Placard (to be located near to filler cap)



(d) Switches

All switches are to be marked with function and sense (up=on, down=off).