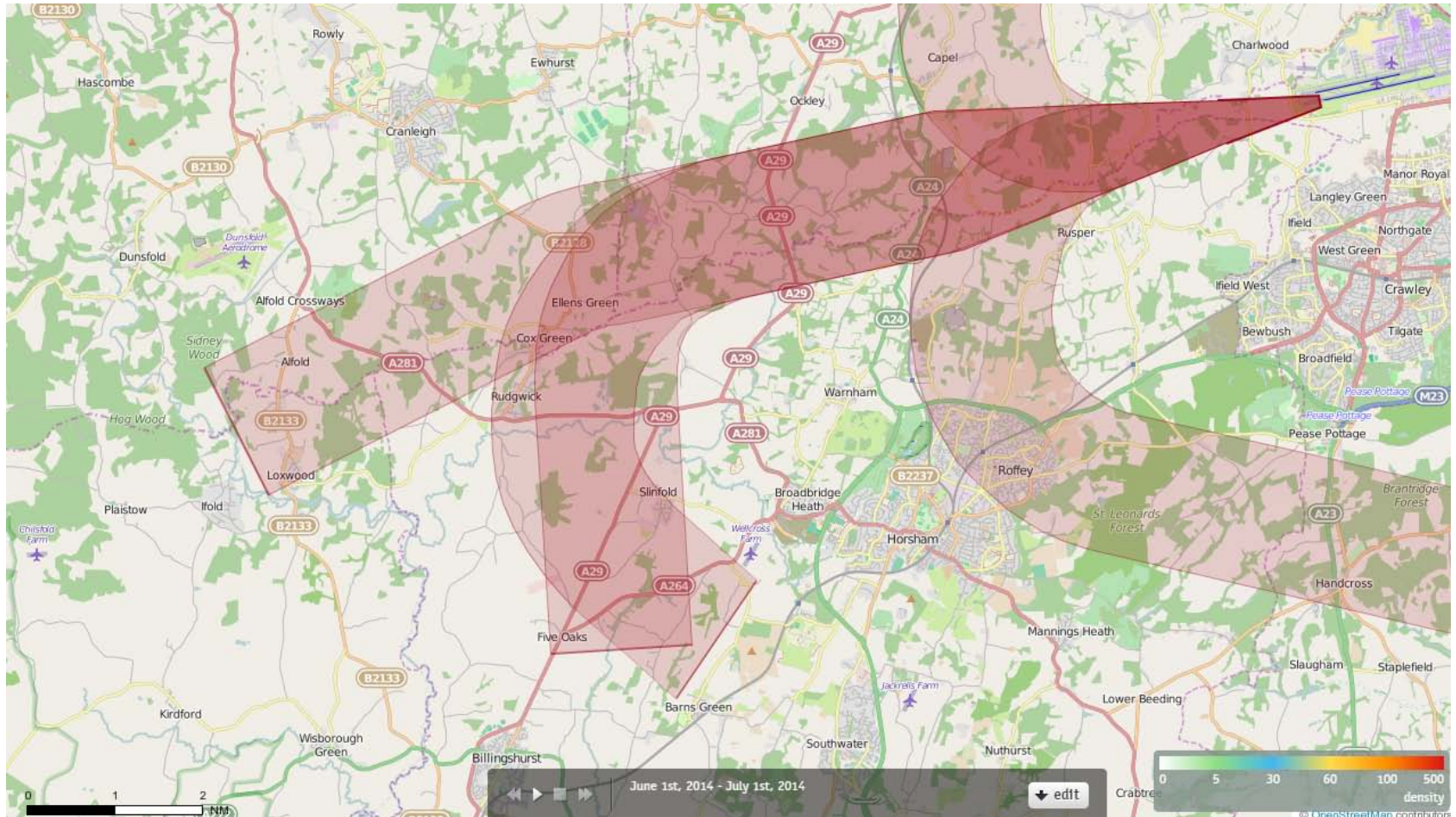


26 WIZAD
Route 9
(Tactical Offload Route)
Pre and Post P-RNAV

26WIZAD Density June 2014
0 Aircraft Used CONVENTIONAL SIDs on 26WIZAD during
this month

26WIZAD Density June 2014

2 Aircraft – Showing P-RNAV Departures Only



Track density

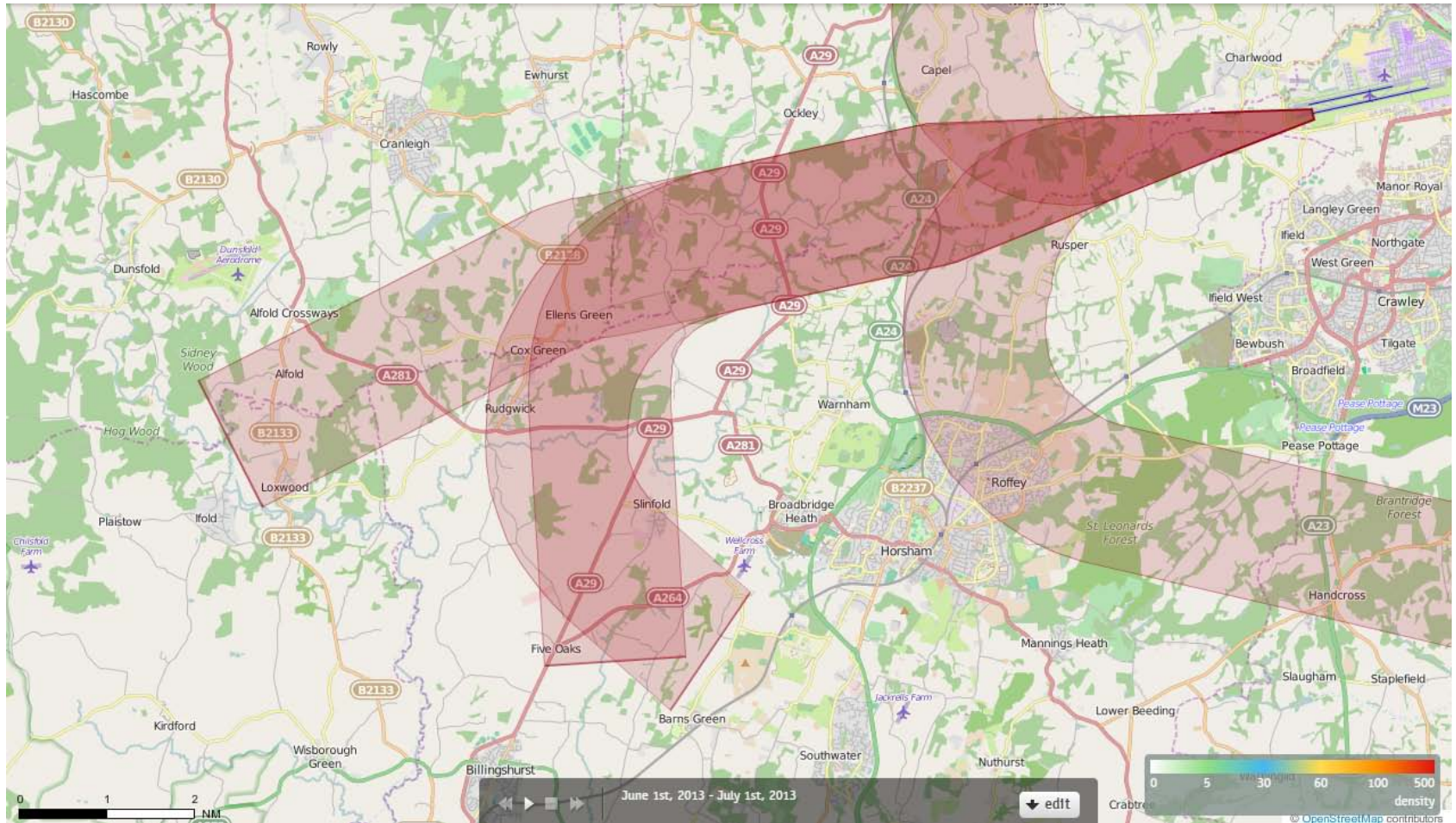
Each track is drawn as a line which has a width of just a few pixels and each pixel on the screen counts how often a 'track line' comes across this pixel when drawing all the tracks.

When all the tracks have been drawn, each pixel decides upon its colour based on the number of times a 'track line' has come across that pixel. The conversion from "count" to "colour" is guided by the numbers and colours given in the current Palette.

Counts in between are mapped to colours in between. If 100 were orange and 200 were red, then 150 would be coloured some orangy red.

26WIZAD Density June 2013

1 Aircraft – Showing CONVENTIONAL Departures Only



Track density

Each track is drawn as a line which has a width of just a few pixels and each pixel on the screen counts how often a 'track line' comes across this pixel when drawing all the tracks.

When all the tracks have been drawn, each pixel decides upon its colour based on the number of times a 'track line' has come across that pixel. The conversion from "count" to "colour" is guided by the numbers and colours given in the current Palette.

Counts in between are mapped to colours in between. If 100 were orange and 200 were red, then 150 would be coloured some orangy red.

26WIZAD Density June 2013

0 Aircraft Used P-RNAV on 26WIZAD during this month

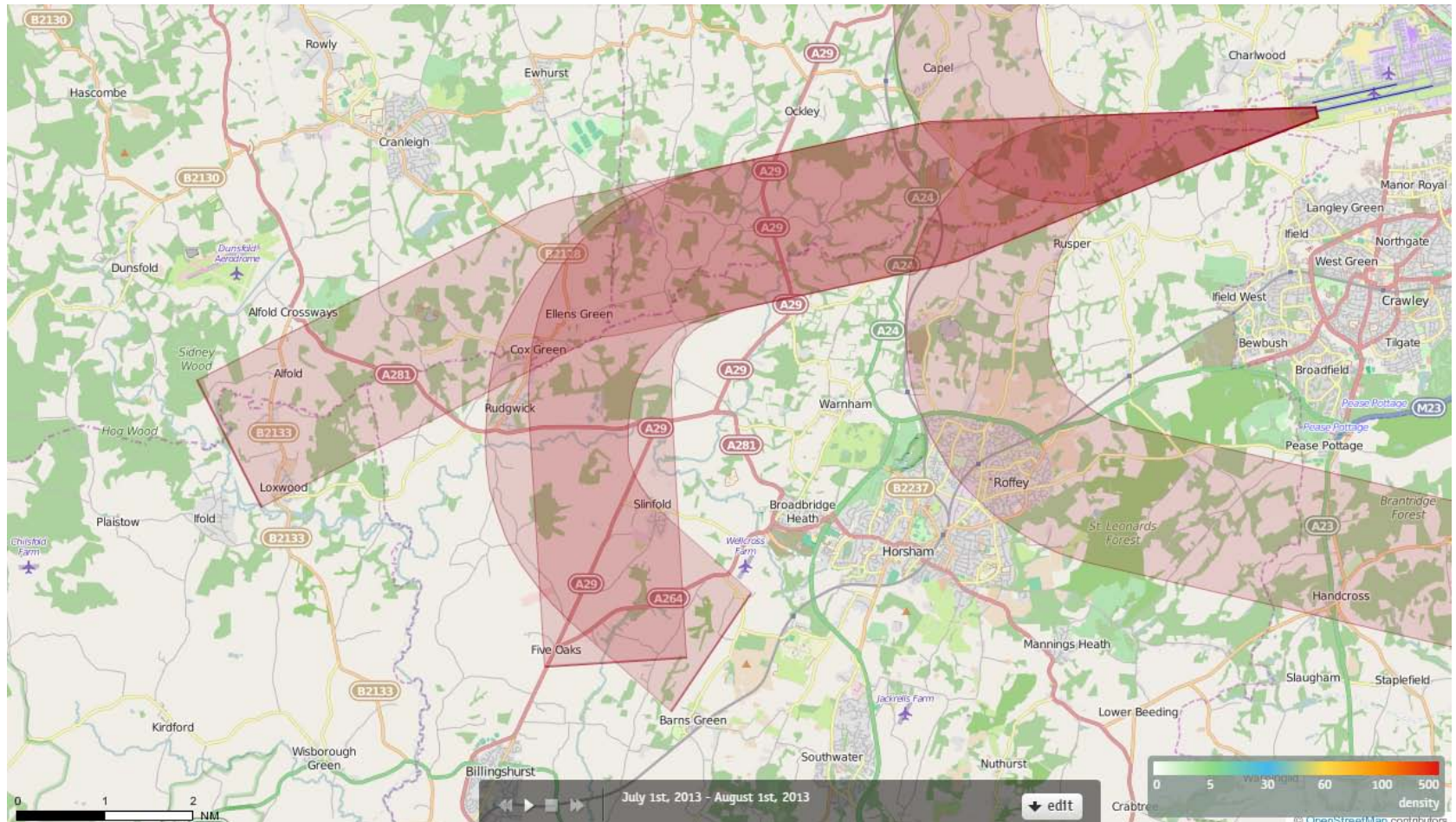
26WIZAD Density July 2014
0 Aircraft Used CONVENTIONAL SIDs on 26WIZAD
during this month

26WIZAD Density July 2014

0 Aircraft Used P-RNAV on 26WIZAD during this month

26WIZAD Density July 2013

3 Aircraft – Showing CONVENTIONAL Departures Only



Track density

Each track is drawn as a line which has a width of just a few pixels and each pixel on the screen counts how often a 'track line' comes across this pixel when drawing all the tracks.

When all the tracks have been drawn, each pixel decides upon its colour based on the number of times a 'track line' has come across that pixel. The conversion from "count" to "colour" is guided by the numbers and colours given in the current Palette.

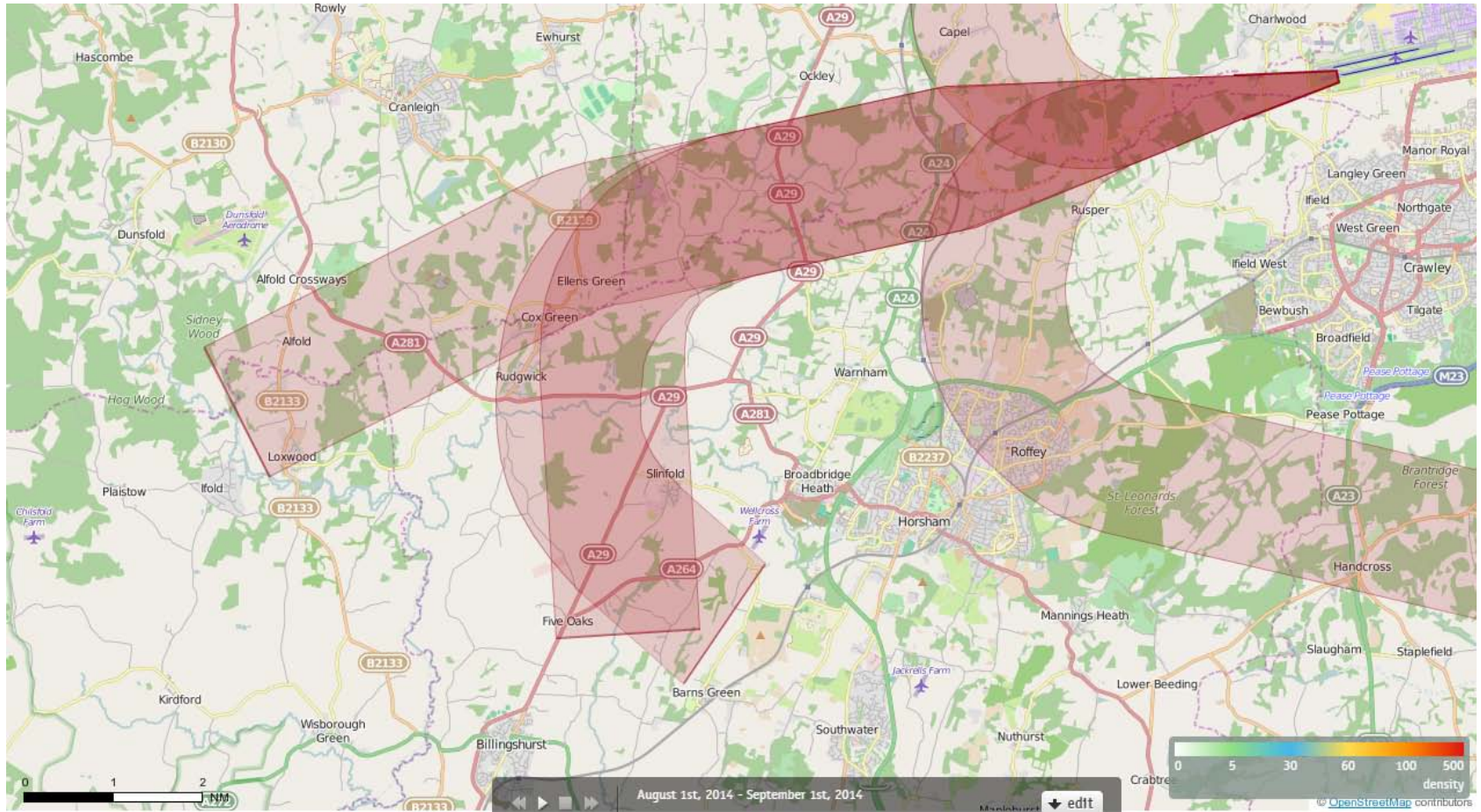
Counts in between are mapped to colours in between. If 100 were orange and 200 were red, then 150 would be coloured some orangy red.

26WIZAD Density July 2013

0 Aircraft Used P-RNAV on 26WIZAD during this month

26WIZAD Density August 2014

1 Aircraft – Showing CONVENTIONAL Departures Only



Track density

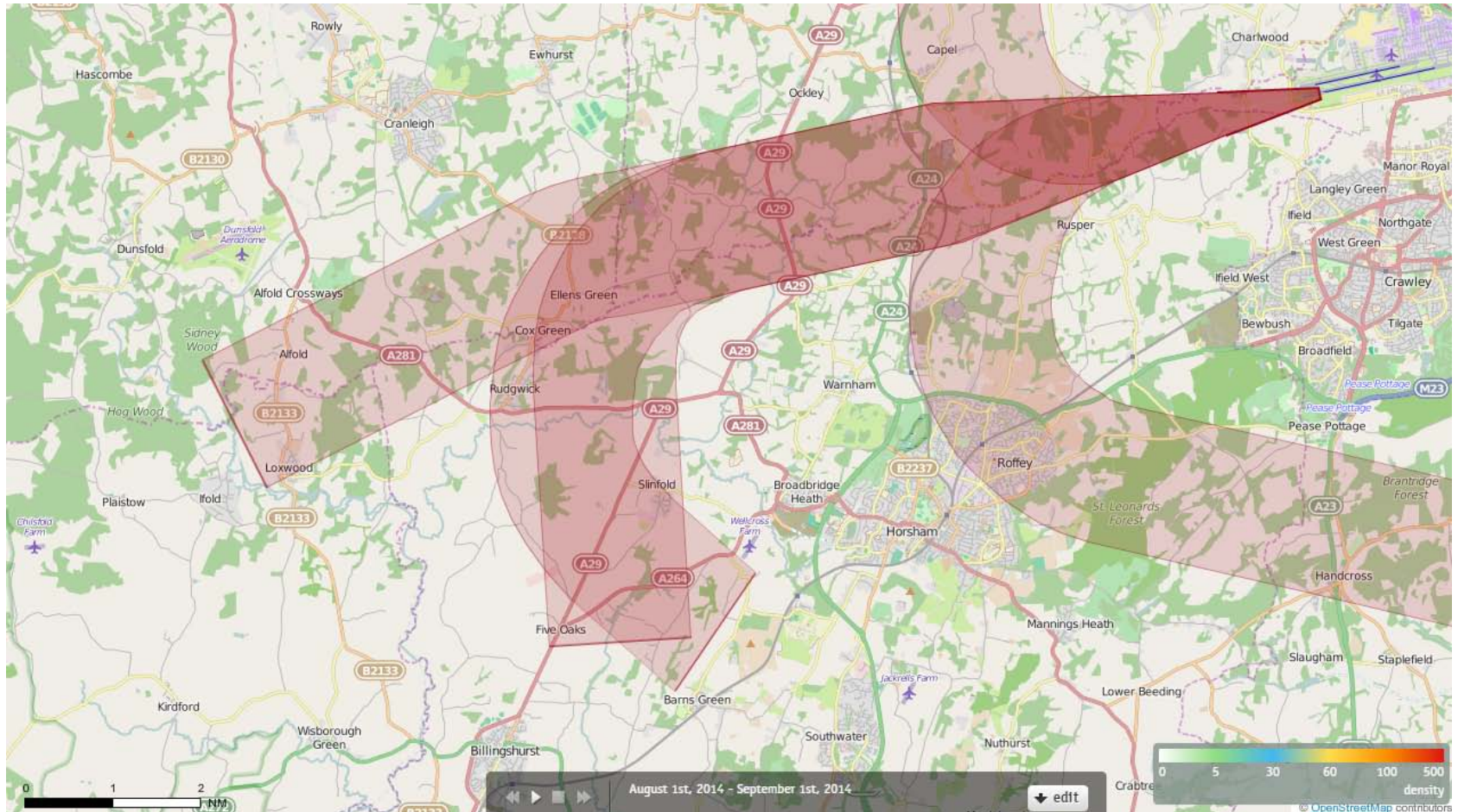
Each track is drawn as a line which has a width of just a few pixels and each pixel on the screen counts how often a 'track line' comes across this pixel when drawing all the tracks.

When all the tracks have been drawn, each pixel decides upon its colour based on the number of times a 'track line' has come across that pixel. The conversion from "count" to "colour" is guided by the numbers and colours given in the current Palette.

Counts in between are mapped to colours in between. If 100 were orange and 200 were red, then 150 would be coloured some orangy red.

26WIZAD Density August 2014

8 Aircraft – Showing P-RNAV Departures Only



Track density

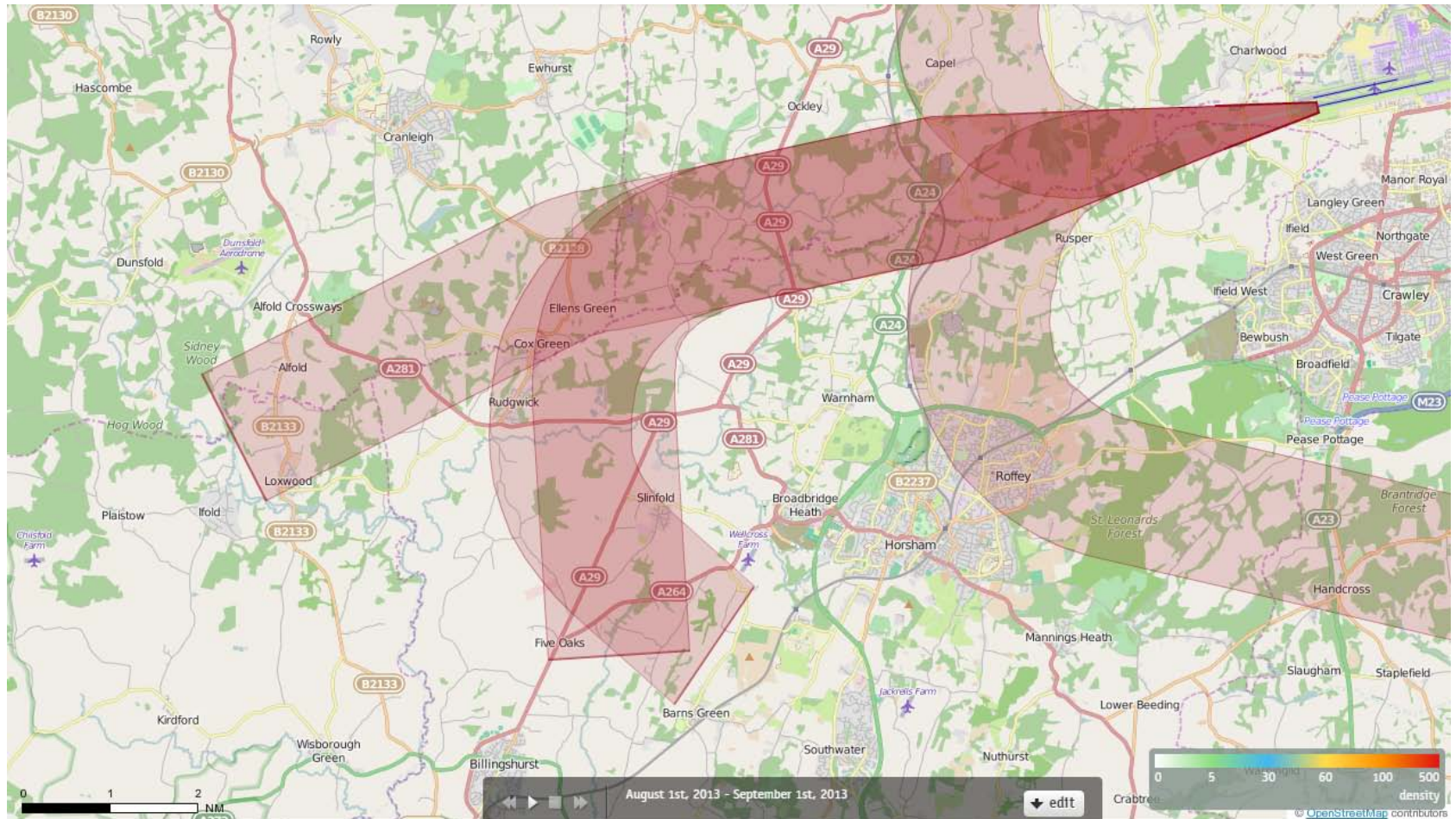
Each track is drawn as a line which has a width of just a few pixels and each pixel on the screen counts how often a 'track line' comes across this pixel when drawing all the tracks.

When all the tracks have been drawn, each pixel decides upon its colour based on the number of times a 'track line' has come across that pixel. The conversion from "count" to "colour" is guided by the numbers and colours given in the current Palette.

Counts in between are mapped to colours in between. If 100 were orange and 200 were red, then 150 would be coloured some orangy red.

26WIZAD Density August 2013

12 Aircraft – Showing CONVENTIONAL Departures Only



Track density

Each track is drawn as a line which has a width of just a few pixels and each pixel on the screen counts how often a 'track line' comes across this pixel when drawing all the tracks.

When all the tracks have been drawn, each pixel decides upon its colour based on the number of times a 'track line' has come across that pixel. The conversion from "count" to "colour" is guided by the numbers and colours given in the current Palette.

Counts in between are mapped to colours in between. If 100 were orange and 200 were red, then 150 would be coloured some orangy red.

26WIZAD Density August 2013

0 Aircraft Used P-RNAV on 26WIZAD during this month