

08CLACTON

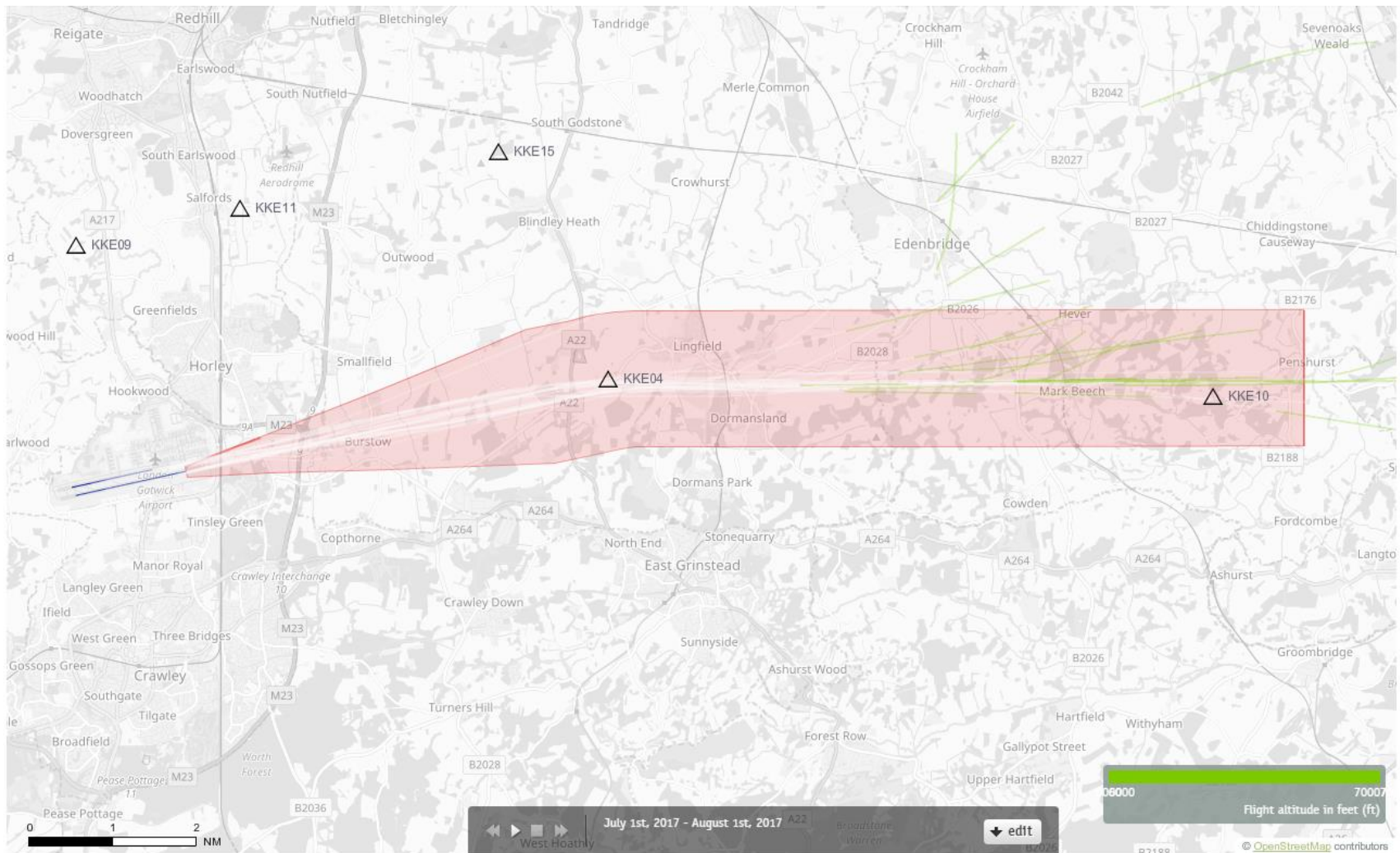
Route 5

Altitude Bands

6000-7000ft

Post RNAV1 - Amendment

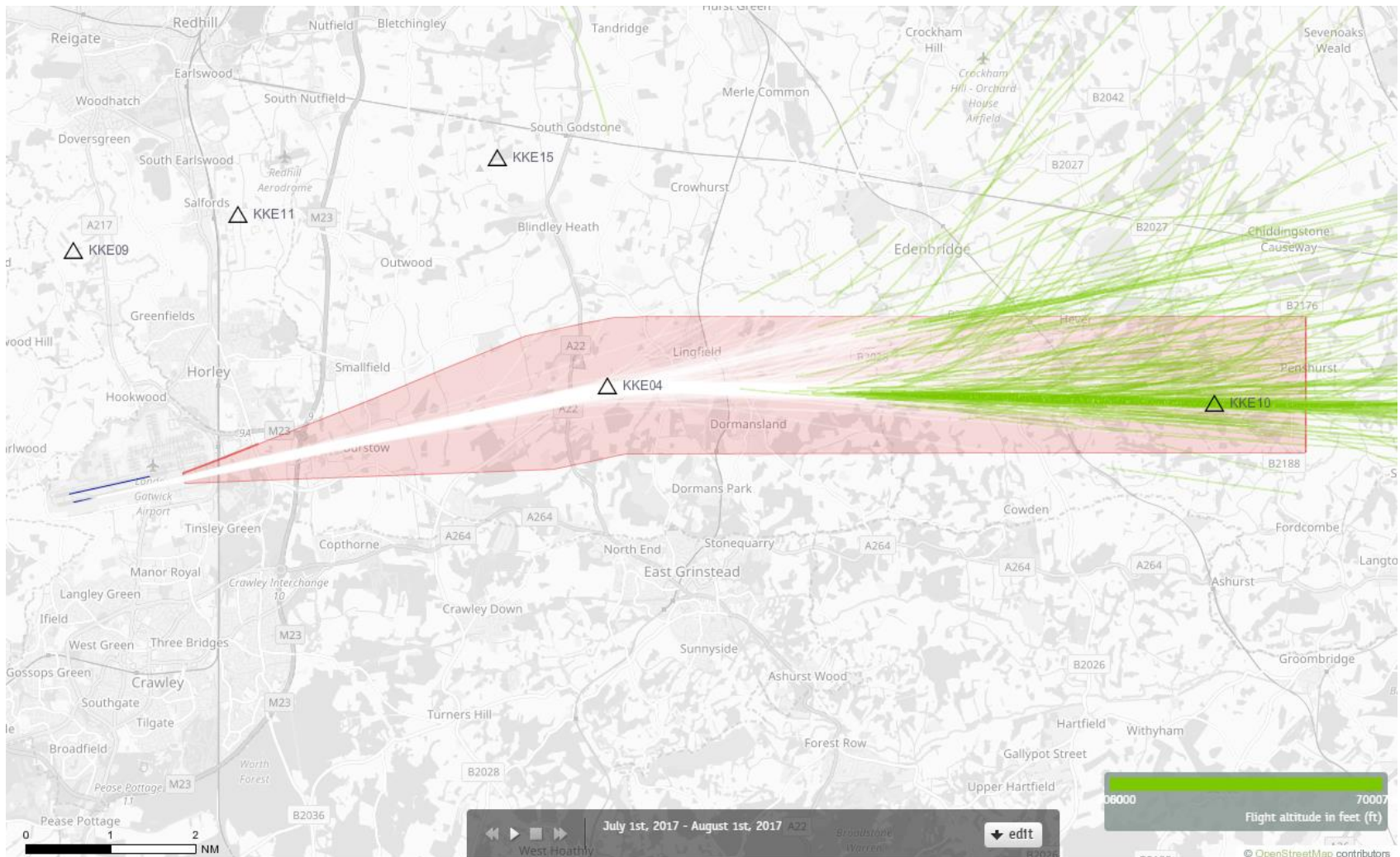
08CLN Departures 1st – 31st July 2017 6000-7000 feet (28 Aircraft – CONVENTIONAL ONLY)



Green plots show the points at which an aircraft was between 6000 and 7000ft altitude.

08CLN Departures 1st – 31st July 2017

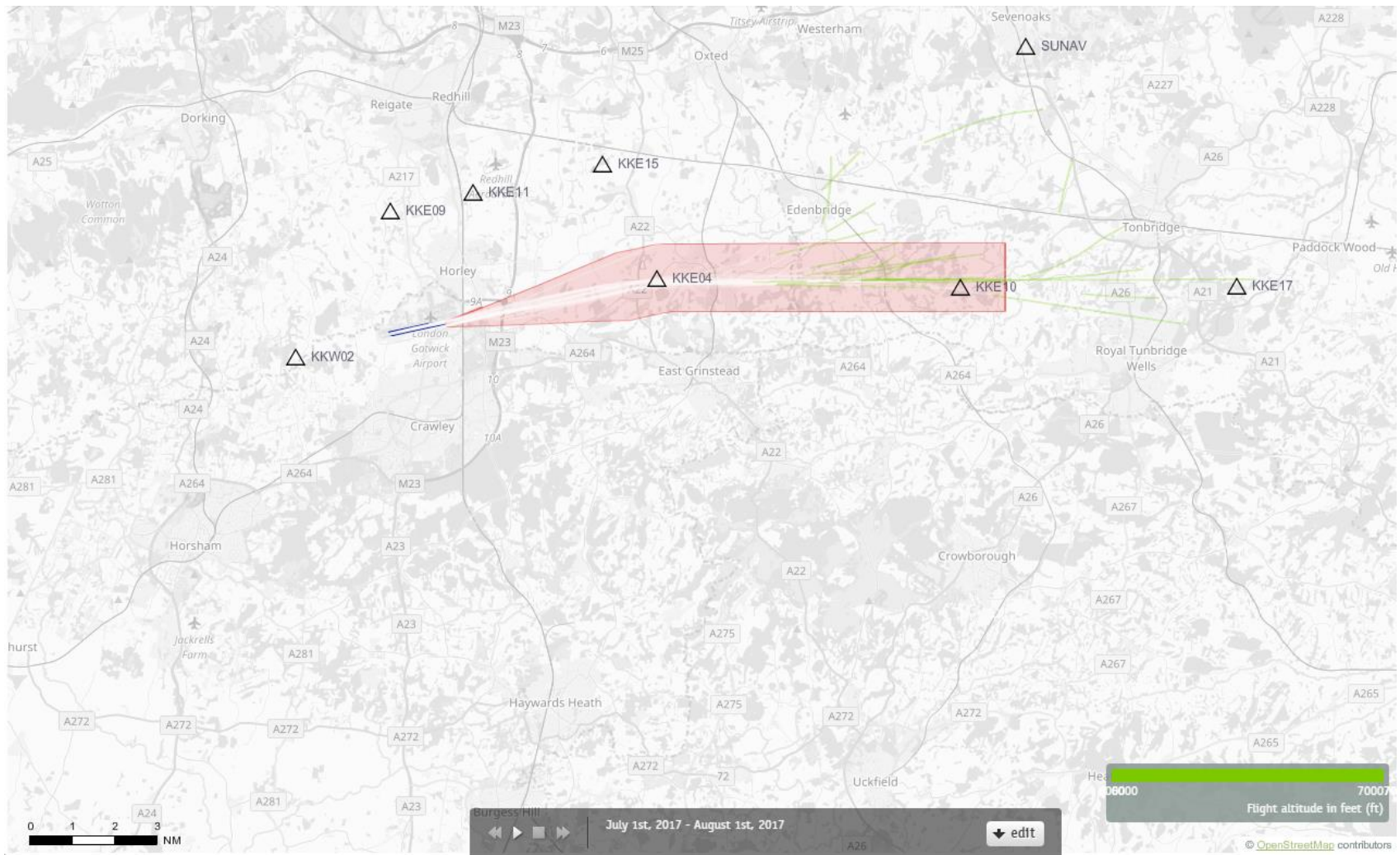
6000-7000 feet (700 Aircraft – RNAV1 ONLY)



Green plots show the points at which an aircraft was between 6000 and 7000ft altitude.

08CLN Departures 1st – 31st July 2017

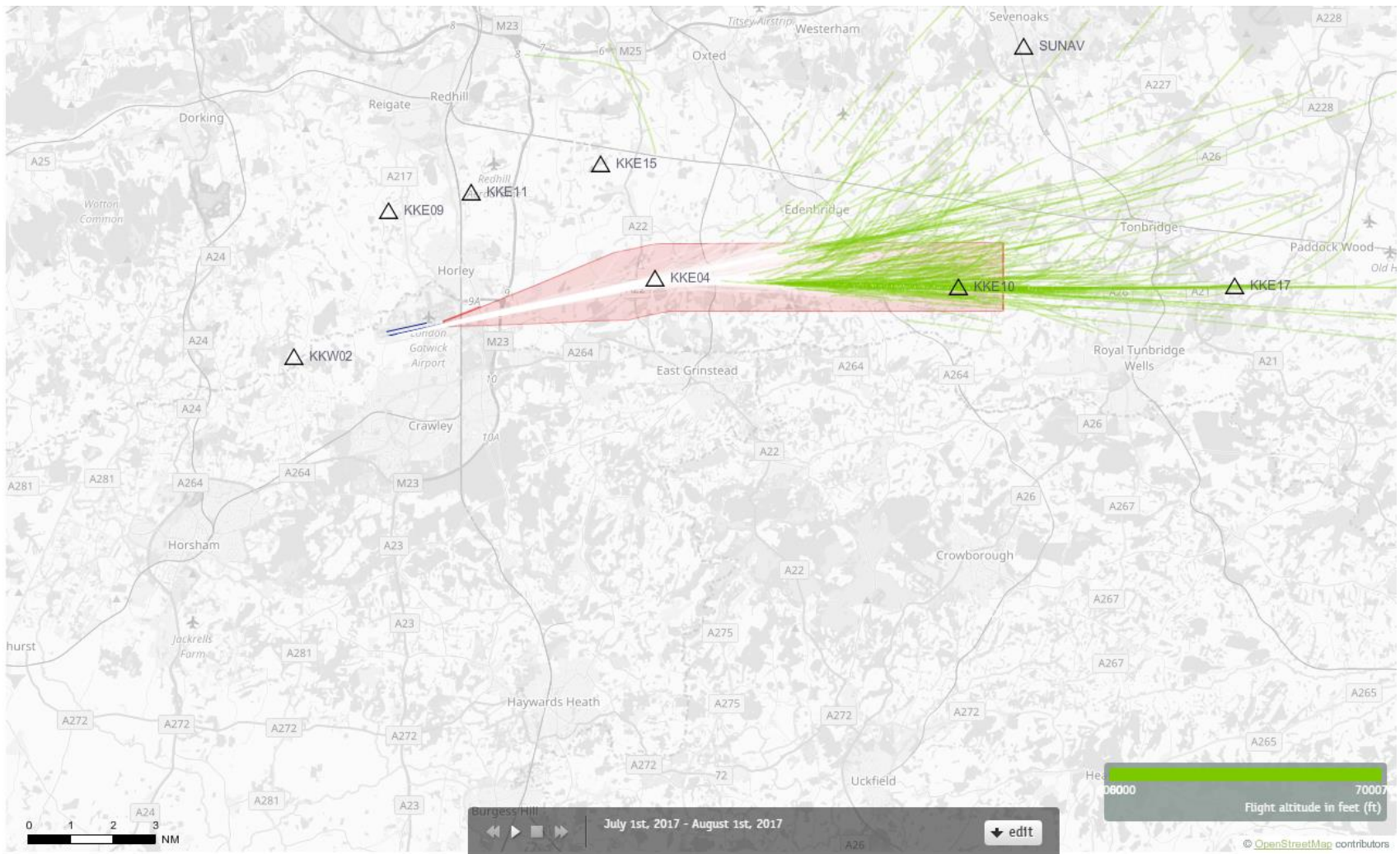
6000-7000 feet (28 Aircraft – CONVENTIONAL ONLY)



Green plots show the points at which an aircraft was between 6000 and 7000ft altitude.

08CLN Departures 1st – 31st July 2017

6000-7000 feet (700 Aircraft – RNAV1 ONLY)



Green plots show the points at which an aircraft was between 6000 and 7000ft altitude.

08CLN Departures 1st – 31st July 2017 6000-7000 feet (28 Aircraft – CONVENTIONAL ONLY)



Green plots show the points at which an aircraft was between 6000 and 7000ft altitude.

08CLN Departures 1st – 31st July 2017 6000-7000 feet (700 Aircraft – RNAV1 ONLY)



Green plots show the points at which an aircraft was between 6000 and 7000ft altitude.

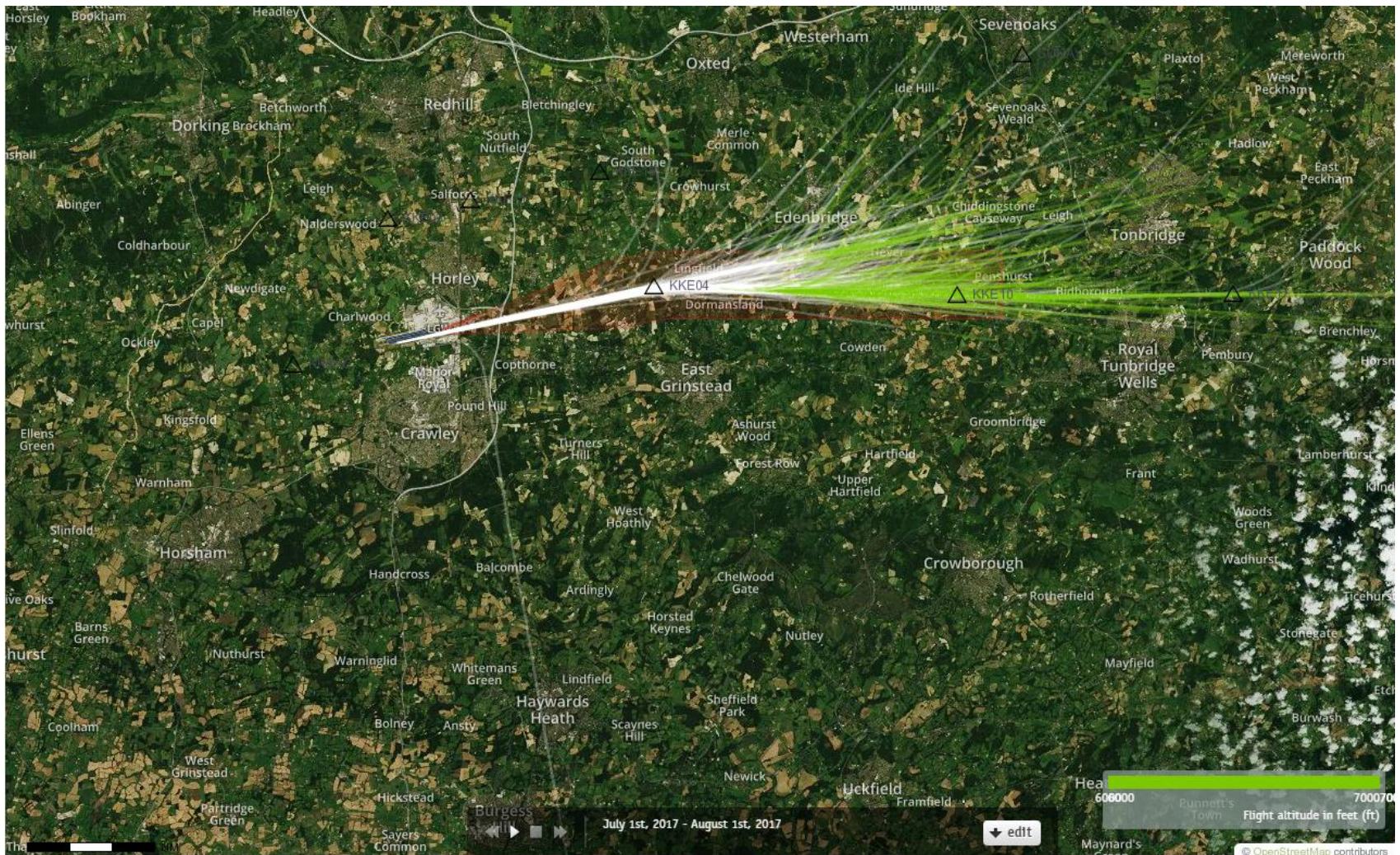
08CLN Departures 1st – 31st July 2017 6000-7000 feet (28 Aircraft – CONVENTIONAL ONLY)



Green plots show the points at which an aircraft was between 6000 and 7000ft altitude.

08CLN Departures 1st – 31st July 2017

6000-7000 feet (700 Aircraft – RNAV1 ONLY)



Green plots show the points at which an aircraft was between 6000 and 7000ft altitude.