

26 SEAFORD

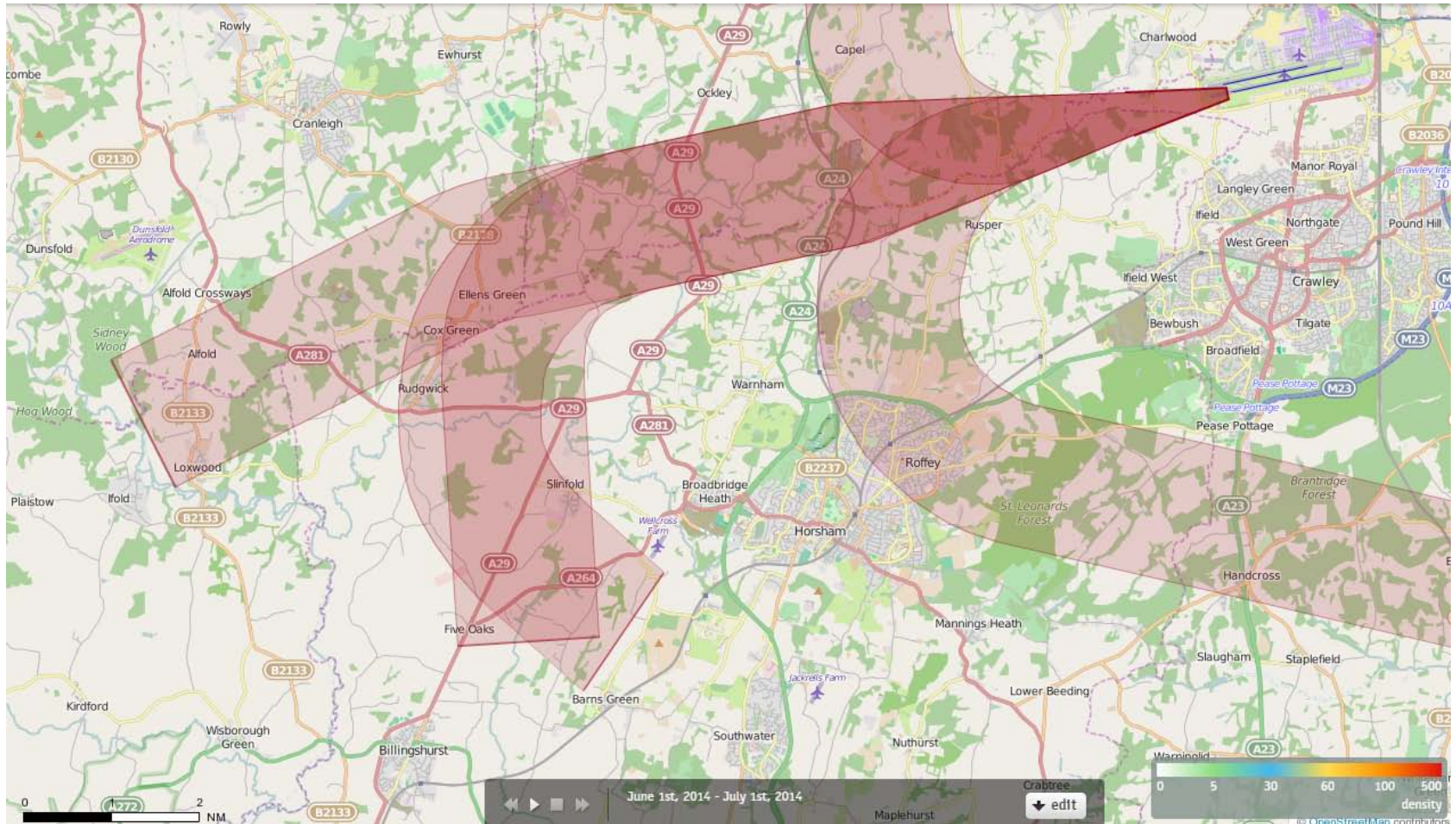
Route 8

Pre and Post P-RNAV

During June, July and August 2014, 26SEAFORD was utilised much less due to ADNID1X departure trial route. Therefore these maps show September, October & November 2014 as well as summer months.

26SEAFORD Density June 2014

2 Aircraft – Showing CONVENTIONAL Departures Only



Track density

Each track is drawn as a line which has a width of just a few pixels and each pixel on the screen counts how often a 'track line' comes across this pixel when drawing all the tracks.

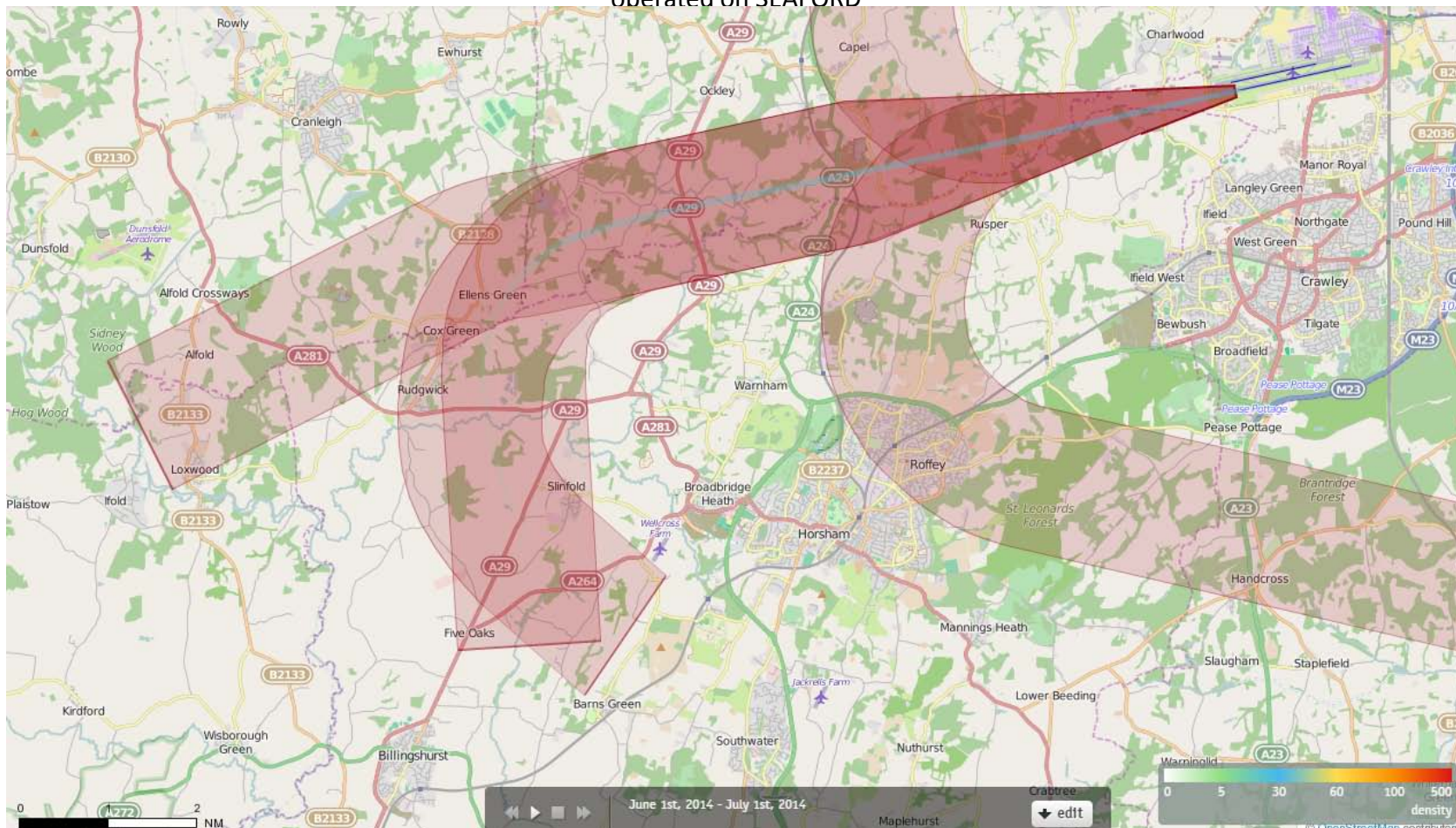
When all the tracks have been drawn, each pixel decides upon its colour based on the number of times a 'track line' has come across that pixel. The conversion from "count" to "colour" is guided by the numbers and colours given in the current Palette.

Counts in between are mapped to colours in between. If 100 were orange and 200 were red, then 150 would be coloured some orangy red.

26SEAFORD Density June 2014

33 Aircraft – Showing P-RNAV Departures Only

N.B. During this period the ADNID trial was in operation, therefore only 33 aircraft operated on SEAFORD



Track density

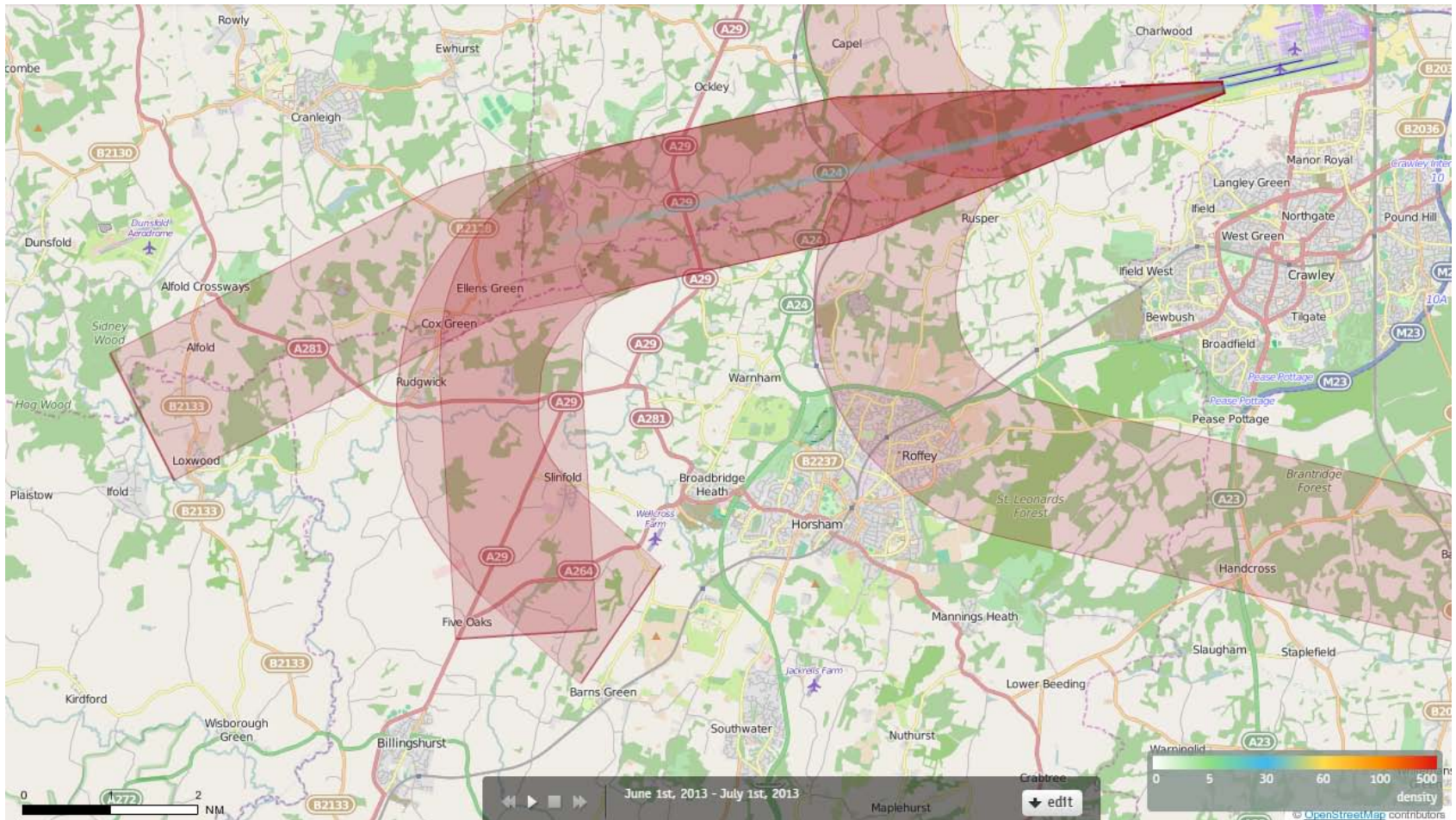
Each track is drawn as a line which has a width of just a few pixels and each pixel on the screen counts how often a 'track line' comes across this pixel when drawing all the tracks.

When all the tracks have been drawn, each pixel decides upon its colour based on the number of times a 'track line' has come across that pixel. The conversion from "count" to "colour" is guided by the numbers and colours given in the current Palette.

Counts in between are mapped to colours in between. If 100 were orange and 200 were red, then 150 would be coloured some orangy red.

26SEAFORD Density June 2013

40 Aircraft – Showing CONVENTIONAL Departures Only



Track density

Each track is drawn as a line which has a width of just a few pixels and each pixel on the screen counts how often a 'track line' comes across this pixel when drawing all the tracks.

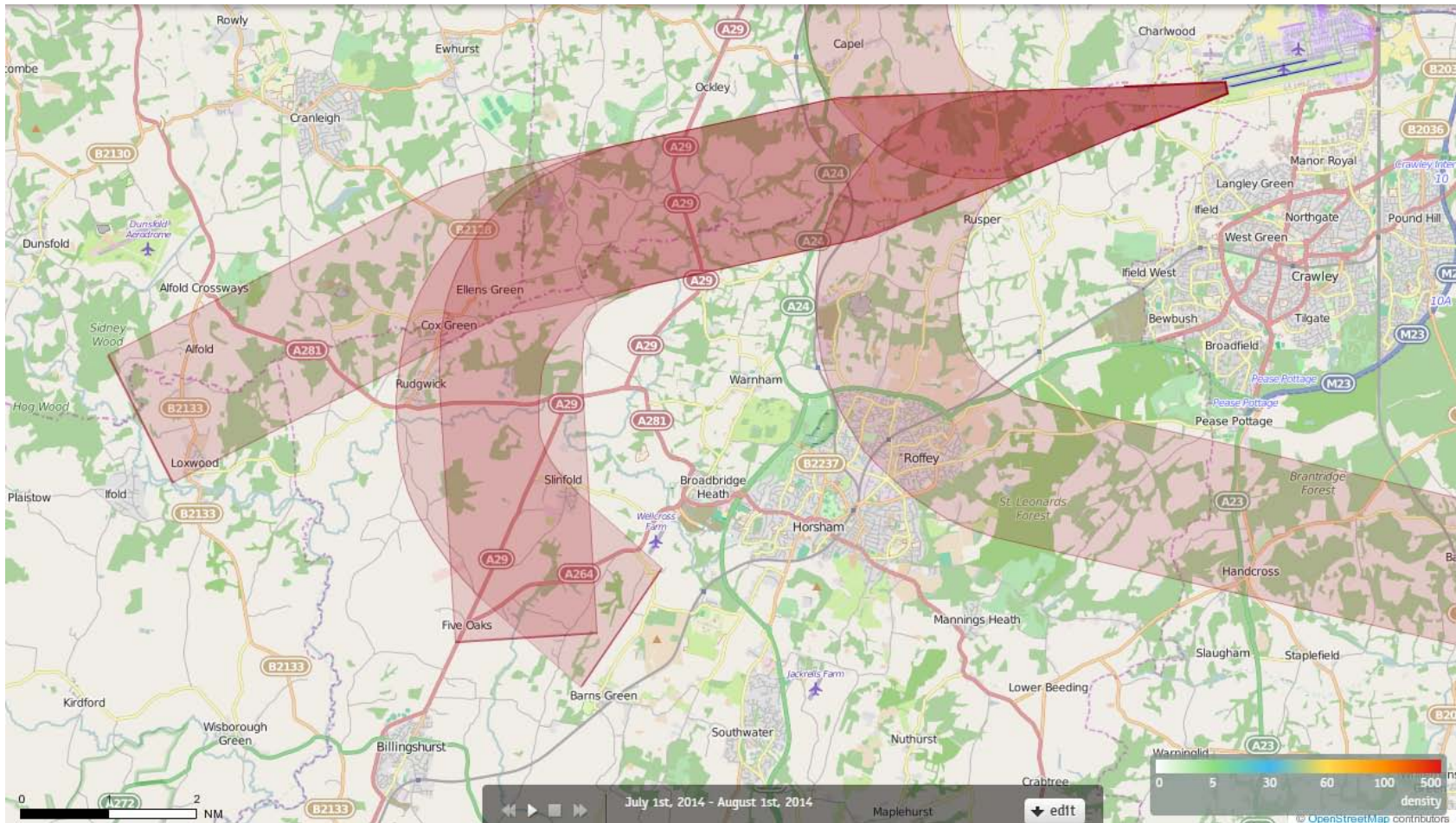
When all the tracks have been drawn, each pixel decides upon its colour based on the number of times a 'track line' has come across that pixel. The conversion from "count" to "colour" is guided by the numbers and colours given in the current Palette.

Counts in between are mapped to colours in between. If 100 were orange and 200 were red, then 150 would be coloured some orangy red.

26SEAFORD Density June 2013
0 Aircraft Used P-RNAV during this month

26SEAFORD Density July 2014

4 Aircraft – Showing CONVENTIONAL Departures Only



Track density

Each track is drawn as a line which has a width of just a few pixels and each pixel on the screen counts how often a 'track line' comes across this pixel when drawing all the tracks.

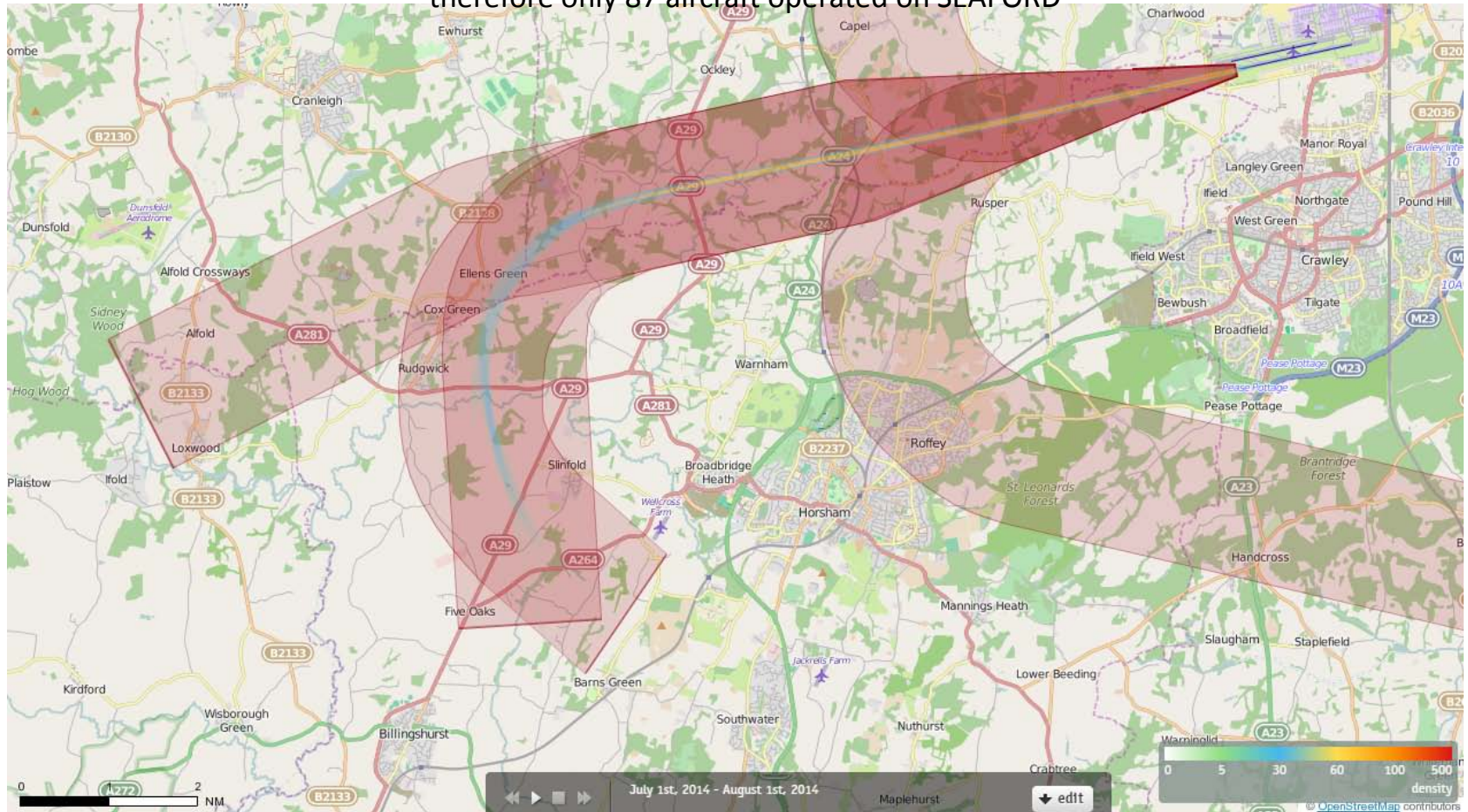
When all the tracks have been drawn, each pixel decides upon its colour based on the number of times a 'track line' has come across that pixel. The conversion from "count" to "colour" is guided by the numbers and colours given in the current Palette.

Counts in between are mapped to colours in between. If 100 were orange and 200 were red, then 150 would be coloured some orangy red.

26SEAFORD Density July 2014

87 Aircraft – Showing P-RNAV Departures Only

N.B. During this period the ADNID trial was in operation, therefore only 87 aircraft operated on SEAFORD



Track density

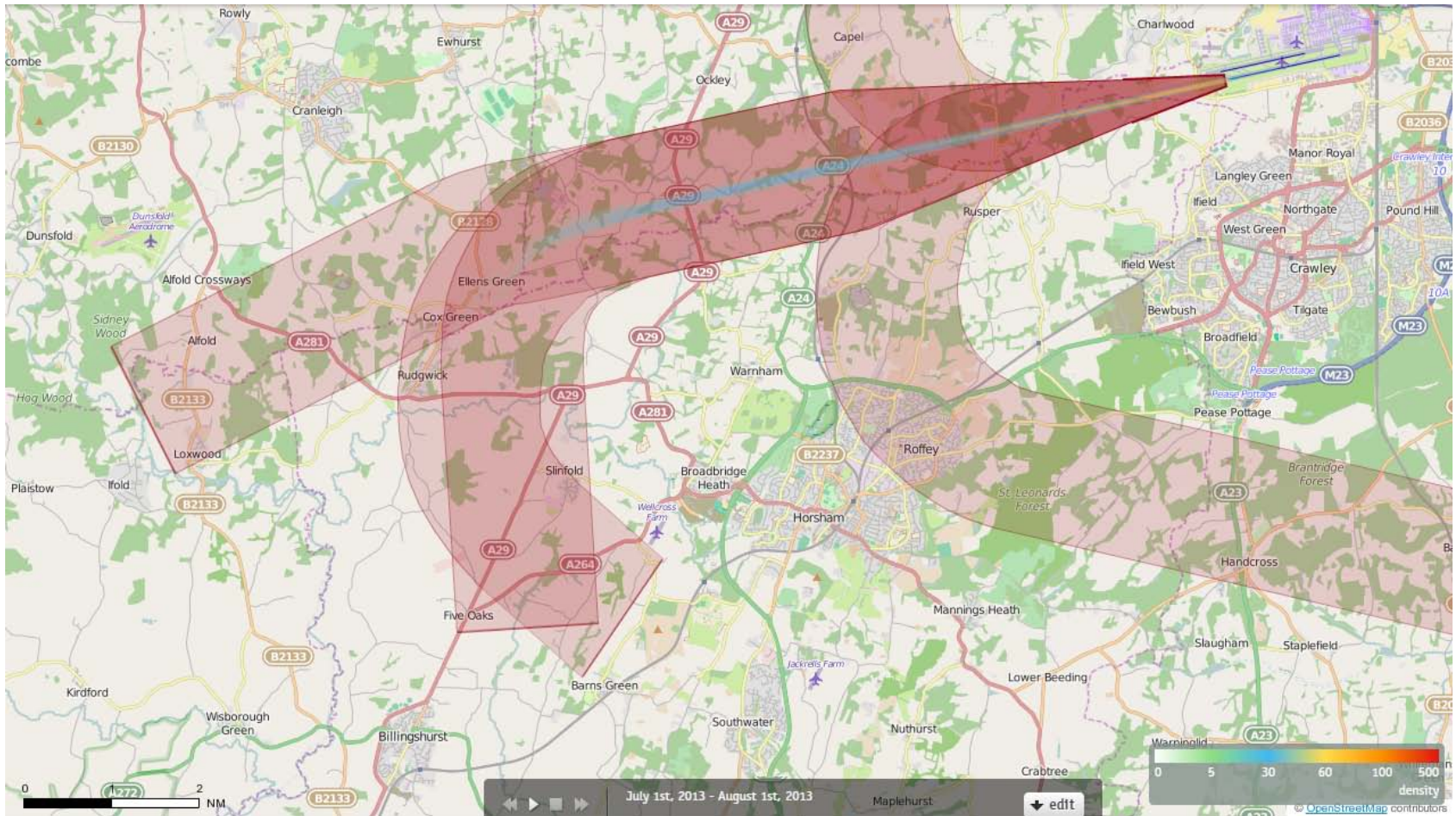
Each track is drawn as a line which has a width of just a few pixels and each pixel on the screen counts how often a 'track line' comes across this pixel when drawing all the tracks.

When all the tracks have been drawn, each pixel decides upon its colour based on the number of times a 'track line' has come across that pixel. The conversion from "count" to "colour" is guided by the numbers and colours given in the current Palette.

Counts in between are mapped to colours in between. If 100 were orange and 200 were red, then 150 would be coloured some orangy red.

26SEAFORD Density July 2013

75 Aircraft – Showing CONVENTIONAL Departures Only



Track density

Each track is drawn as a line which has a width of just a few pixels and each pixel on the screen counts how often a 'track line' comes across this pixel when drawing all the tracks.

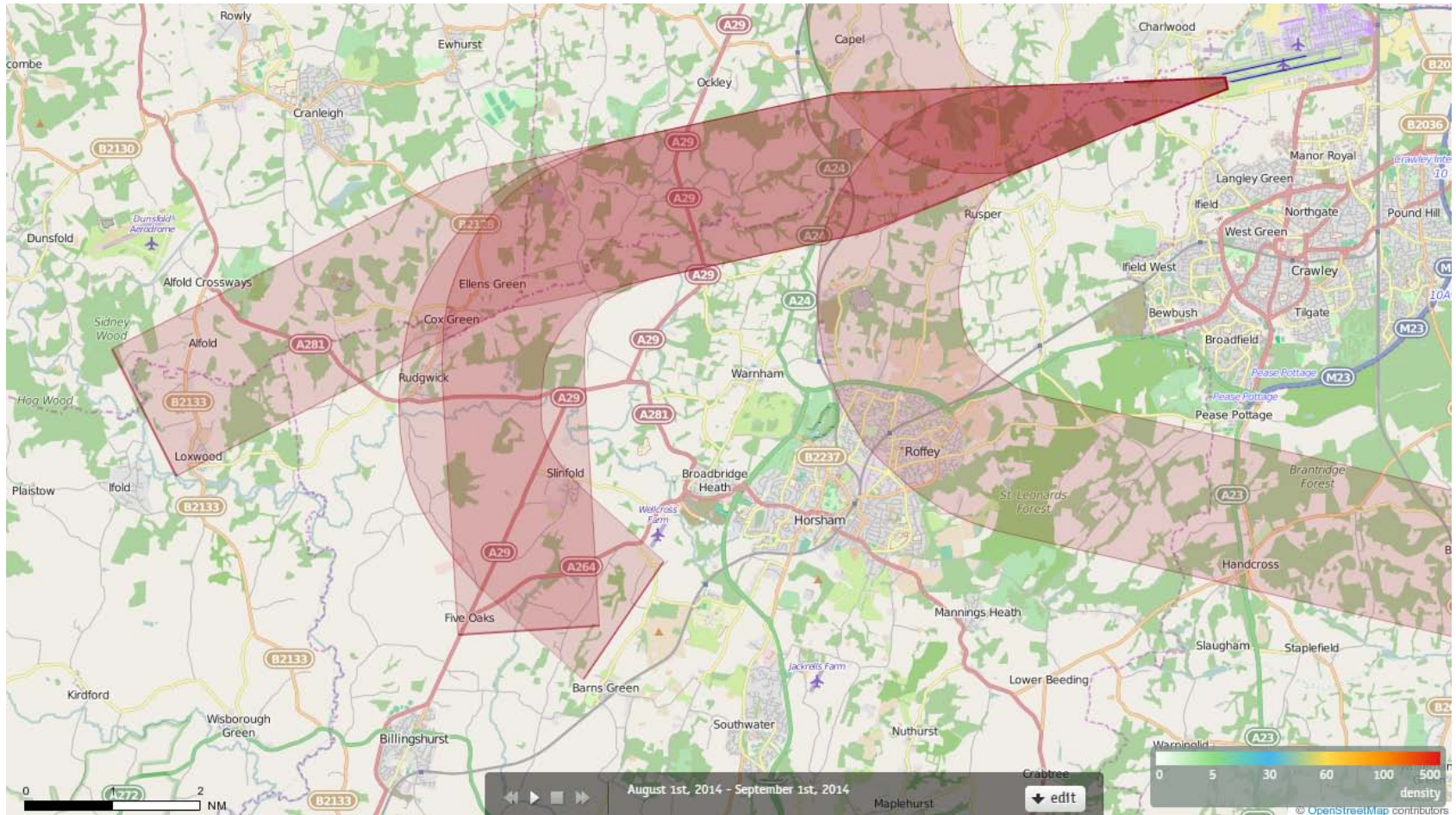
When all the tracks have been drawn, each pixel decides upon its colour based on the number of times a 'track line' has come across that pixel. The conversion from "count" to "colour" is guided by the numbers and colours given in the current Palette.

Counts in between are mapped to colours in between. If 100 were orange and 200 were red, then 150 would be coloured some orangy red.

26SEAFORD Density July 2013
0 Aircraft Used P-RNAV during this month

26SEAFORD Density August 2014

7 Aircraft – Showing CONVENTIONAL Departures Only



Track density

Each track is drawn as a line which has a width of just a few pixels and each pixel on the screen counts how often a 'track line' comes across this pixel when drawing all the tracks.

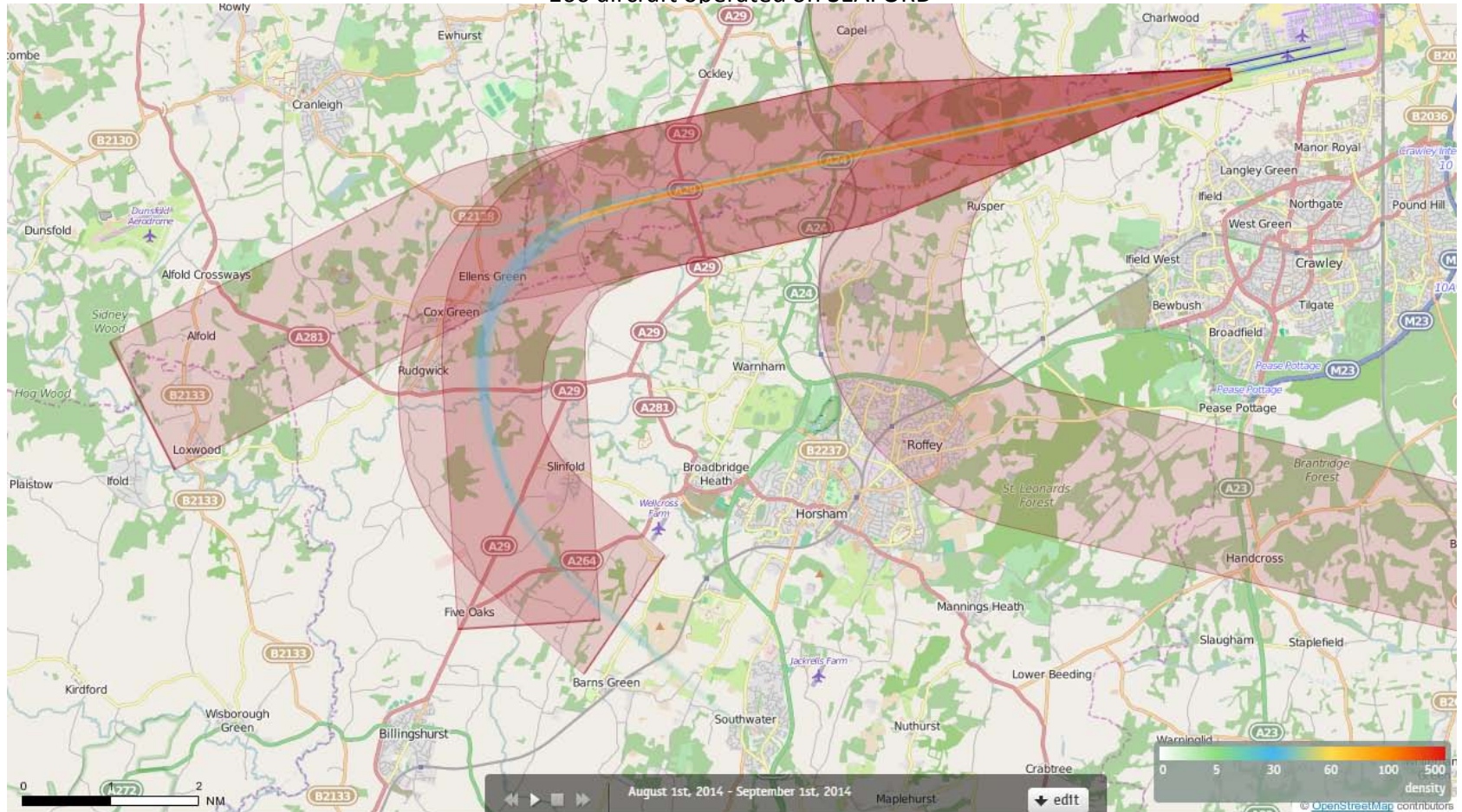
When all the tracks have been drawn, each pixel decides upon its colour based on the number of times a 'track line' has come across that pixel. The conversion from "count" to "colour" is guided by the numbers and colours given in the current Palette.

Counts in between are mapped to colours in between. If 100 were orange and 200 were red, then 150 would be coloured some orangy red.

26SEAFORD Density August 2014

160 Aircraft – Showing P-RNAV Departures Only

N.B. During this period the ADNID trial was in operation, therefore only 160 aircraft operated on SEAFORD



Track density

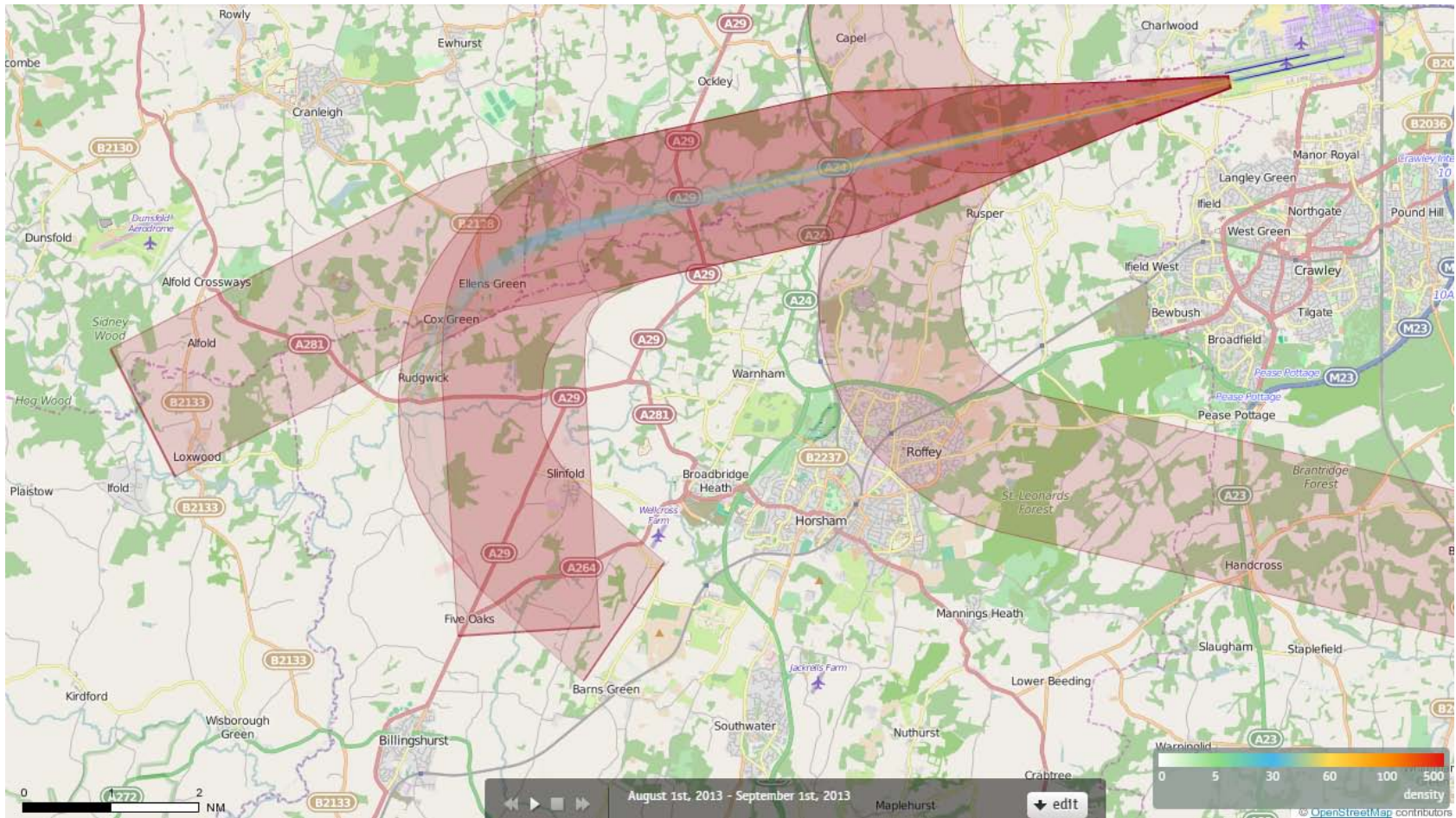
Each track is drawn as a line which has a width of just a few pixels and each pixel on the screen counts how often a 'track line' comes across this pixel when drawing all the tracks.

When all the tracks have been drawn, each pixel decides upon its colour based on the number of times a 'track line' has come across that pixel. The conversion from "count" to "colour" is guided by the numbers and colours given in the current Palette.

Counts in between are mapped to colours in between. If 100 were orange and 200 were red, then 150 would be coloured some orangy red.

26SEAFORD Density August 2013

110 Aircraft – Showing CONVENTIONAL Departures Only



Track density

Each track is drawn as a line which has a width of just a few pixels and each pixel on the screen counts how often a 'track line' comes across this pixel when drawing all the tracks.

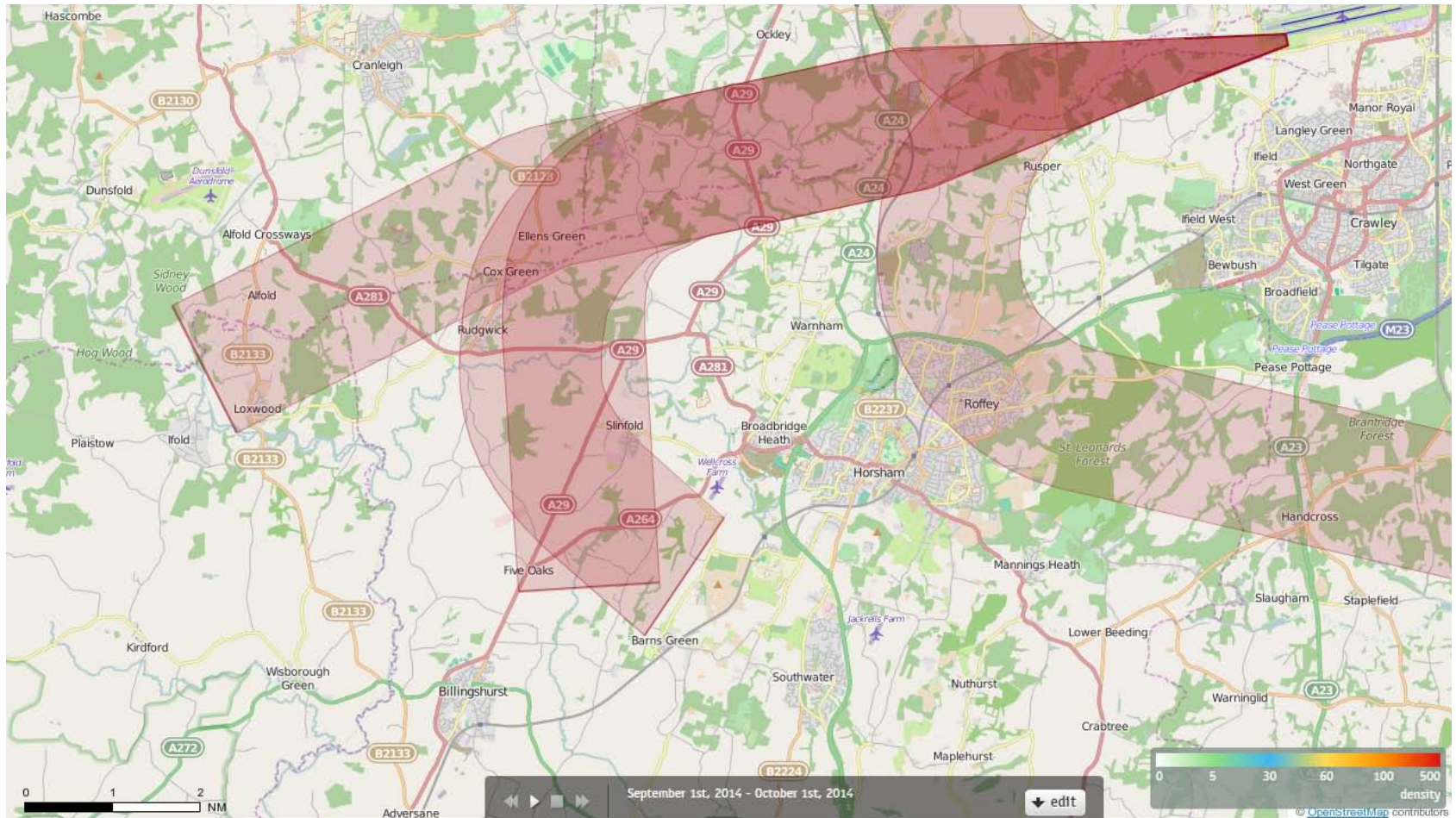
When all the tracks have been drawn, each pixel decides upon its colour based on the number of times a 'track line' has come across that pixel. The conversion from "count" to "colour" is guided by the numbers and colours given in the current Palette.

Counts in between are mapped to colours in between. If 100 were orange and 200 were red, then 150 would be coloured some orangy red.

26SEAFORD Density August 2013
0 Aircraft Used P-RNAV during this month

26SEAFORD Density September 2014

2 Aircraft – Showing CONVENTIONAL Departures Only



Track density

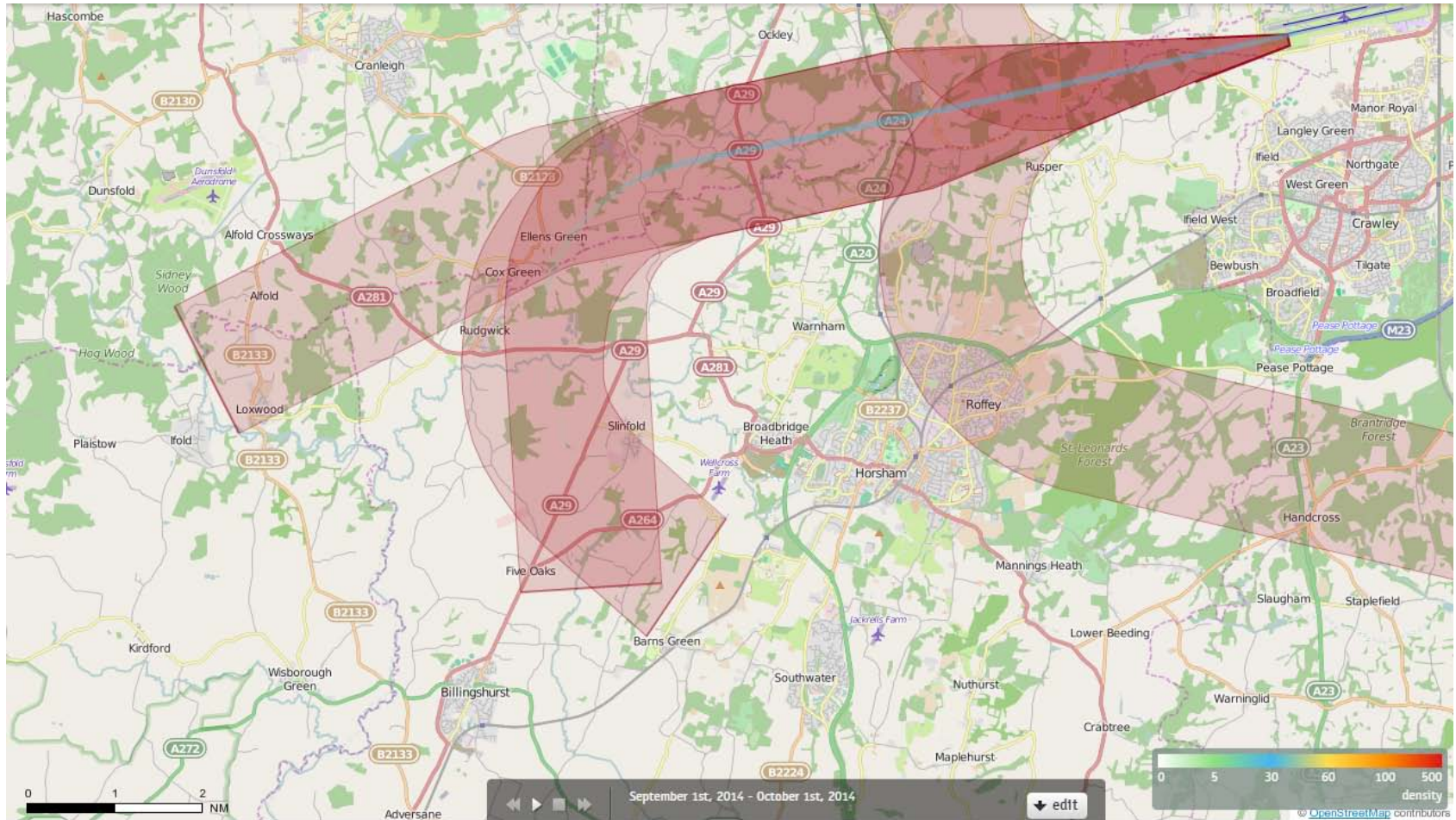
Each track is drawn as a line which has a width of just a few pixels and each pixel on the screen counts how often a 'track line' comes across this pixel when drawing all the tracks.

When all the tracks have been drawn, each pixel decides upon its colour based on the number of times a 'track line' has come across that pixel. The conversion from "count" to "colour" is guided by the numbers and colours given in the current Palette.

Counts in between are mapped to colours in between. If 100 were orange and 200 were red, then 150 would be coloured some orangy red.

26SEAFORD Density September 2014

38 Aircraft – Showing P-RNAV Departures Only



Track density

Each track is drawn as a line which has a width of just a few pixels and each pixel on the screen counts how often a 'track line' comes across this pixel when drawing all the tracks.

When all the tracks have been drawn, each pixel decides upon its colour based on the number of times a 'track line' has come across that pixel. The conversion from "count" to "colour" is guided by the numbers and colours given in the current Palette.

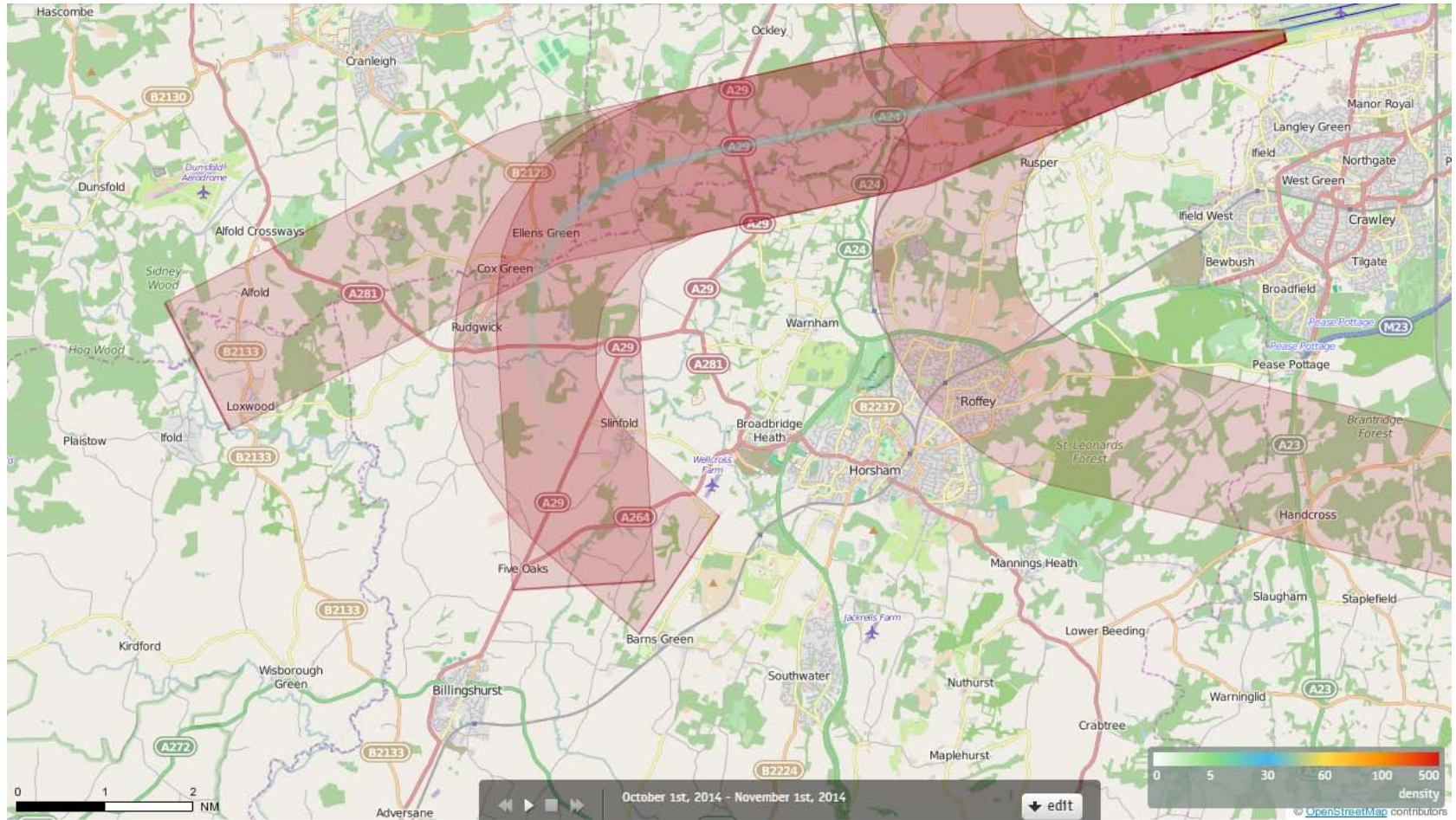
Counts in between are mapped to colours in between. If 100 were orange and 200 where red, then 150 would be coloured some orangy red.

26SEAFORD Density October 2014

0 Aircraft Used CONVENTIONAL SIDs on 26SEAFORD during this month

26SEAFORD Density October 2014

59 Aircraft – Showing P-RNAV Departures Only



Track density

Each track is drawn as a line which has a width of just a few pixels and each pixel on the screen counts how often a 'track line' comes across this pixel when drawing all the tracks.

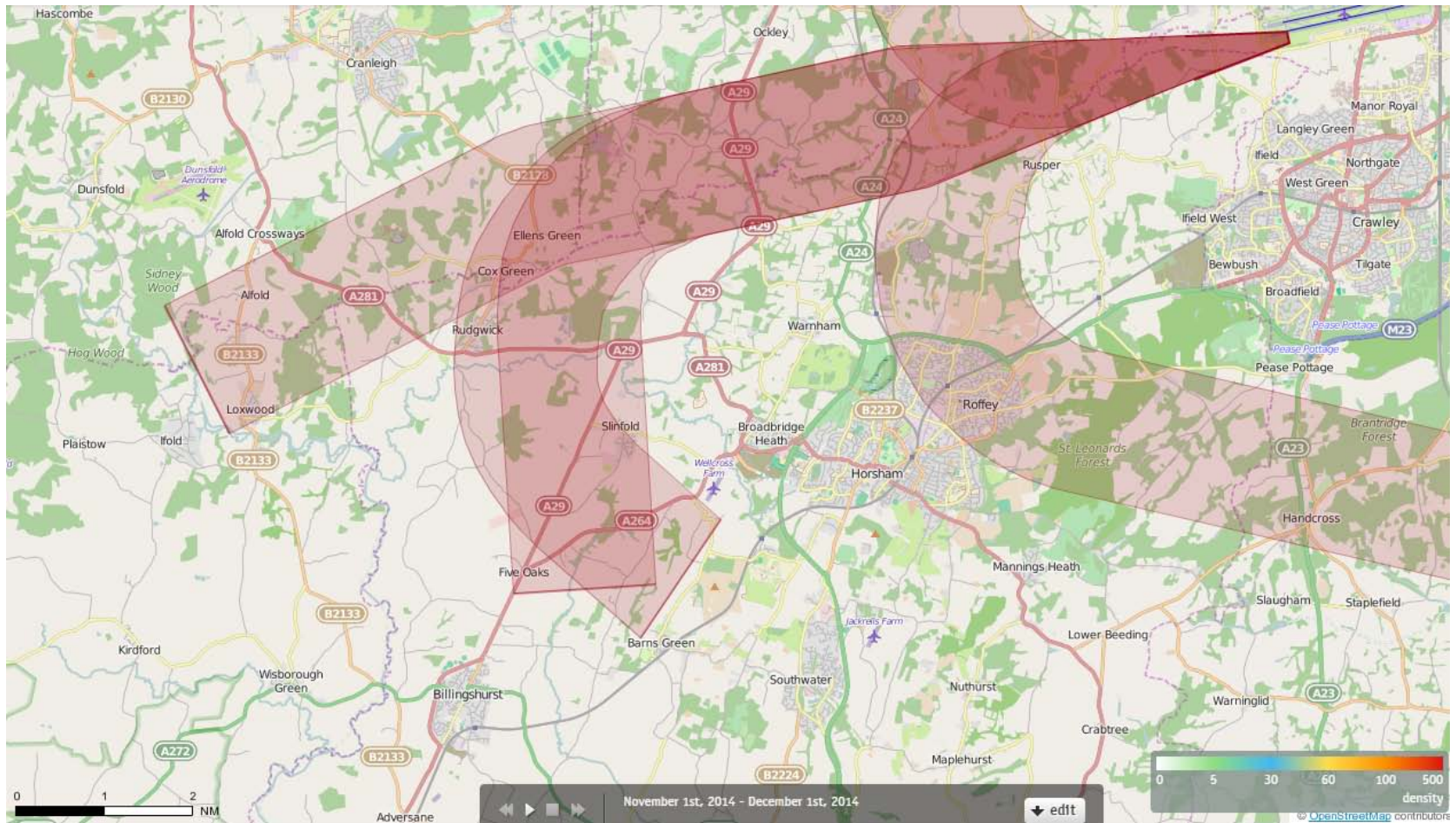
When all the tracks have been drawn, each pixel decides upon its colour based on the number of times a 'track line' has come across that pixel. The conversion from "count" to "colour" is guided by the numbers and colours given in the current Palette.

Counts in between are mapped to colours in between. If 100 were orange and 200 were red, then 150 would be coloured some orangy red.

26SEAFORD Density November 2014
0 Aircraft Used CONVENTIONAL SIDs on 26SEAFORD during
this month

26SEAFORD Density November 2014

1 Aircraft – Showing P-RNAV Departures Only



Track density

Each track is drawn as a line which has a width of just a few pixels and each pixel on the screen counts how often a 'track line' comes across this pixel when drawing all the tracks.

When all the tracks have been drawn, each pixel decides upon its colour based on the number of times a 'track line' has come across that pixel. The conversion from "count" to "colour" is guided by the numbers and colours given in the current Palette.

Counts in between are mapped to colours in between. If 100 were orange and 200 were red, then 150 would be coloured some orangy red.