

All SIDs Within 08 KENET Route 3

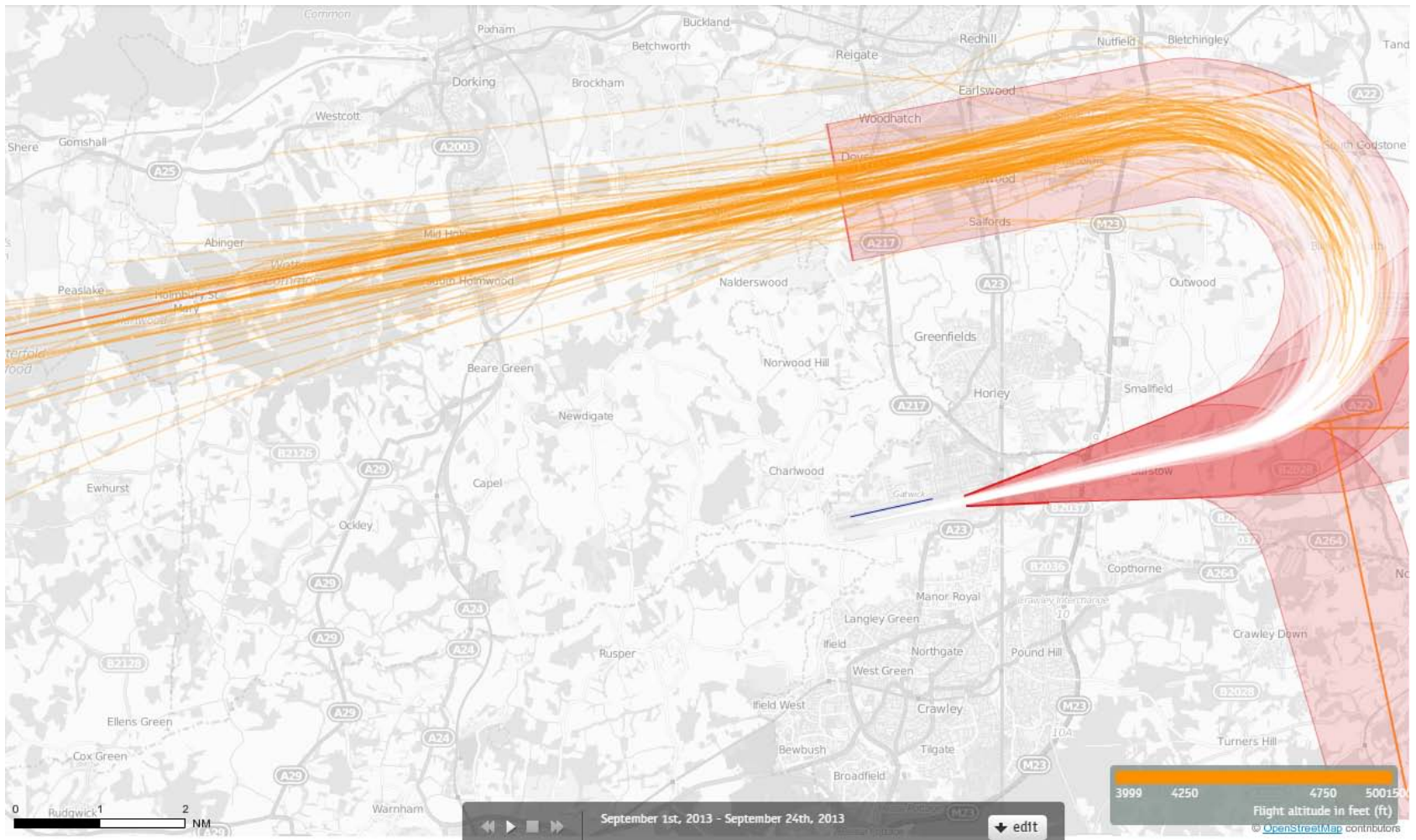
Altitude Bands

4000-5000ft

5000-6000ft

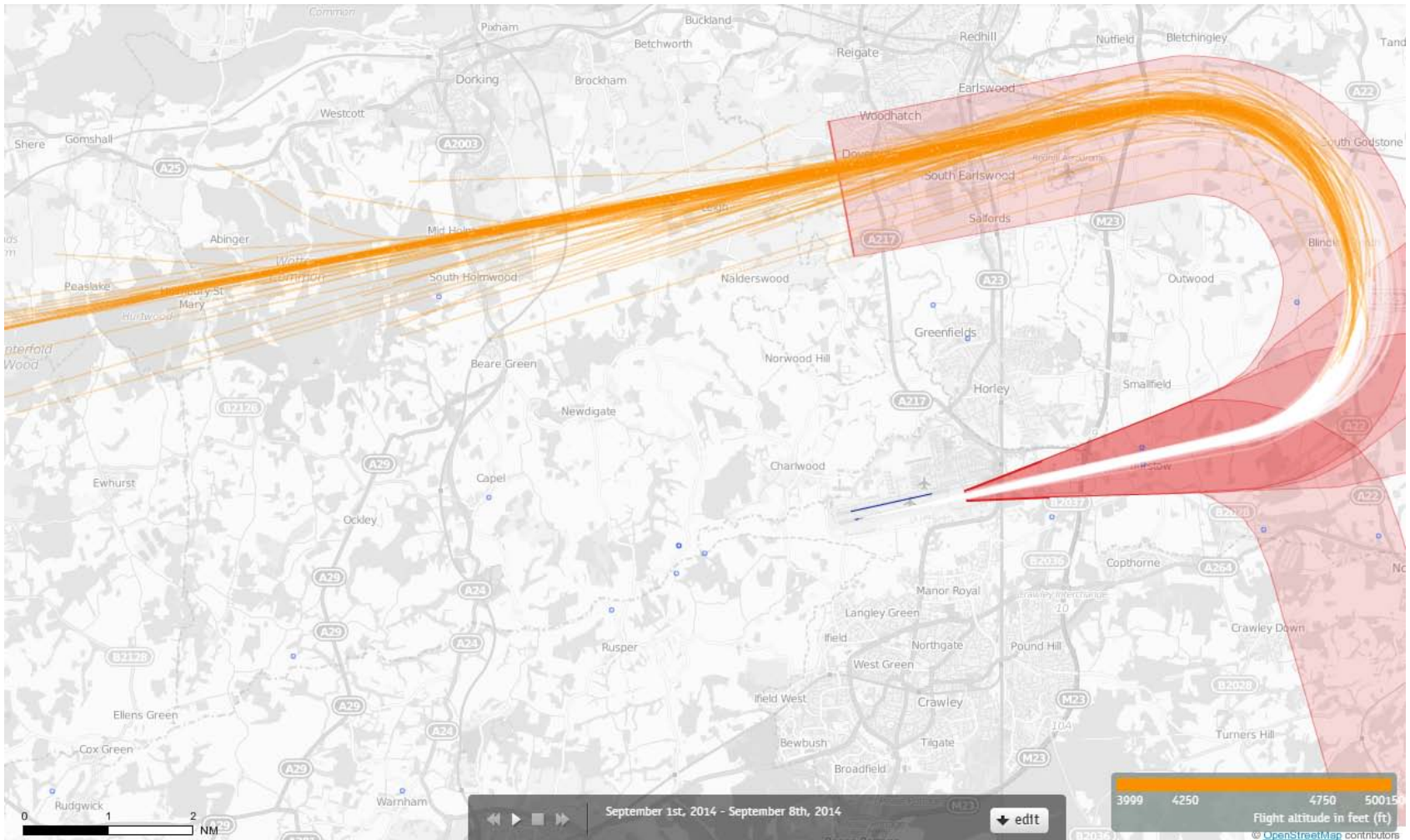
6000-7000ft

08 KEN Departures 1st – 23rd September 2013 4000-5000 feet (305 Aircraft – CONVENTIONAL ONLY)



Orange plots show the points at which an aircraft was between 4000 and 5000ft altitude.

08 KEN Departures 1st – 7th September 2014 4000-5000 feet (355 Aircraft – P-RNAV ONLY)



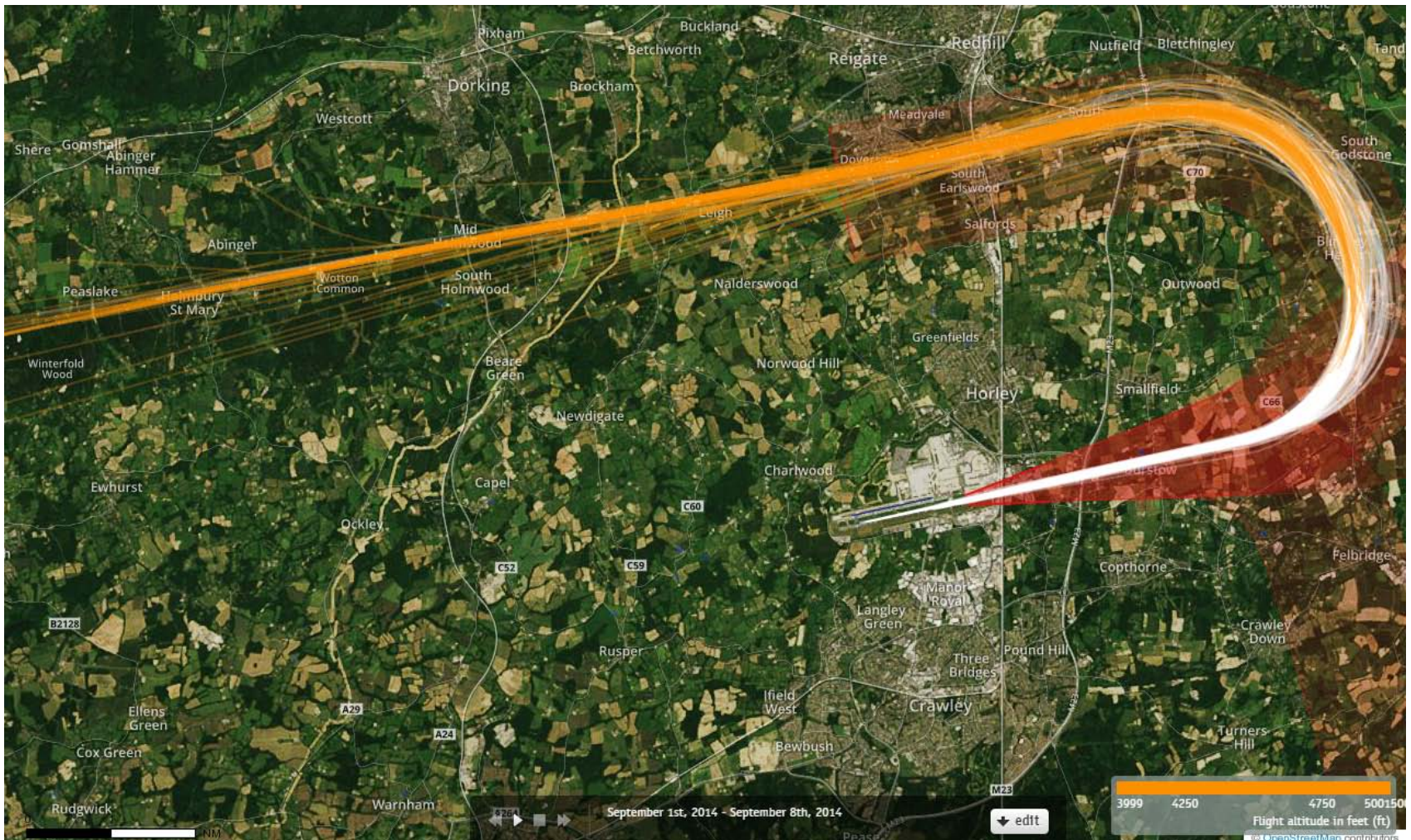
Orange plots show the points at which an aircraft was between 4000 and 5000ft altitude.

08 KEN Departures 1st – 23rd September 2013 4000-5000 feet (305 Aircraft – CONVENTIONAL ONLY)



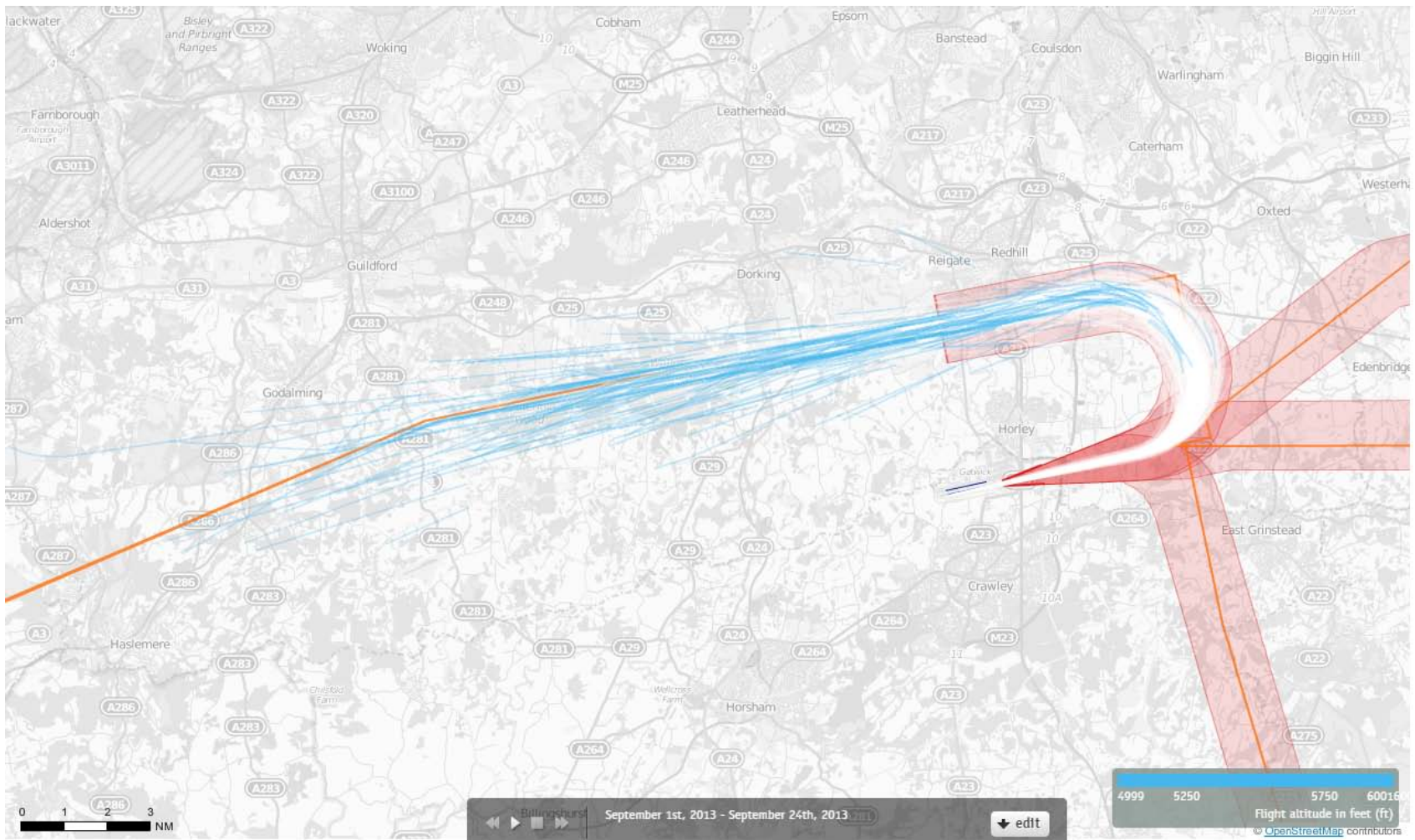
Orange plots show the points at which an aircraft was between 4000 and 5000ft altitude.

08 KEN Departures 1st – 7th September 2014 4000-5000 feet (355 Aircraft – P-RNAV ONLY)



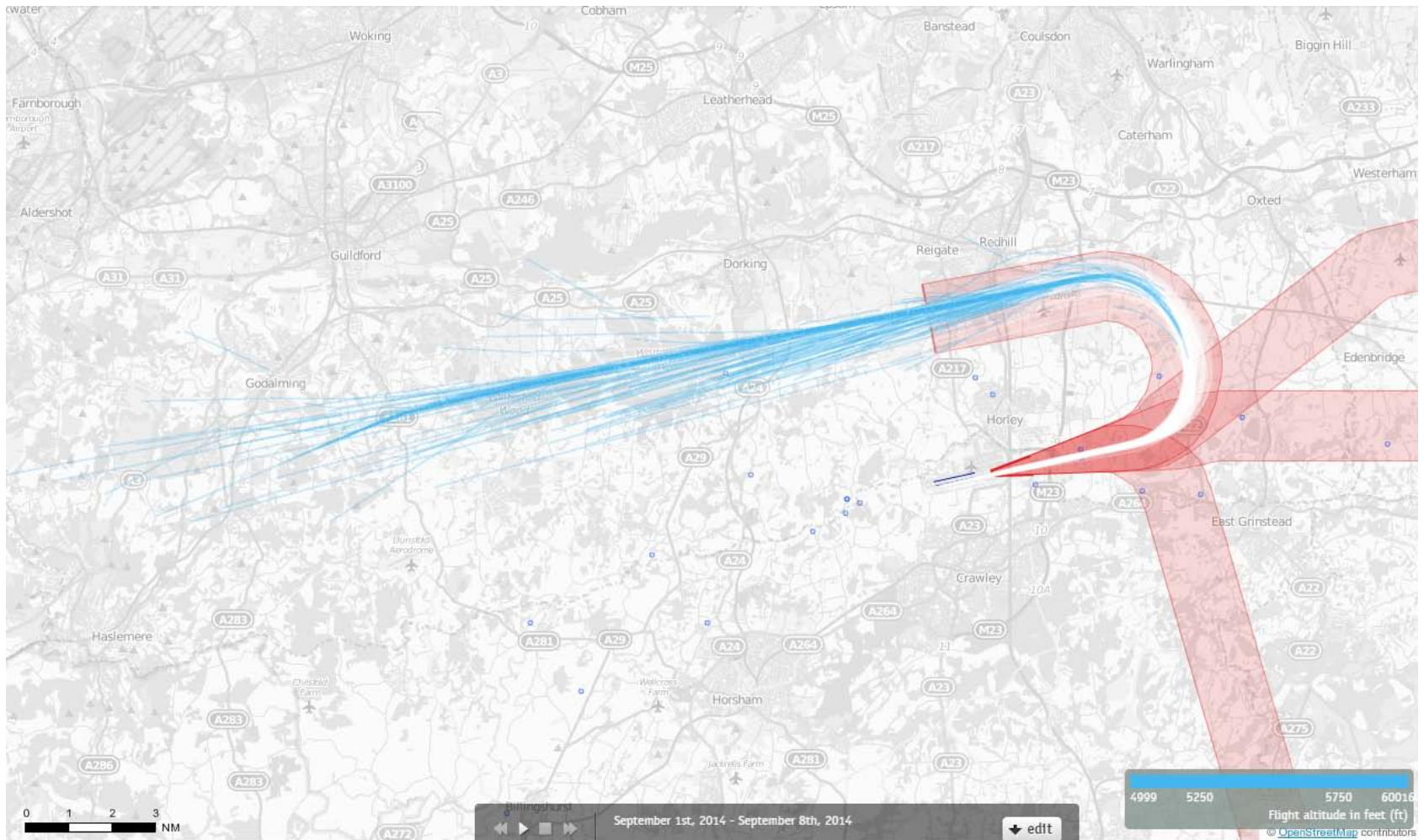
Orange plots show the points at which an aircraft was between 4000 and 5000ft altitude.

08 KEN Departures 1st – 23rd September 2013 5000-6000 feet (305 Aircraft – CONVENTIONAL ONLY)



Blue plots show the points at which an aircraft was between 5000 and 6000ft altitude.

08 KEN Departures 1st – 7th September 2014 5000-6000 feet (335 Aircraft – P-RNAV ONLY)



Blue plots show the points at which an aircraft was between 5000 and 6000ft altitude.

08 KEN Departures 1st – 23rd September 2013 5000-6000 feet (305 Aircraft – CONVENTIONAL ONLY)



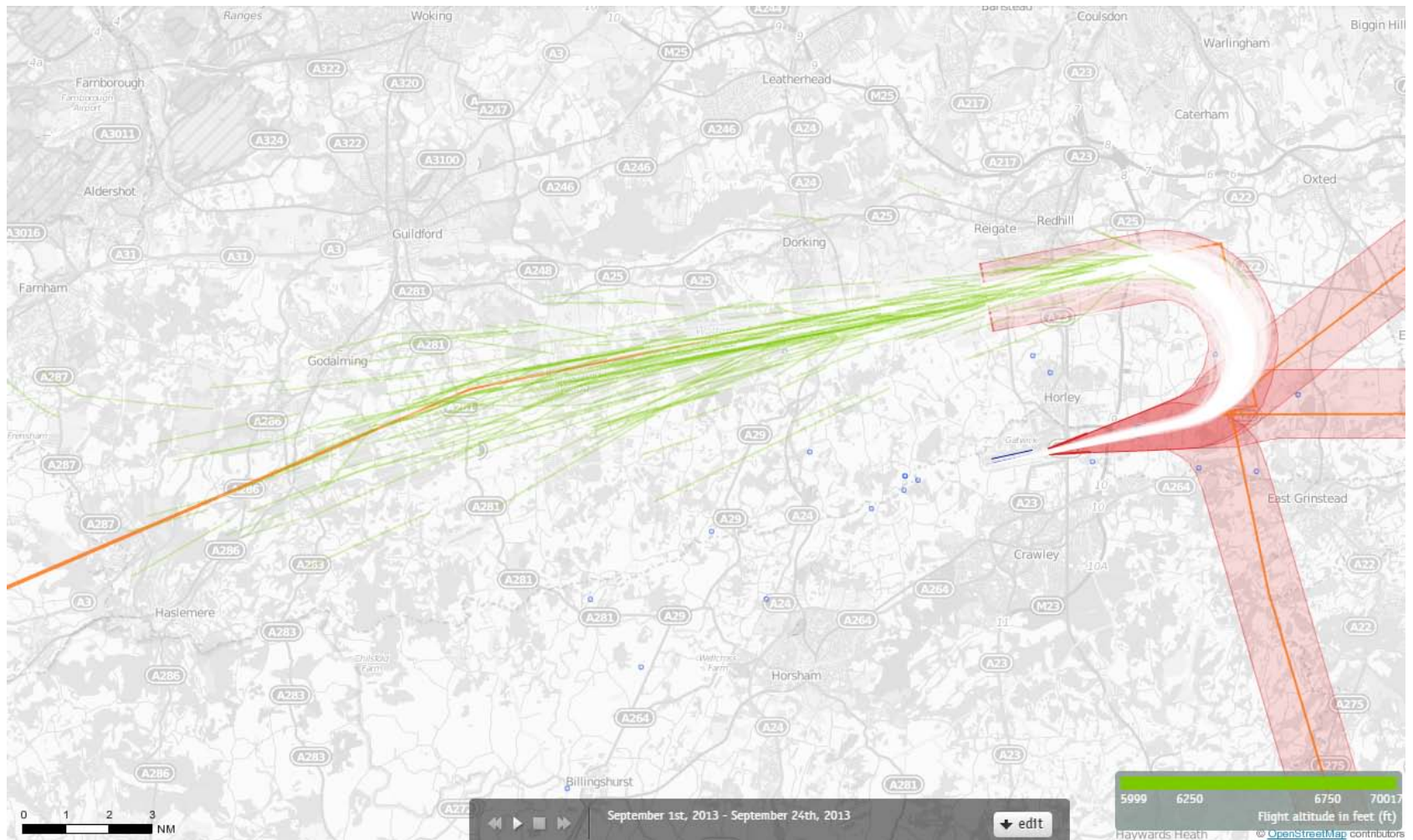
Blue plots show the points at which an aircraft was between 5000 and 6000ft altitude.

08 KEN Departures 1st – 7th September 2014 5000-6000 feet (335 Aircraft – P-RNAV ONLY)



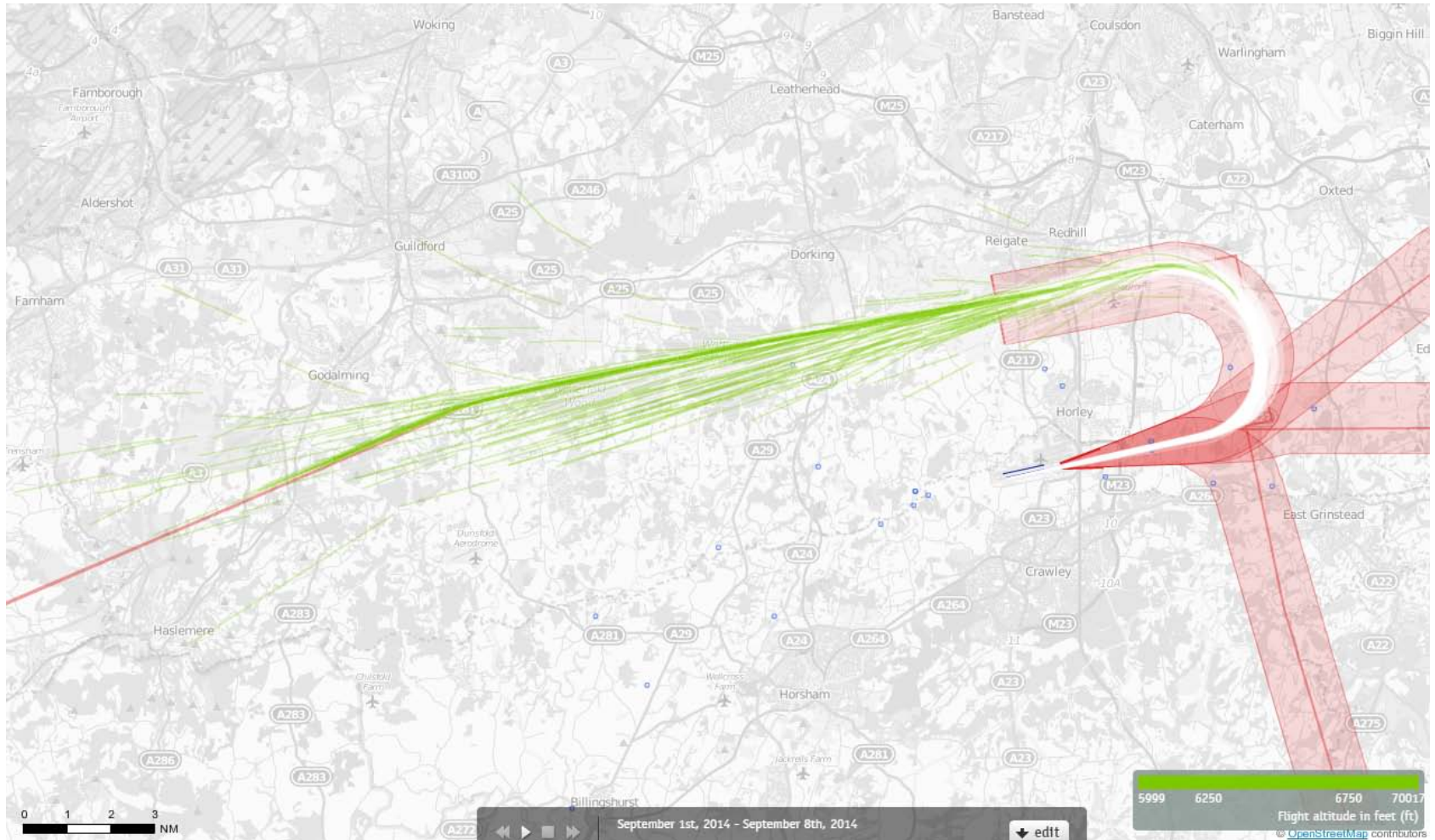
Blue plots show the points at which an aircraft was between 5000 and 6000ft altitude.

08 KEN Departures 1st – 23rd September 2013 6000-7000 feet (305 Aircraft – CONVENTIONAL ONLY)



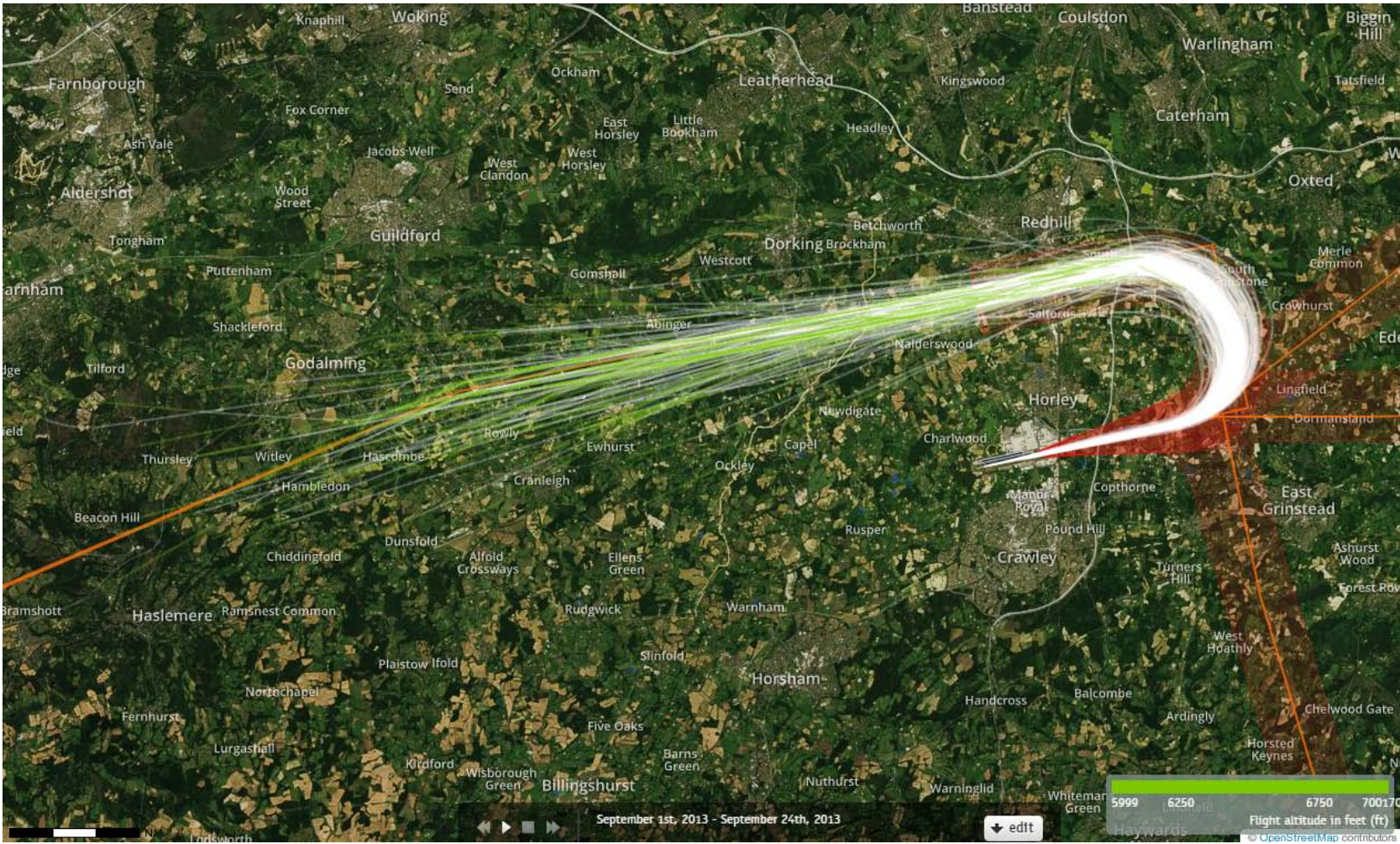
Green plots show the points at which an aircraft was between 6000 and 7000ft altitude.

08 KEN Departures 1st – 7th September 2014 6000-7000 feet (335 Aircraft – P-RNAV ONLY)



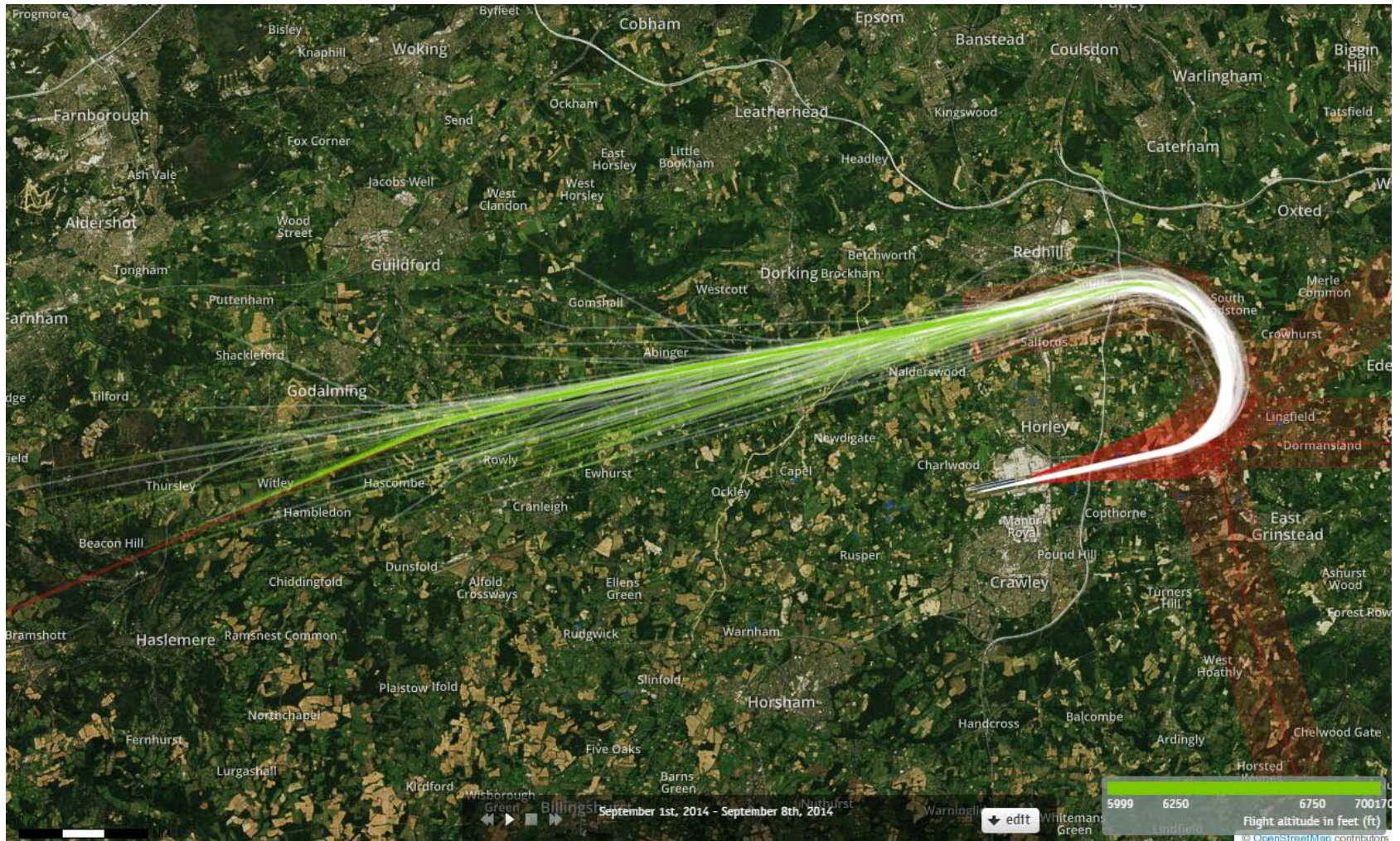
Green plots show the points at which an aircraft was between 6000 and 7000ft altitude.

08 KEN Departures 1st – 23rd September 2013 6000-7000 feet (305 Aircraft – CONVENTIONAL ONLY)



Green plots show the points at which an aircraft was between 6000 and 7000ft altitude.

08 KEN Departures 1st – 7th September 2014 6000-7000 feet (335 Aircraft – P-RNAV ONLY)



Green plots show the points at which an aircraft was between 6000 and 7000ft altitude.