

All SIDs Within 26 LAMBOURNE Route 4

Altitude Bands

4000-5000ft

5000-6000ft

6000-7000ft

26 LAM Departures 1st-5th September 2013

4000-5000 feet (575 Aircraft – CONVENTIONAL ONLY)



Orange plots show the points at which an aircraft was between 4000 and 5000ft altitude.

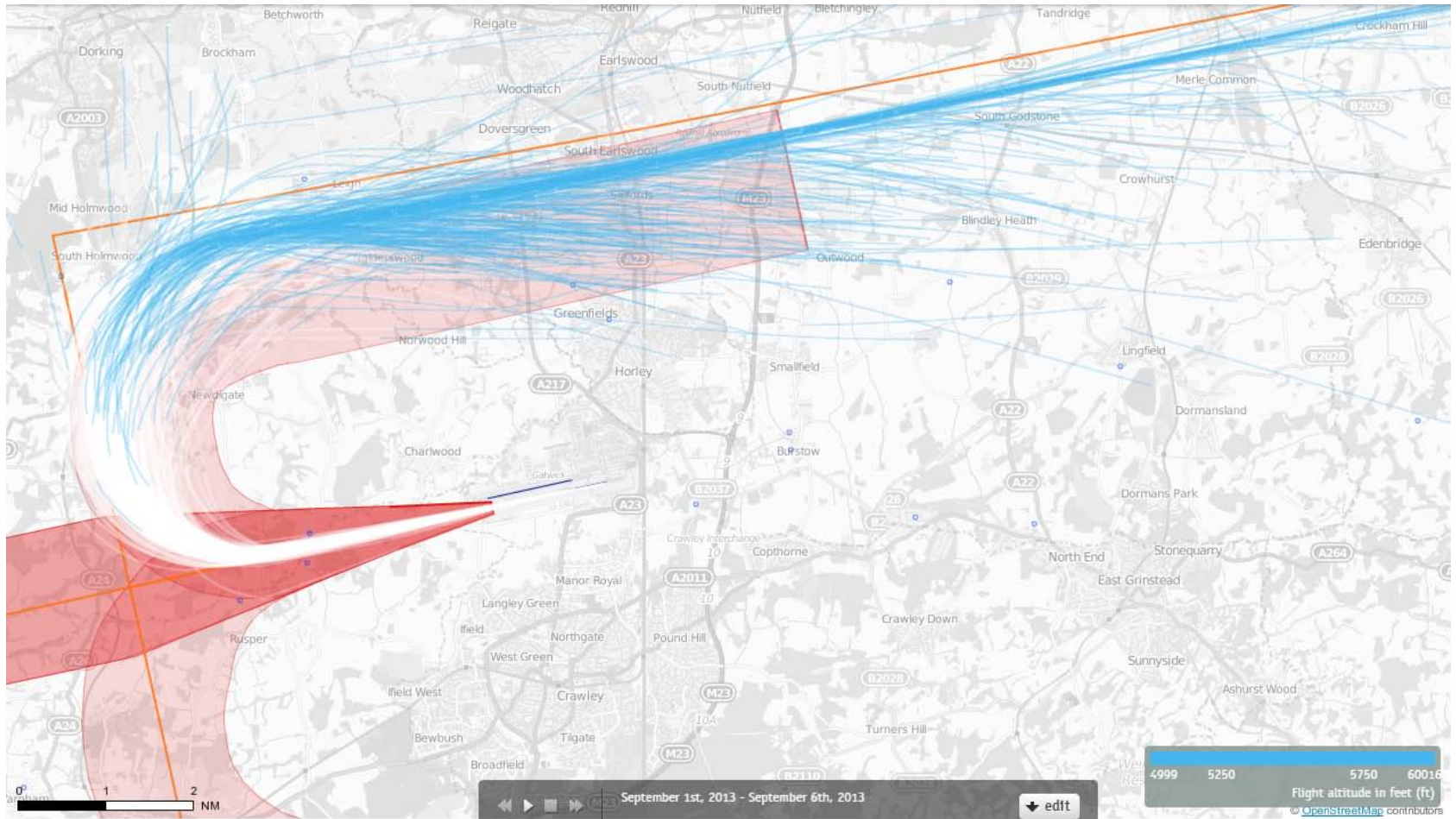
26 LAM Departures 1st – 7th September 2014 4000-5000 feet (574 Aircraft – P-RNAV ONLY)



Orange plots show the points at which an aircraft was between 4000 and 5000ft altitude.

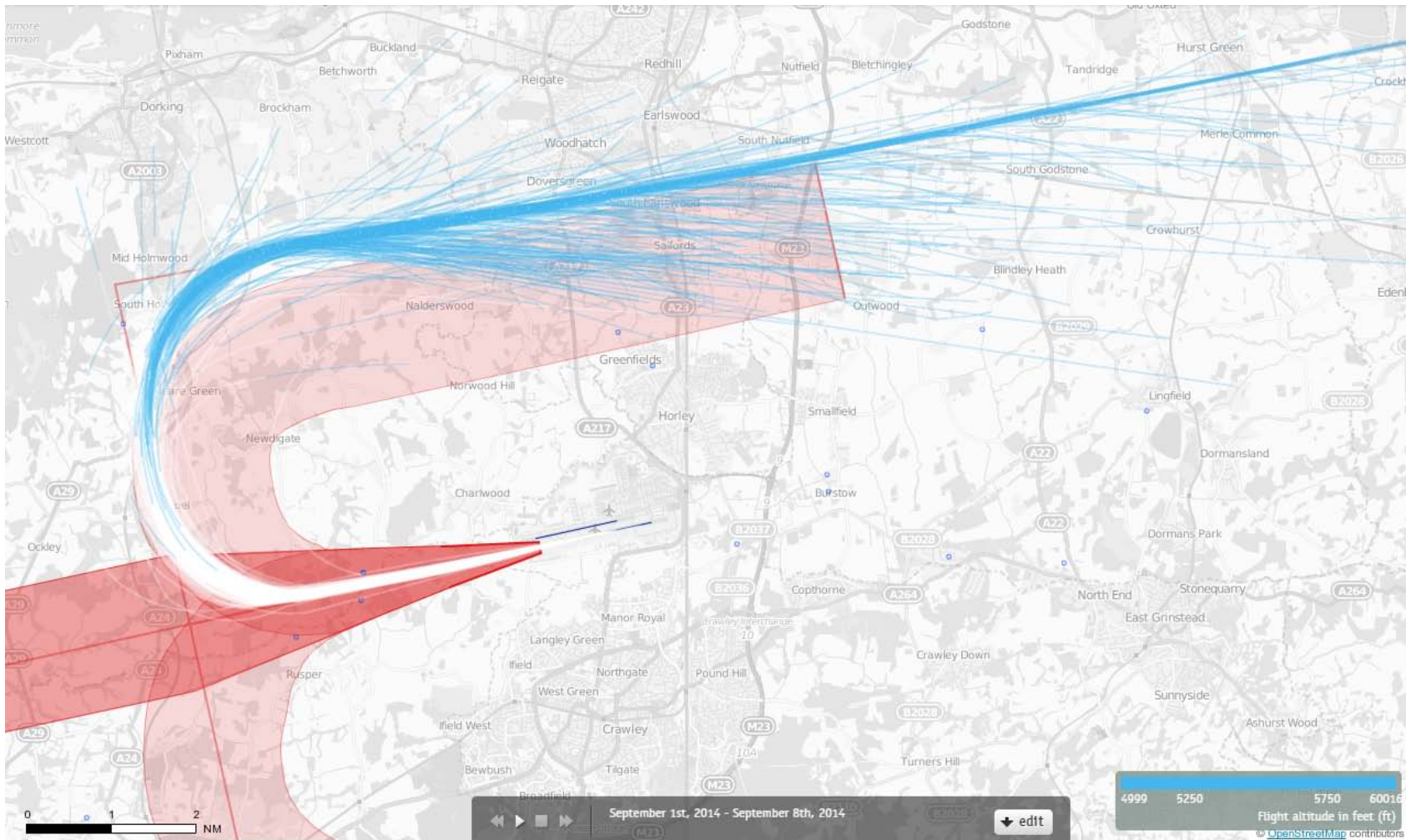
26 LAM Departures 1st-5th September 2013

5000-6000 feet (575 Aircraft – CONVENTIONAL ONLY)



Blue plots show the points at which an aircraft was between 5000 and 6000ft altitude.

26 LAM Departures 1st – 7th September 2014 5000-6000 feet (574 Aircraft – P-RNAV ONLY)



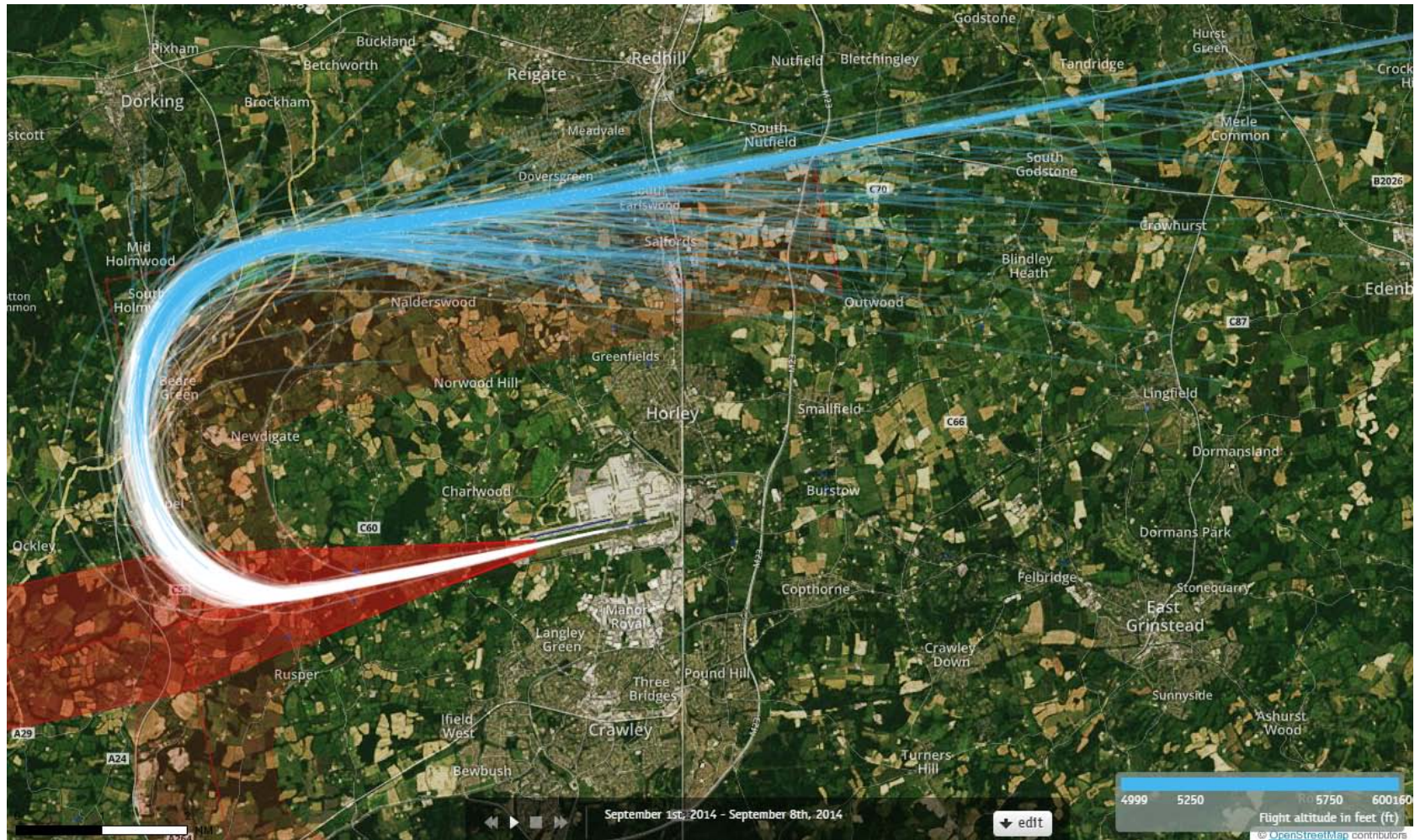
Blue plots show the points at which an aircraft was between 5000 and 6000ft altitude.

26 LAM Departures 1st-5th September 2013 5000-6000 feet (575 Aircraft – CONVENTIONAL ONLY)



Blue plots show the points at which an aircraft was between 5000 and 6000ft altitude.

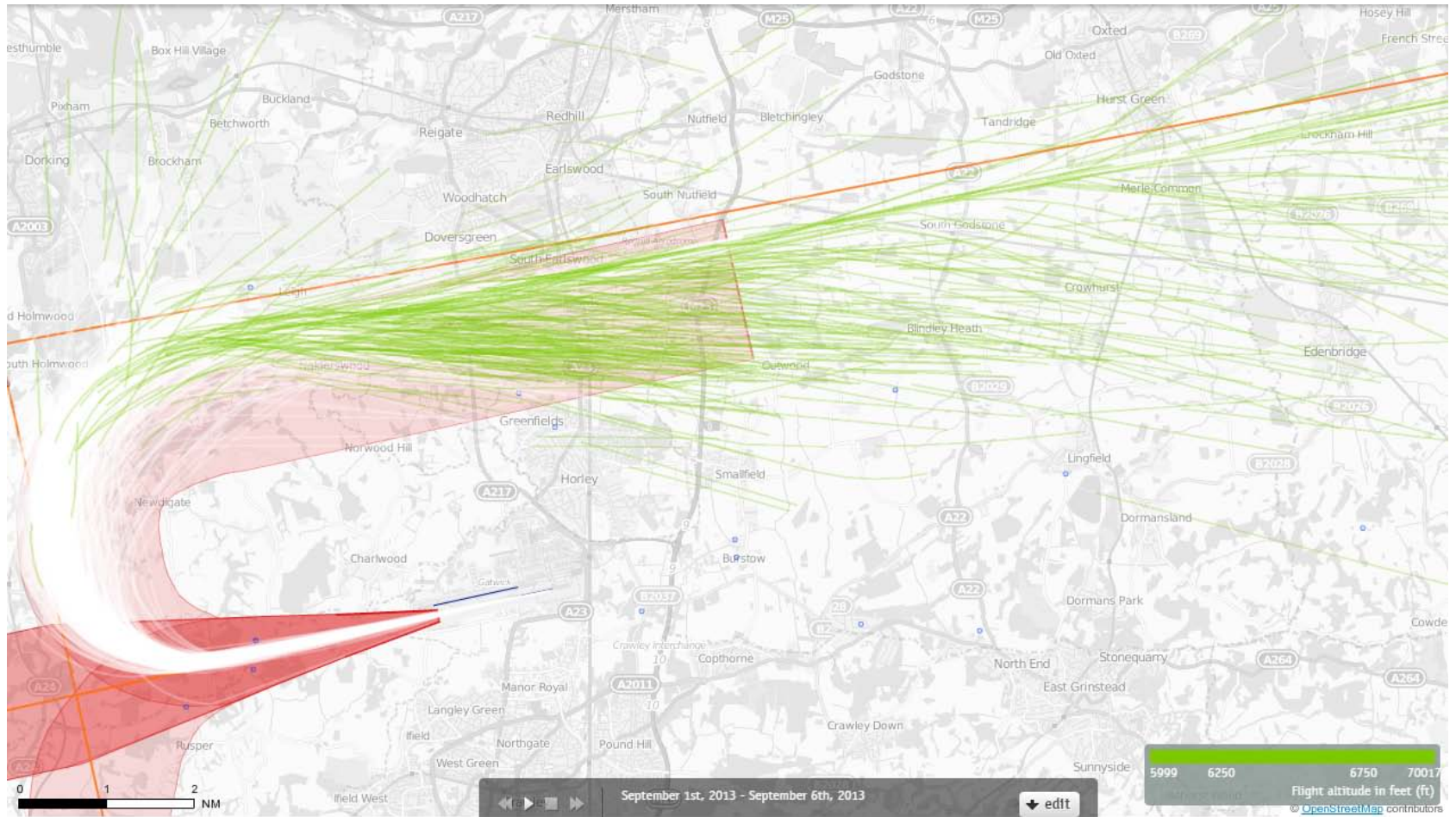
26 LAM Departures 1st – 7th September 2014 5000-6000 feet (574 Aircraft – P-RNAV ONLY)



Blue plots show the points at which an aircraft was between 5000 and 6000ft altitude.

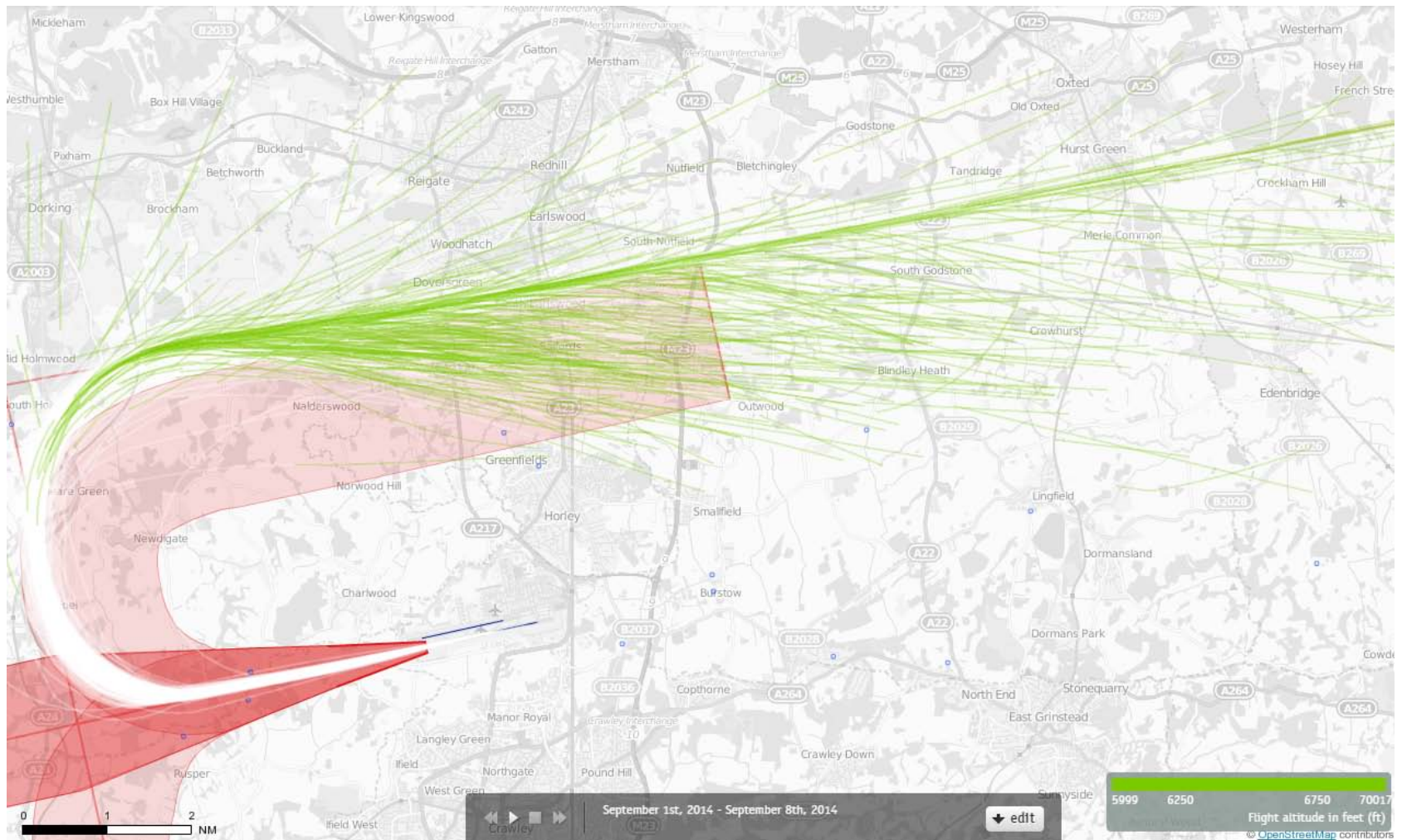
26 LAM Departures 1st-5th September 2013

6000-7000 feet (575 Aircraft – CONVENTIONAL ONLY)



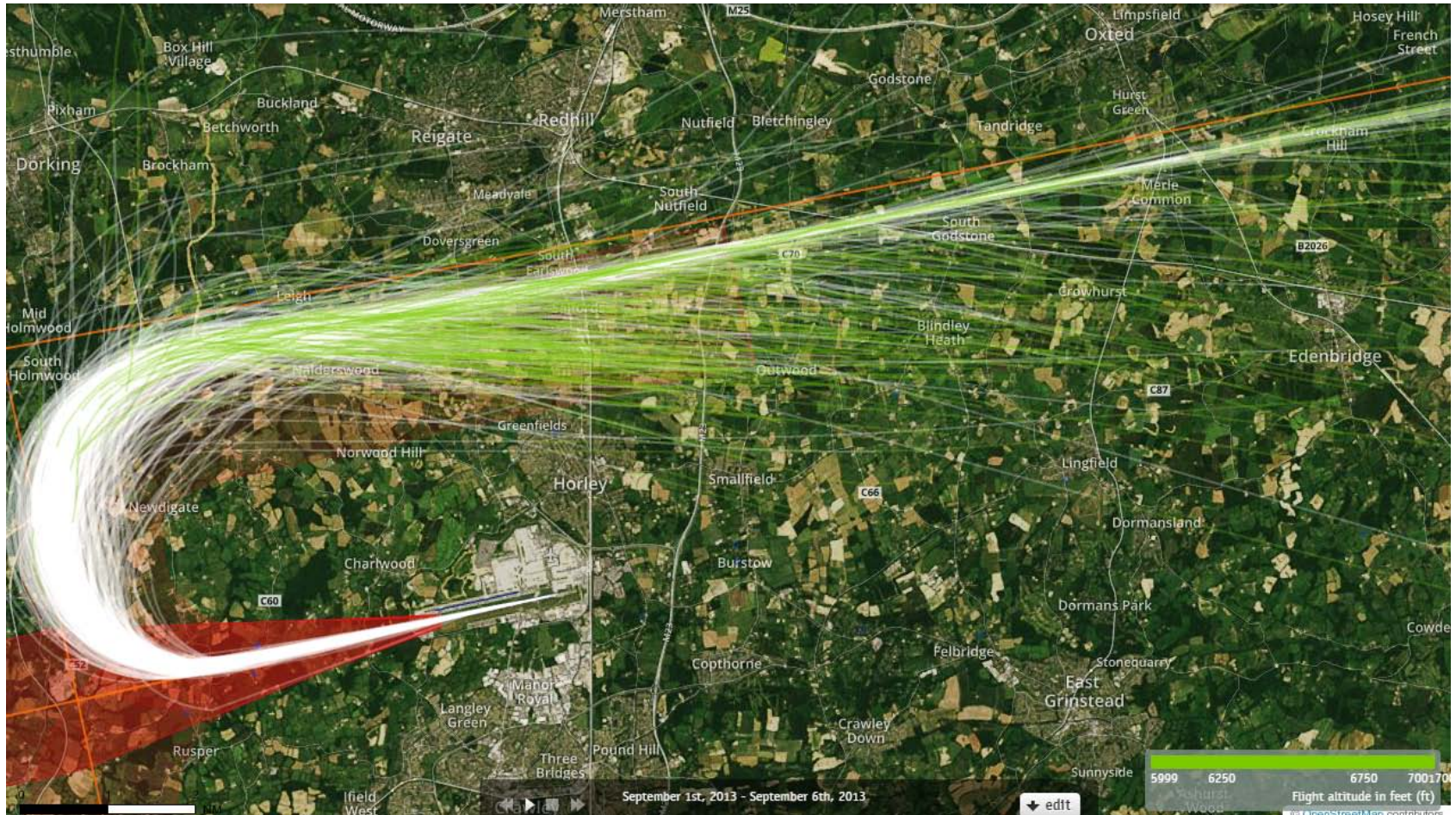
Green plots show the points at which an aircraft was between 6000 and 7000ft altitude.

26 LAM Departures 1st – 7th September 2014 6000-7000 feet (574 Aircraft – P-RNAV ONLY)



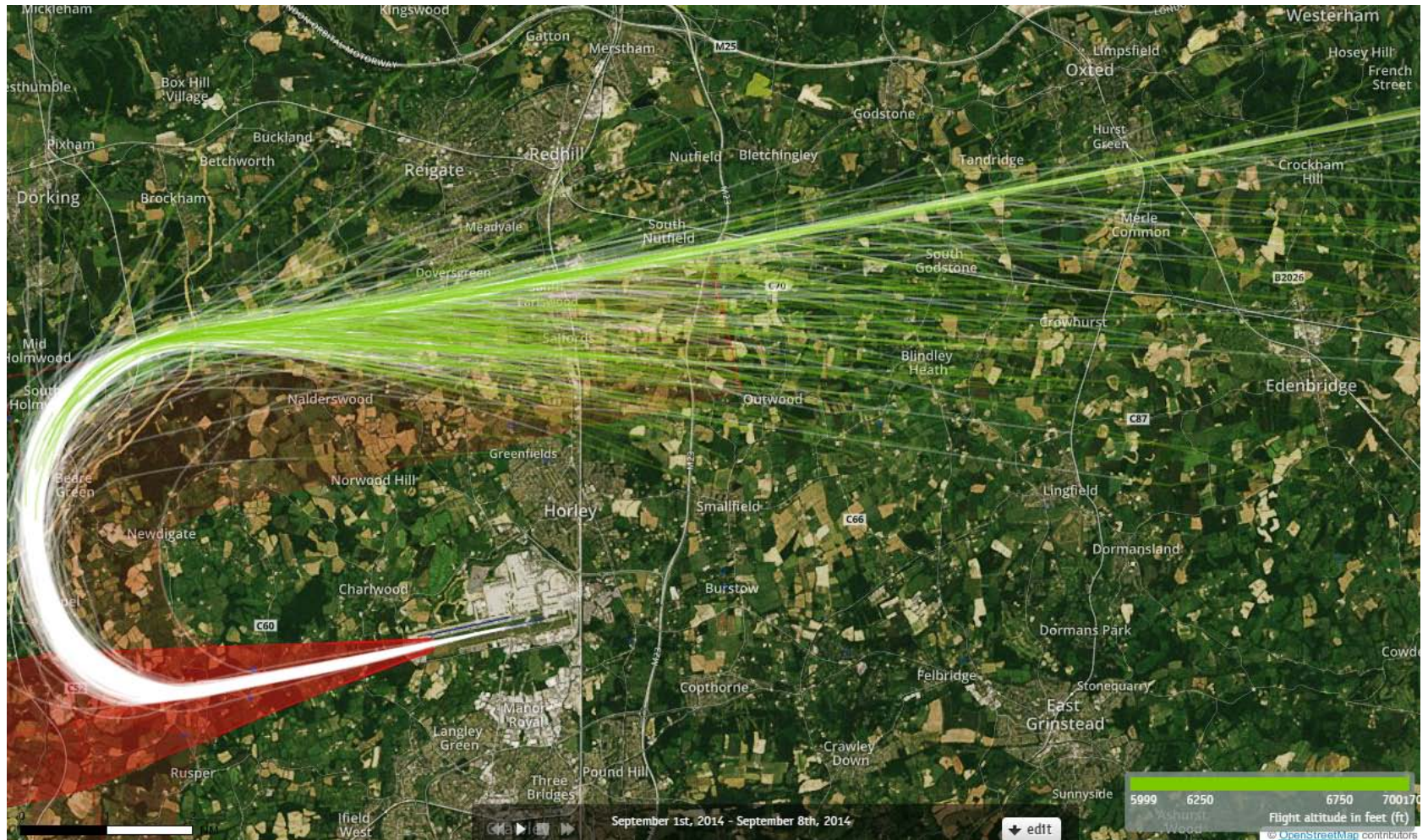
Green plots show the points at which an aircraft was between 6000 and 7000ft altitude.

26 LAM Departures 1st-5th September 2013 6000-7000 feet (575 Aircraft – CONVENTIONAL ONLY)



Green plots show the points at which an aircraft was between 6000 and 7000ft altitude.

26 LAM Departures 1st – 7th September 2014 6000-7000 feet (574 Aircraft – P-RNAV ONLY)



Green plots show the points at which an aircraft was between 6000 and 7000ft altitude.