

08 SEAFORD

Route 2

Altitude Bands

4000-5000ft

5000-6000ft

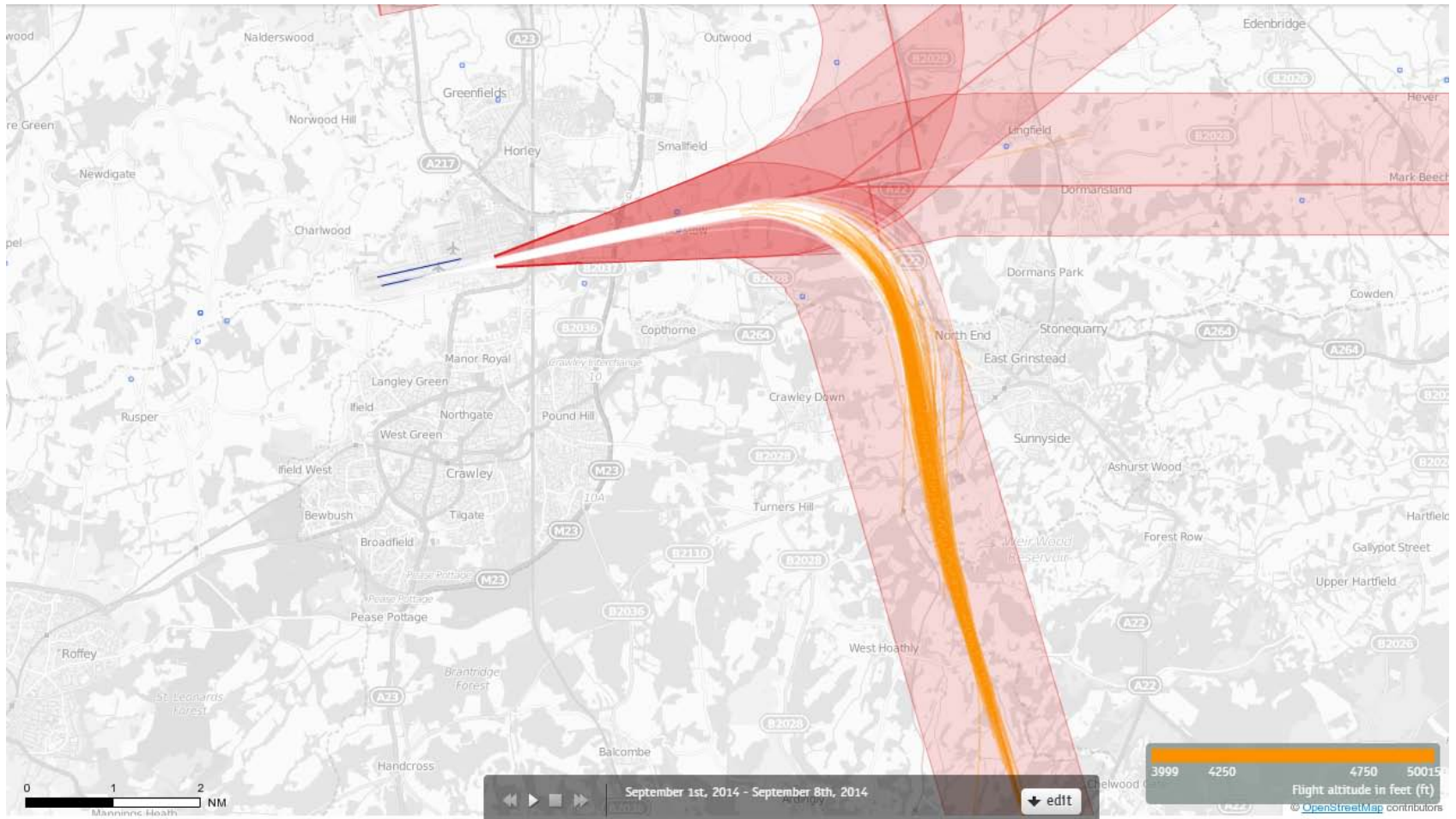
6000-7000ft

08 SFD Departures March 2014 4000-5000 feet (307 Aircraft – CONVENTIONAL ONLY)



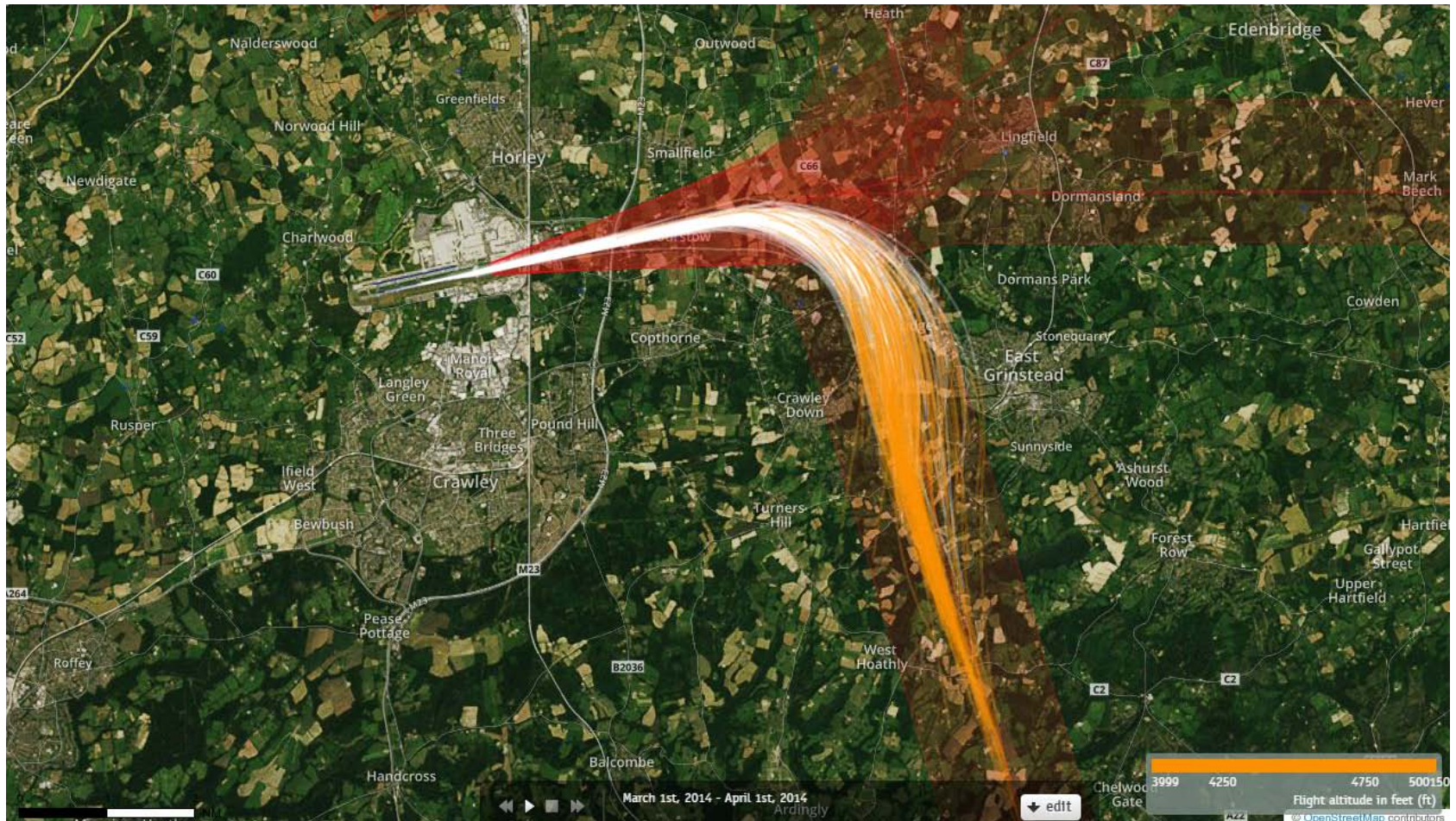
Orange plots shows the points at which an aircraft was between 4000 and 5000ft altitude.

08 SFD Departures 1st – 7th September 2014 4000-5000 feet (554 Aircraft – P-RNAV ONLY)



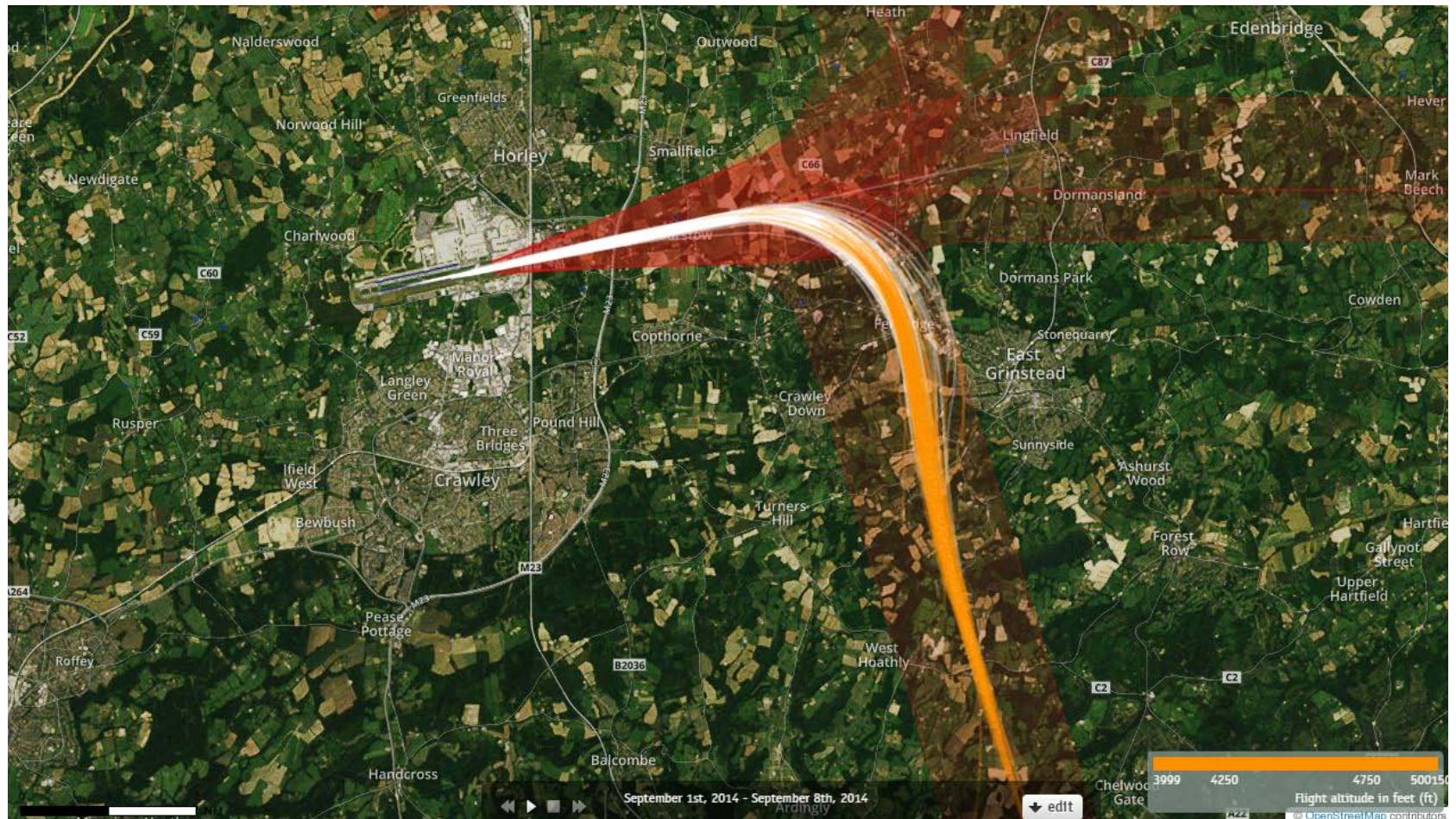
Orange plots shows the points at which an aircraft was between 4000 and 5000ft altitude.

08 SFD Departures March 2014 4000-5000 feet (307 Aircraft – CONVENTIONAL ONLY)



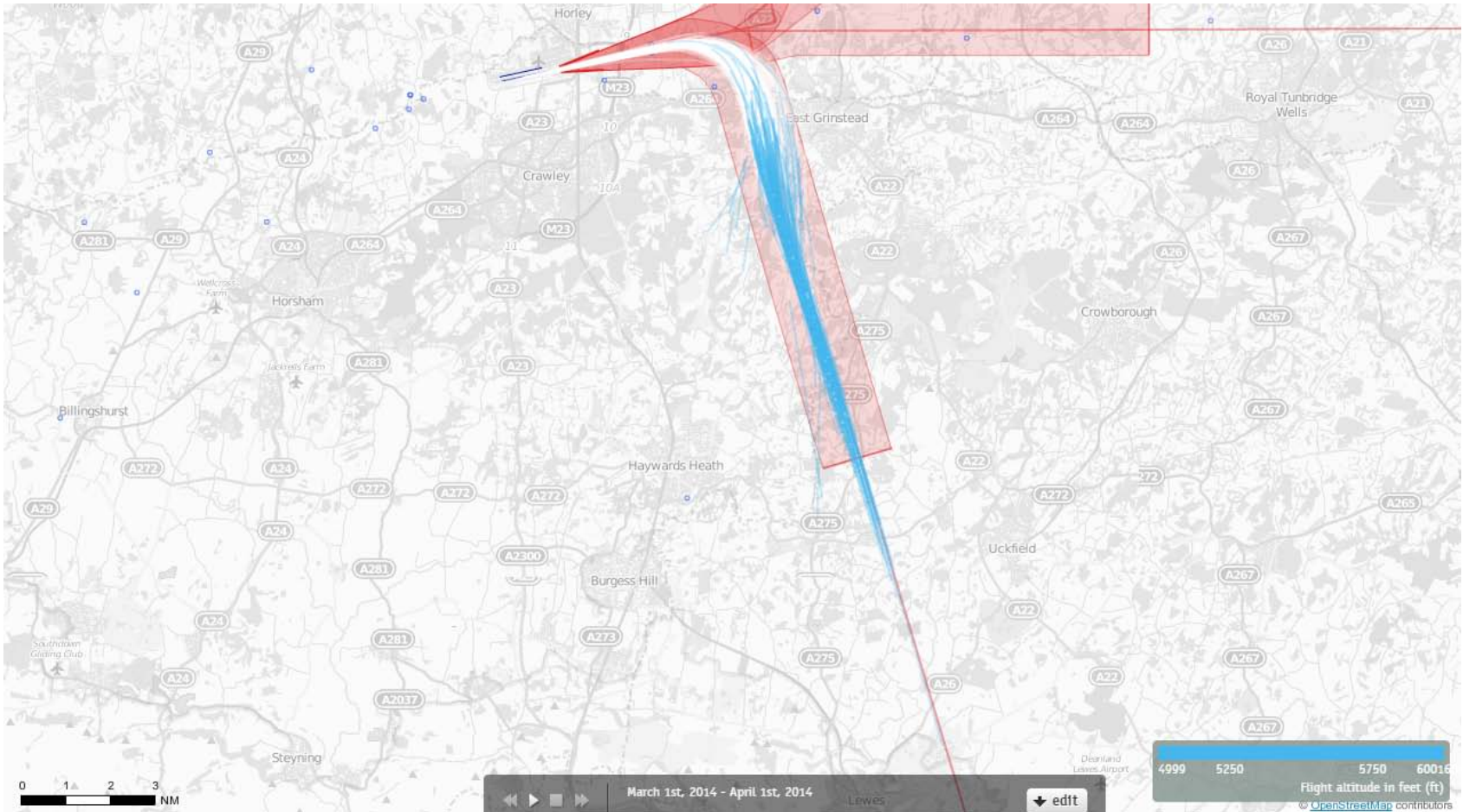
Orange plots shows the points at which an aircraft was between 4000 and 5000ft altitude.

08 SFD Departures 1st – 7th September 2014 4000-5000 feet (554 Aircraft – P-RNAV ONLY)



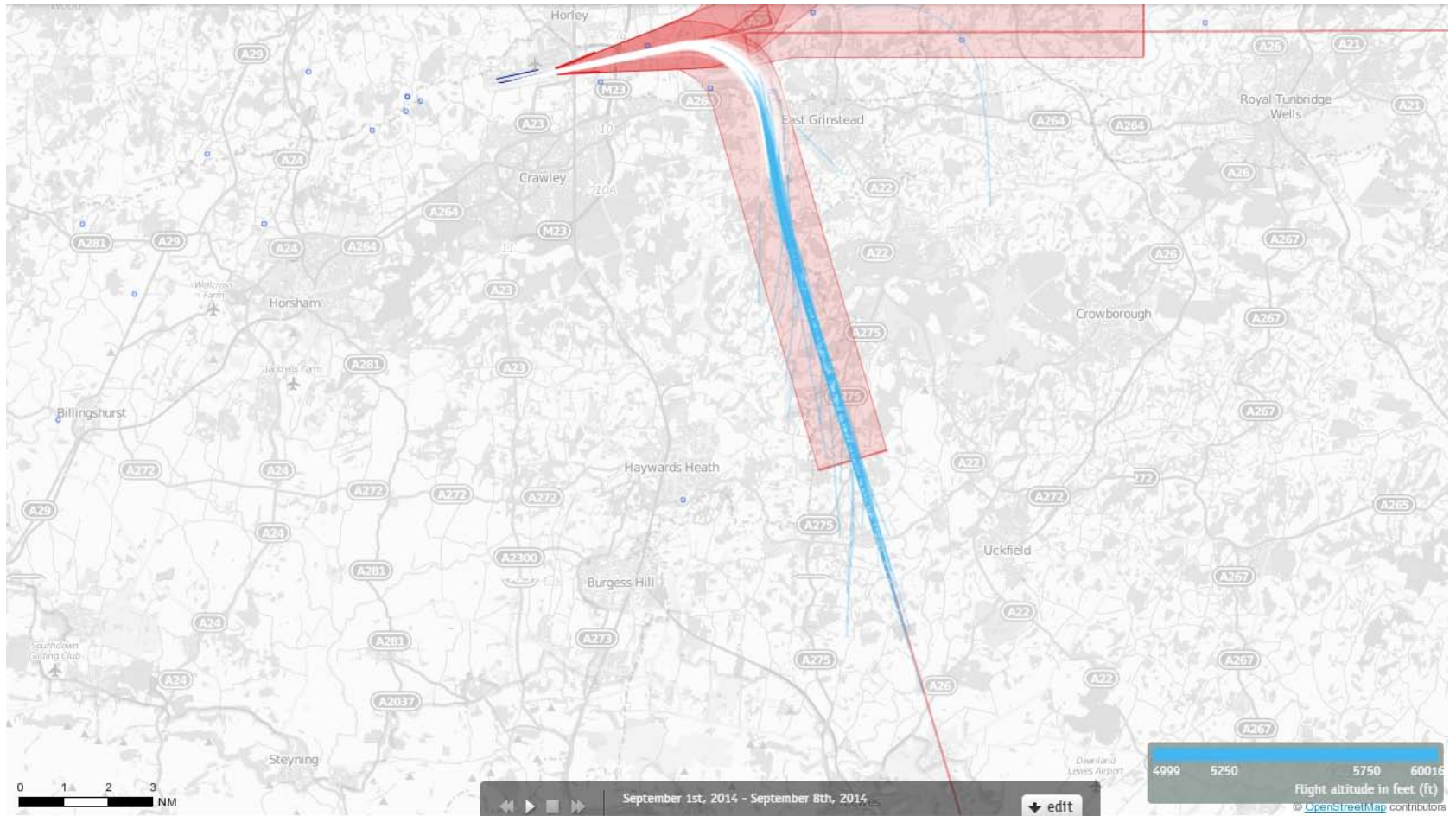
Orange plots shows the points at which an aircraft was
between 4000 and 5000ft altitude.

08 SFD Departures March 2014 5000-6000 feet (307 Aircraft – CONVENTIONAL ONLY)



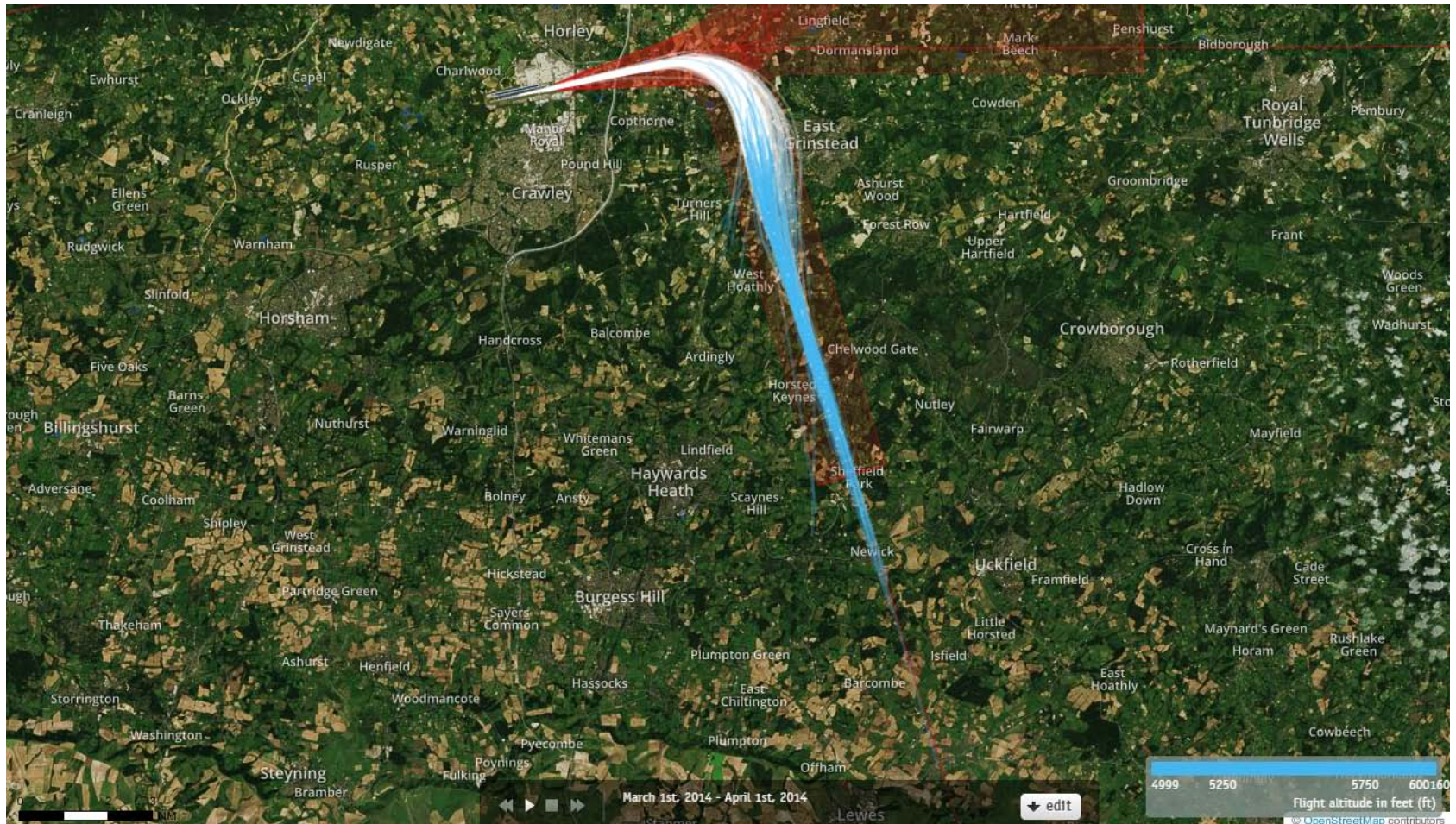
Blue plots show the points at which an aircraft was between 5000 and 6000ft altitude.

08 SFD Departures 1st – 7th September 2014 5000-6000 feet (554 Aircraft – P-RNAV ONLY)



Blue plots show the points at which an aircraft was between 5000 and 6000ft altitude.

08 SFD Departures March 2014 5000-6000 feet (307 Aircraft – CONVENTIONAL ONLY)



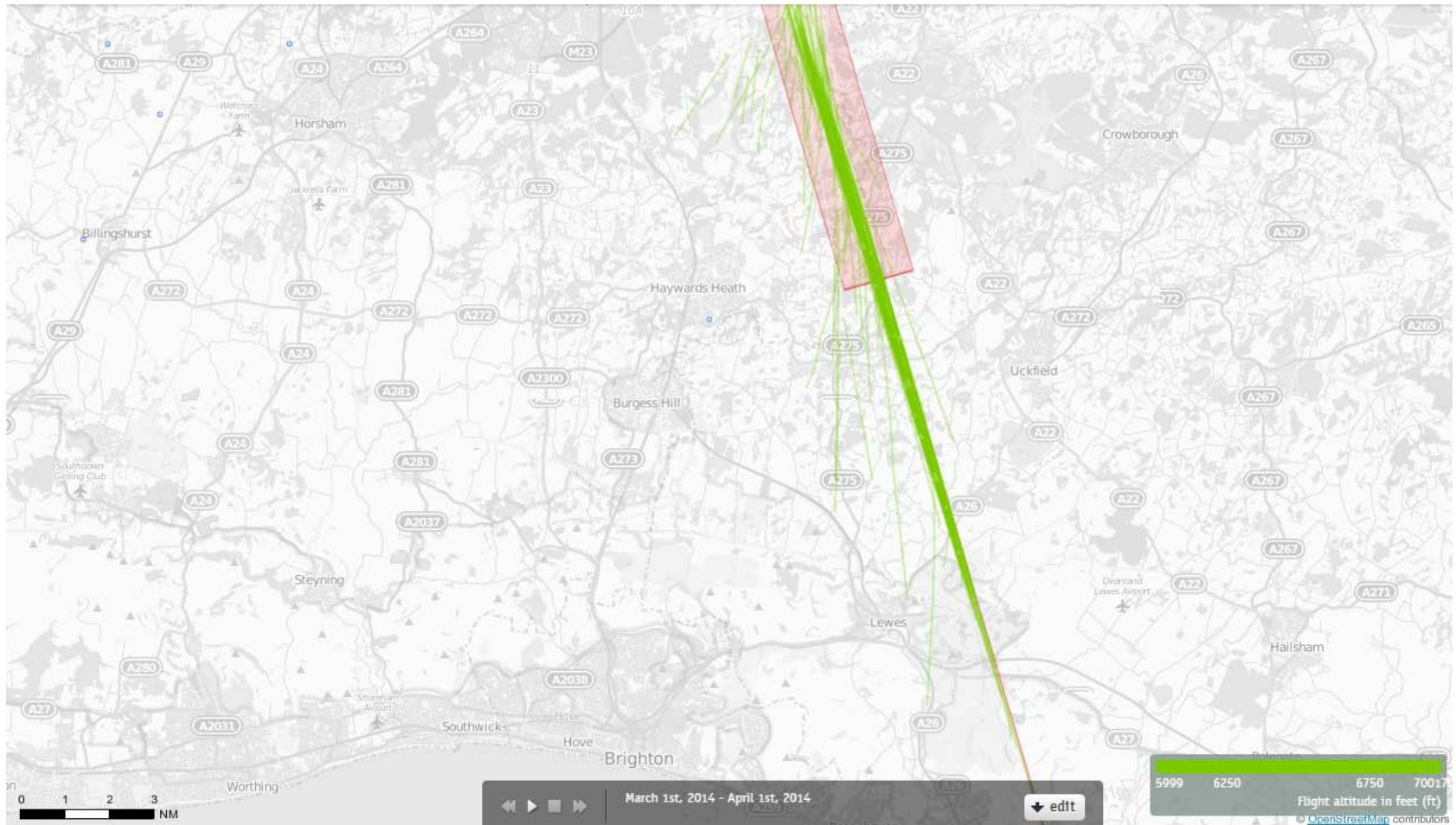
Blue plots show the points at which an aircraft was between 5000 and 6000ft altitude.

08 SFD Departures 1st – 7th September 2014 5000-6000 feet (554 Aircraft – P-RNAV ONLY)



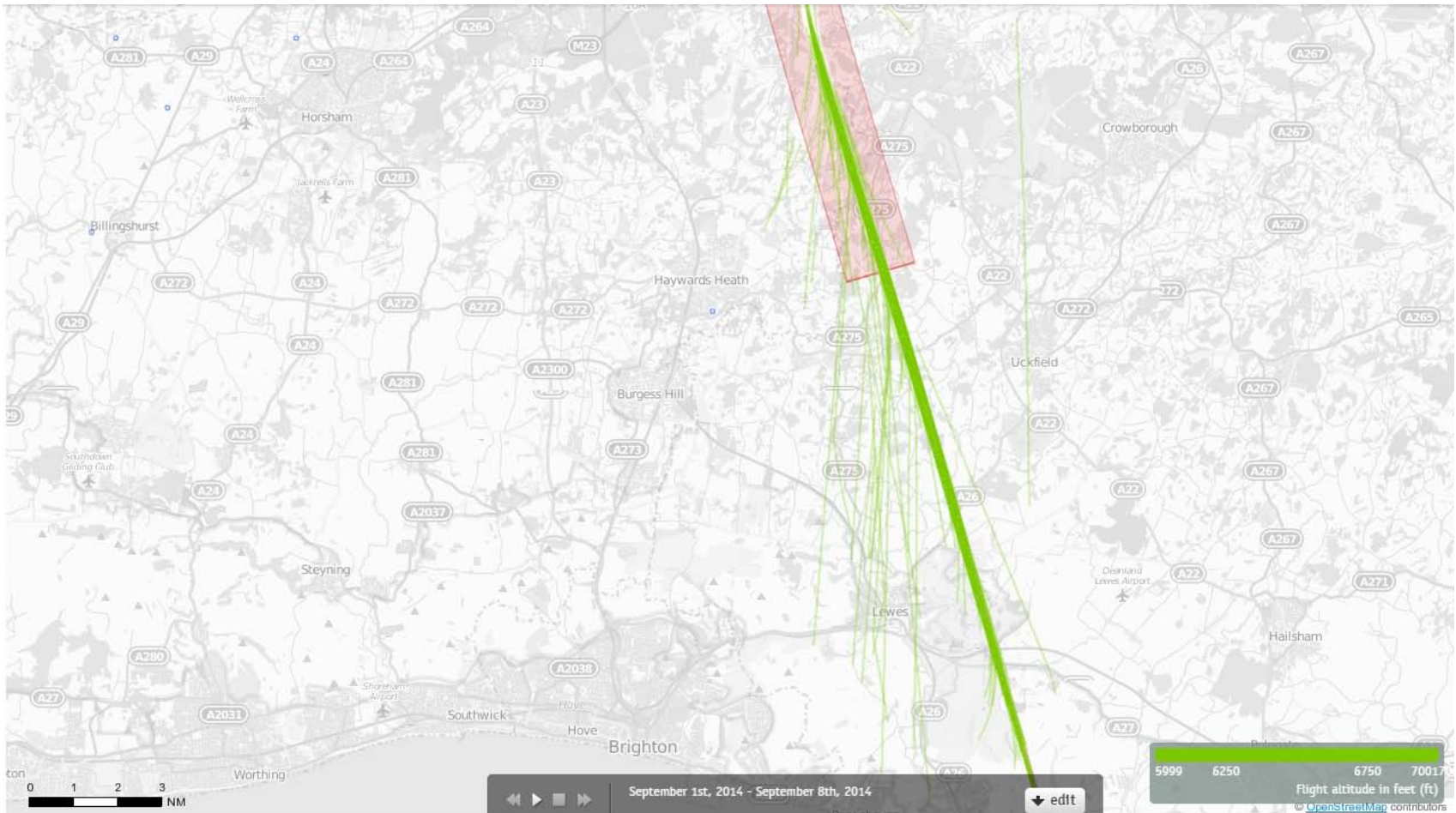
Blue plots show the points at which an aircraft was between 5000 and 6000ft altitude.

08 SFD Departures March 2014 6000-7000 feet (307 Aircraft – CONVENTIONAL ONLY)



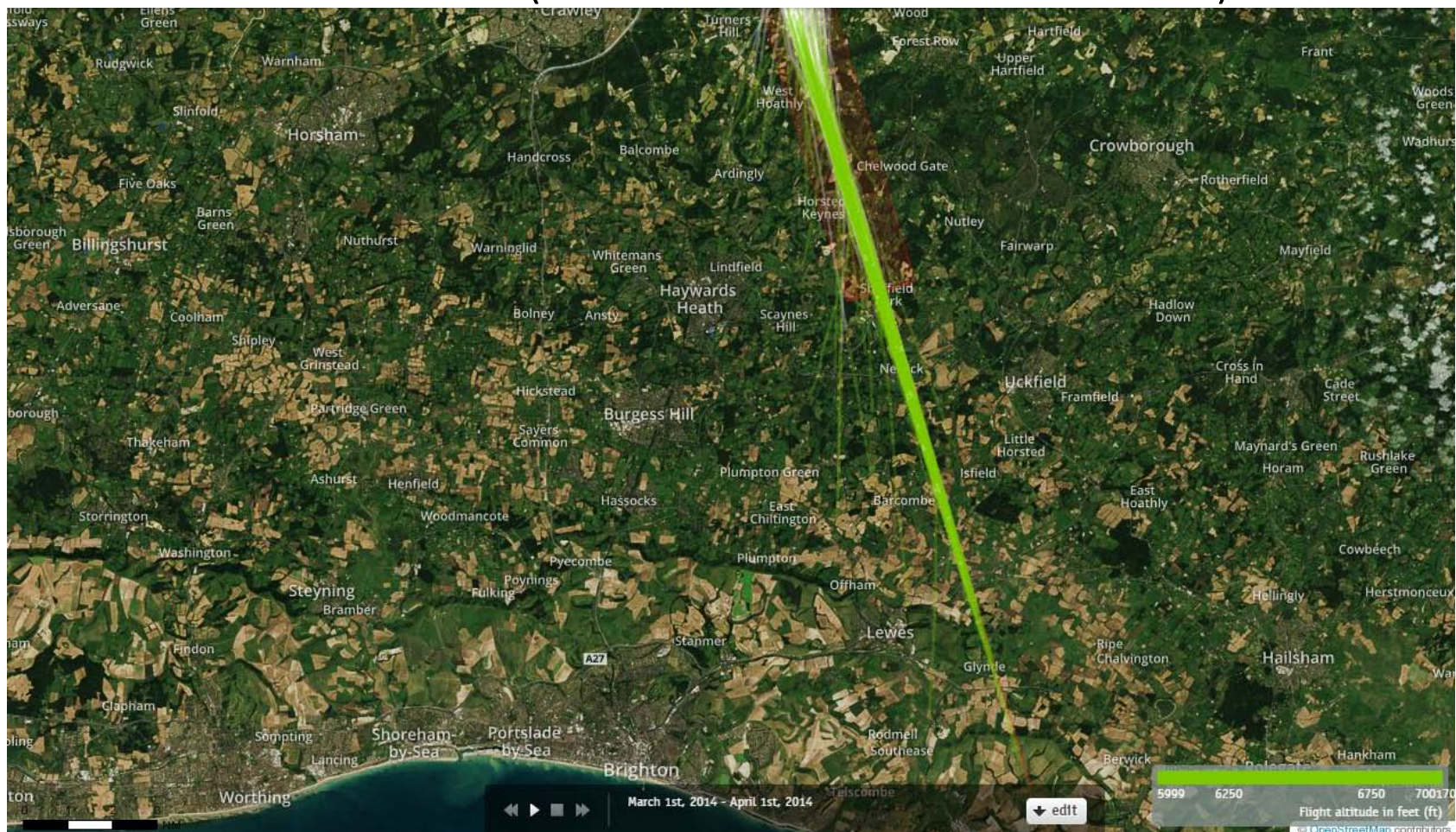
Green plots show the points at which an aircraft was between 6000 and 7000ft altitude.

08 SFD Departures 1st – 7th September 2014 6000-7000 feet (554 Aircraft – P-RNAV ONLY)



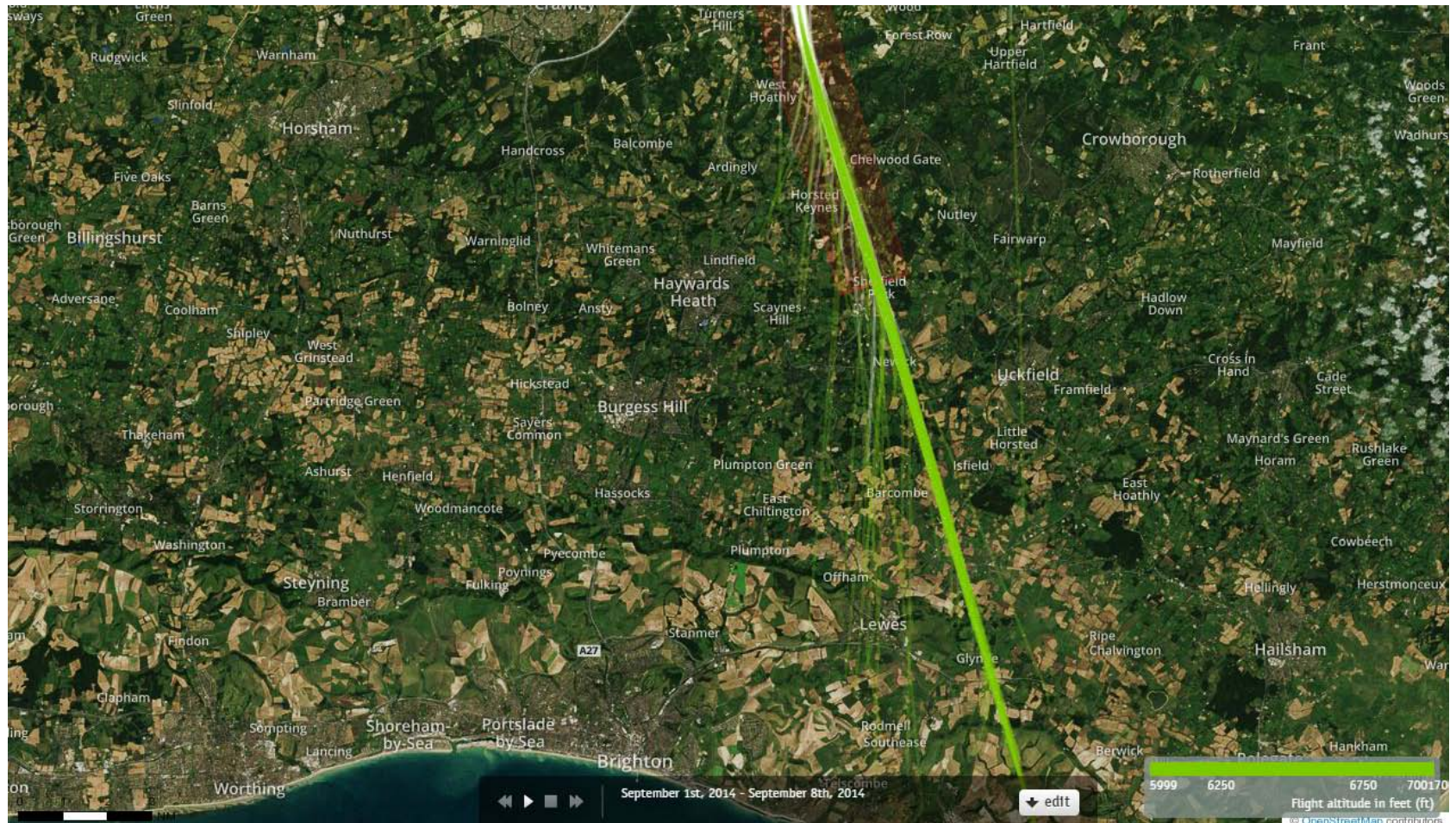
Green plots show the points at which an aircraft was between 6000 and 7000ft altitude.

08 SFD Departures March 2014 6000-7000 feet (307 Aircraft – CONVENTIONAL ONLY)



Green plots show the points at which an aircraft was between 6000 and 7000ft altitude.

08 SFD Departures 1st – 7th September 2014 6000-7000 feet (554 Aircraft – P-RNAV ONLY)



Green plots show the points at which an aircraft was between 6000 and 7000ft altitude.