

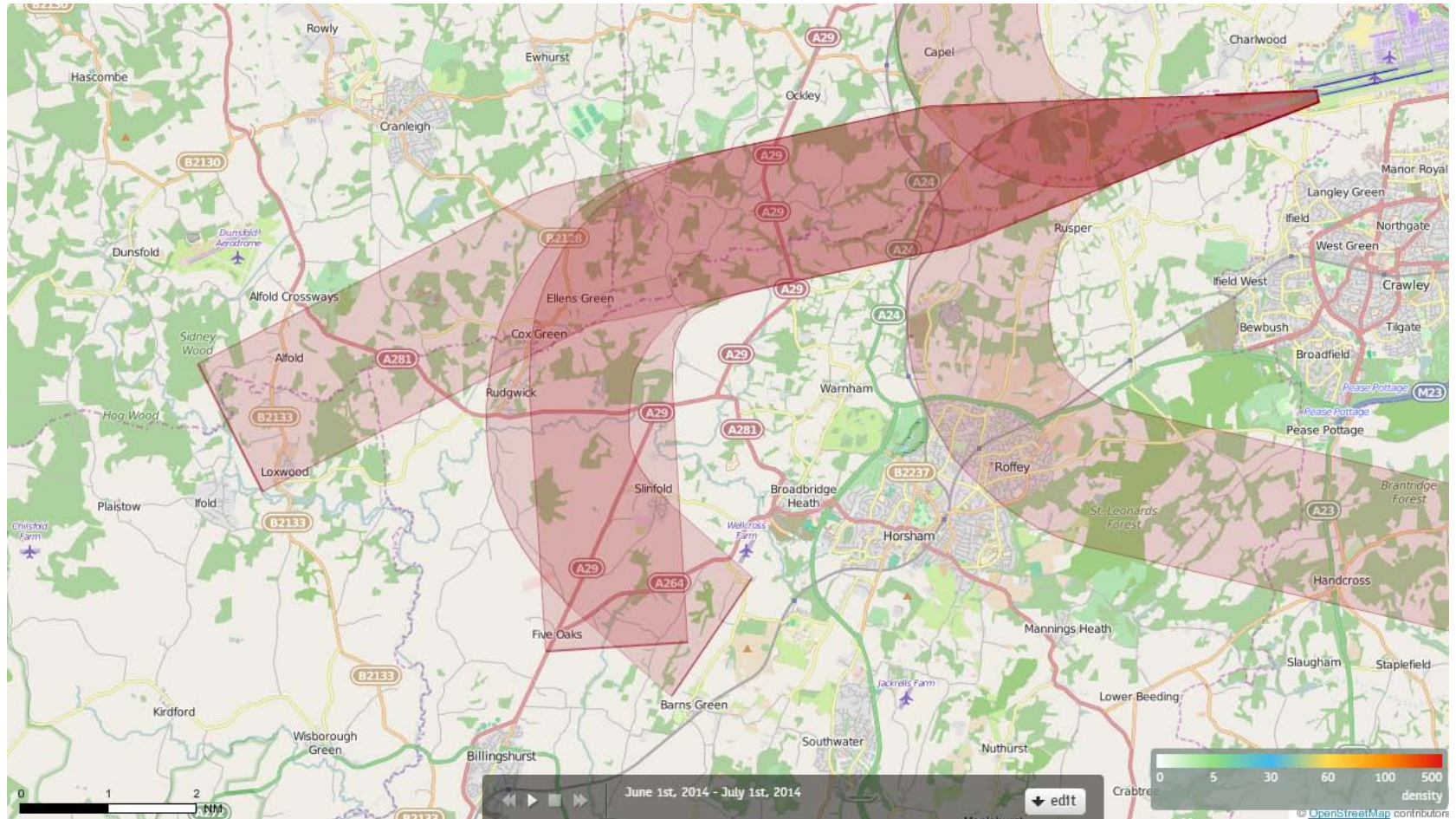
26 SOUTHAMPTON

Route 1

Pre and Post P-RNAV

26SOUTHAMPTON Density June 2014

20 Aircraft – Showing CONVENTIONAL Departures Only



Track density

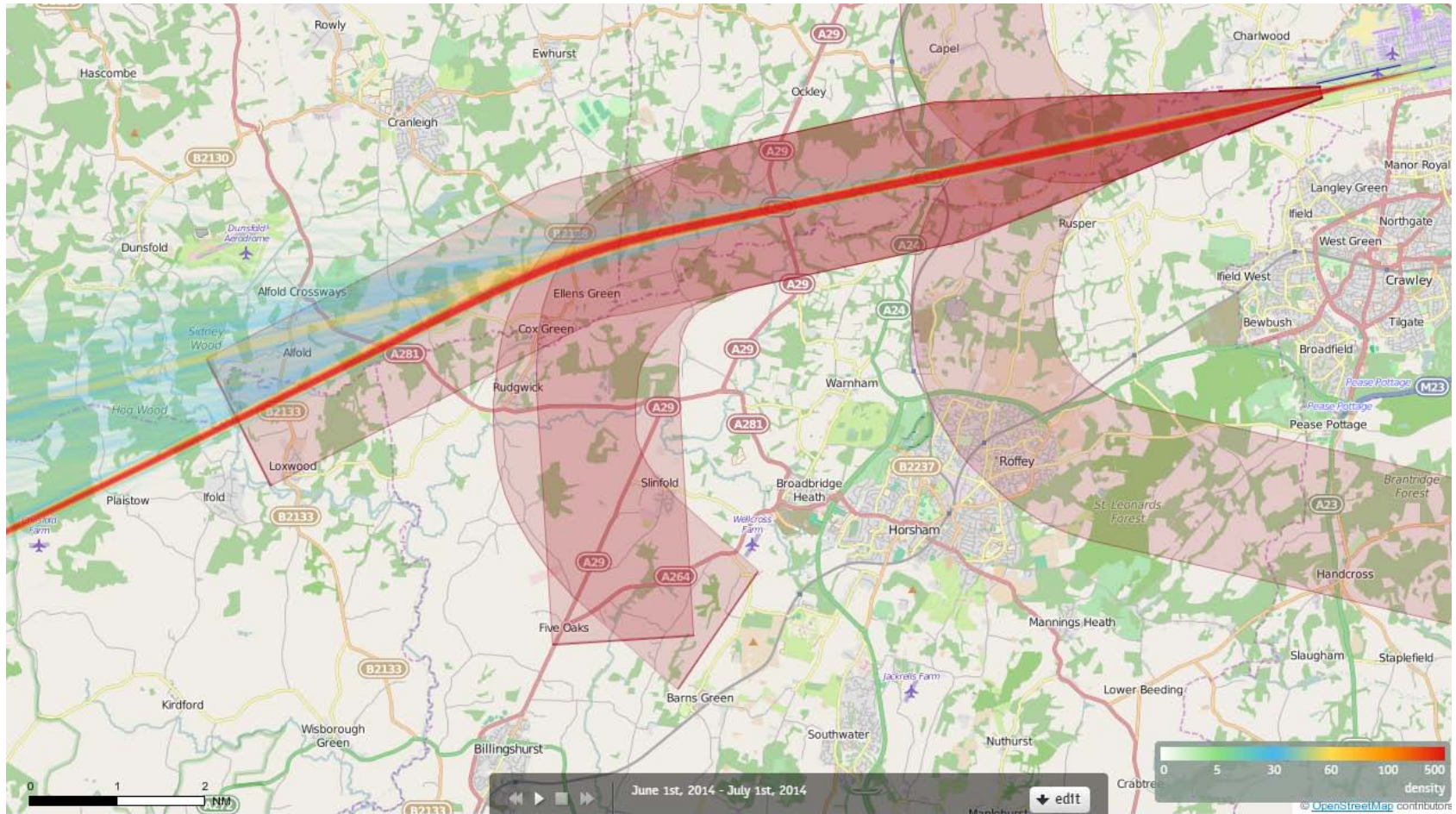
Each track is drawn as a line which has a width of just a few pixels and each pixel on the screen counts how often a 'track line' comes across this pixel when drawing all the tracks.

When all the tracks have been drawn, each pixel decides upon its colour based on the number of times a 'track line' has come across that pixel. The conversion from "count" to "colour" is guided by the numbers and colours given in the current Palette.

Counts in between are mapped to colours in between. If 100 were orange and 200 were red, then 150 would be coloured some orangy red.

26SOUTHAMPTON Density June 2014

1577 Aircraft – Showing P-RNAV Departures Only



Track density

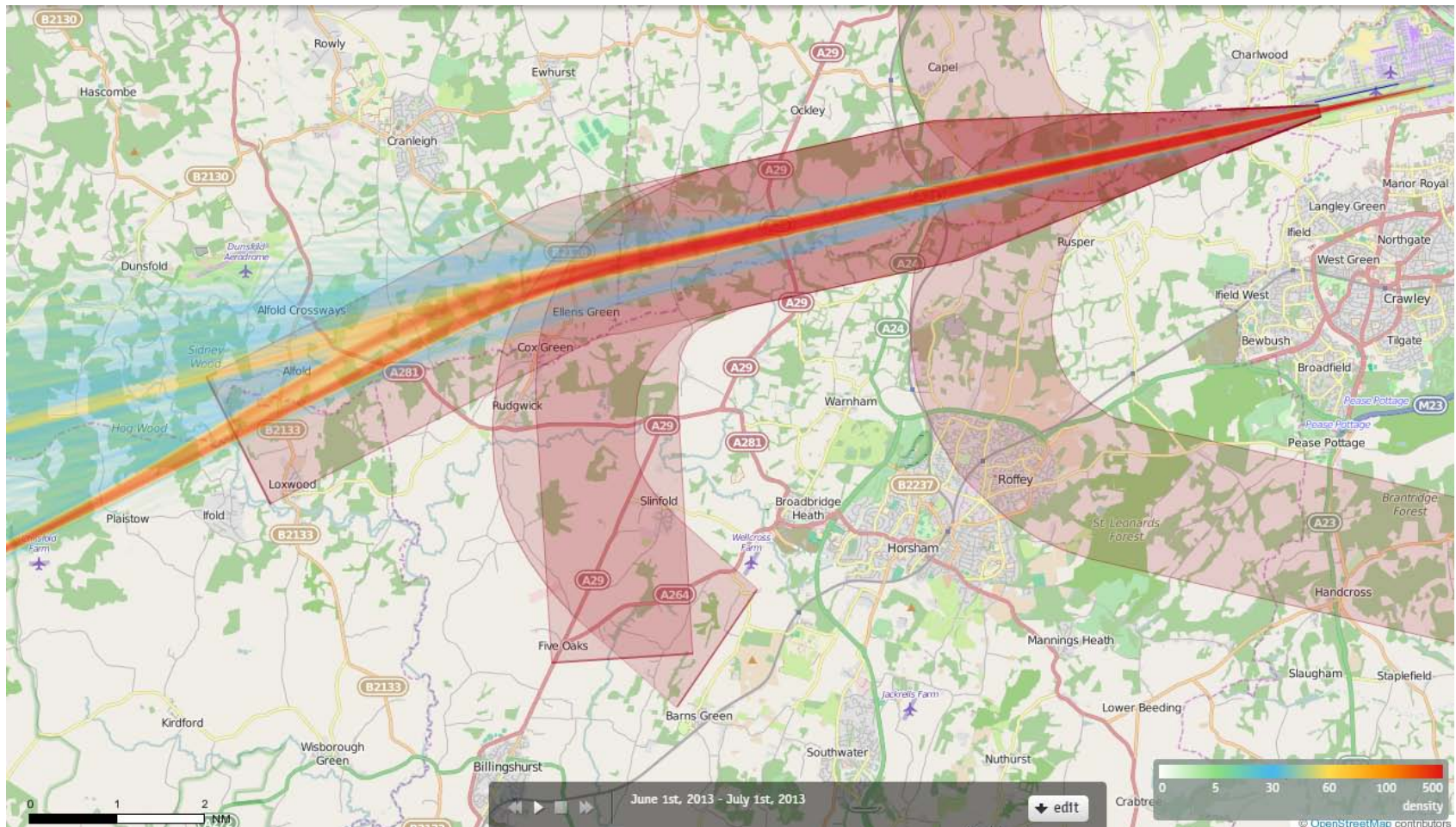
Each track is drawn as a line which has a width of just a few pixels and each pixel on the screen counts how often a 'track line' comes across this pixel when drawing all the tracks.

When all the tracks have been drawn, each pixel decides upon its colour based on the number of times a 'track line' has come across that pixel. The conversion from "count" to "colour" is guided by the numbers and colours given in the current Palette.

Counts in between are mapped to colours in between. If 100 were orange and 200 were red, then 150 would be coloured some orangy red.

26SOUTHAMPTON Density June 2013

1792 Aircraft – Showing CONVENTIONAL Departures Only



Track density

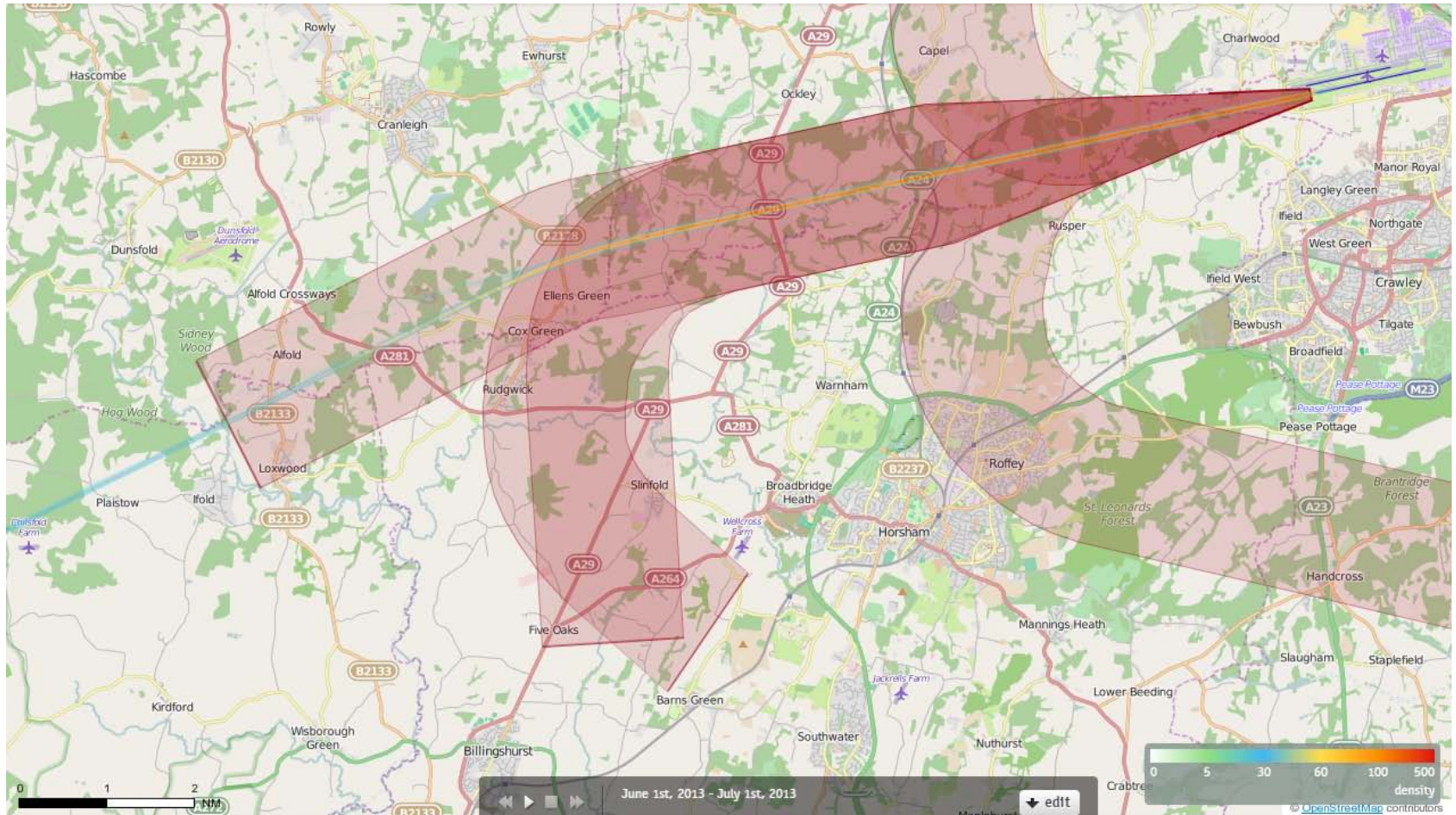
Each track is drawn as a line which has a width of just a few pixels and each pixel on the screen counts how often a 'track line' comes across this pixel when drawing all the tracks.

When all the tracks have been drawn, each pixel decides upon its colour based on the number of times a 'track line' has come across that pixel. The conversion from "count" to "colour" is guided by the numbers and colours given in the current Palette.

Counts in between are mapped to colours in between. If 100 were orange and 200 were red, then 150 would be coloured some orangy red.

26SOUTHAMPTON Density June 2013

121 Aircraft – Showing P-RNAV Departures Only



Track density

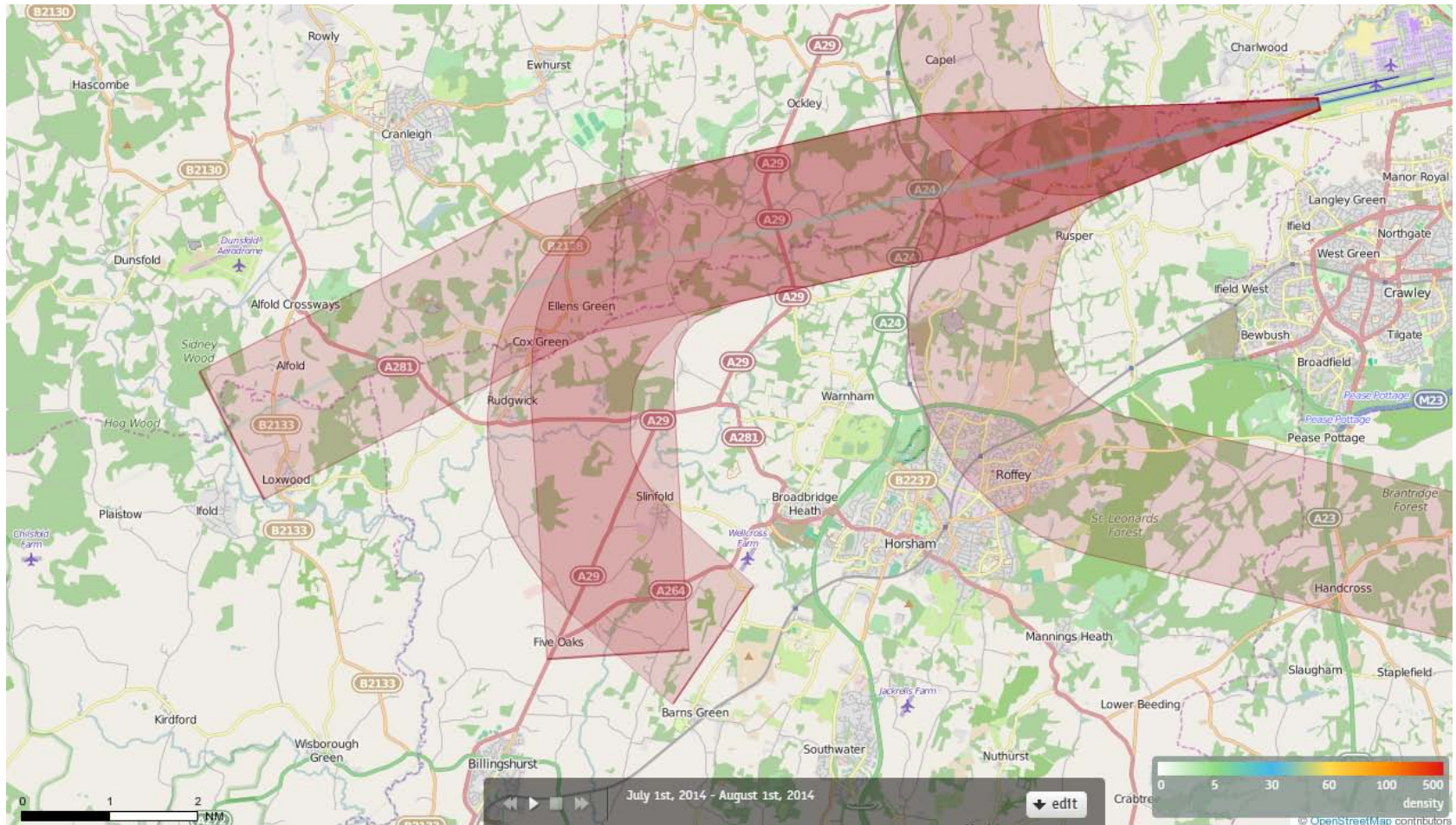
Each track is drawn as a line which has a width of just a few pixels and each pixel on the screen counts how often a 'track line' comes across this pixel when drawing all the tracks.

When all the tracks have been drawn, each pixel decides upon its colour based on the number of times a 'track line' has come across that pixel. The conversion from "count" to "colour" is guided by the numbers and colours given in the current Palette.

Counts in between are mapped to colours in between. If 100 were orange and 200 were red, then 150 would be coloured some orangy red.

26SOUTHAMPTON Density July 2014

32 Aircraft – Showing CONVENTIONAL Departures Only



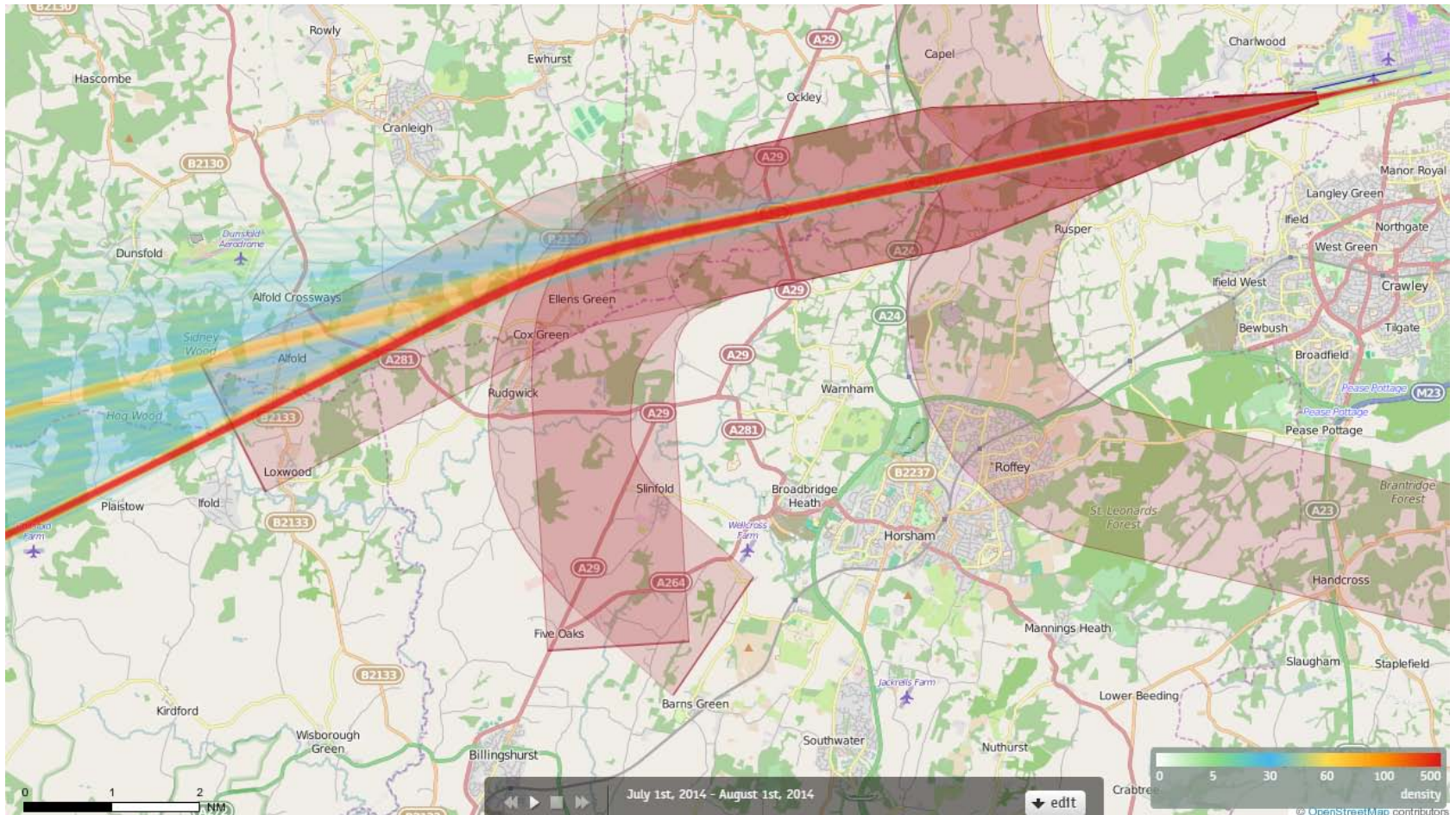
Track density

Each track is drawn as a line which has a width of just a few pixels and each pixel on the screen counts how often a 'track line' comes across this pixel when drawing all the tracks.

When all the tracks have been drawn, each pixel decides upon its colour based on the number of times a 'track line' has come across that pixel. The conversion from "count" to "colour" is guided by the numbers and colours given in the current Palette.

Counts in between are mapped to colours in between. If 100 were orange and 200 were red, then 150 would be coloured some orangy red.

26SOUTHAMPTON Density July 2014 2257 Aircraft – Showing P-RNAV Departures Only



Track density

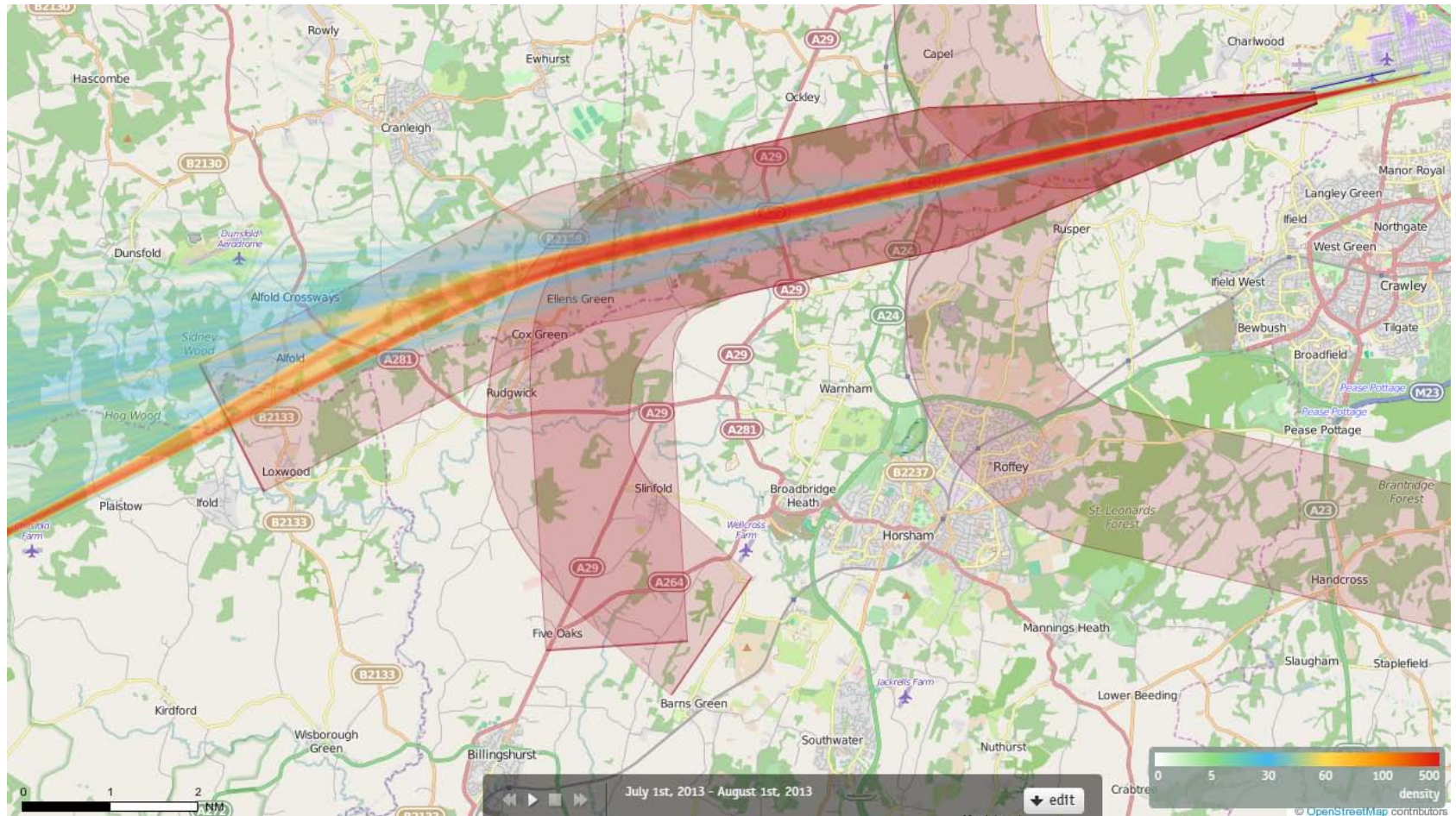
Each track is drawn as a line which has a width of just a few pixels and each pixel on the screen counts how often a 'track line' comes across this pixel when drawing all the tracks.

When all the tracks have been drawn, each pixel decides upon its colour based on the number of times a 'track line' has come across that pixel. The conversion from "count" to "colour" is guided by the numbers and colours given in the current Palette.

Counts in between are mapped to colours in between. If 100 were orange and 200 were red, then 150 would be coloured some orangy red.

26SOUTHAMPTON Density July 2013

1550 Aircraft – Showing CONVENTIONAL Departures Only



Track density

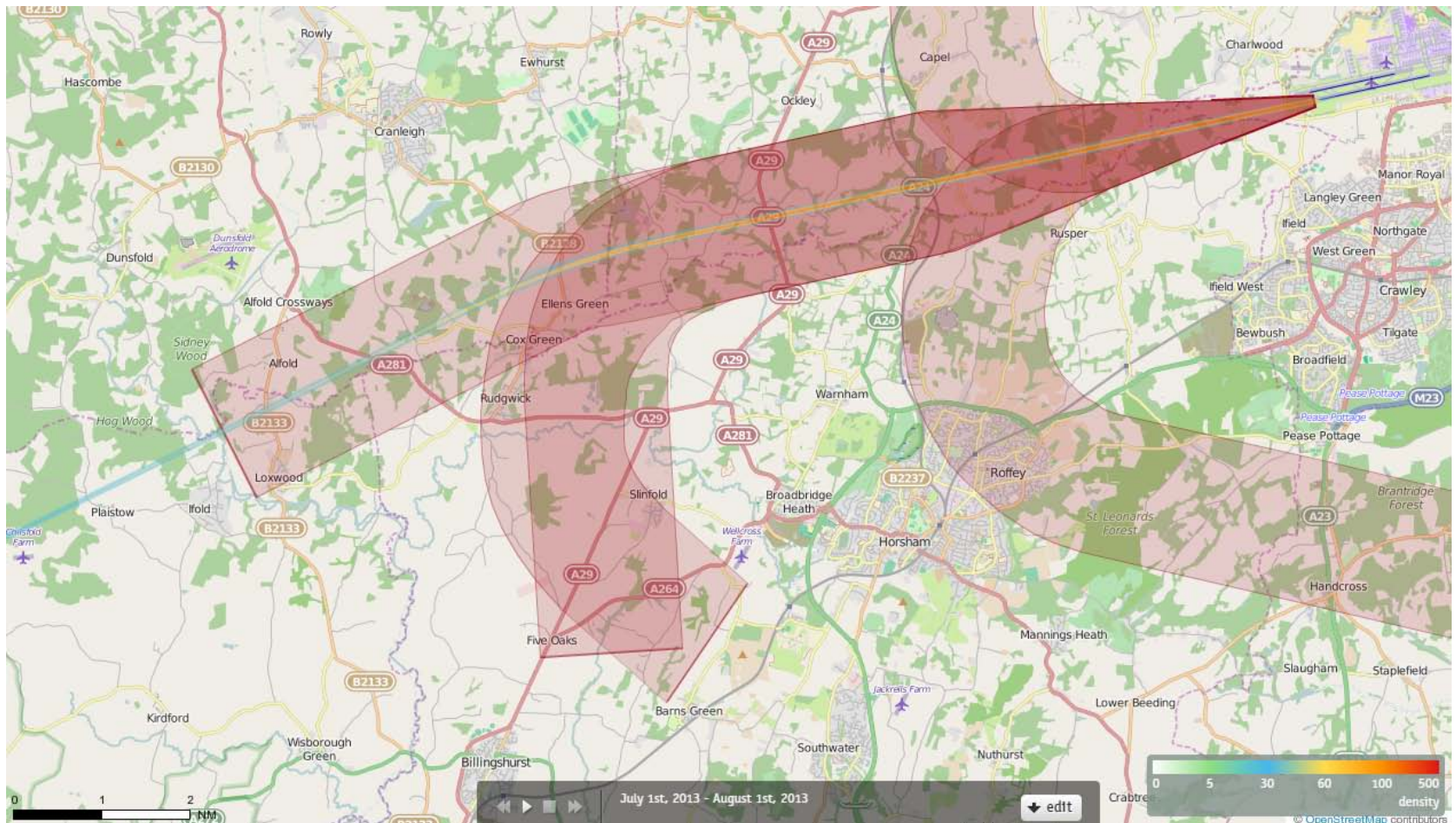
Each track is drawn as a line which has a width of just a few pixels and each pixel on the screen counts how often a 'track line' comes across this pixel when drawing all the tracks.

When all the tracks have been drawn, each pixel decides upon its colour based on the number of times a 'track line' has come across that pixel. The conversion from "count" to "colour" is guided by the numbers and colours given in the current Palette.

Counts in between are mapped to colours in between. If 100 were orange and 200 where red, then 150 would be coloured some orangy red.

26SOUTHAMPTON Density July 2013

118 Aircraft – Showing P-RNAV Departures Only



Track density

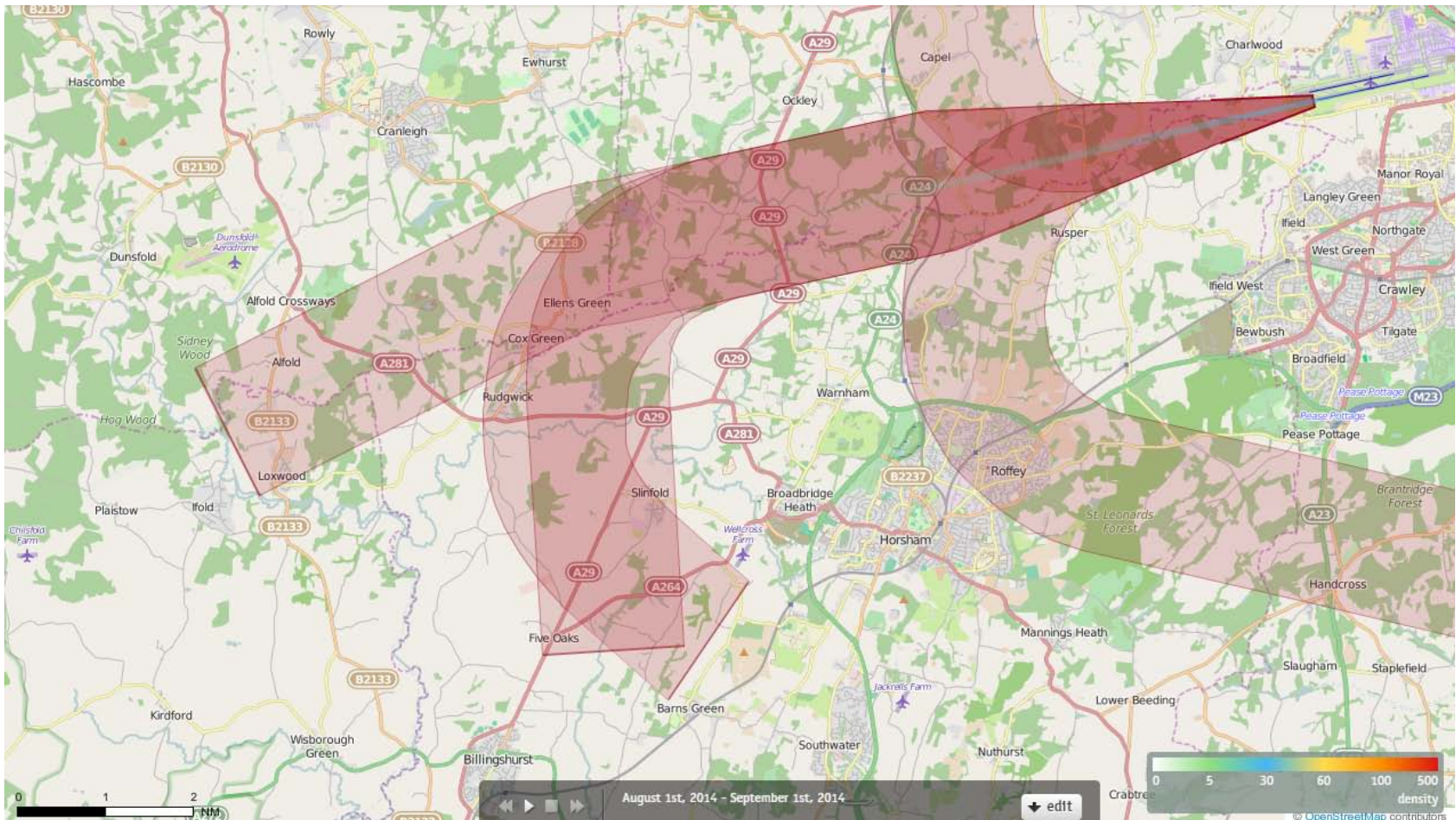
Each track is drawn as a line which has a width of just a few pixels and each pixel on the screen counts how often a 'track line' comes across this pixel when drawing all the tracks.

When all the tracks have been drawn, each pixel decides upon its colour based on the number of times a 'track line' has come across that pixel. The conversion from "count" to "colour" is guided by the numbers and colours given in the current Palette.

Counts in between are mapped to colours in between. If 100 were orange and 200 were red, then 150 would be coloured some orangy red.

26SOUTHAMPTON Density August 2014

37 Aircraft – Showing CONVENTIONAL Departures Only



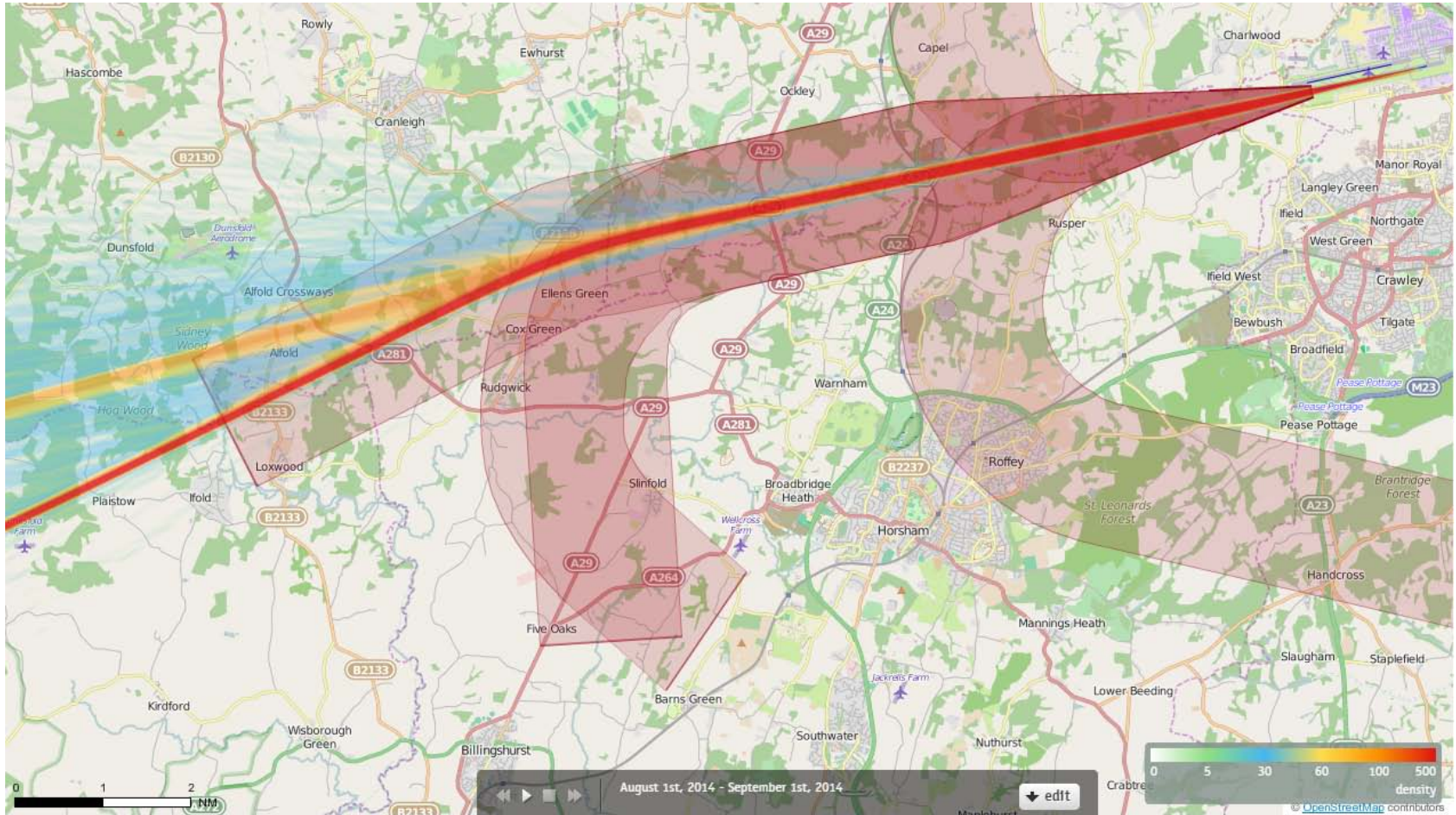
Track density

Each track is drawn as a line which has a width of just a few pixels and each pixel on the screen counts how often a 'track line' comes across this pixel when drawing all the tracks.

When all the tracks have been drawn, each pixel decides upon its colour based on the number of times a 'track line' has come across that pixel. The conversion from "count" to "colour" is guided by the numbers and colours given in the current Palette.

Counts in between are mapped to colours in between. If 100 were orange and 200 were red, then 150 would be coloured some orangy red.

26SOUTHAMPTON Density August 2014 3006 Aircraft – Showing P-RNAV Departures Only



Track density

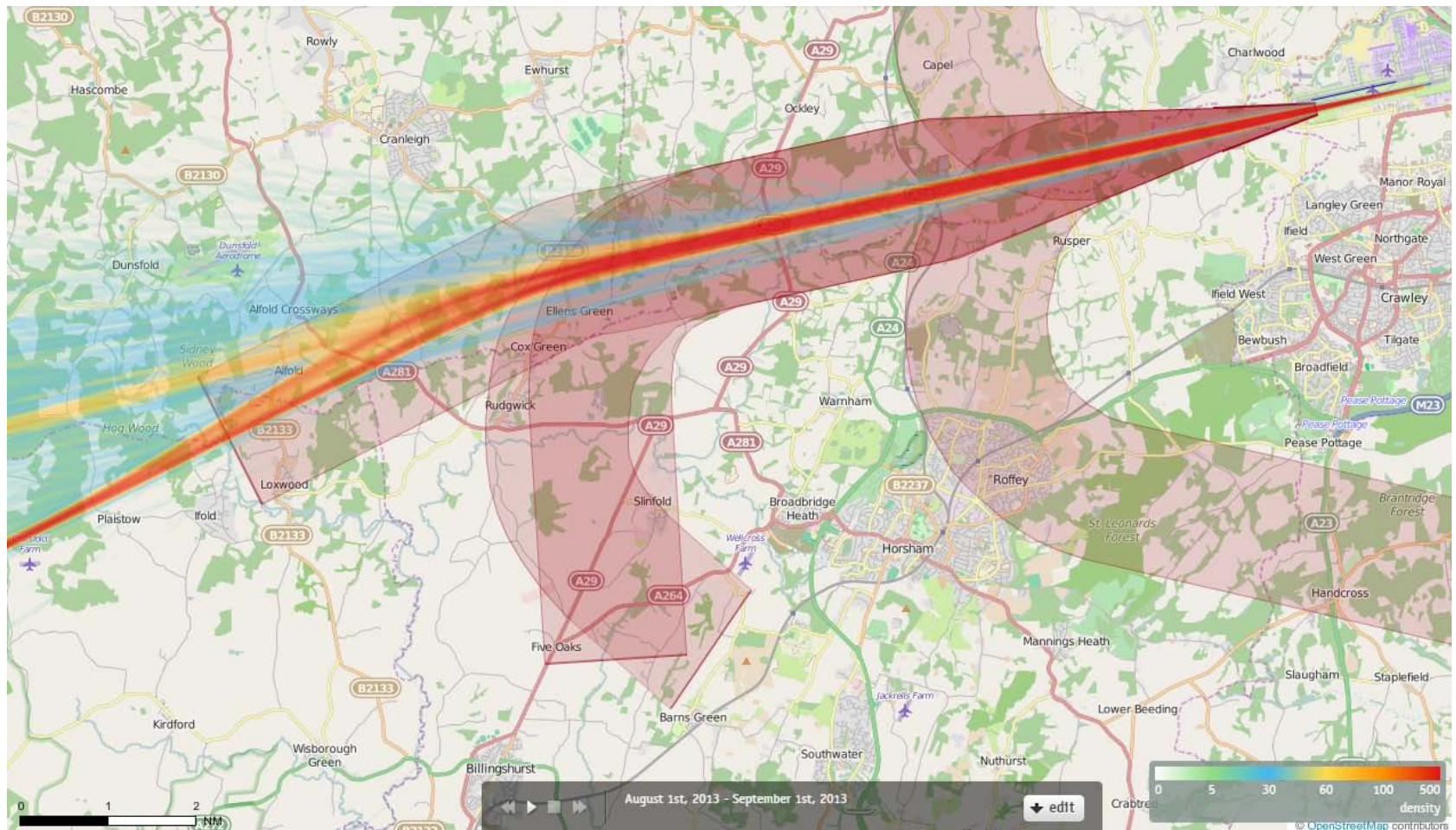
Each track is drawn as a line which has a width of just a few pixels and each pixel on the screen counts how often a 'track line' comes across this pixel when drawing all the tracks.

When all the tracks have been drawn, each pixel decides upon its colour based on the number of times a 'track line' has come across that pixel. The conversion from "count" to "colour" is guided by the numbers and colours given in the current Palette.

Counts in between are mapped to colours in between. If 100 were orange and 200 were red, then 150 would be coloured some orangy red.

26SOUTHAMPTON Density August 2013

2401 Aircraft – Showing CONVENTIONAL Departures Only



Track density

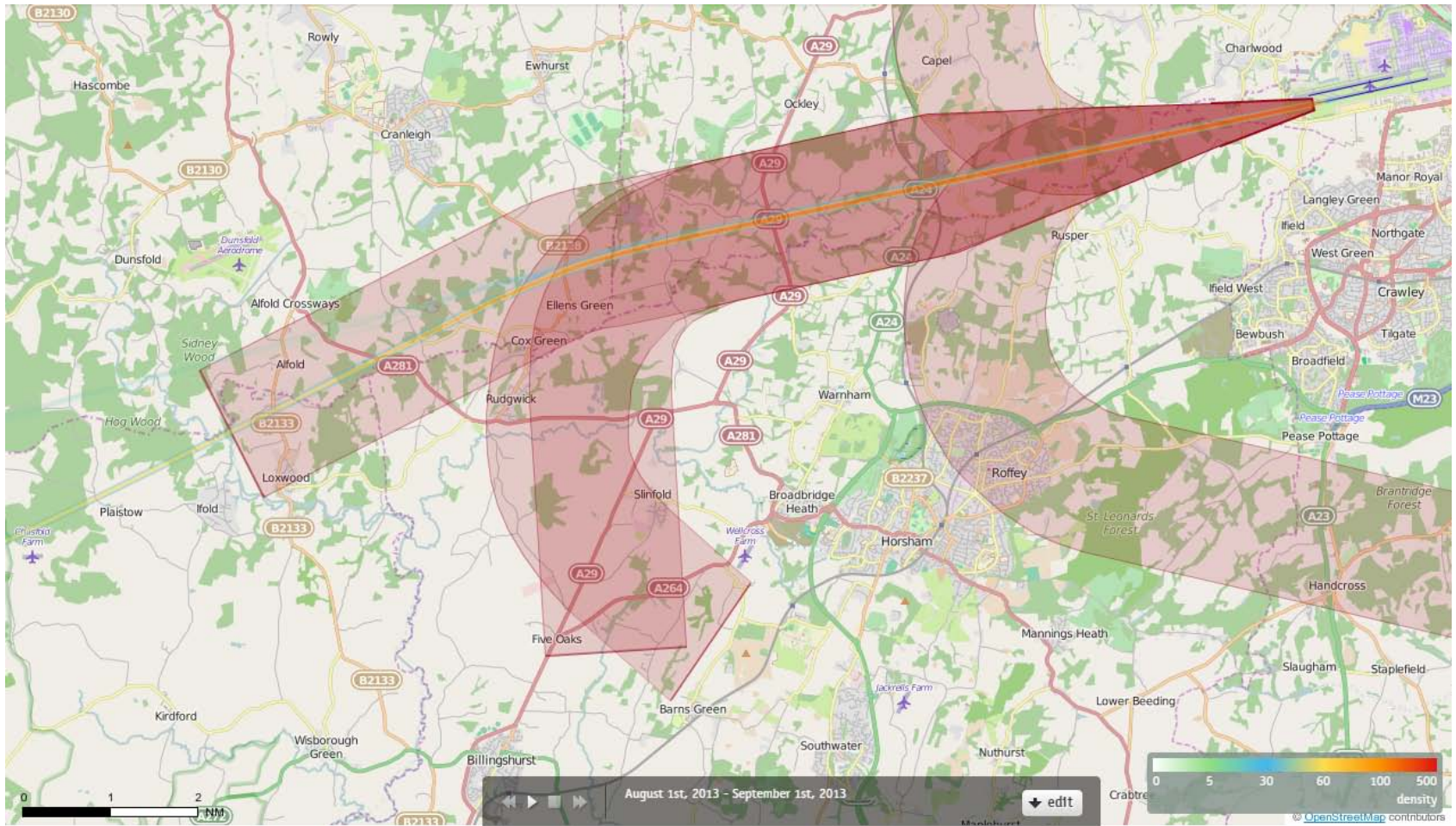
Each track is drawn as a line which has a width of just a few pixels and each pixel on the screen counts how often a 'track line' comes across this pixel when drawing all the tracks.

When all the tracks have been drawn, each pixel decides upon its colour based on the number of times a 'track line' has come across that pixel. The conversion from "count" to "colour" is guided by the numbers and colours given in the current Palette.

Counts in between are mapped to colours in between. If 100 were orange and 200 were red, then 150 would be coloured some orangy red.

26SOUTHAMPTON Density August 2013

185 Aircraft – Showing P-RNAV Departures Only



Track density

Each track is drawn as a line which has a width of just a few pixels and each pixel on the screen counts how often a 'track line' comes across this pixel when drawing all the tracks.

When all the tracks have been drawn, each pixel decides upon its colour based on the number of times a 'track line' has come across that pixel. The conversion from "count" to "colour" is guided by the numbers and colours given in the current Palette.

Counts in between are mapped to colours in between. If 100 were orange and 200 were red, then 150 would be coloured some orangy red.