

21 July 2015
EIR Reference: E0002390

Dear XXXX

I am writing in respect of your recent request, of 23 June 2015, for the release of information held by the Civil Aviation Authority (CAA).

You requested data regarding aircraft height levels on the eastern approach to Gatwick airport, specifically *For the "Gate" could I take a line from Cowden station to Penshurst station. Could we have a graph of absolute numbers as well as one as a % of planes through that gate in 2010, 11 and 14 and the totals at each height in 100 feet gradations from 2500 to 6000 Amsl?*

Please find enclosed a comparison of aircraft heights as requested. For this analysis, a gate was created running from Cowden station to Penshurst station and the altitudes (in feet above mean sea level) of all westerly arrival tracks that passed through the gate during the summer periods for 2010, 2011 and 2014 (covering 16 June to 15 September in each year) were calculated. The layout of the gate in relation to one day's worth of tracks is included for reference. The totals in each 100 ft height band are provided in both graphical and tabular format.

If you are not satisfied with how we have dealt with your request in the first instance you should approach the CAA in writing at:-

Caroline Chalk
Head of External Information Services
Civil Aviation Authority
Aviation House
Gatwick Airport South
Gatwick
RH6 0YR

caroline.chalk@caa.co.uk

The CAA has a formal internal review process for dealing with appeals or complaints in connection with requests under the Environmental Information Regulations. The key steps in this process are set in the attachment.

Civil Aviation Authority

Aviation House Gatwick Airport South Gatwick RH6 0YR www.caa.co.uk
Telephone 01293 768512 foi.requests@caa.co.uk

Should you remain dissatisfied with the outcome you have a right to appeal against the decision by contacting the Information Commissioner at:-

Information Commissioner's Office
FOI/EIR Complaints Resolution
Wycliffe House
Water Lane
Wilmslow
SK9 5AF
www.ico.gov.uk/complaints.aspx

If you wish to request further information from the CAA, please use the form on the CAA website at <http://www.caa.co.uk/application.aspx?catid=286&pagetype=65&appid=24>.

Yours sincerely

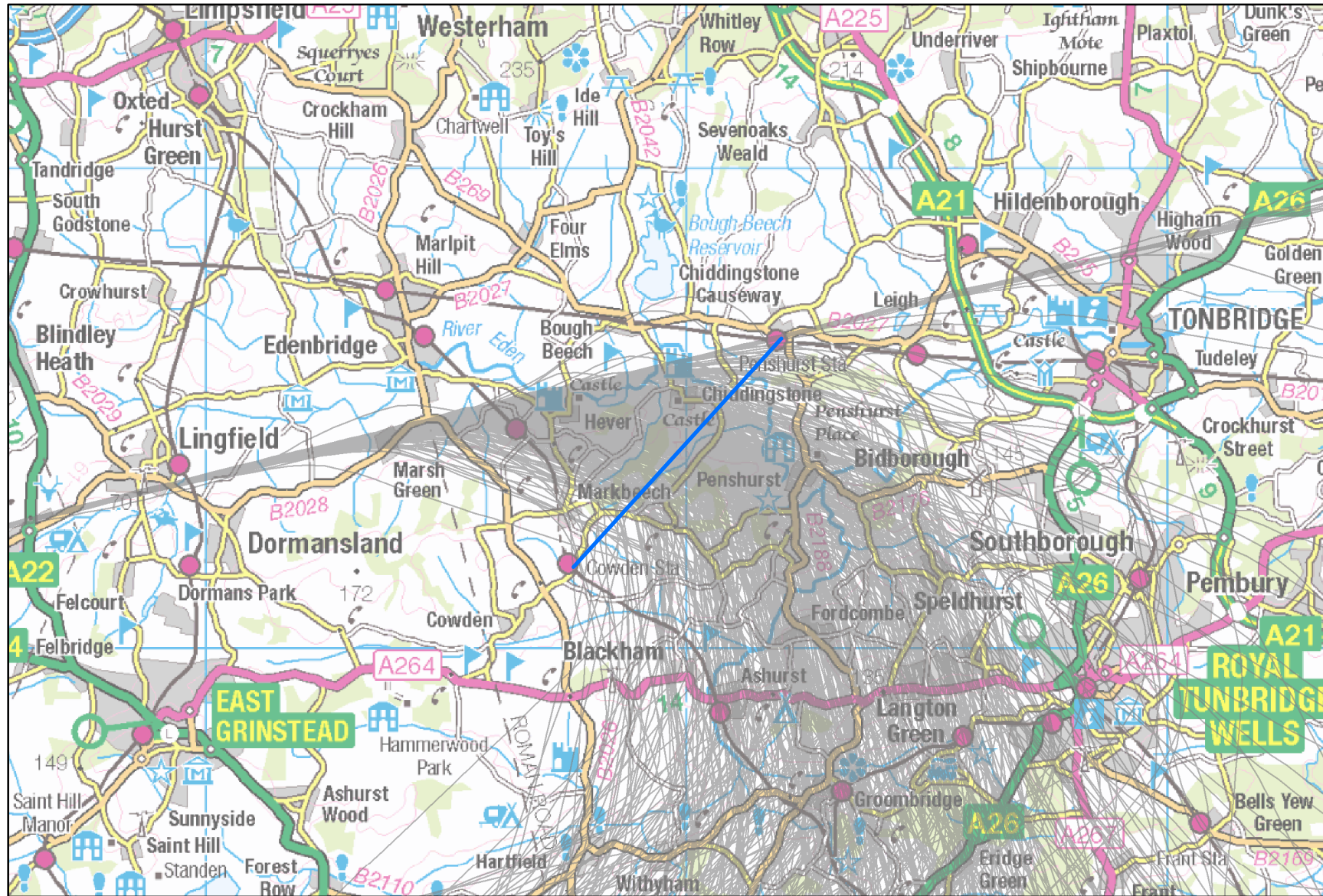
A handwritten signature in black ink, appearing to read 'M Stevens'.

Mark Stevens
External Response Manager

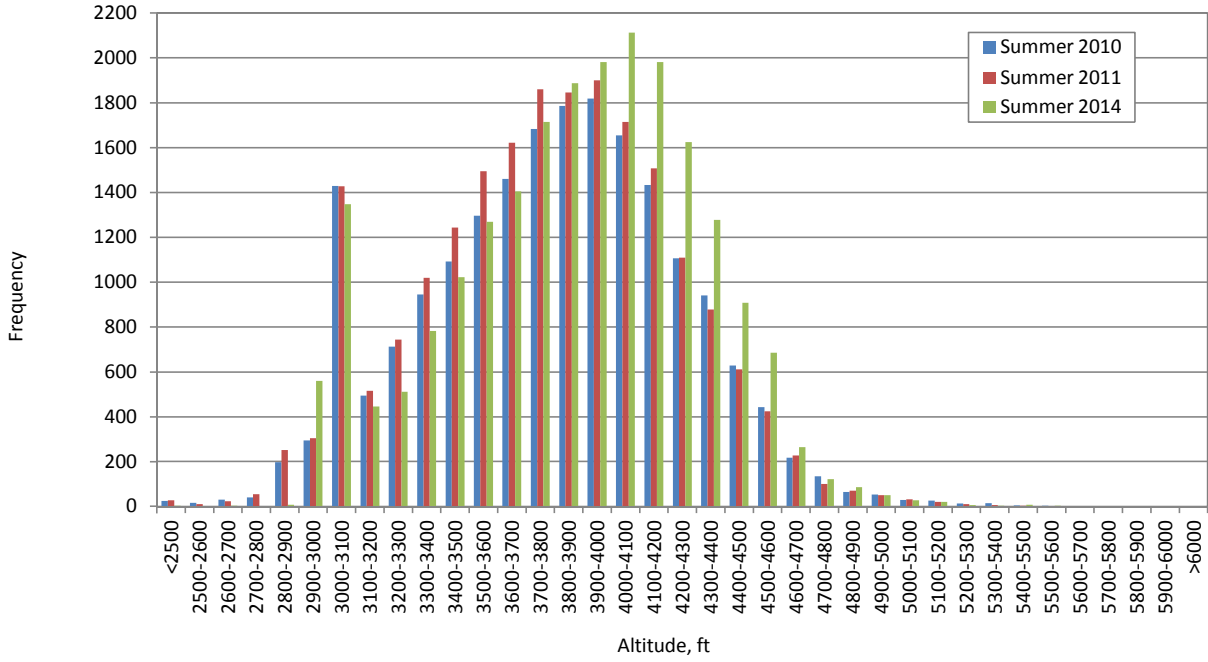
CAA INTERNAL REVIEW & COMPLAINTS PROCEDURE

- The original case to which the appeal or complaint relates is identified and the case file is made available;
- The appeal or complaint is allocated to an Appeal Manager, the appeal is acknowledged and the details of the Appeal Manager are provided to the applicant;
- The Appeal Manager reviews the case to understand the nature of the appeal or complaint, reviews the actions and decisions taken in connection with the original case and takes account of any new information that may have been received. This will typically require contact with those persons involved in the original case and consultation with the CAA Legal Department;
- The Appeal Manager concludes the review and, after consultation with those involved with the case, and with the CAA Legal Department, agrees on the course of action to be taken;
- The Appeal Manager prepares the necessary response and collates any information to be provided to the applicant;
- The response and any necessary information is sent to the applicant, together with information about further rights of appeal to the Information Commissioners Office, including full contact details.

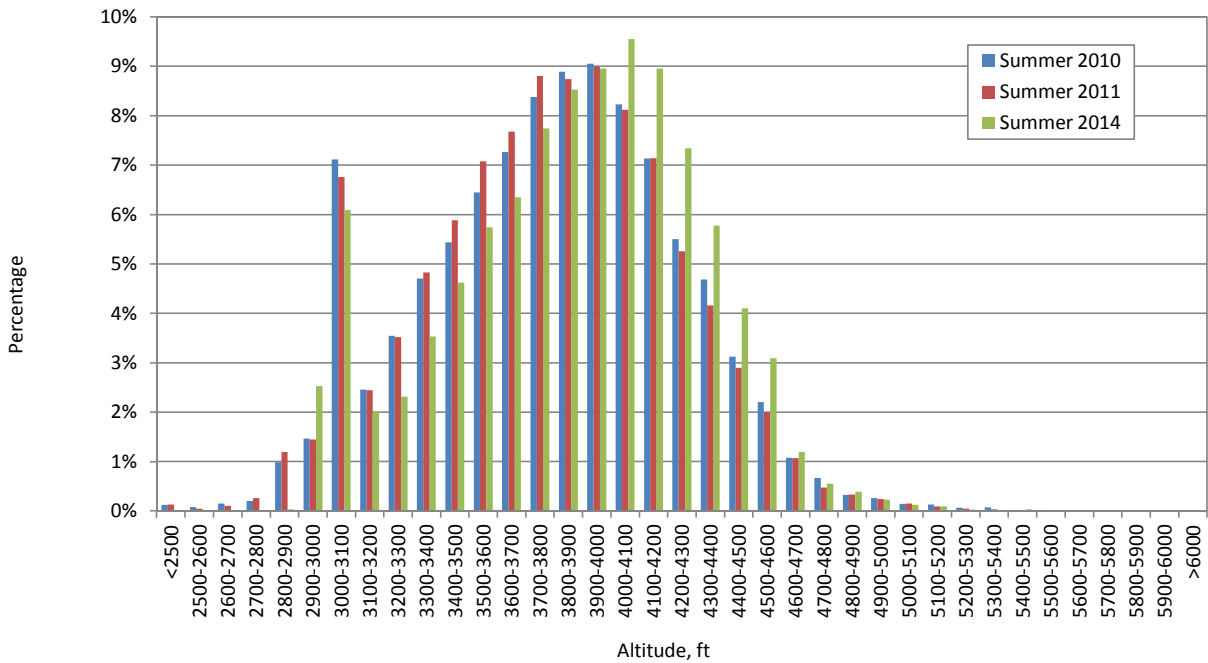
Location of Cowden-Penshurst gate
(relative to a sample of Gatwick westerly arrival tracks, 31 August 2014)



Distribution of altitudes of Gatwick westerly arrivals through Cowden-Penshurst gate



Distribution of altitudes of Gatwick westerly arrivals through Cowden-Penshurst gate



Distribution of altitudes of Gatwick westerly arrivals through Cowden-Penshurst gate

Altitude (ft)	Count		
	Summer 2010	Summer 2011	Summer 2014
<2500	25	28	3
2500-2600	16	10	1
2600-2700	30	23	3
2700-2800	41	55	2
2800-2900	198	252	8
2900-3000	295	305	560
3000-3100	1429	1428	1348
3100-3200	494	516	446
3200-3300	713	744	512
3300-3400	946	1020	782
3400-3500	1092	1243	1023
3500-3600	1296	1495	1270
3600-3700	1460	1622	1405
3700-3800	1683	1860	1714
3800-3900	1786	1846	1887
3900-4000	1819	1900	1981
4000-4100	1654	1715	2113
4100-4200	1433	1508	1981
4200-4300	1106	1110	1624
4300-4400	941	879	1278
4400-4500	628	612	908
4500-4600	443	424	685
4600-4700	217	227	265
4700-4800	135	101	122
4800-4900	65	71	86
4900-5000	53	51	51
5000-5100	29	32	28
5100-5200	26	20	20
5200-5300	13	10	7
5300-5400	15	7	3
5400-5500	5	3	8
5500-5600	4	2	3
5600-5700	2	0	0
5700-5800	0	2	0
5800-5900	1	1	1
5900-6000	1	1	0
>6000	1	0	1
Total count through gate (as % of all westerly arrivals)	20095 (70.5)	21123 (74.6)	22129 (91.5)