

# 26 LAMBOURNE

## Route 4

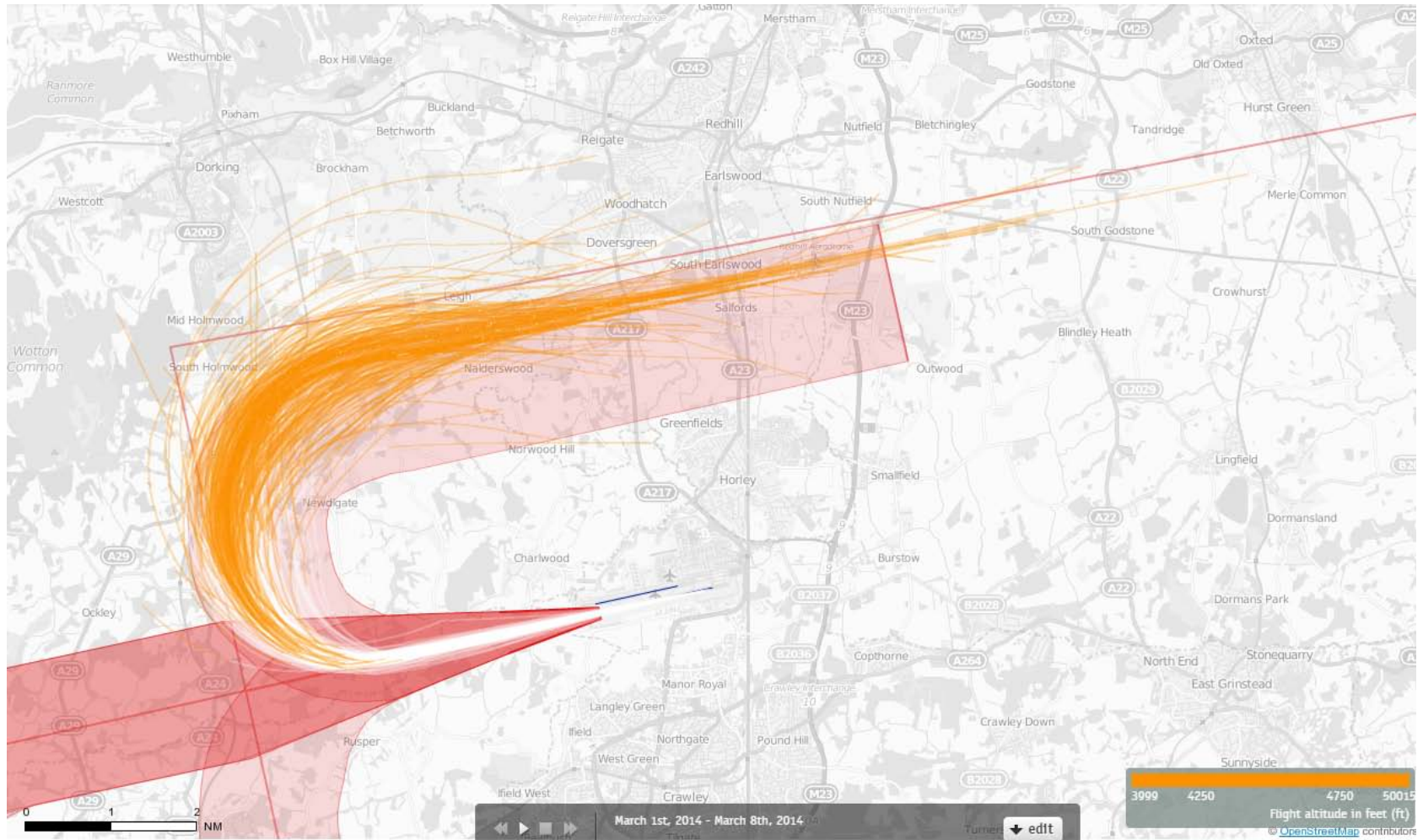
Altitude Bands

4000-5000ft

5000-6000ft

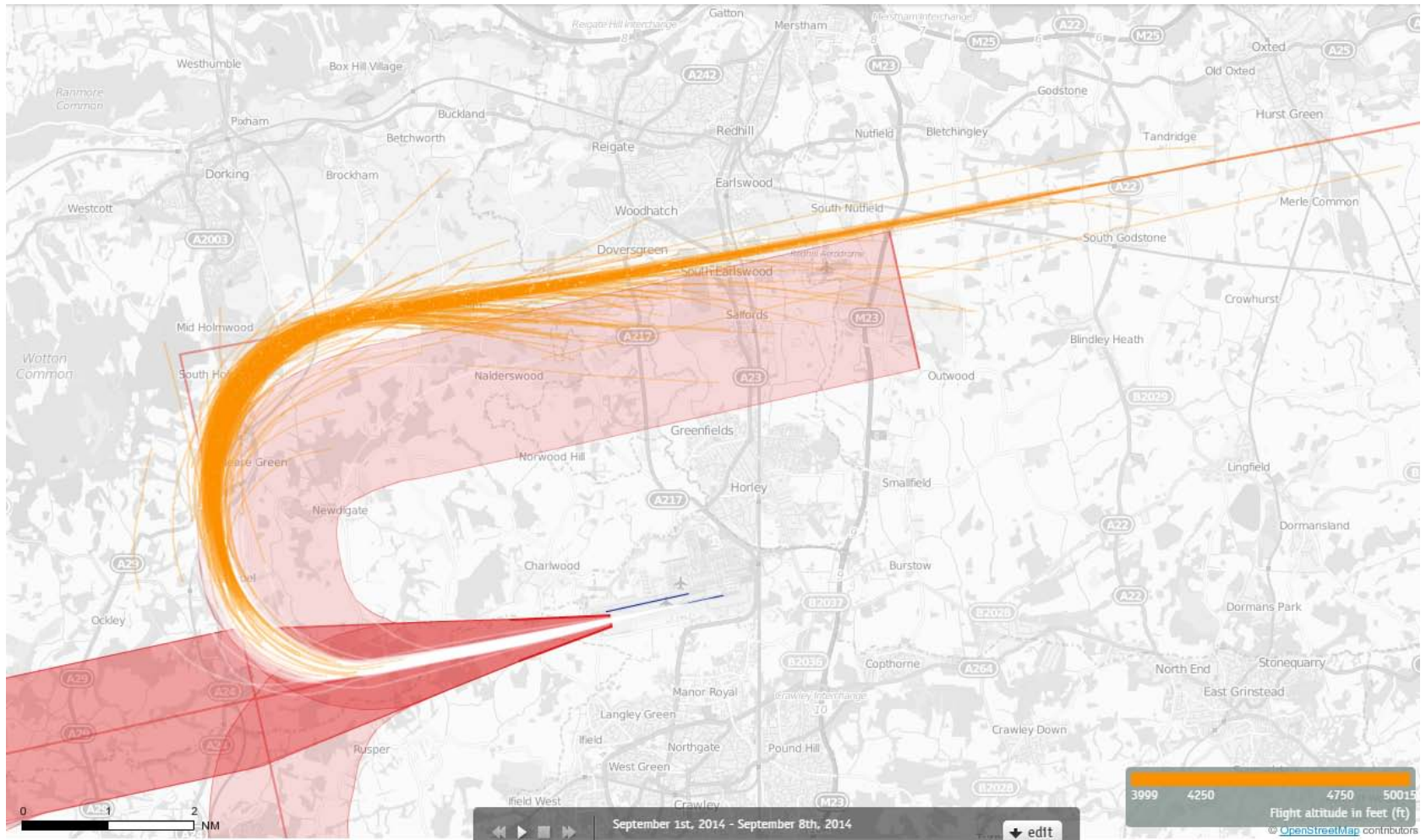
6000-7000ft

# 26 LAM Departures 1<sup>st</sup>-7<sup>th</sup> March 2014 4000-5000 feet (470 Aircraft – CONVENTIONAL ONLY)



Orange plots show the points at which an aircraft was between 4000 and 5000ft altitude.

# 26 LAM Departures 1<sup>st</sup> – 7<sup>th</sup> September 2014 4000-5000 feet (574 Aircraft – P-RNAV ONLY)



Orange plots show the points at which an aircraft was between 4000 and 5000ft altitude.

# 26 LAM Departures 1<sup>st</sup>-7<sup>th</sup> March 2014 4000-5000 feet (470 Aircraft – CONVENTIONAL ONLY)



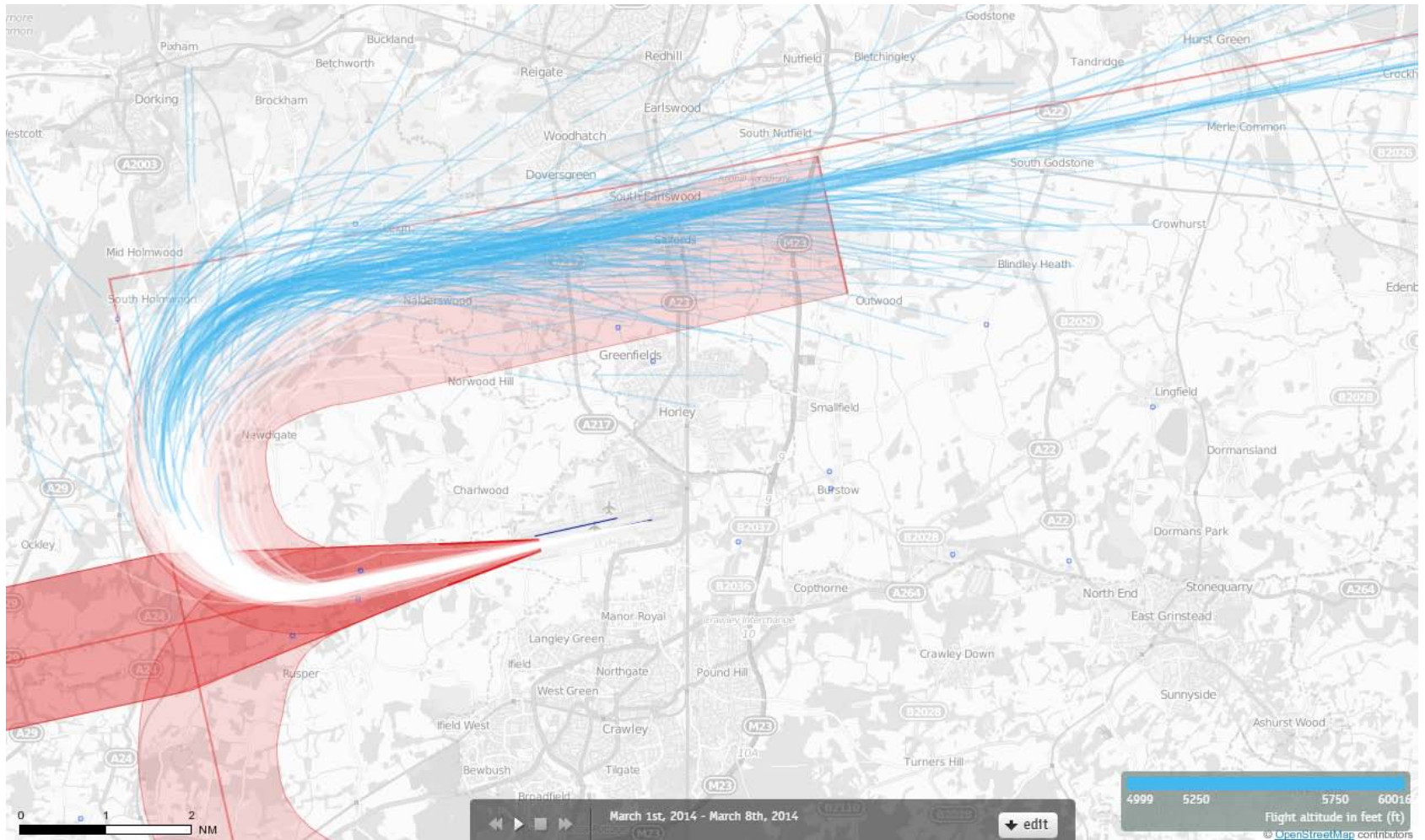
Orange plots show the points at which an aircraft was between 4000 and 5000ft altitude.

# 26 LAM Departures 1<sup>st</sup> – 7<sup>th</sup> September 2014 4000-5000 feet (574 Aircraft – P-RNAV ONLY)



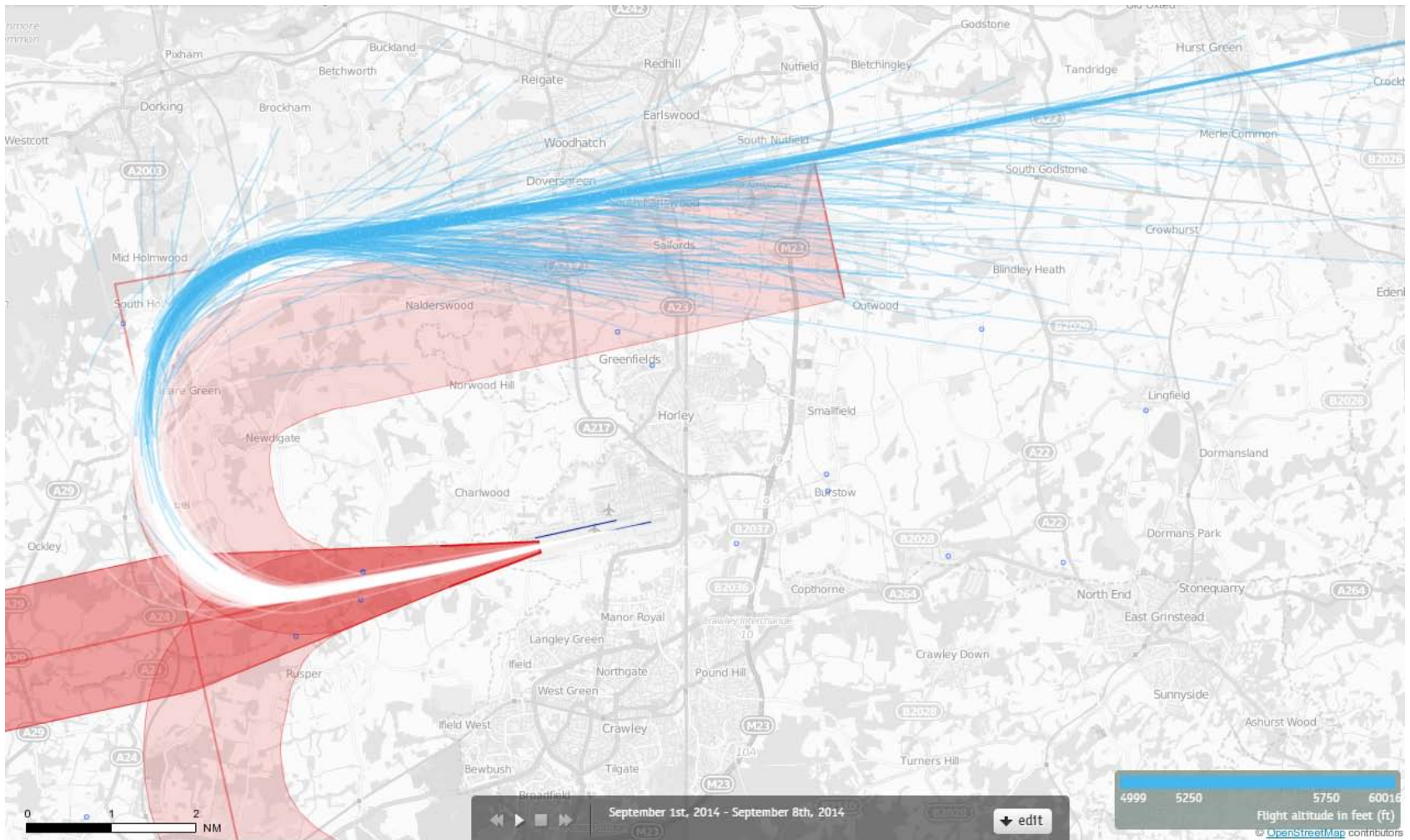
Orange plots show the points at which an aircraft was between 4000 and 5000ft altitude.

# 26 LAM Departures 1<sup>st</sup>-7<sup>th</sup> March 2014 5000-6000 feet (470 Aircraft – CONVENTIONAL ONLY)



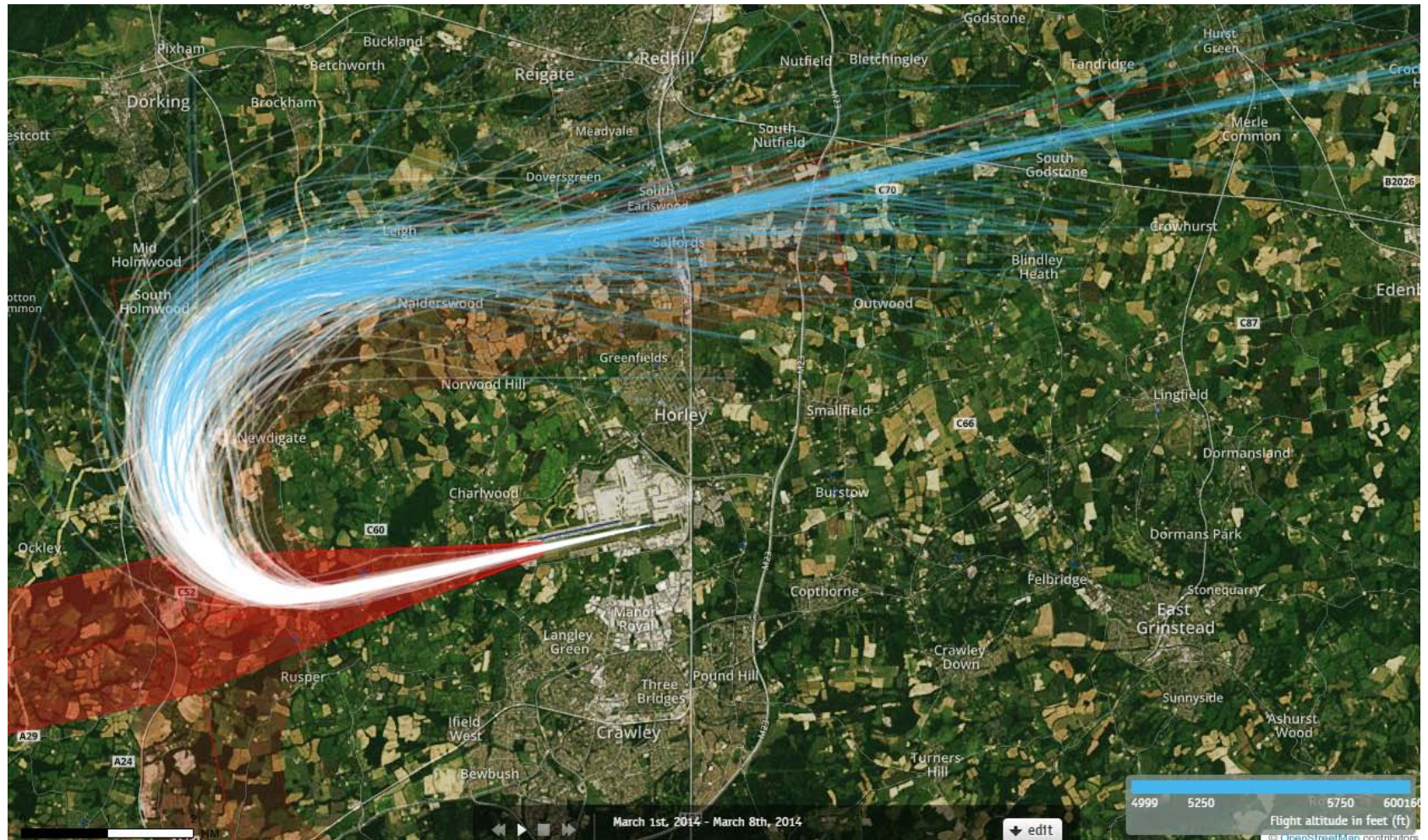
Blue plots show the points at which an aircraft was between 5000 and 6000ft altitude.

# 26 LAM Departures 1<sup>st</sup> – 7<sup>th</sup> September 2014 5000-6000 feet (574 Aircraft – P-RNAV ONLY)



Blue plots show the points at which an aircraft was between 5000 and 6000ft altitude.

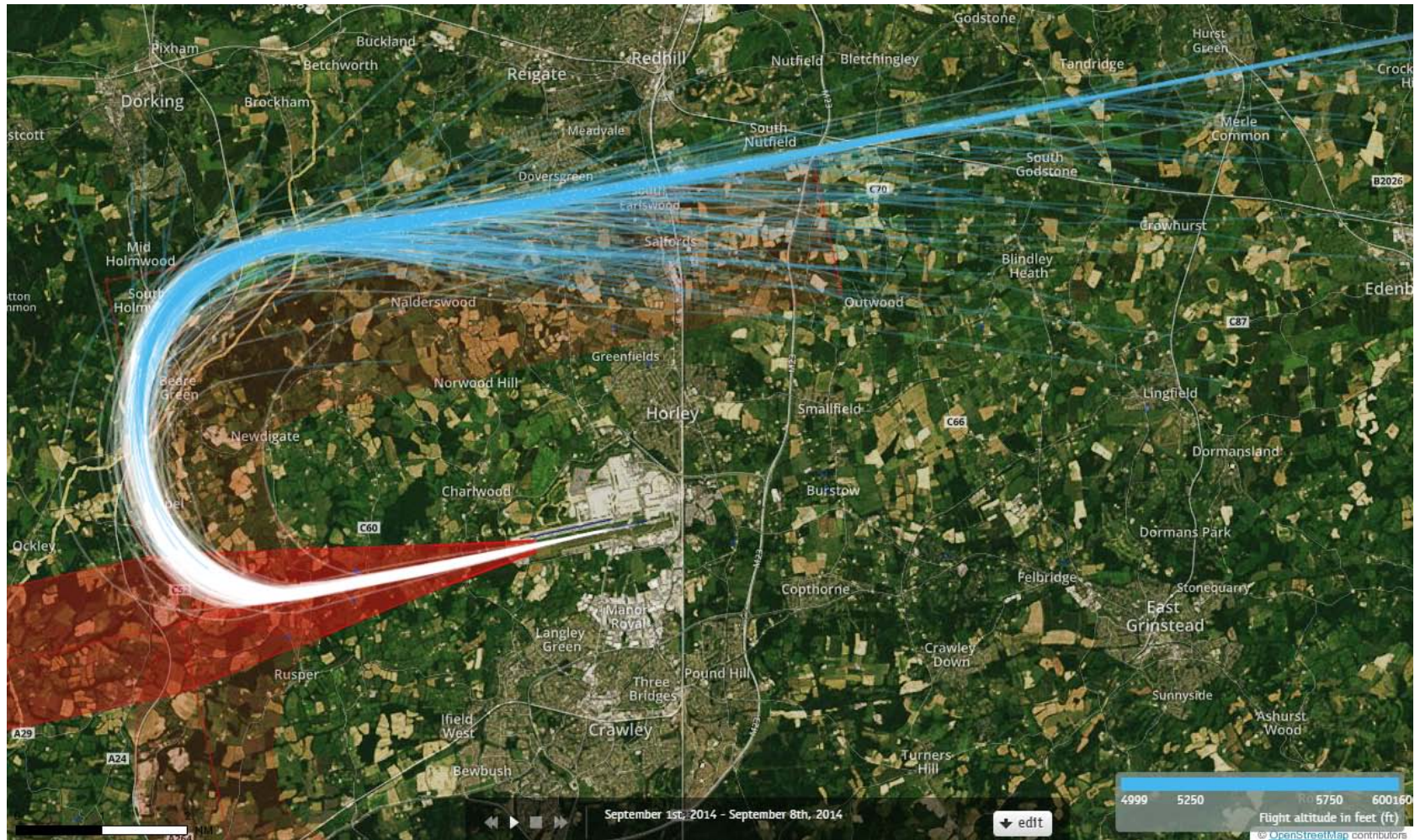
# 26 LAM Departures 1<sup>st</sup>-7<sup>th</sup> March 2014 5000-6000 feet (470 Aircraft – CONVENTIONAL ONLY)



Blue plots show the points at which an aircraft was between 5000 and 6000ft altitude.

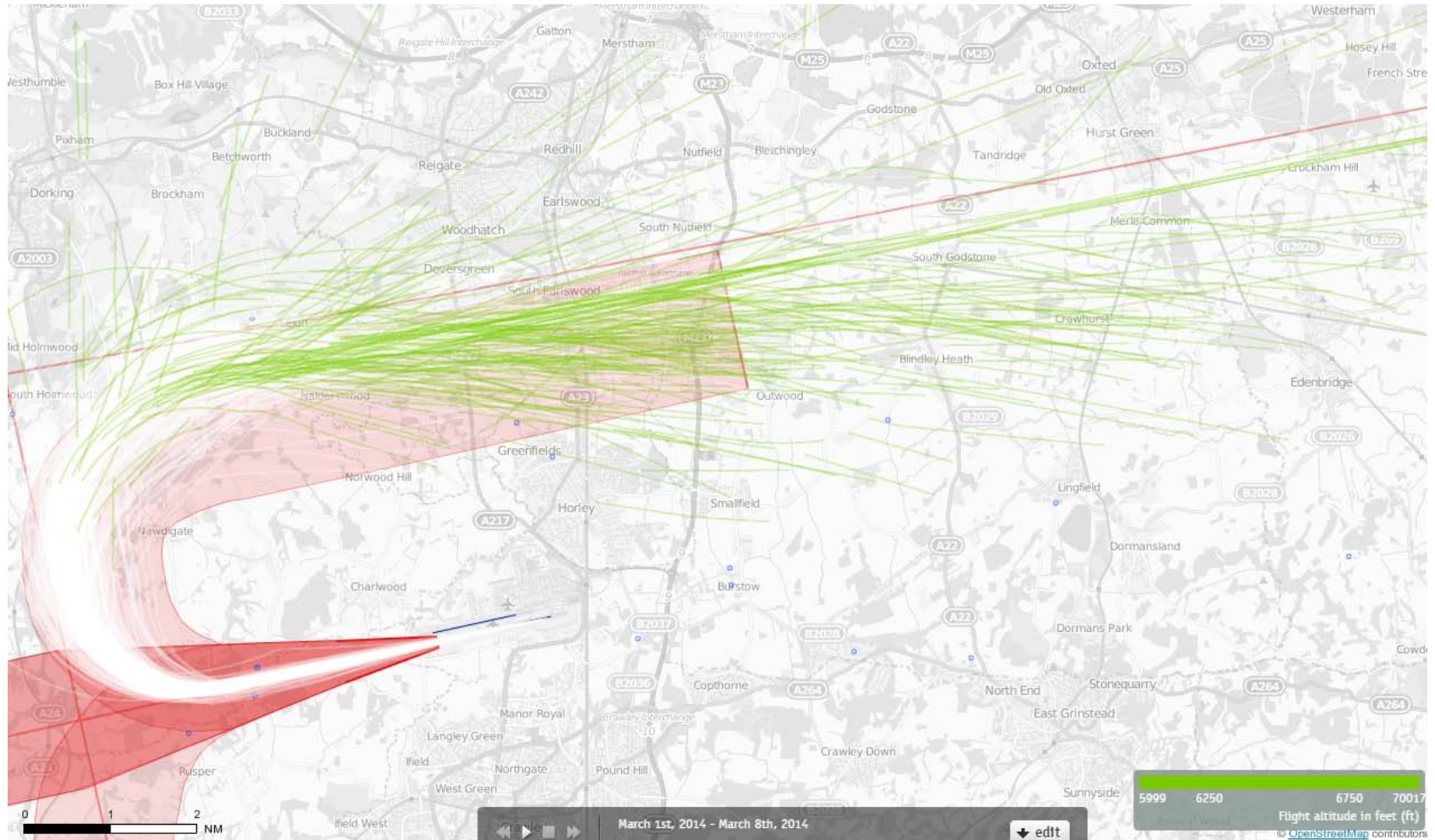


# 26 LAM Departures 1<sup>st</sup> – 7<sup>th</sup> September 2014 5000-6000 feet (574 Aircraft – P-RNAV ONLY)



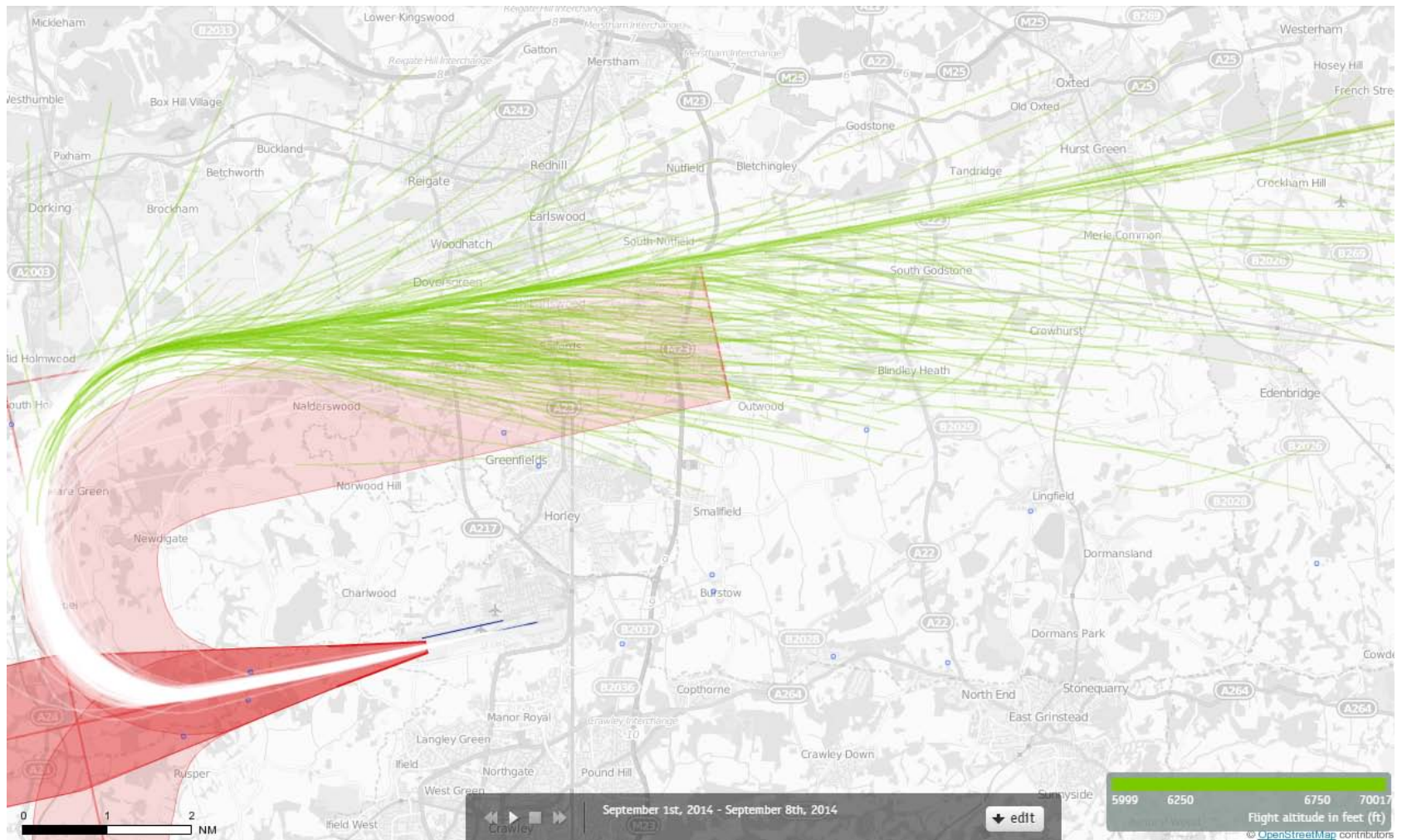
Blue plots show the points at which an aircraft was between 5000 and 6000ft altitude.

# 26 LAM Departures 1<sup>st</sup>-7<sup>th</sup> March 2014 6000-7000 feet (470 Aircraft – CONVENTIONAL ONLY)



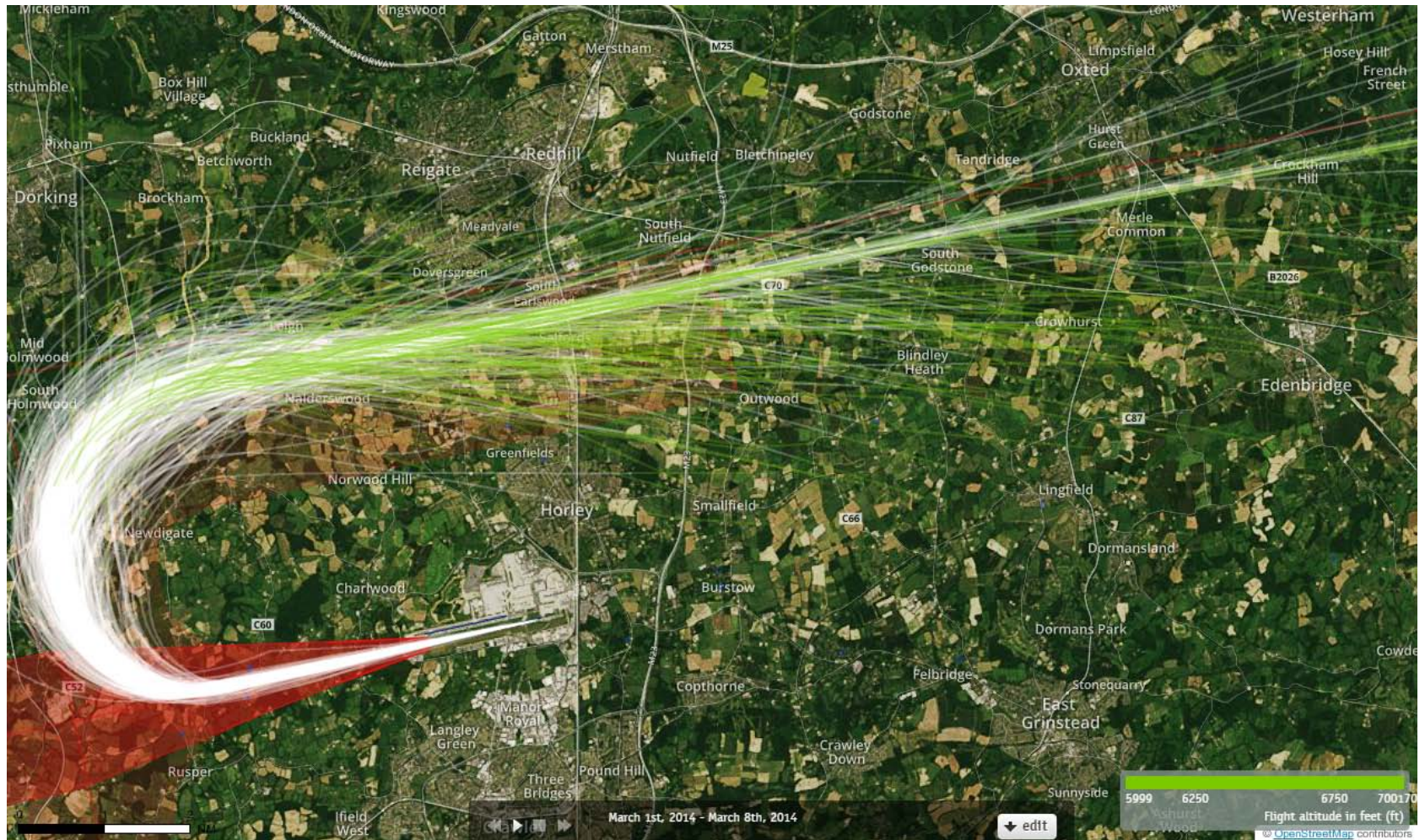
Green plots show the points at which an aircraft was between 6000 and 7000ft altitude.

# 26 LAM Departures 1<sup>st</sup> – 7<sup>th</sup> September 2014 6000-7000 feet (574 Aircraft – P-RNAV ONLY)



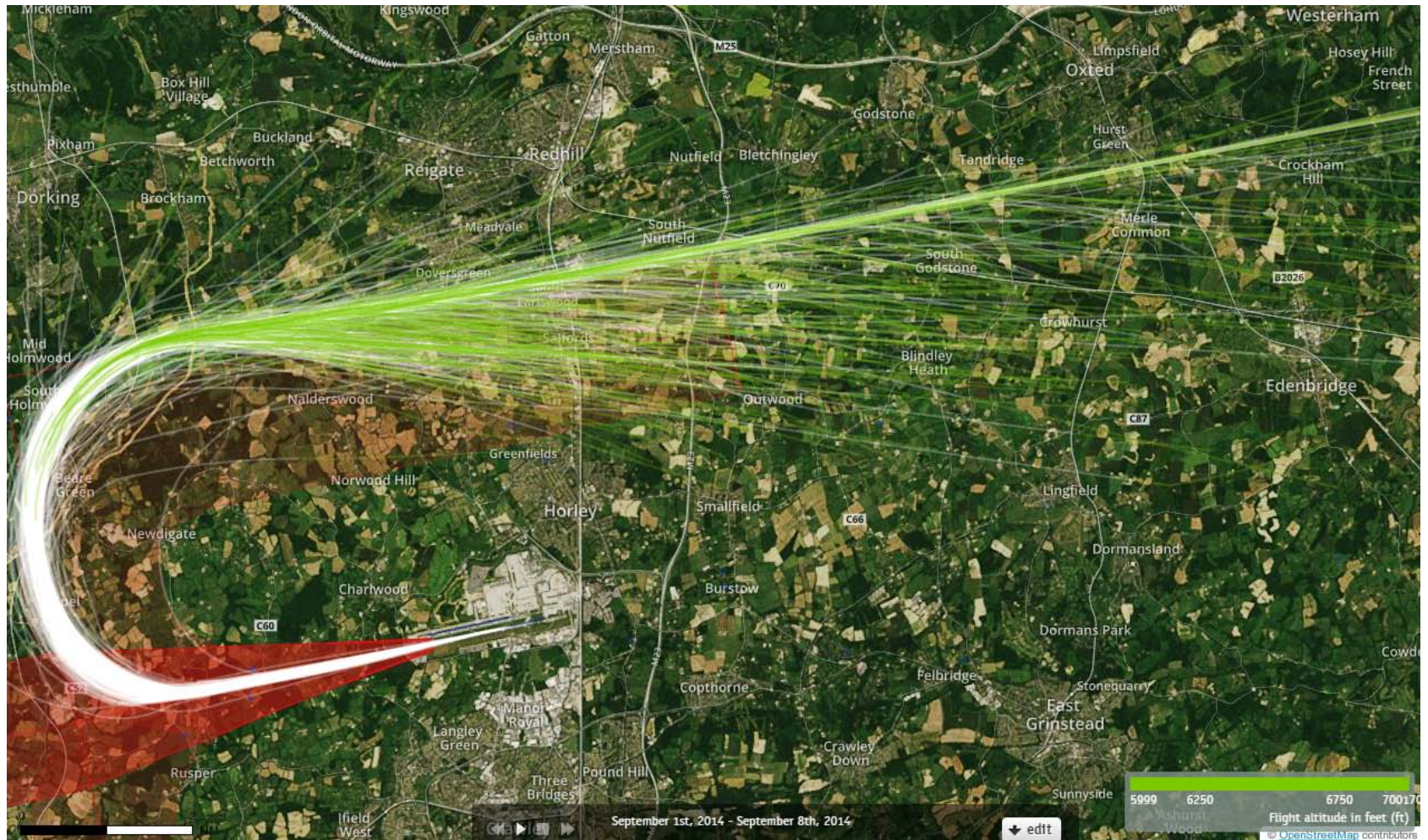
Green plots show the points at which an aircraft was between 6000 and 7000ft altitude.

# 26 LAM Departures 1<sup>st</sup>-7<sup>th</sup> March 2014 6000-7000 feet (470 Aircraft – CONVENTIONAL ONLY)



Green plots show the points at which an aircraft was between 6000 and 7000ft altitude.

# 26 LAM Departures 1<sup>st</sup> – 7<sup>th</sup> September 2014 6000-7000 feet (574 Aircraft – P-RNAV ONLY)



Green plots show the points at which an aircraft was between 6000 and 7000ft altitude.