

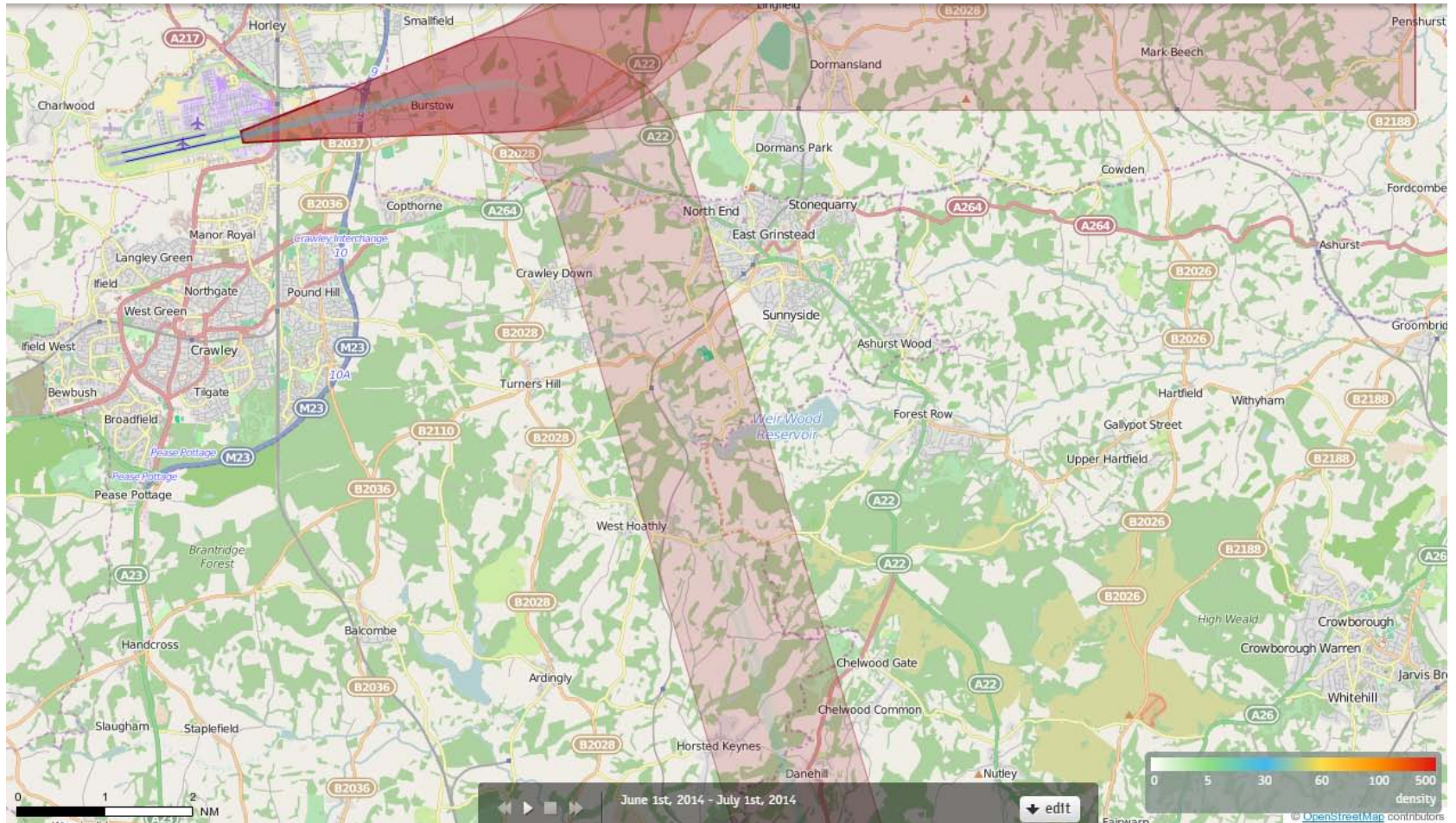
**08 SEAFORD**

**Route 2**

Pre and Post P-RNAV

# 08SEAFORD Density June 2014

## 88 Aircraft - Showing CONVENTIONAL Departures Only



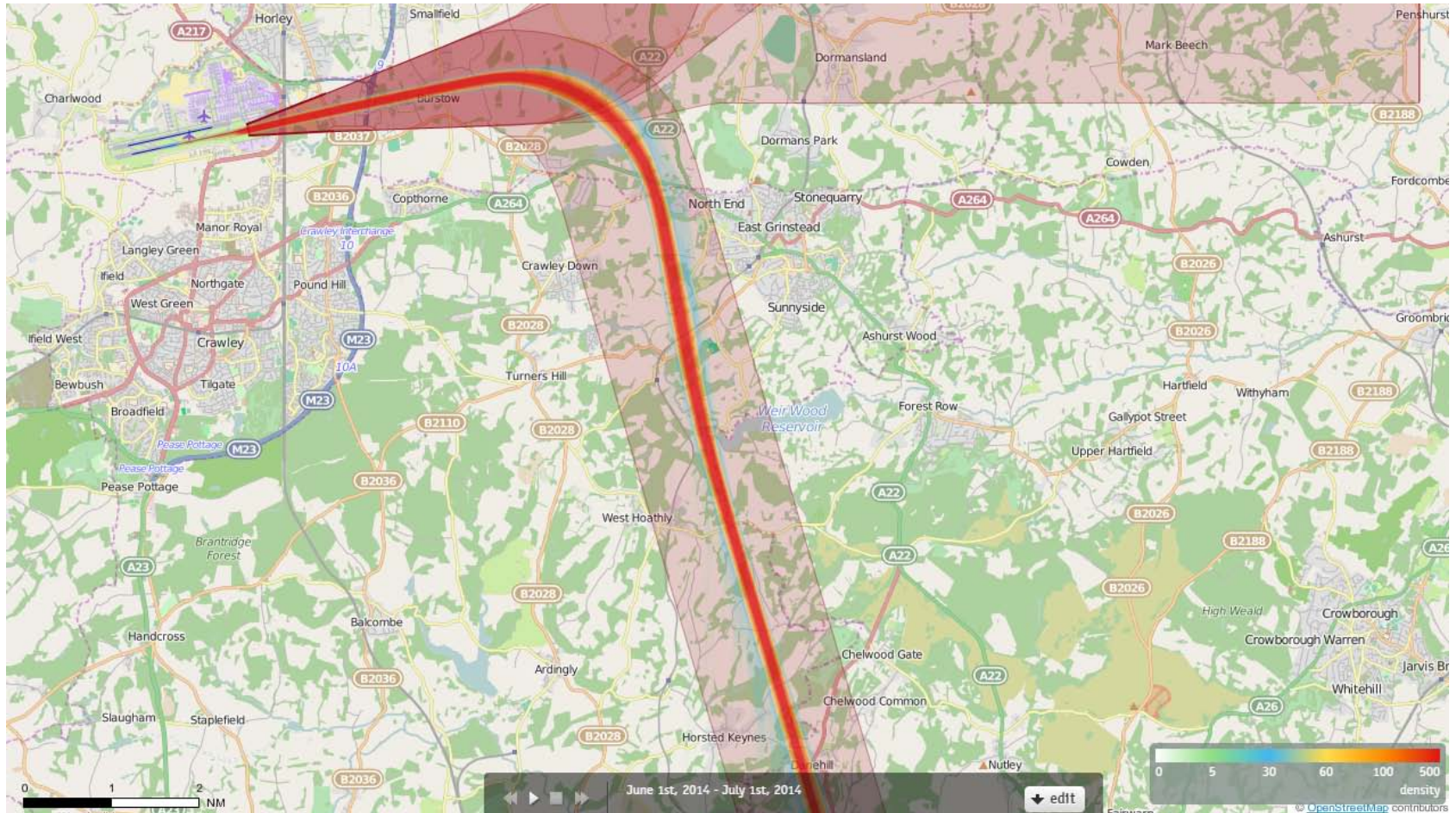
### Track density

Each track is drawn as a line which has a width of just a few pixels and each pixel on the screen counts how often a 'track line' comes across this pixel when drawing all the tracks.

When all the tracks have been drawn, each pixel decides upon its colour based on the number of times a 'track line' has come across that pixel. The conversion from "count" to "colour" is guided by the numbers and colours given in the current Palette.

Counts in between are mapped to colours in between. If 100 were orange and 200 were red, then 150 would be coloured some orangy red.

# 08SEAFORD Density June 2014 1642 Aircraft – Showing P-RNAV Departures Only



## Track density

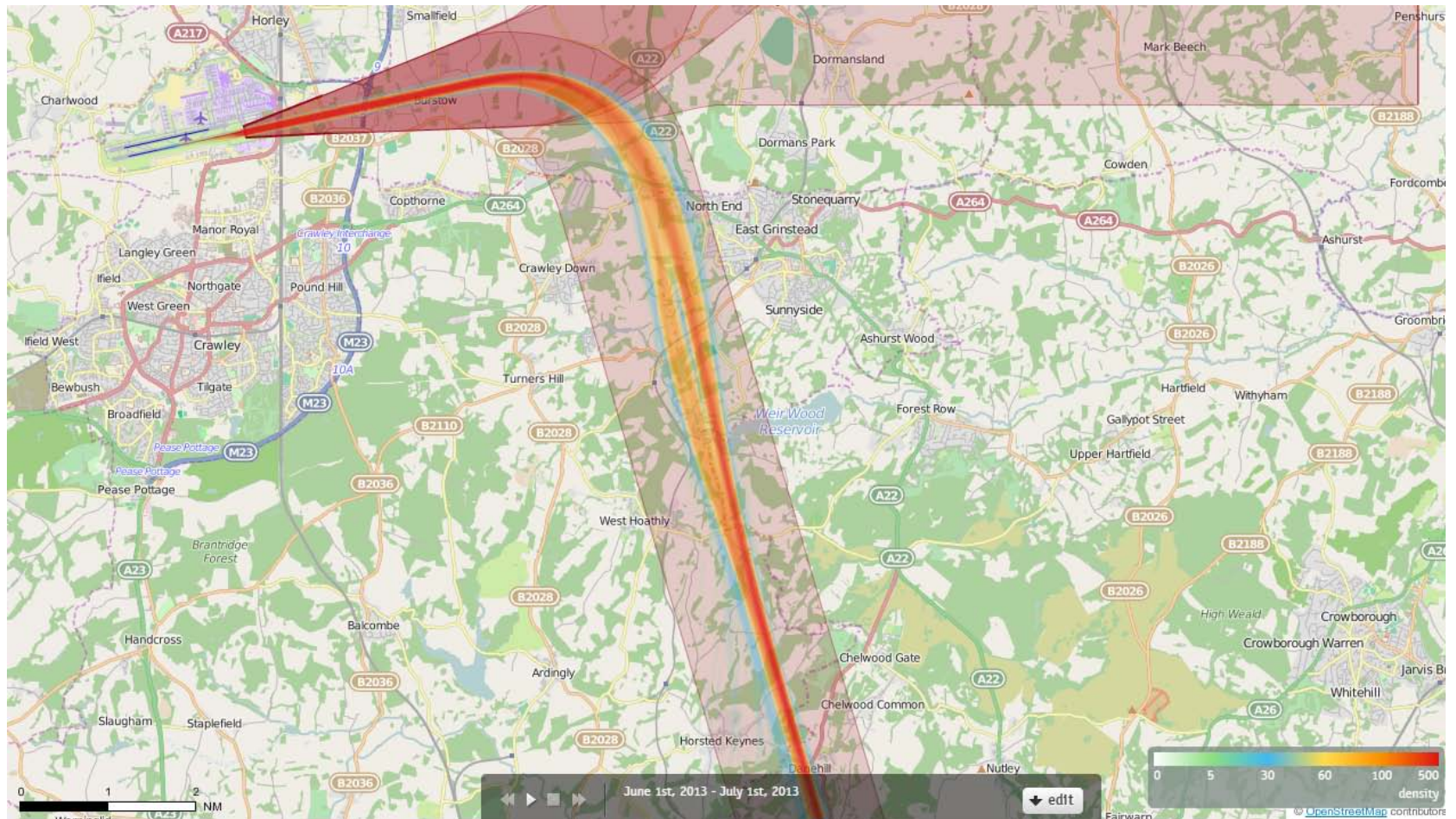
Each track is drawn as a line which has a width of just a few pixels and each pixel on the screen counts how often a 'track line' comes across this pixel when drawing all the tracks.

When all the tracks have been drawn, each pixel decides upon its colour based on the number of times a 'track line' has come across that pixel. The conversion from "count" to "colour" is guided by the numbers and colours given in the current Palette,

Counts in between are mapped to colours in between. If 100 were orange and 200 were red, then 150 would be coloured some orangy red.

# 08SEAFORD Density June 2013

## 1052 Aircraft – Showing CONVENTIONAL Departures Only



### Track density

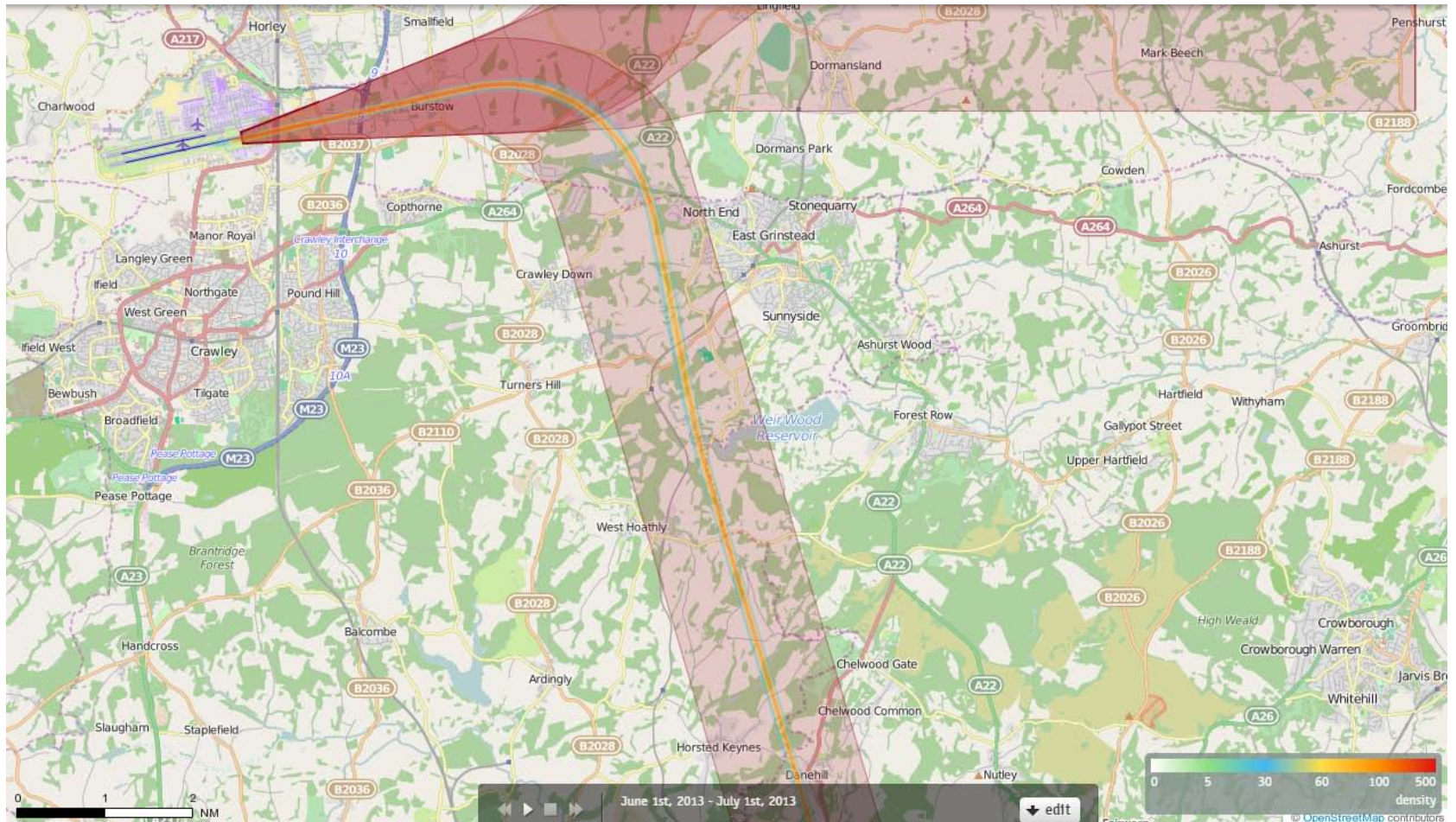
Each track is drawn as a line which has a width of just a few pixels and each pixel on the screen counts how often a 'track line' comes across this pixel when drawing all the tracks.

When all the tracks have been drawn, each pixel decides upon its colour based on the number of times a 'track line' has come across that pixel. The conversion from "count" to "colour" is guided by the numbers and colours given in the current Palette.

Counts in between are mapped to colours in between. If 100 were orange and 200 were red, then 150 would be coloured some orangy red.

# 08SEAFORD Density June 2013

## 174 Aircraft – Showing P-RNAV Departures Only



### Track density

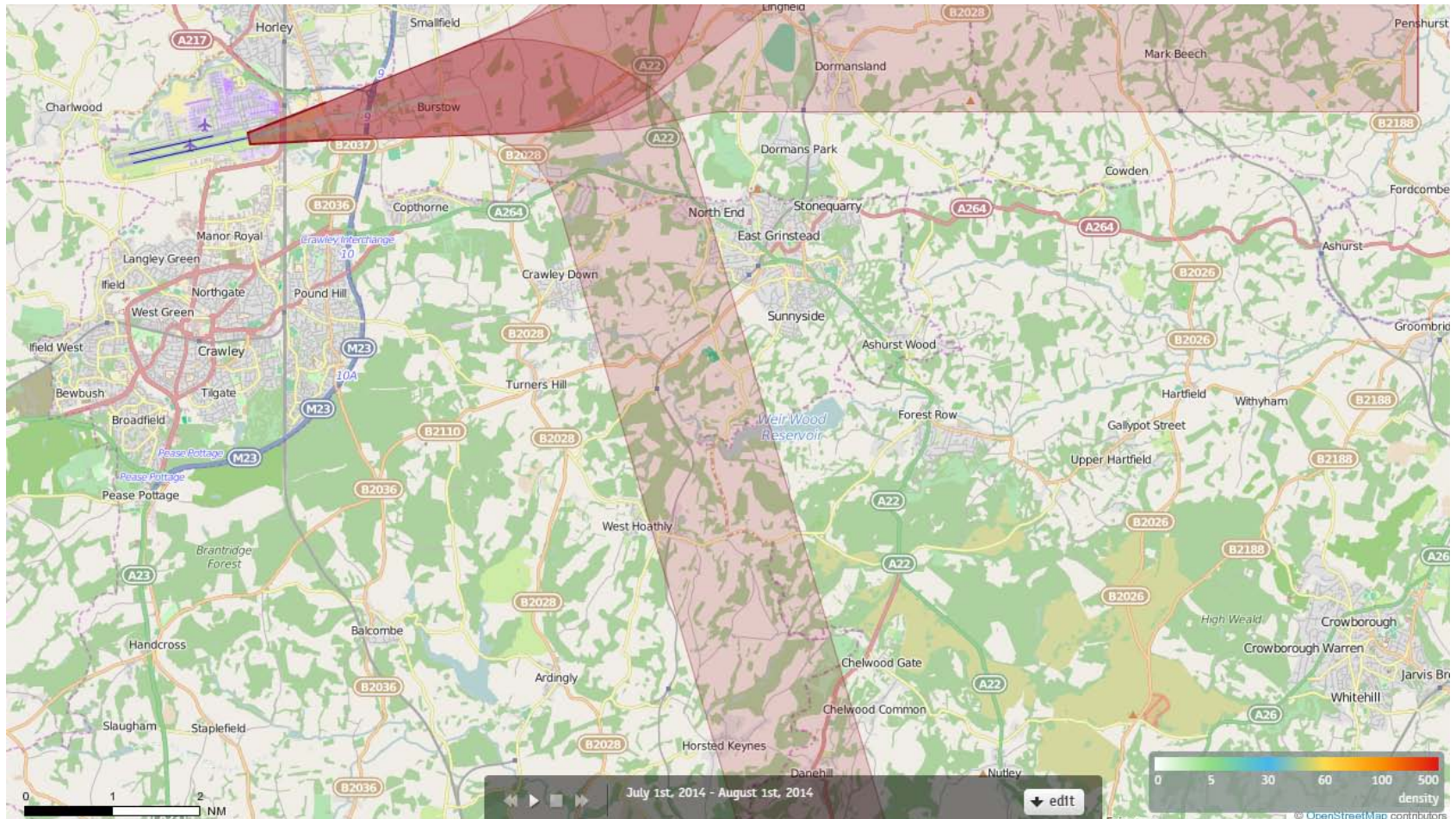
Each track is drawn as a line which has a width of just a few pixels and each pixel on the screen counts how often a 'track line' comes across this pixel when drawing all the tracks.

When all the tracks have been drawn, each pixel decides upon its colour based on the number of times a 'track line' has come across that pixel. The conversion from "count" to "colour" is guided by the numbers and colours given in the current Palette.

Counts in between are mapped to colours in between. If 100 were orange and 200 were red, then 150 would be coloured some orangy red.

# 08SEAFORD Density July 2014

## 18 Aircraft – Showing CONVENTIONAL Departures Only



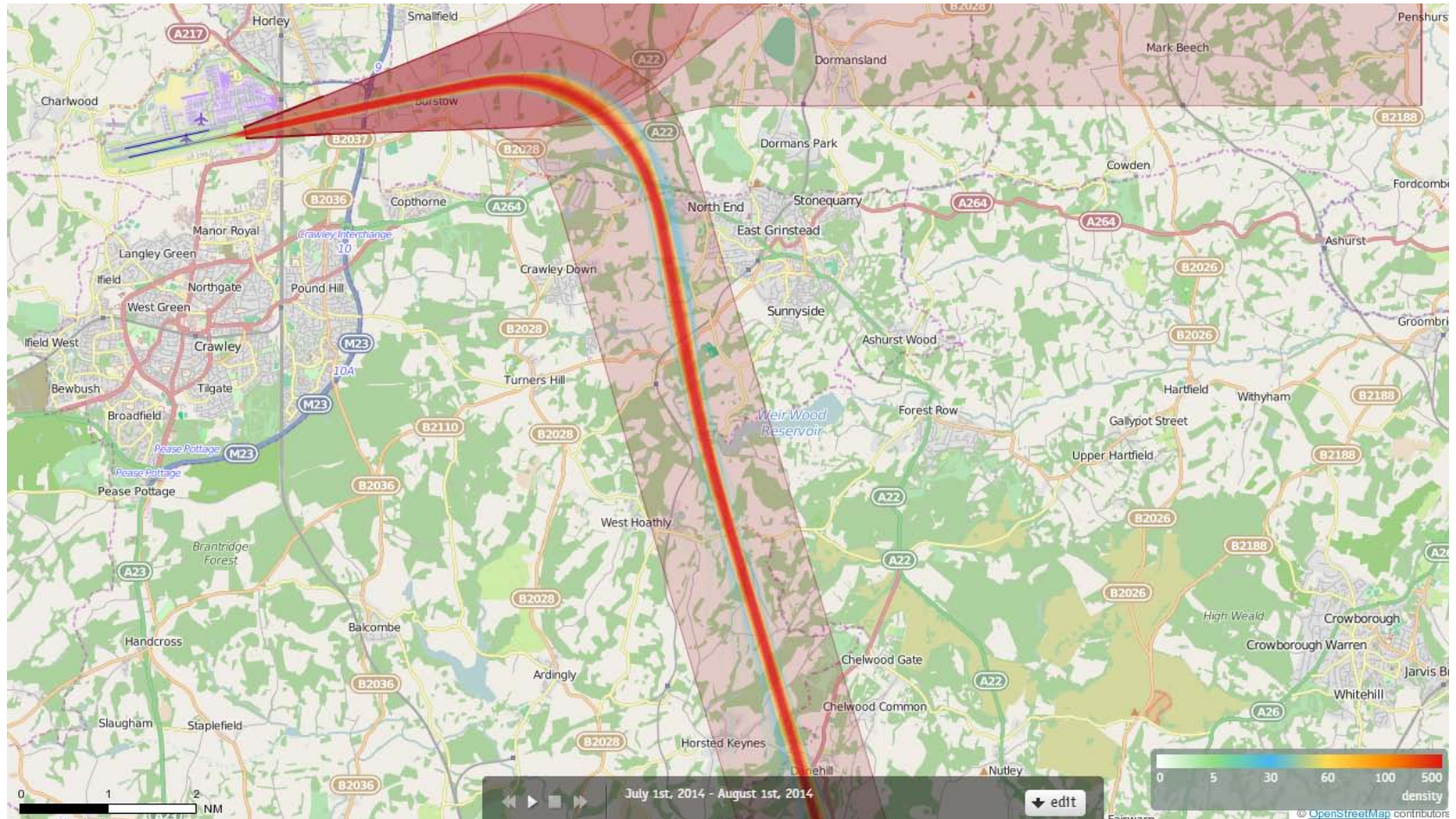
### Track density

Each track is drawn as a line which has a width of just a few pixels and each pixel on the screen counts how often a 'track line' comes across this pixel when drawing all the tracks.

When all the tracks have been drawn, each pixel decides upon its colour based on the number of times a 'track line' has come across that pixel. The conversion from "count" to "colour" is guided by the numbers and colours given in the current Palette.

Counts in between are mapped to colours in between. If 100 were orange and 200 were red, then 150 would be coloured some orangy red.

# 08SEAFORD Density July 2014 1227 Aircraft – Showing P-RNAV Departures Only



## Track density

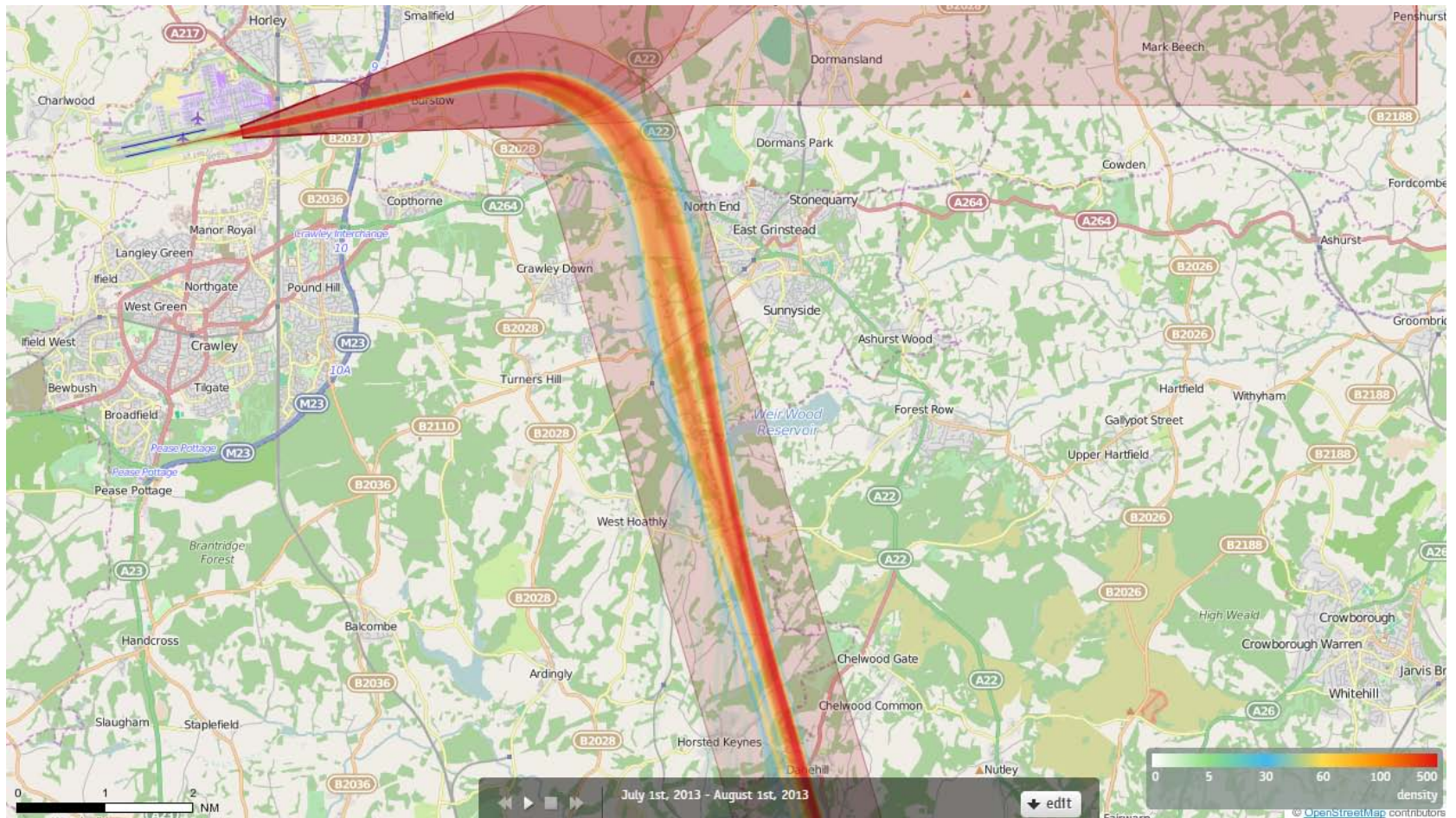
Each track is drawn as a line which has a width of just a few pixels and each pixel on the screen counts how often a 'track line' comes across this pixel when drawing all the tracks.

When all the tracks have been drawn, each pixel decides upon its colour based on the number of times a 'track line' has come across that pixel. The conversion from "count" to "colour" is guided by the numbers and colours given in the current Palette.

Counts in between are mapped to colours in between. If 100 were orange and 200 were red, then 150 would be coloured some orangy red.

# 08SEAFORD Density July 2013

## 1544 Aircraft – Showing CONVENTIONAL Departures Only



### Track density

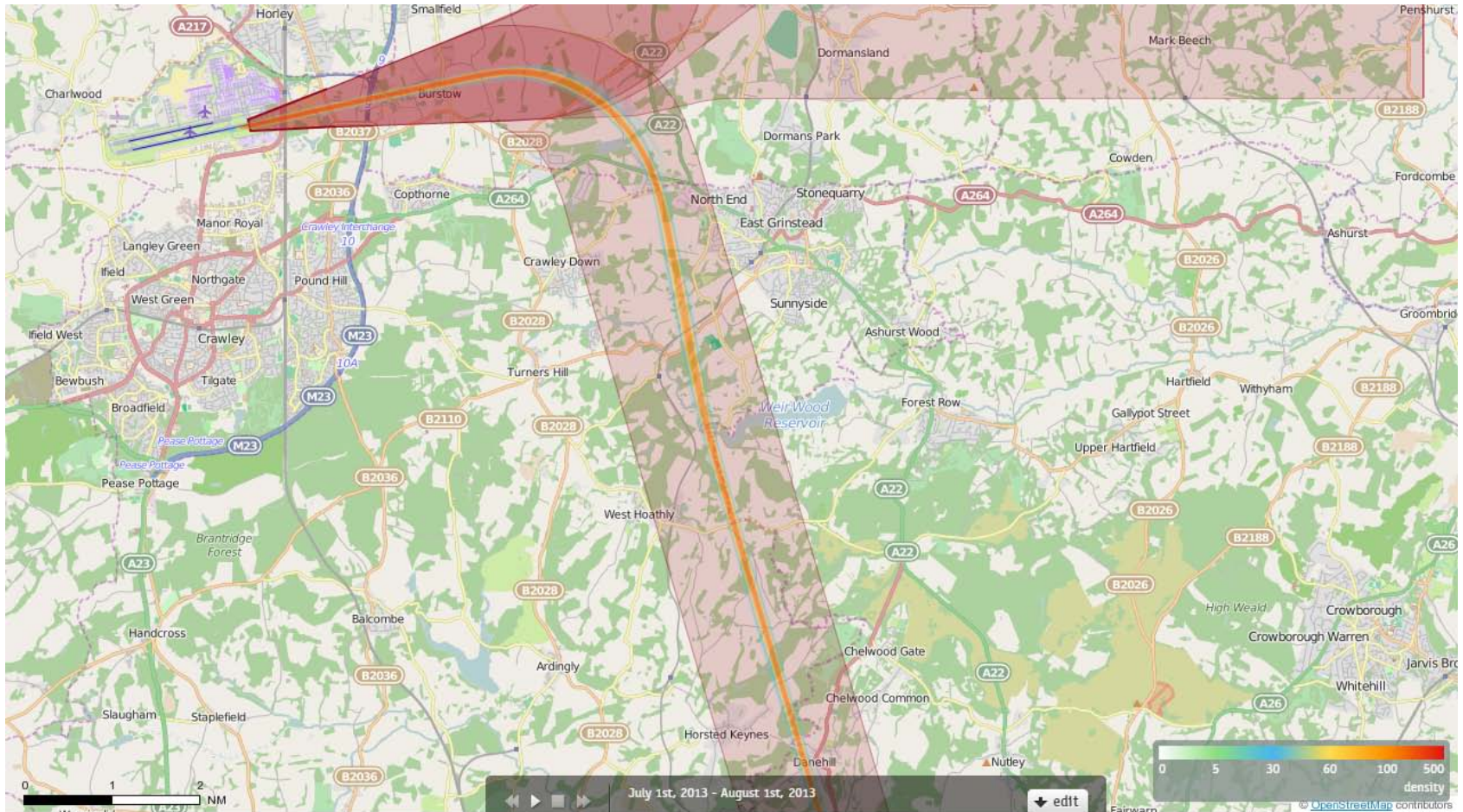
Each track is drawn as a line which has a width of just a few pixels and each pixel on the screen counts how often a 'track line' comes across this pixel when drawing all the tracks.

When all the tracks have been drawn, each pixel decides upon its colour based on the number of times a 'track line' has come across that pixel. The conversion from "count" to "colour" is guided by the numbers and colours given in the current Palette.

Counts in between are mapped to colours in between. If 100 were orange and 200 were red, then 150 would be coloured some orangy red.



# 08SEAFORD Density July 2013 250 Aircraft – Showing P-RNAV Departures Only



## Track density

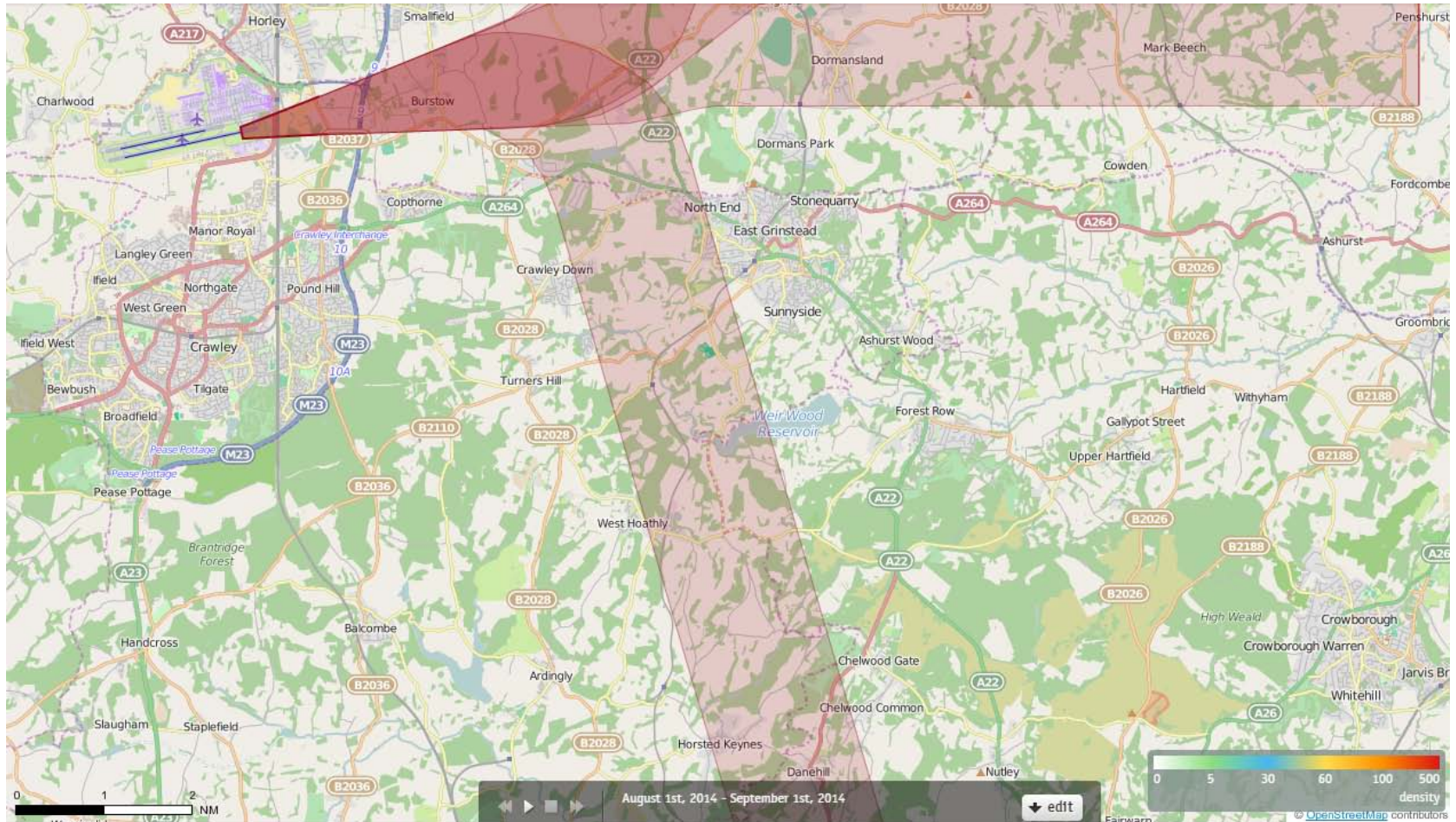
Each track is drawn as a line which has a width of just a few pixels and each pixel on the screen counts how often a 'track line' comes across this pixel when drawing all the tracks.

When all the tracks have been drawn, each pixel decides upon its colour based on the number of times a 'track line' has come across that pixel. The conversion from "count" to "colour" is guided by the numbers and colours given in the current Palette.

Counts in between are mapped to colours in between. If 100 were orange and 200 were red, then 150 would be coloured some orangy red.

# 08SEAFORD Density August 2014

## 8 Aircraft – Showing CONVENTIONAL Departures Only



### Track density

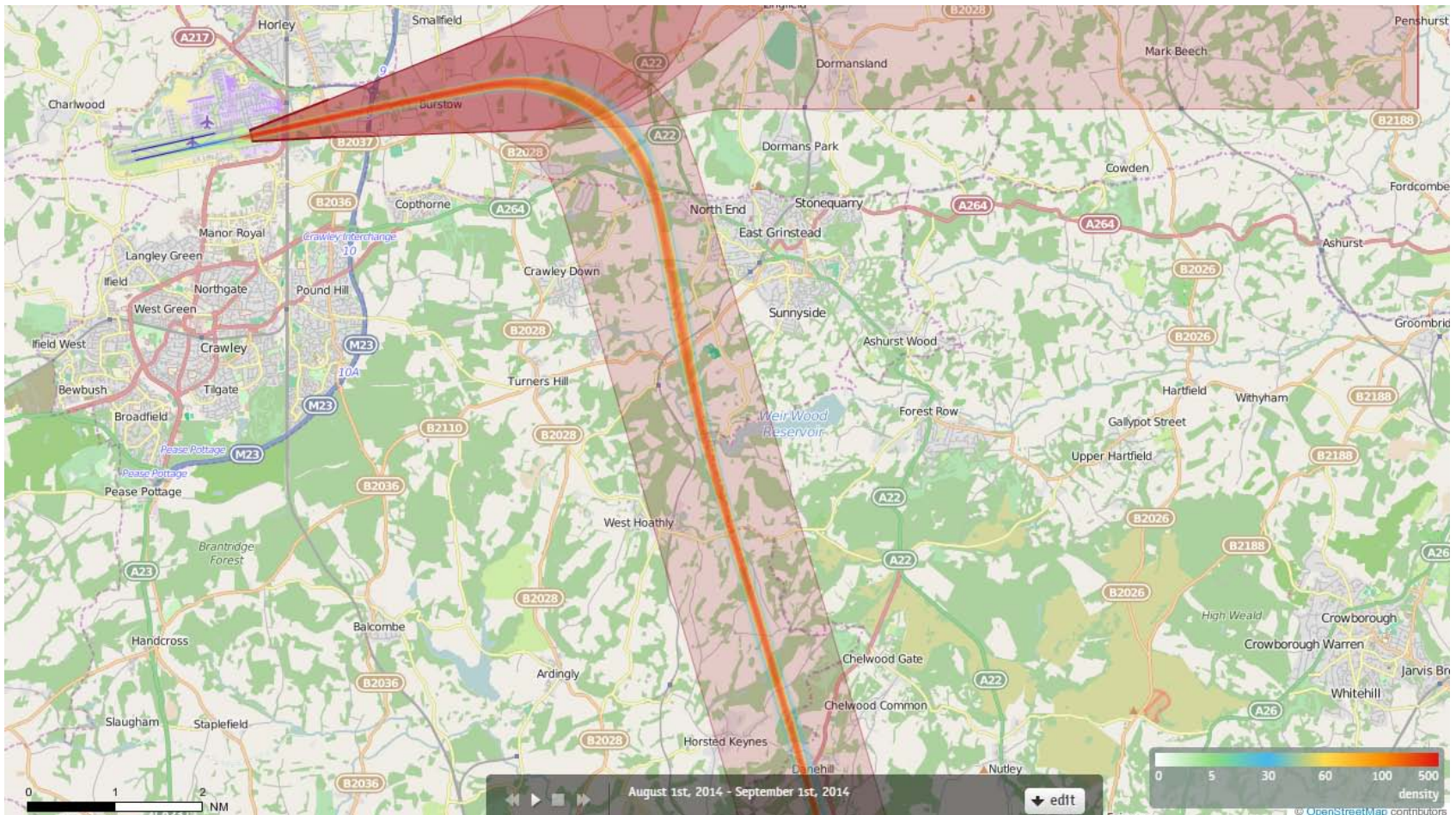
Each track is drawn as a line which has a width of just a few pixels and each pixel on the screen counts how often a 'track line' comes across this pixel when drawing all the tracks.

When all the tracks have been drawn, each pixel decides upon its colour based on the number of times a 'track line' has come across that pixel. The conversion from "count" to "colour" is guided by the numbers and colours given in the current Palette.

Counts in between are mapped to colours in between. If 100 were orange and 200 were red, then 150 would be coloured some orangy red.

# 08SEAFORD Density August 2014

## 470 Aircraft – Showing P-RNAV Departures Only



### Track density

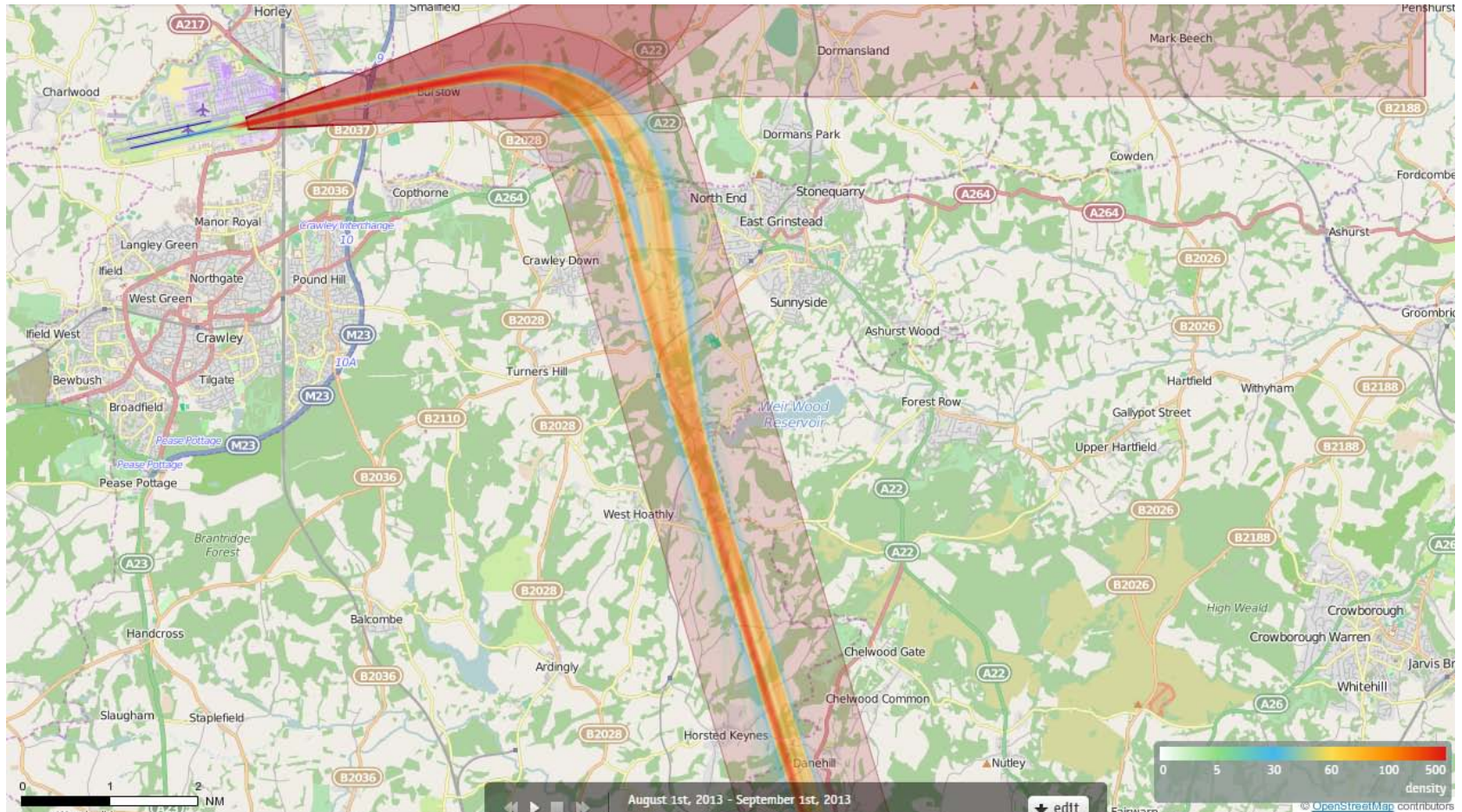
Each track is drawn as a line which has a width of just a few pixels and each pixel on the screen counts how often a 'track line' comes across this pixel when drawing all the tracks.

When all the tracks have been drawn, each pixel decides upon its colour based on the number of times a 'track line' has come across that pixel. The conversion from "count" to "colour" is guided by the numbers and colours given in the current Palette.

Counts in between are mapped to colours in between. If 100 were orange and 200 were red, then 150 would be coloured some orangy red.

# 08SEAFORD Density August 2013

## 806 Aircraft – Showing CONVENTIONAL Departures Only



### Track density

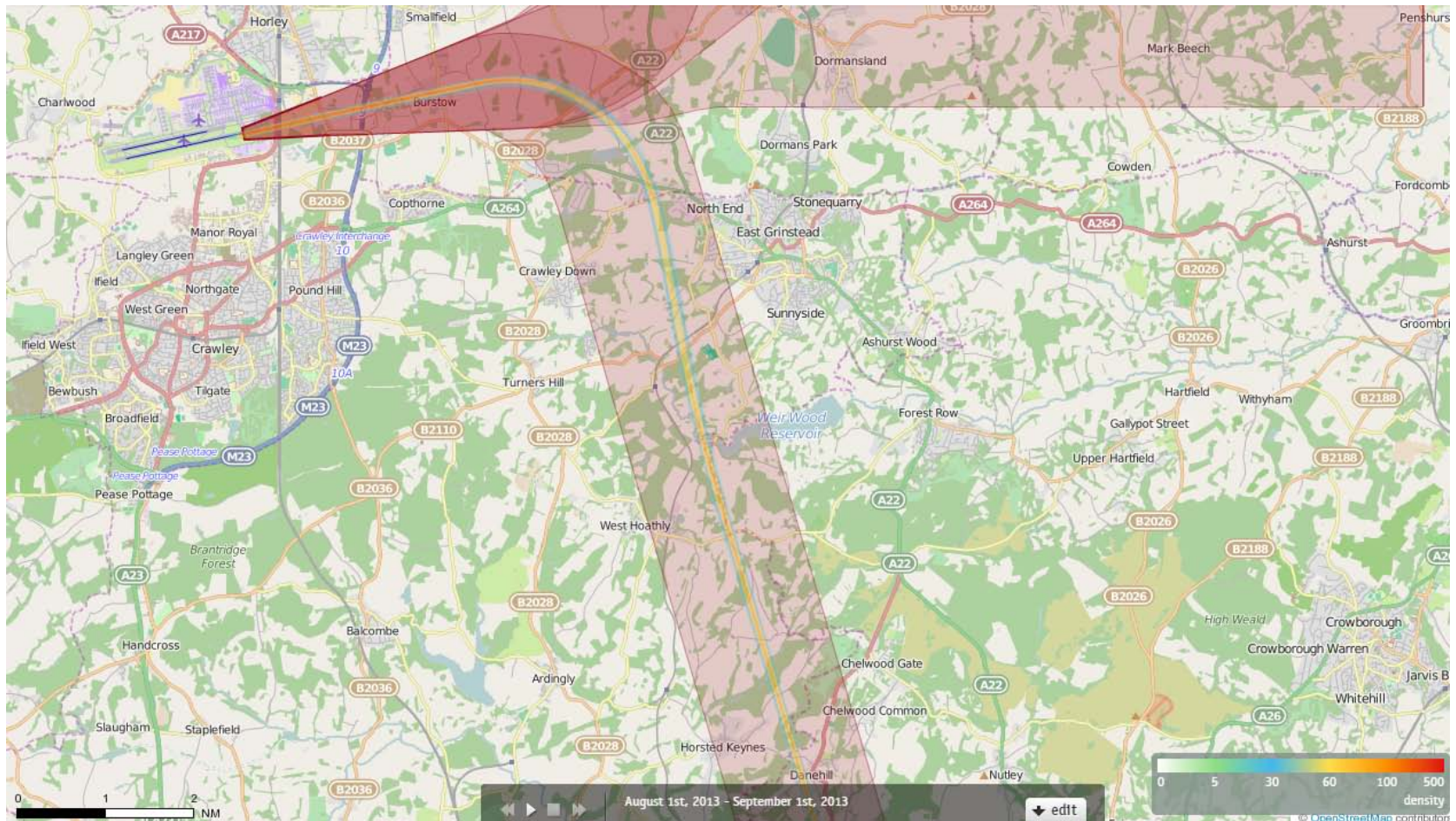
Each track is drawn as a line which has a width of just a few pixels and each pixel on the screen counts how often a 'track line' comes across this pixel when drawing all the tracks.

When all the tracks have been drawn, each pixel decides upon its colour based on the number of times a 'track line' has come across that pixel. The conversion from "count" to "colour" is guided by the numbers and colours given in the current Palette.

Counts in between are mapped to colours in between. If 100 were orange and 200 were red, then 150 would be coloured some orangy red.

# 08SEAFORD Density August 2013

## 125 Aircraft – Showing P-RNAV Departures Only



### Track density

Each track is drawn as a line which has a width of just a few pixels and each pixel on the screen counts how often a 'track line' comes across this pixel when drawing all the tracks.

When all the tracks have been drawn, each pixel decides upon its colour based on the number of times a 'track line' has come across that pixel. The conversion from "count" to "colour" is guided by the numbers and colours given in the current Palette.

Counts in between are mapped to colours in between. If 100 were orange and 200 were red, then 150 would be coloured some orangy red.