

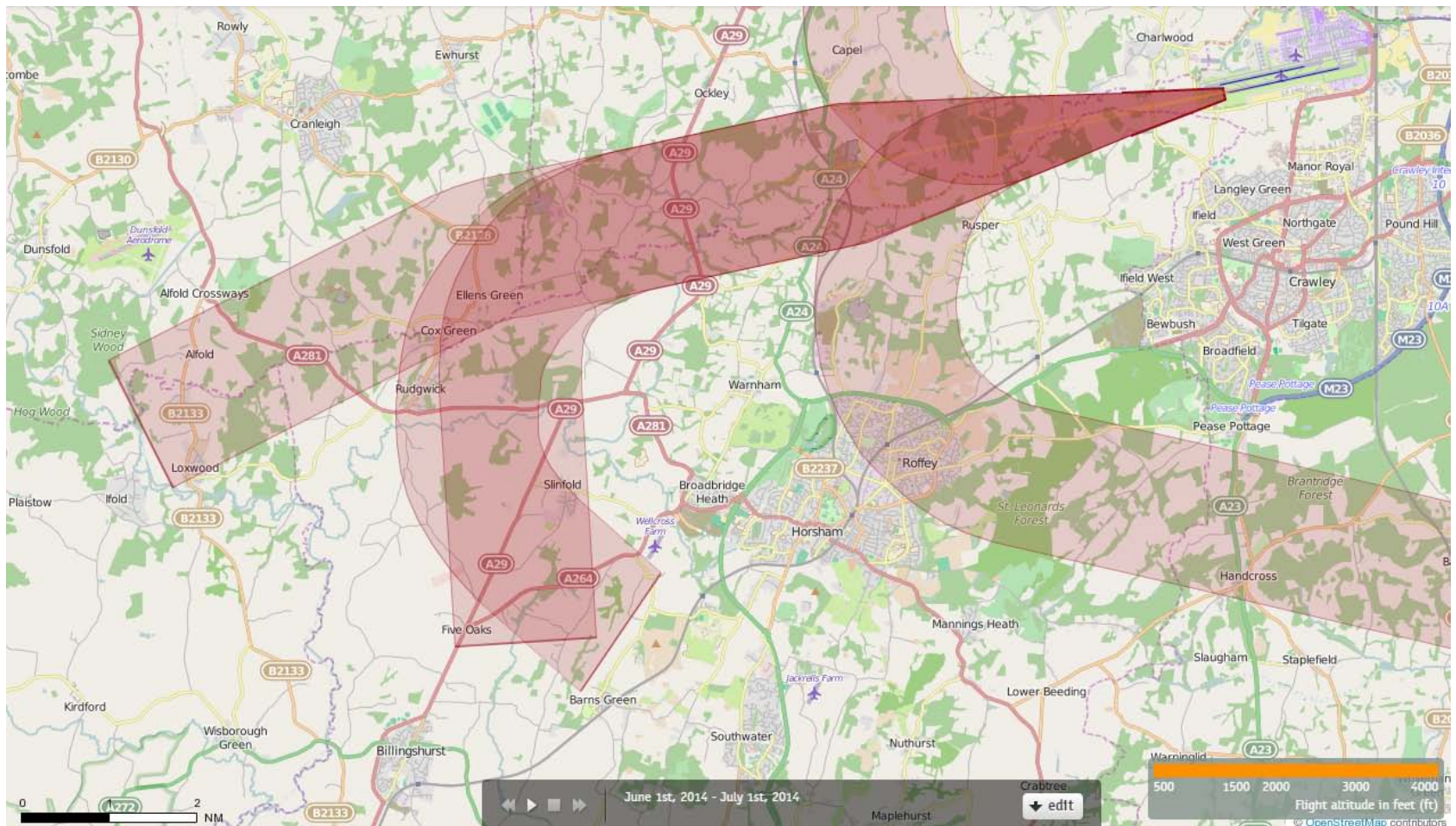
# 26 SEAFORD

## Route 8

### Pre and Post P-RNAV

During June, July and August 2014, 26SEAFORD was utilised much less due to ADNID1X departure trial route. Therefore these maps show September, October & November 2014 as well as summer months.

## 26SEAFORD June 2014 Aircraft Tracks Cut Off at 4000ft Altitude 2 Aircraft – Showing CONVENTIONAL Departures Only



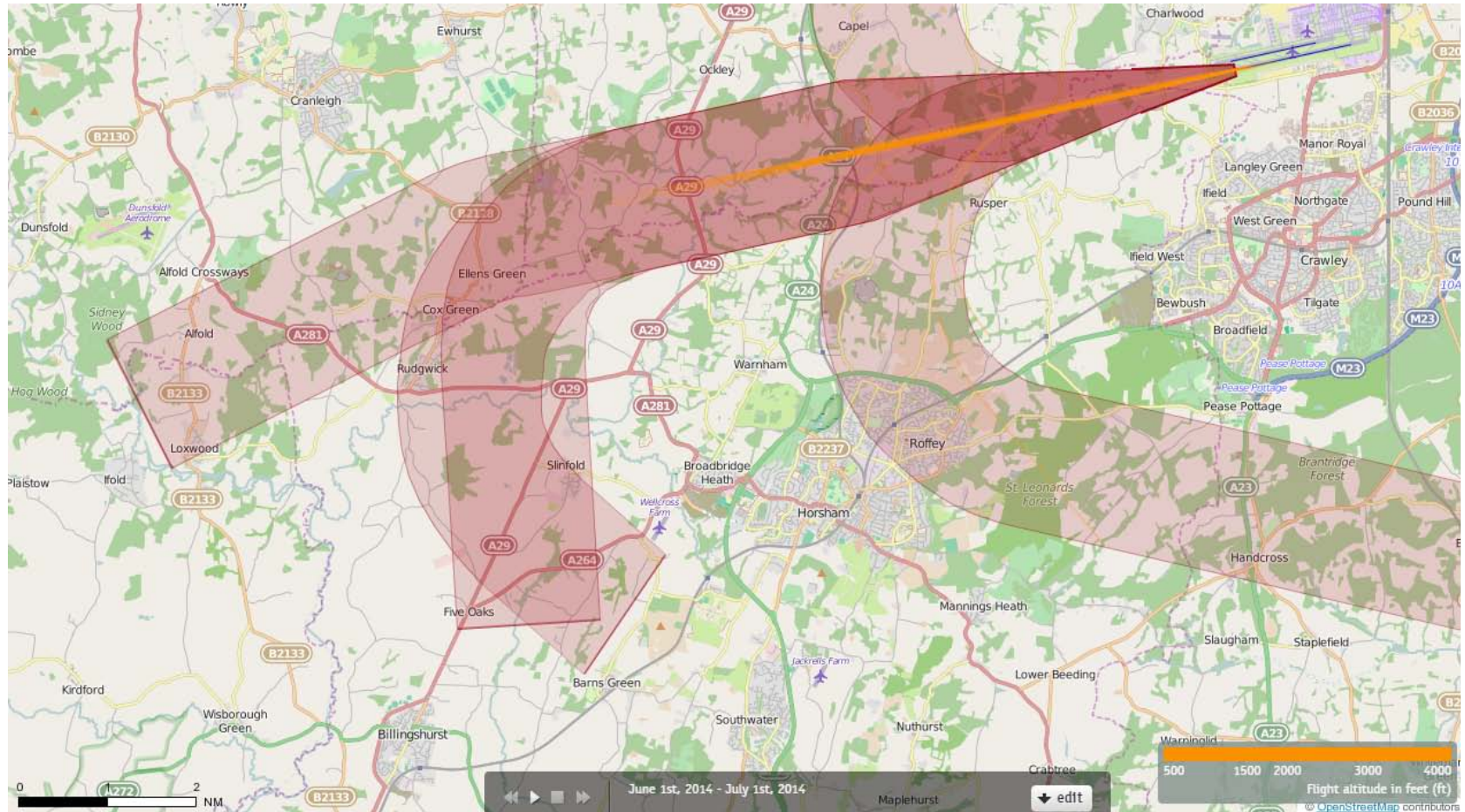
Orange plots show the tracks of aircraft until at an altitude of  
4000ft



# 26SEAFORD June 2014 Aircraft Tracks Cut Off at 4000ft Altitude

## 33 Aircraft – Showing P-RNAV Departures Only

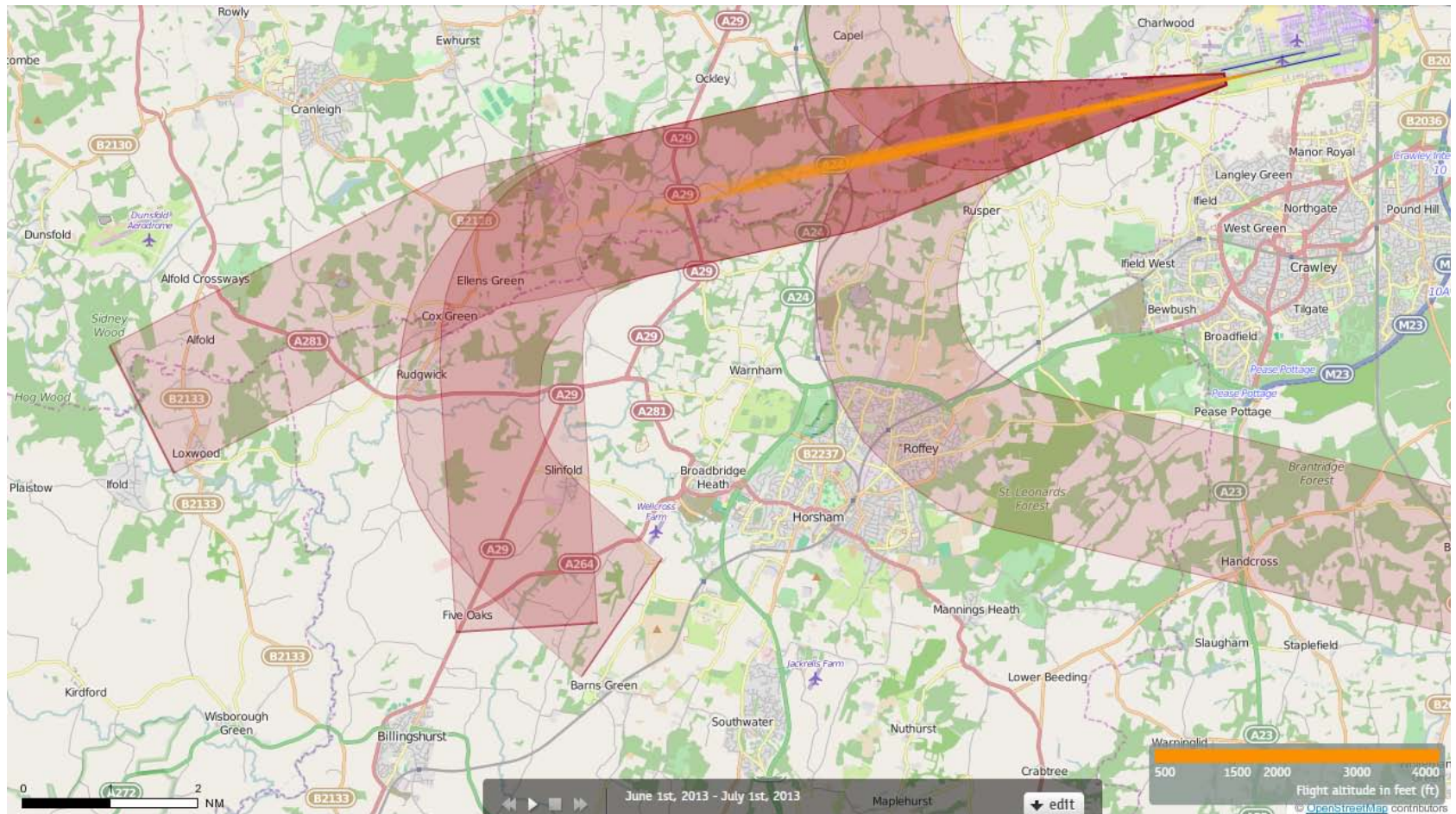
N.B. During this period the ADNID trial was in operation, therefore only 33 aircraft operated on SEAFORD



Orange plots show the tracks of aircraft until at an altitude of 4000ft



## 26SEAFORD June 2013 Aircraft Tracks Cut Off at 4000ft Altitude 40 Aircraft – Showing CONVENTIONAL Departures Only

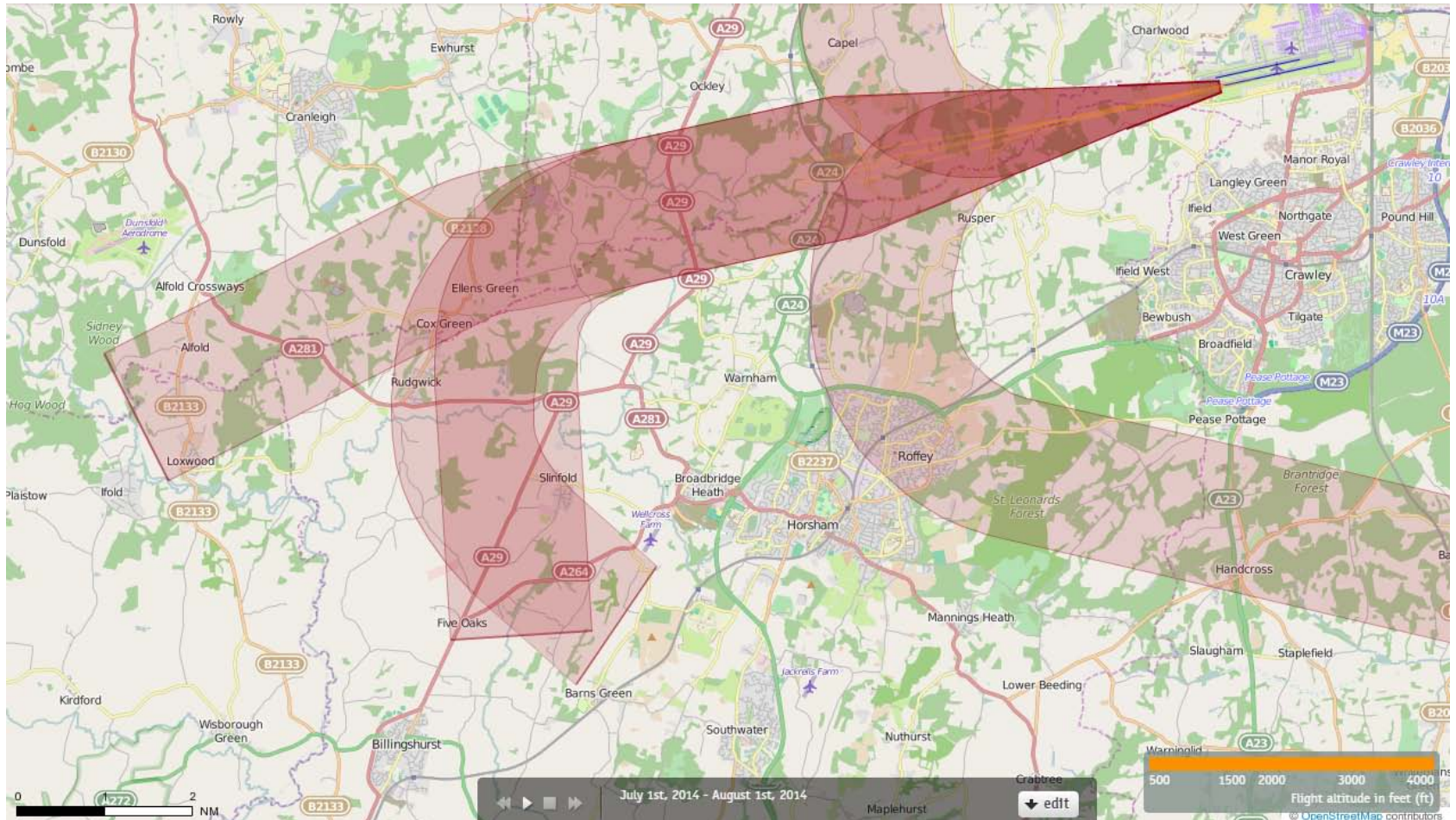


Orange plots show the tracks of aircraft until at an altitude of  
4000ft

26SEAFORD June 2013 Aircraft Tracks Cut Off at 4000ft Altitude  
0 Aircraft Used P-RNAV during this month



## 26SEAFORD July 2014 Aircraft Tracks Cut Off at 4000ft Altitude 4 Aircraft – Showing CONVENTIONAL Departures Only



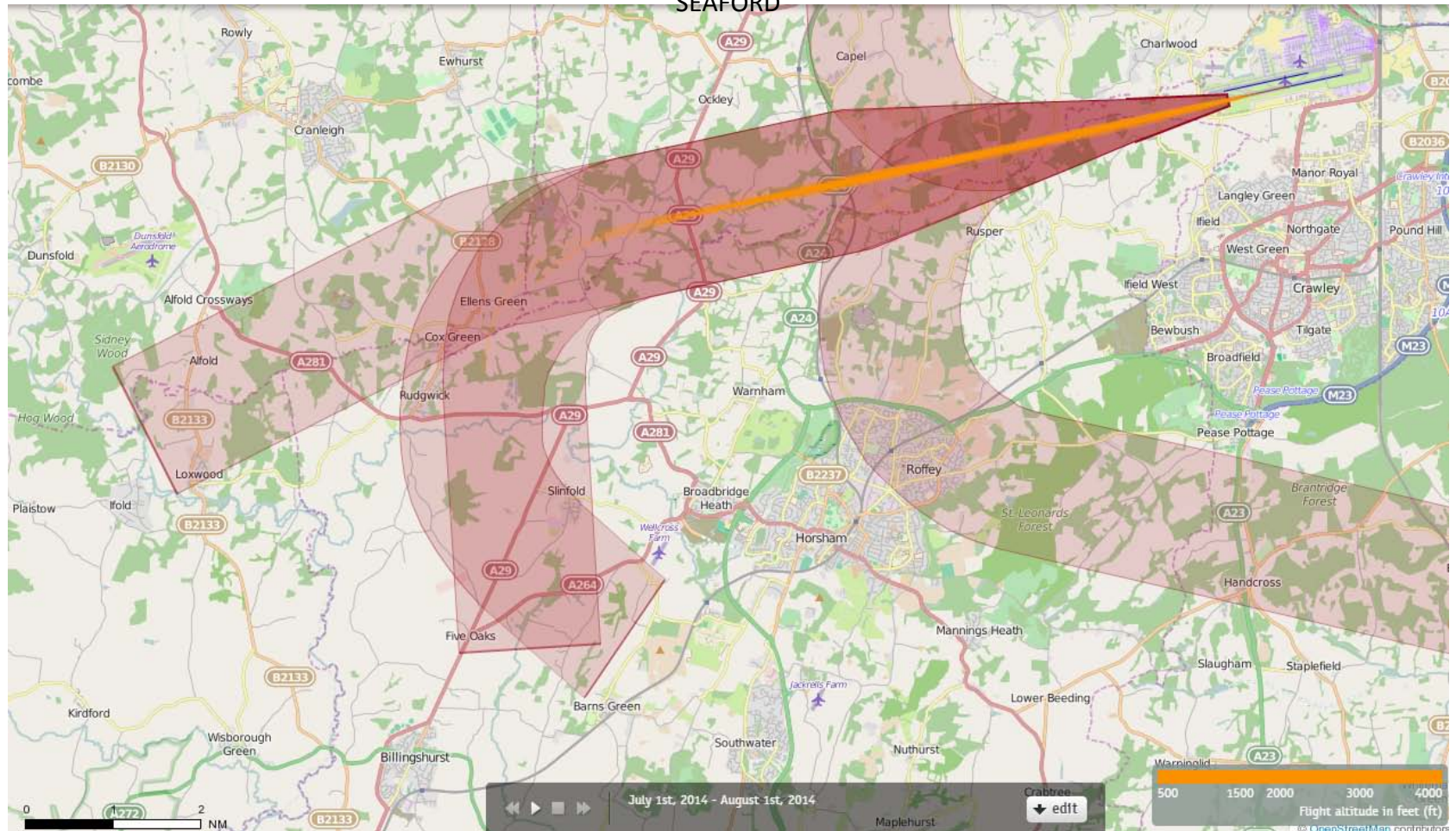
Orange plots show the tracks of aircraft until at an altitude of  
4000ft



# 26SEAFORD July 2014 Aircraft Tracks Cut Off at 4000ft Altitude

## 87 Aircraft – Showing P-RNAV Departures Only

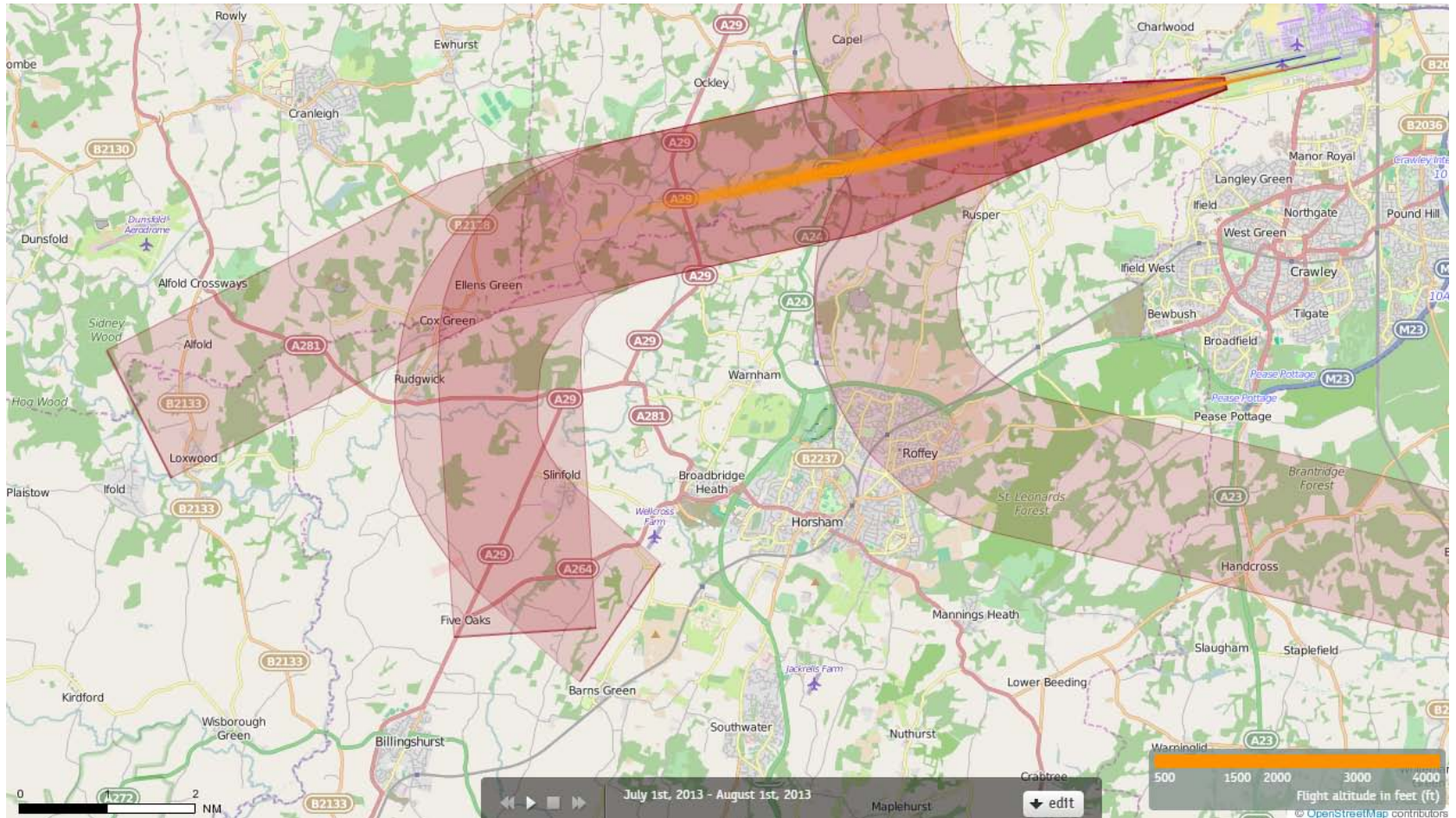
N.B. During this period the ADNID trial was in operation, therefore only 87 aircraft operated on SEAFORD



Orange plots show the tracks of aircraft until at an altitude of 4000ft



26SEAFORD July 2013 Aircraft Tracks Cut Off at 4000ft Altitude  
75 Aircraft – Showing CONVENTIONAL Departures Only

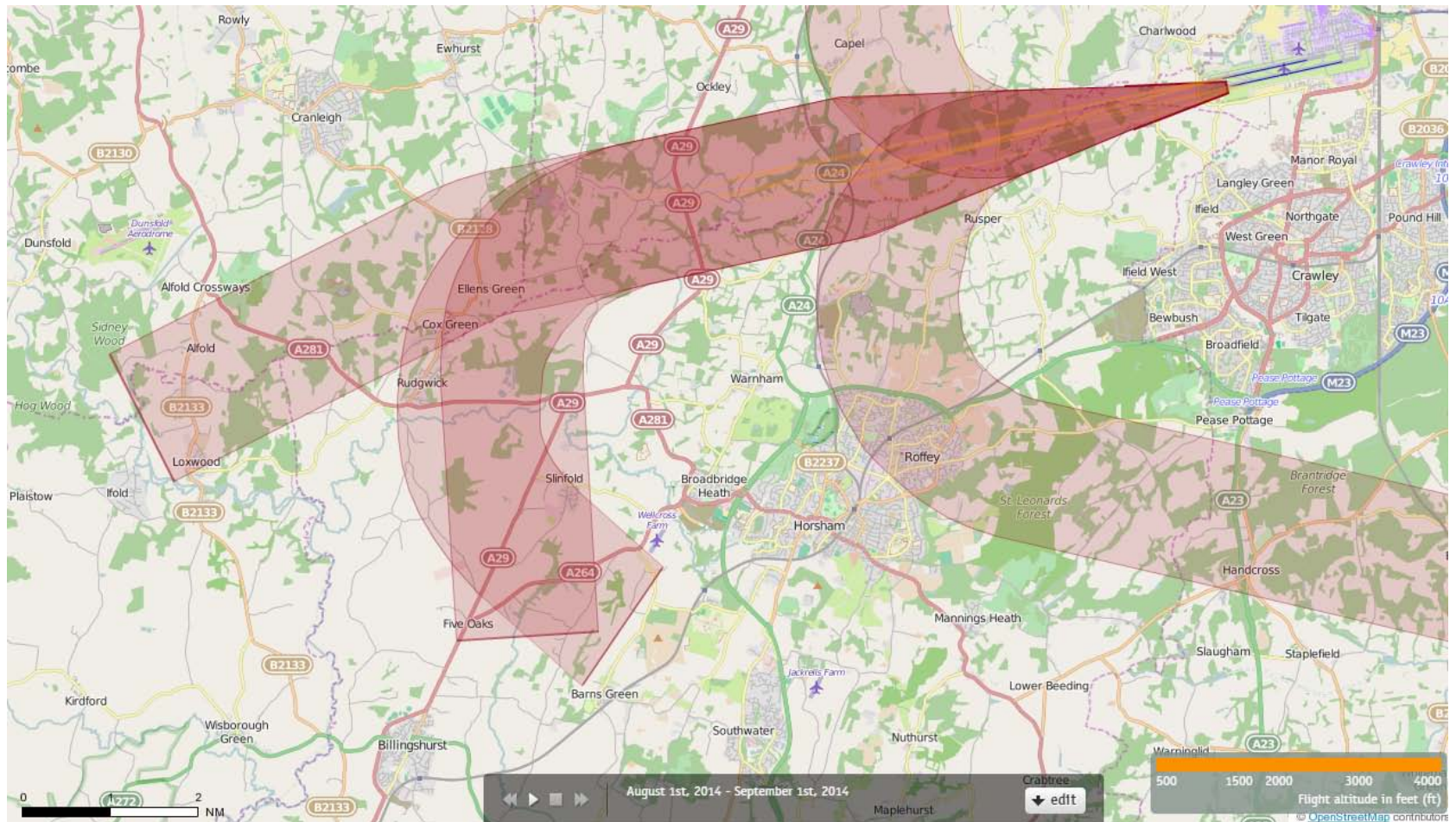


Orange plots show the tracks of aircraft until at an altitude of 4000ft



26SEAFORD July 2013 Aircraft Tracks Cut Off at 4000ft Altitude  
0 Aircraft Used P-RNAV during this month

# 26SEAFORD August 2014 Aircraft Tracks Cut Off at 4000ft Altitude 7 Aircraft – Showing CONVENTIONAL Departures Only



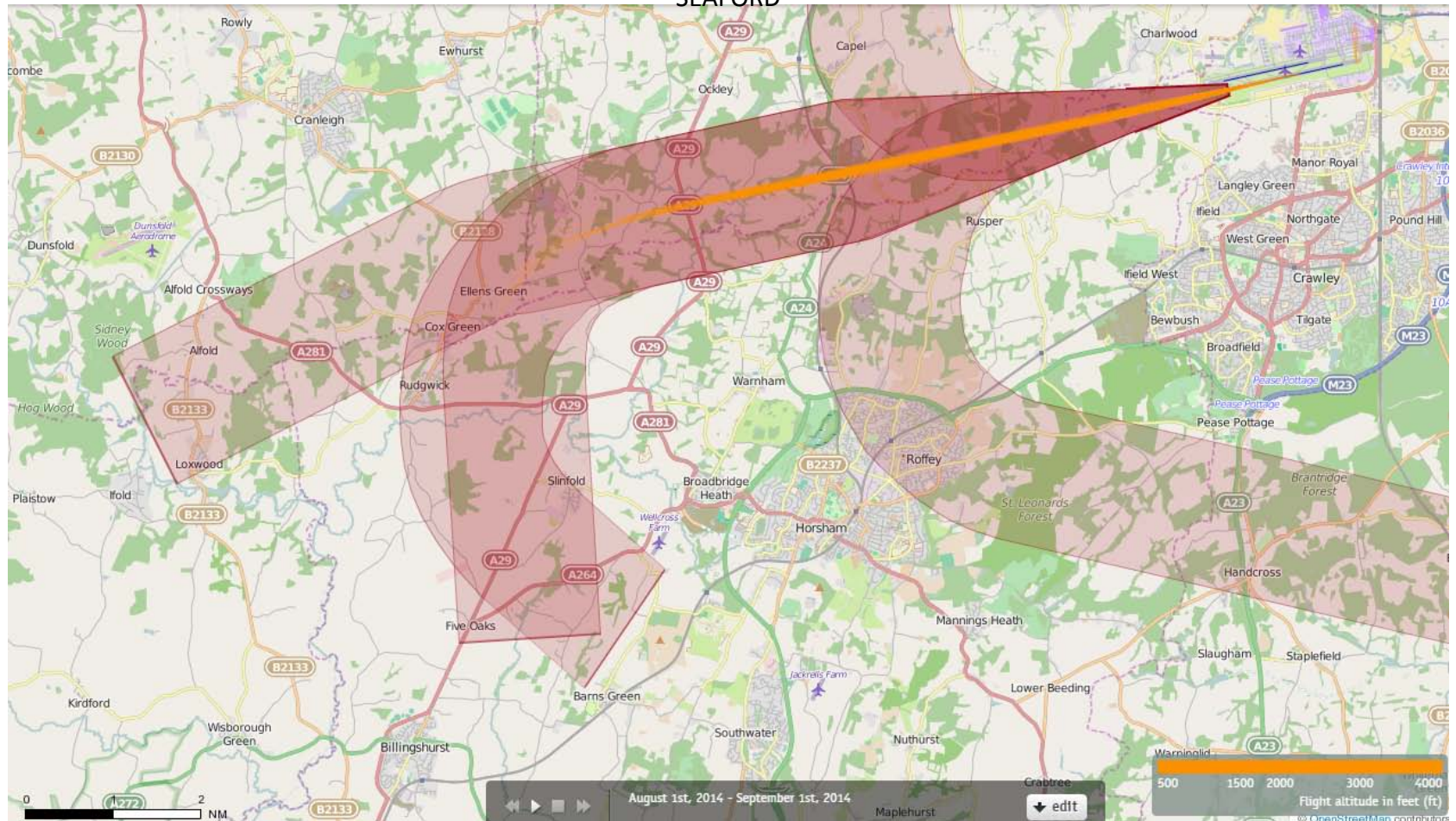
Orange plots show the tracks of aircraft until at an altitude of  
4000ft



# 26SEAFORD August 2014 Aircraft Tracks Cut Off at 4000ft Altitude

## 160 Aircraft – Showing P-RNAV Departures Only

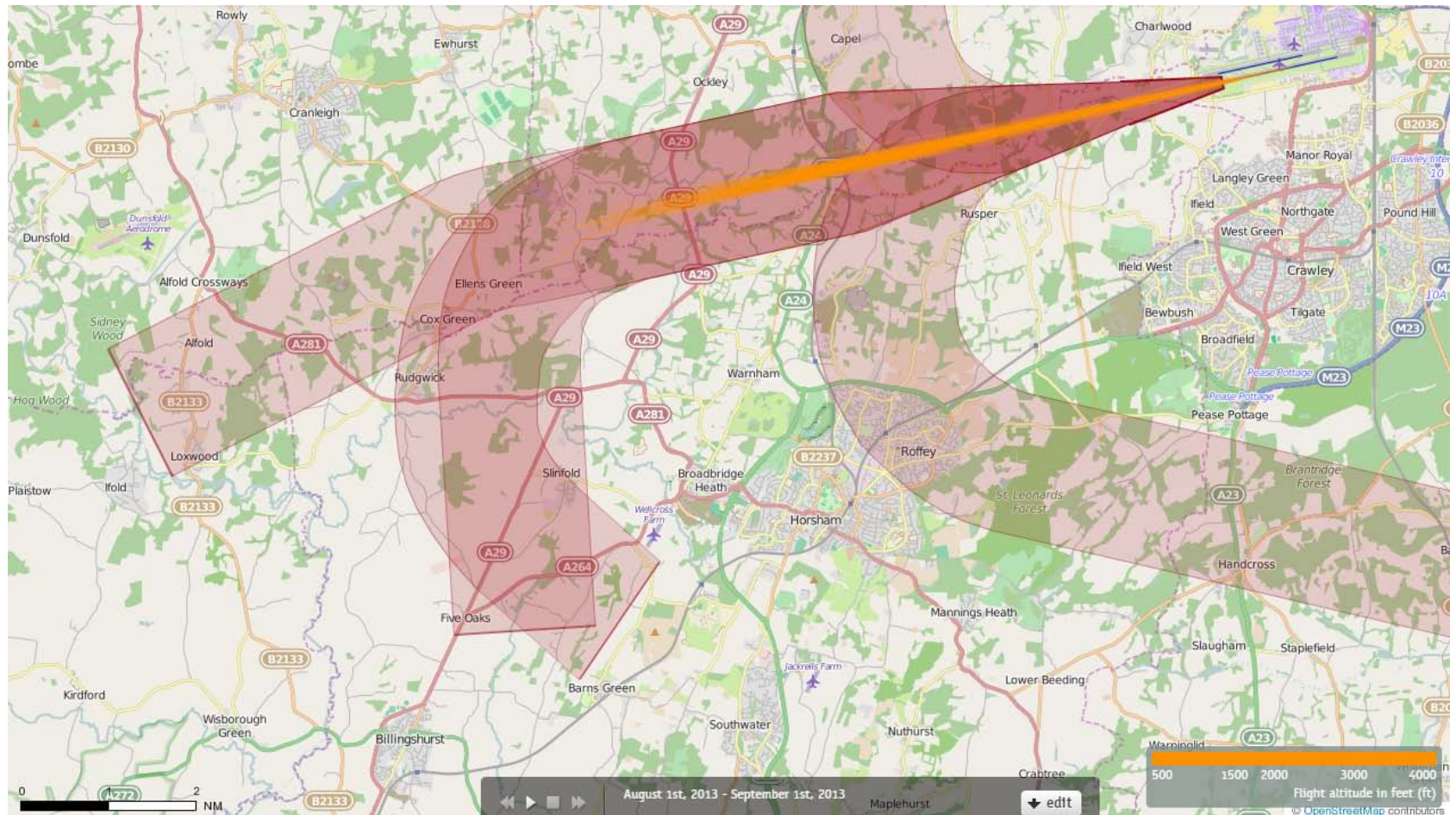
N.B. During this period the ADNID trial was in operation, therefore only 160 aircraft operated on SEAFORD



Orange plots show the tracks of aircraft until at an altitude of 4000ft



## 26SEAFORD August 2013 Aircraft Tracks Cut Off at 4000ft Altitude 110 Aircraft – Showing CONVENTIONAL Departures Only

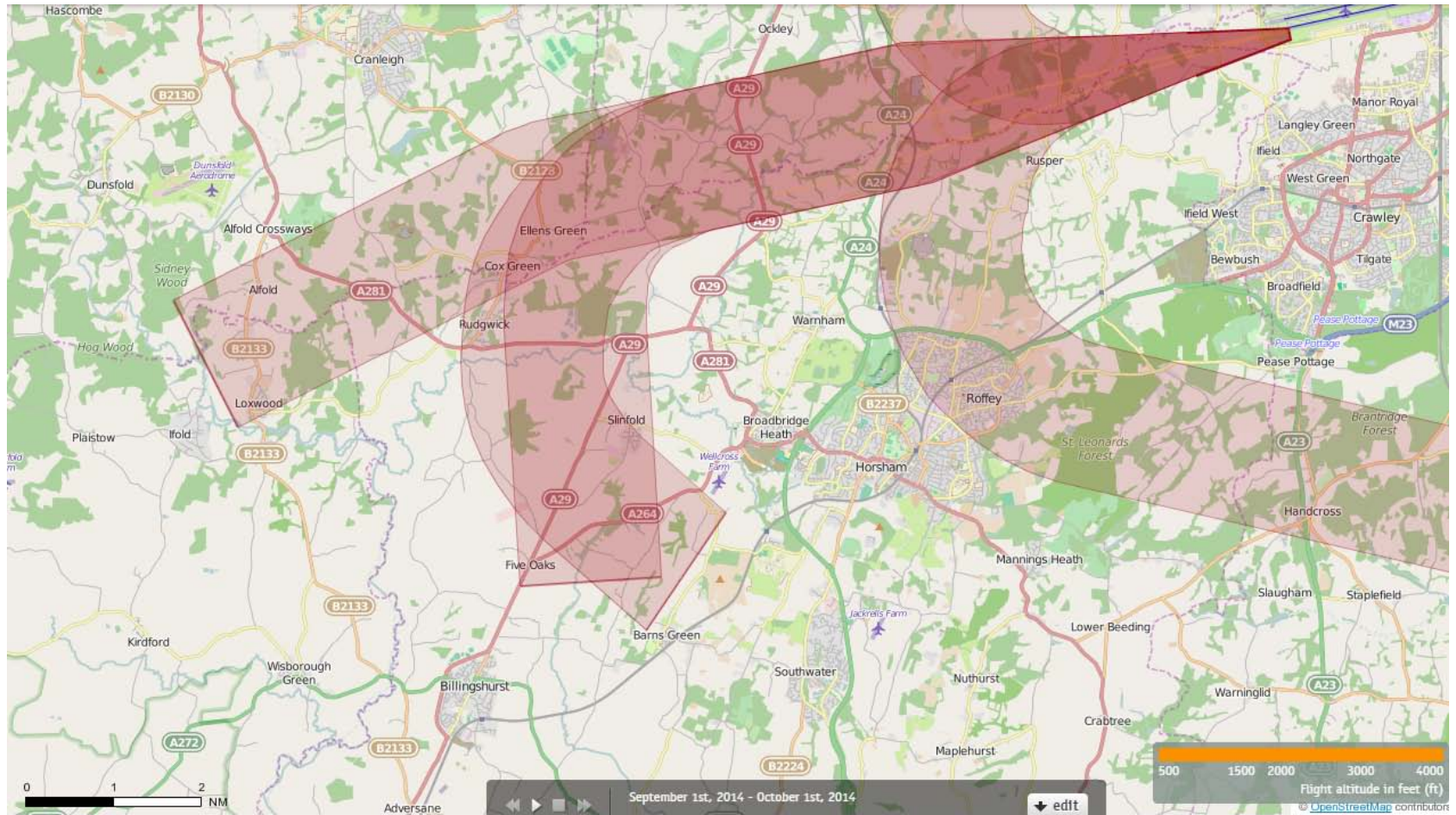


Orange plots show the tracks of aircraft until at an altitude of 4000ft



26SEAFORD August 2013 Aircraft Tracks Cut Off at 4000ft Altitude  
0 Aircraft Used P-RNAV during this month

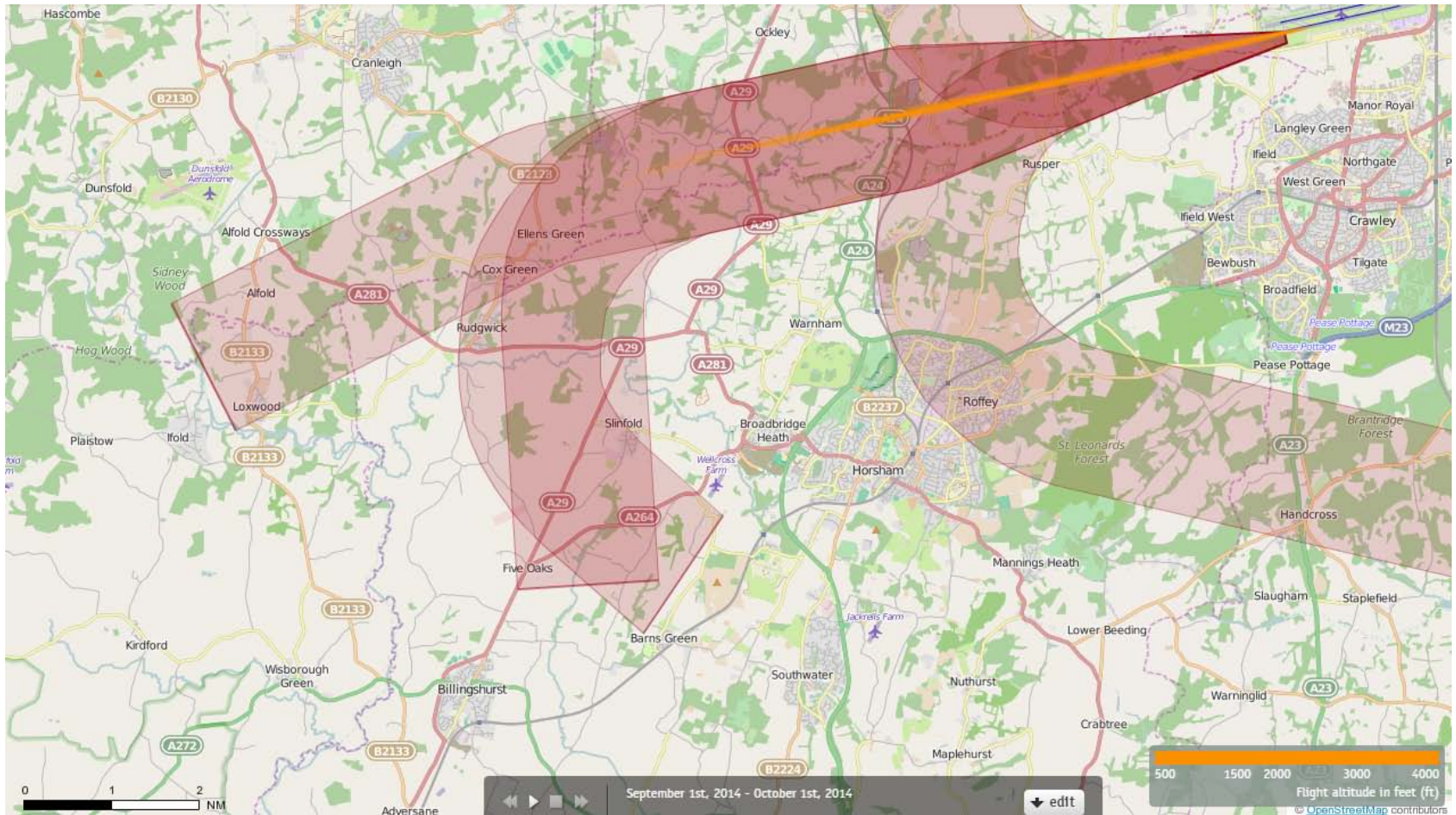
## 26SEAFORD September 2014 Aircraft Tracks Cut Off at 4000ft Altitude 2 Aircraft – Showing CONVENTIONAL Departures Only



Orange plots show the tracks of aircraft until at an altitude of  
4000ft



# 26SEAFORD September 2014 Aircraft Tracks Cut Off at 4000ft Altitude 38 Aircraft – Showing P-RNAV Departures Only

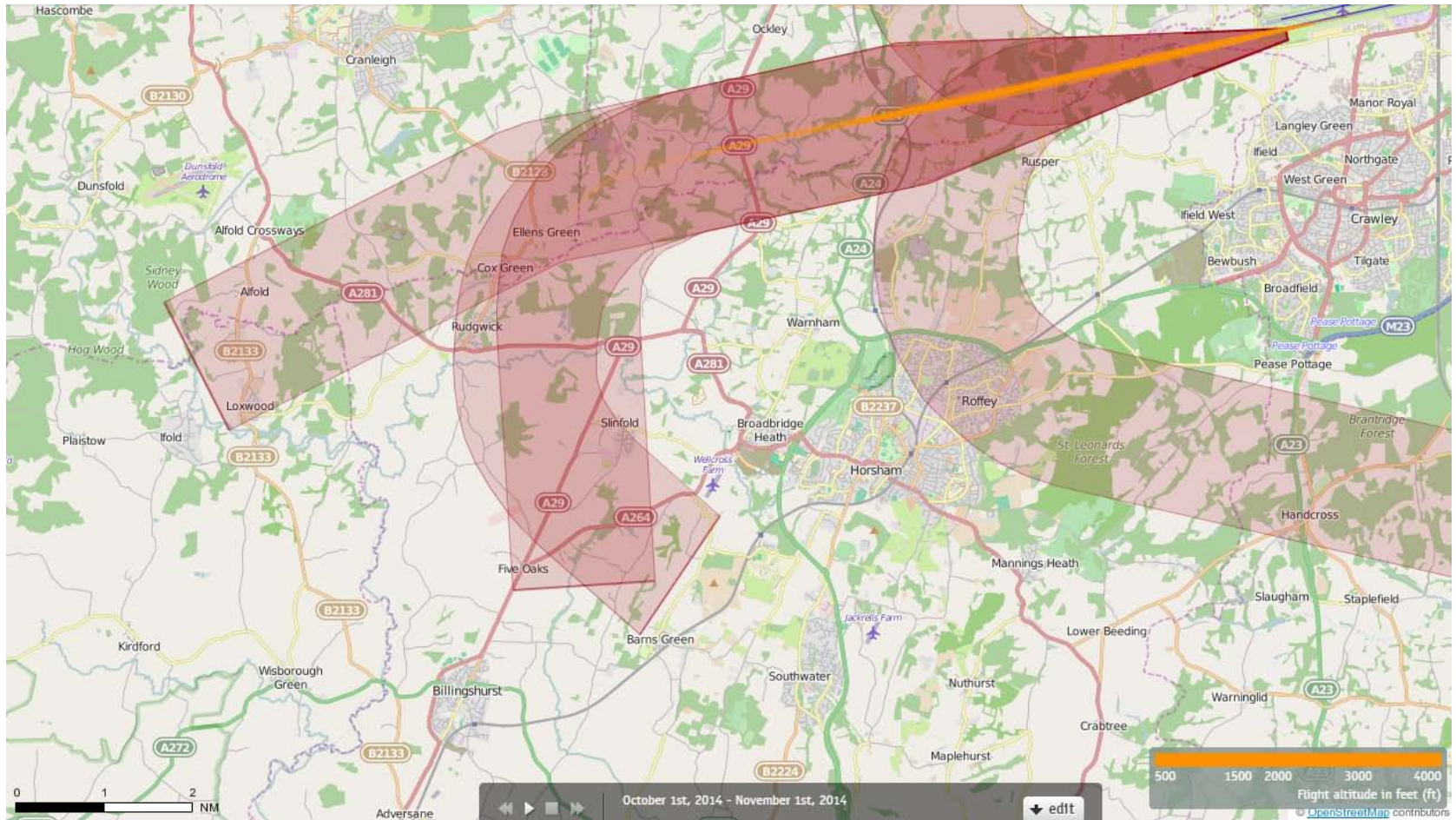


Orange plots show the tracks of aircraft until at an altitude of  
4000ft

26SEAFORD October 2014 Aircraft Tracks Cut Off at 4000ft Altitude  
0 Aircraft Used CONVENTIONAL SIDs on 26SEAFORD during this month



## 26 26SEAFORD BOGNA October 2014 Aircraft Tracks Cut Off at 4000ft Altitude 59 Aircraft – Showing P-RNAV Departures Only



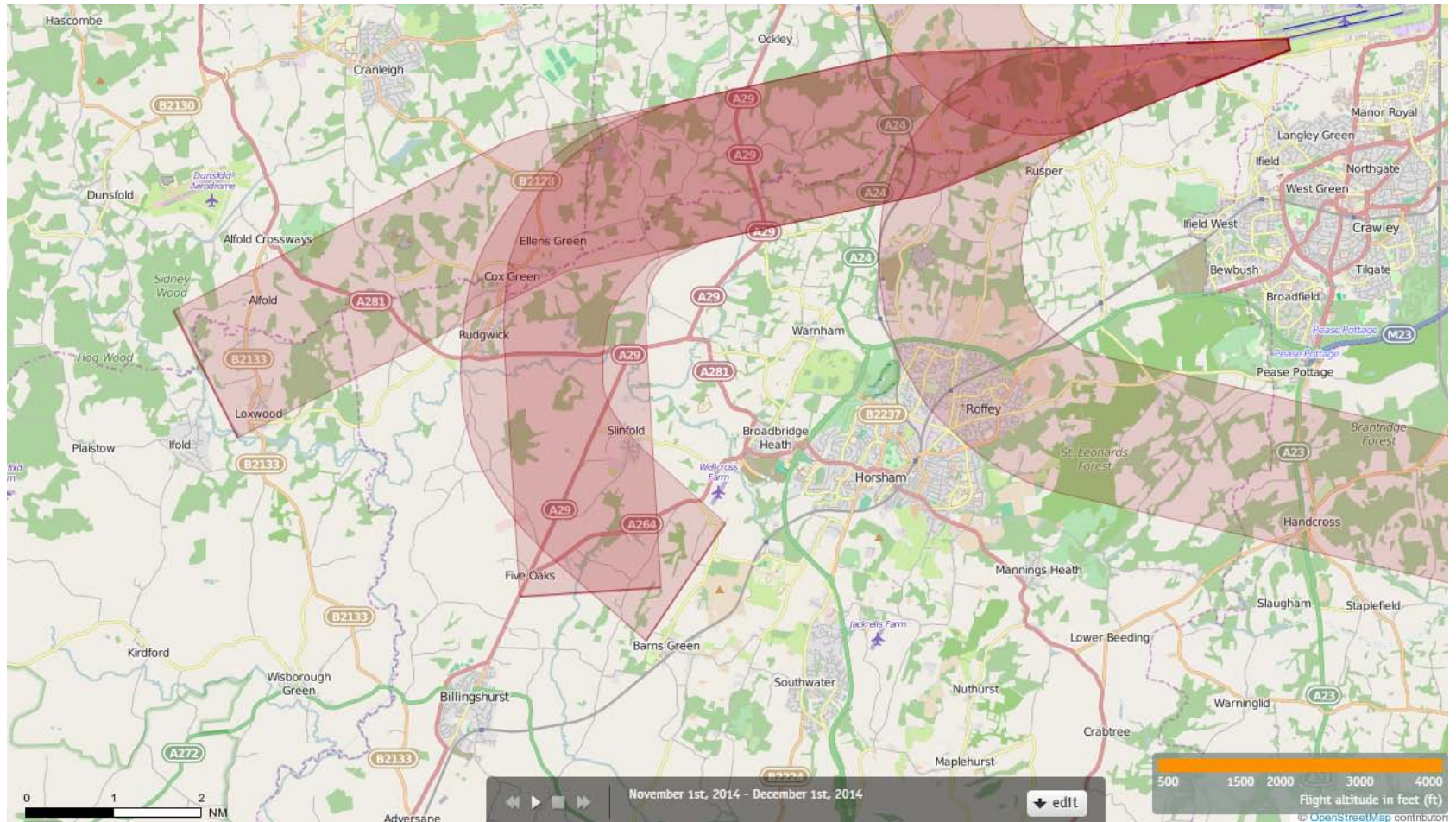
Orange plots show the tracks of aircraft until at an altitude of  
4000ft

26SEAFORD November 2014 Aircraft Tracks Cut Off at 4000ft Altitude  
0 Aircraft Used CONVENTIONAL SIDs on 26SEAFORD during this month



# 26SEAFORD November 2014 Aircraft Tracks Cut Off at 4000ft Altitude

## 1 Aircraft – Showing P-RNAV Departures Only



Orange plots show the tracks of aircraft until at an altitude of 4000ft