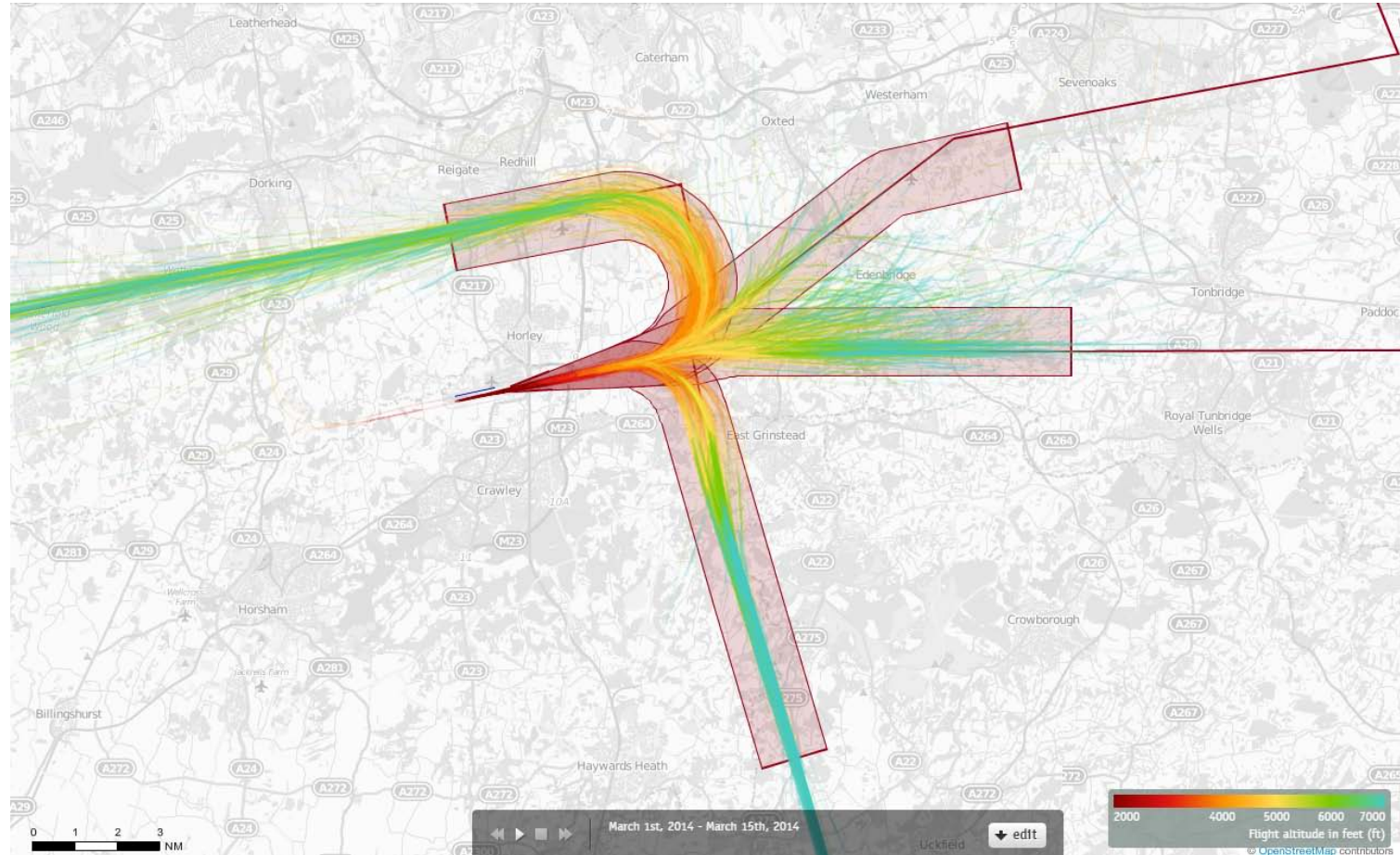


08 Departures 1st-15th March 2014

Altitude Map

282 Aircraft on SFD
325 Aircraft on CLN/DVR
174 Aircraft on LAM
384 Aircraft on KEN/SAM

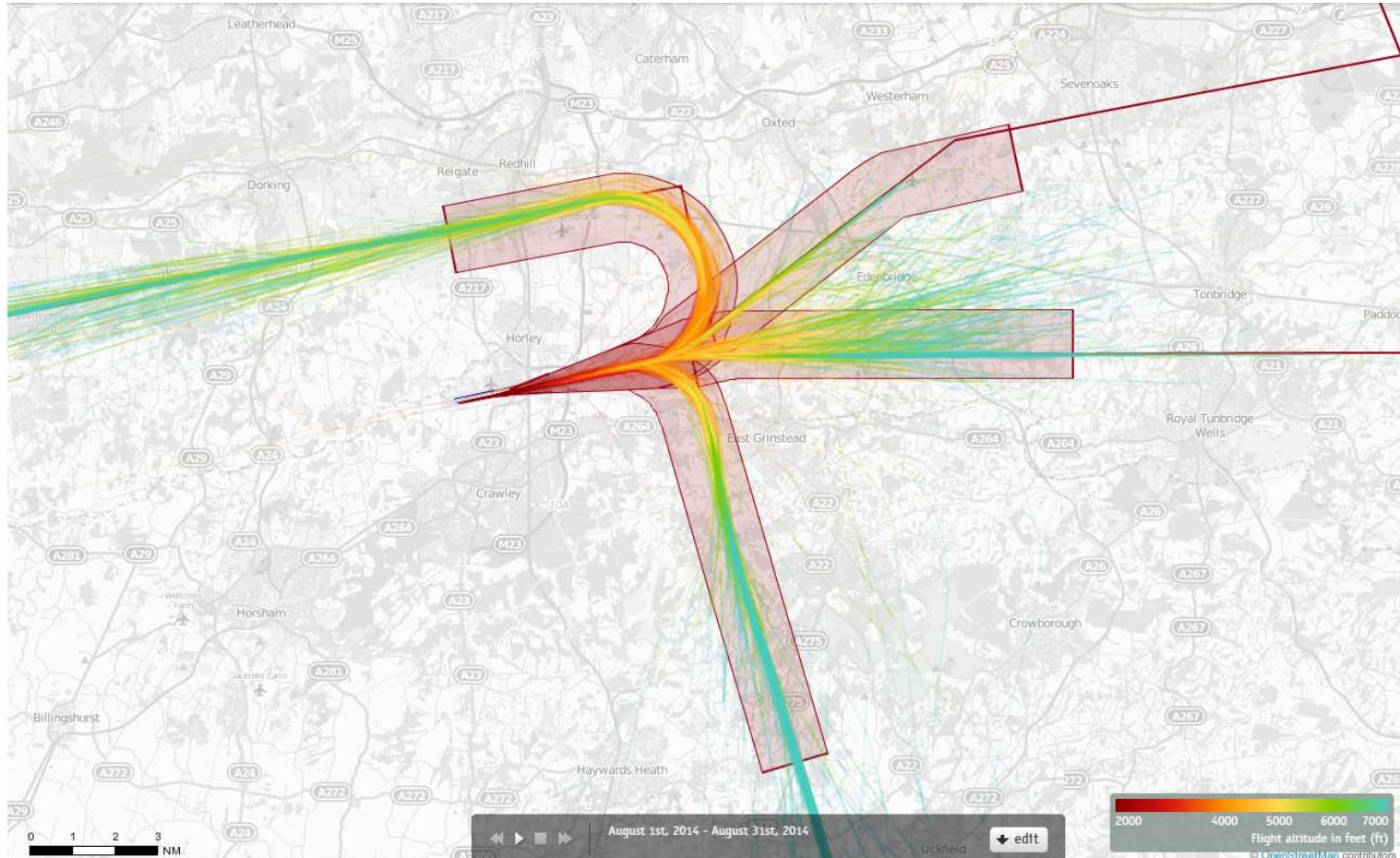


The pixels on the map show the altitude of aircraft as they pass over, displaying them as a colour used in the key. Aircraft at altitudes between those in the key (ie at 4240ft) will be shown as a blend of the colours above and below it in the key (ie a mix of 4000ft and 5000ft colours). Tracks cut off when at the maximum altitude on the key.

08 Departures 1st-31st August 2014

Altitude Map

478 Aircraft on SFD
439 Aircraft on CLN/DVR
117 Aircraft on LAM
327 Aircraft on KEN/SAM

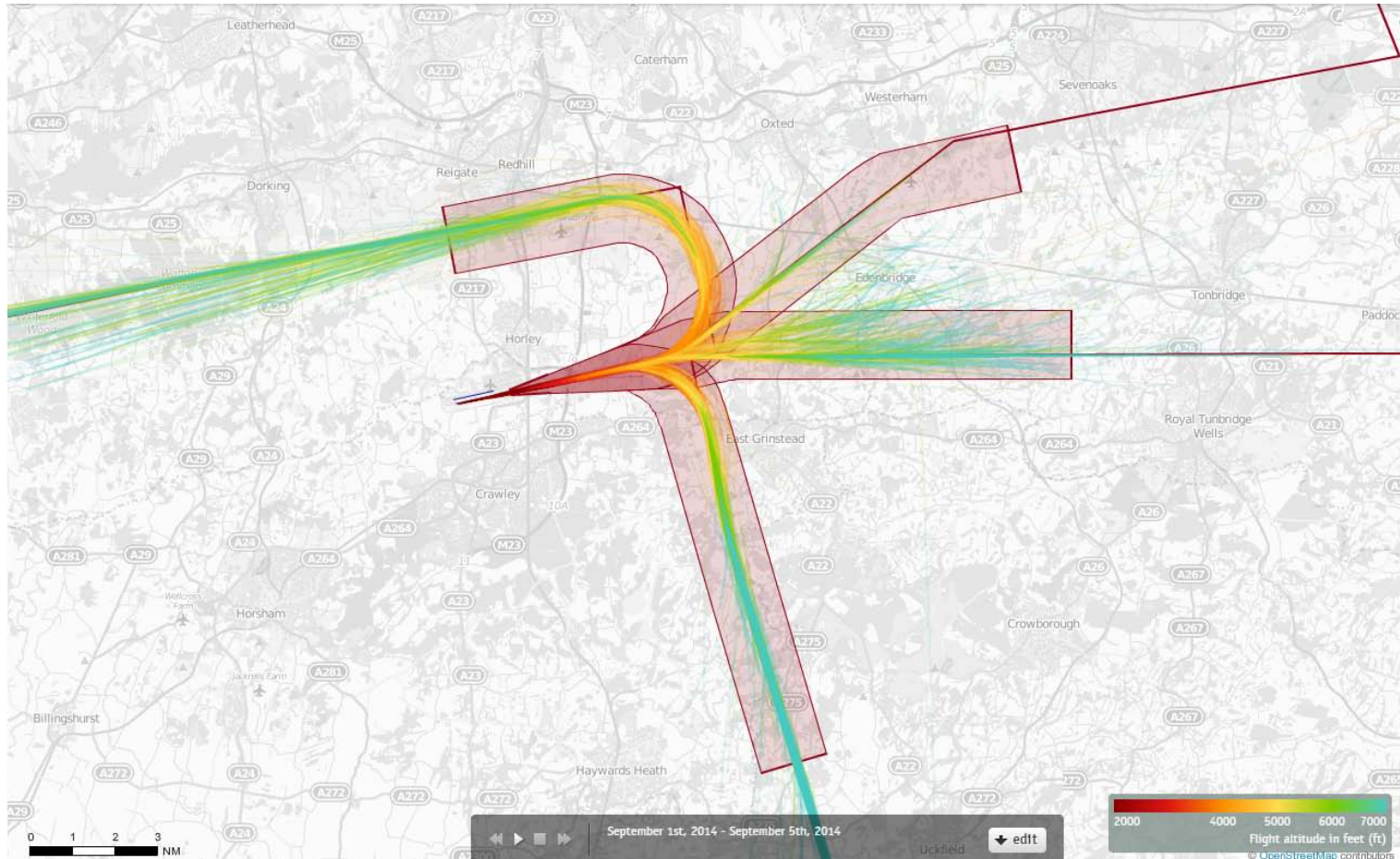


The pixels on the map show the altitude of aircraft as they pass over, displaying them as a colour used in the key. Aircraft at altitudes between those in the key (ie at 4240ft) will be shown as a blend of the colours above and below it in the key (ie a mix of 4000ft and 5000ft colours). Tracks cut off when at the maximum altitude on the key.

08 Departures 1st-5th September 2014

Altitude Map

555 Aircraft on SFD
417 Aircraft on CLN/DVR
122 Aircraft on LAM
354 Aircraft on KEN/SAM

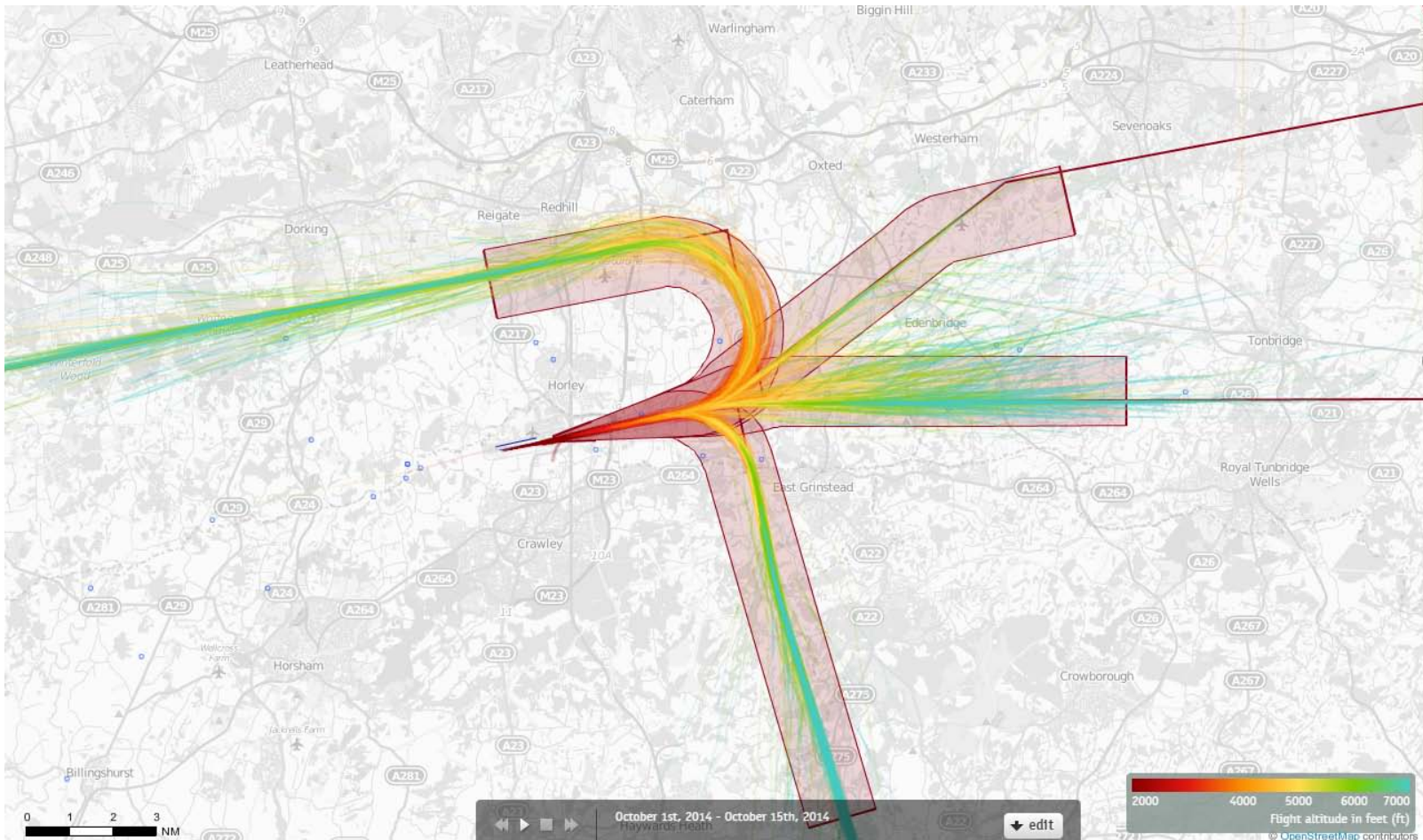


The pixels on the map show the altitude of aircraft as they pass over, displaying them as a colour used in the key. Aircraft at altitudes between those in the key (ie at 4240ft) will be shown as a blend of the colours above and below it in the key (ie a mix of 4000ft and 5000ft colours). Tracks cut off when at the maximum altitude on the key.

08 Departures 1st-14th October 2014

Altitude Map

350 Aircraft on SFD
419 Aircraft on CLN/DVR
111 Aircraft on LAM
341 Aircraft on KEN/SAM



The pixels on the map show the altitude of aircraft as they pass over, displaying them as a colour used in the key. Aircraft at altitudes between those in the key (ie at 4240ft) will be shown as a blend of the colours above and below it in the key (ie a mix of 4000ft and 5000ft colours). Tracks cut off when at the maximum altitude on the key.

08 Departures 1st-15th March 2014

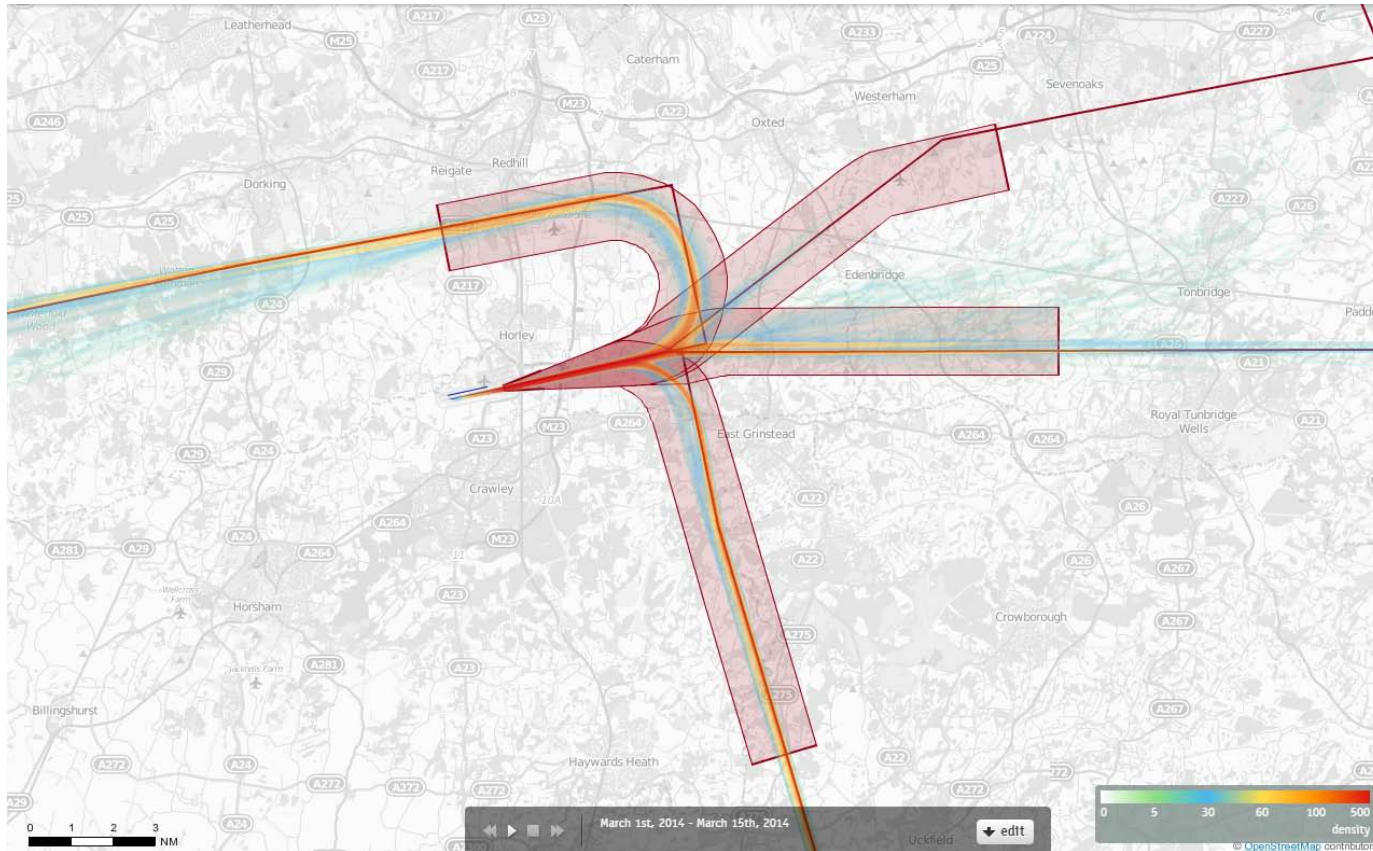
Density Map

282 Aircraft on SFD

325 Aircraft on CLN/DVR

174 Aircraft on LAM

384 Aircraft on KEN/SAM



Track density

Each track is drawn as a line which has a width of just a few pixels and each pixel on the screen counts how often a 'track line' comes across this pixel when drawing all the tracks.

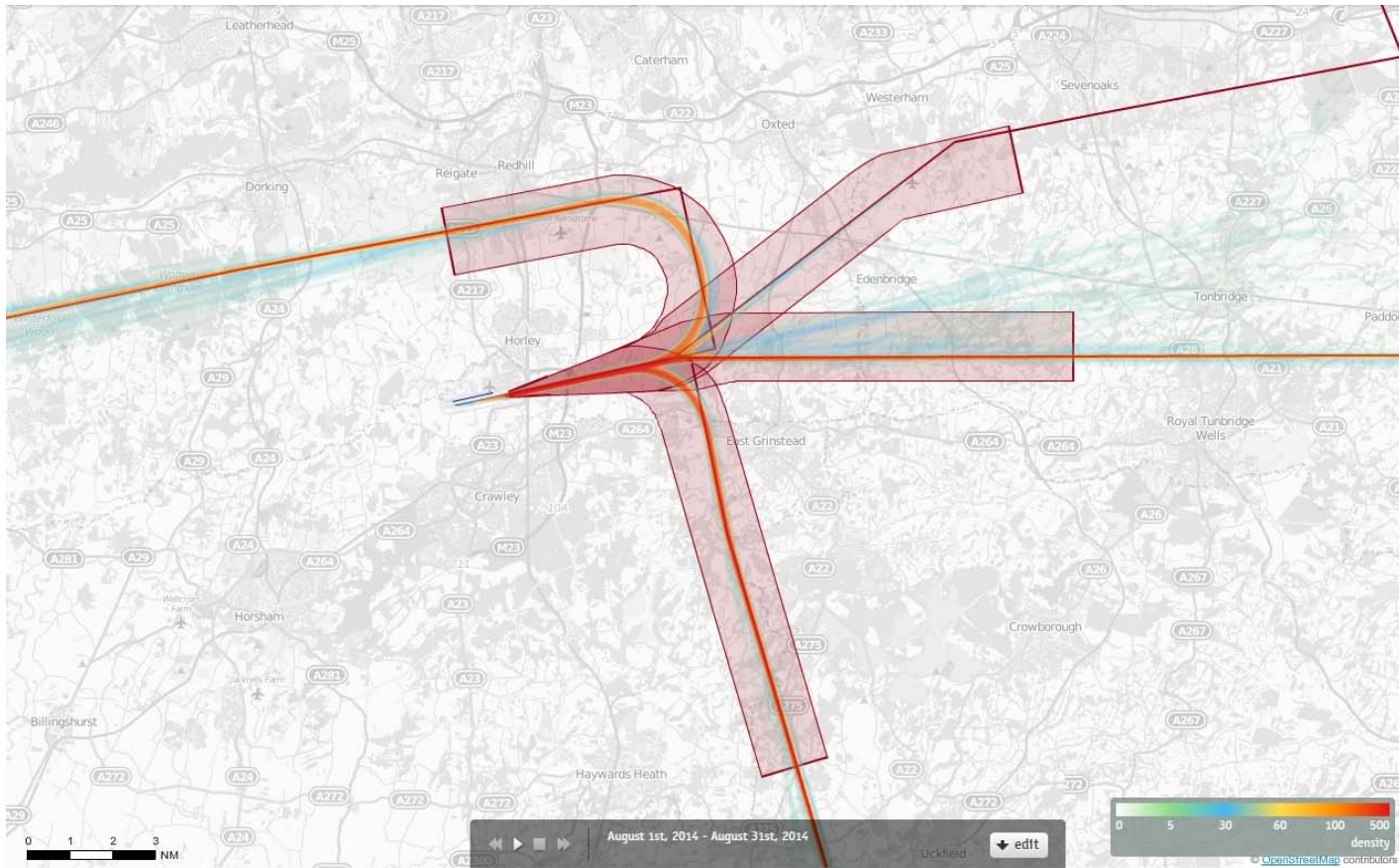
When all the tracks have been drawn, each pixel decides upon its colour based on the number of times a 'track line' has come across that pixel. The conversion from "count" to "colour" is guided by the numbers and colours given in the current Palette.

Counts in between are mapped to colours in between. If 100 were orange and 200 where red, then 150 would be coloured some orangy red.

08 Departures 1st-31st August 2014

Density Map

478 Aircraft on SFD
439 Aircraft on CLN/DVR
117 Aircraft on LAM
327 Aircraft on KEN/SAM



Track density

Each track is drawn as a line which has a width of just a few pixels and each pixel on the screen counts how often a 'track line' comes across this pixel when drawing all the tracks.

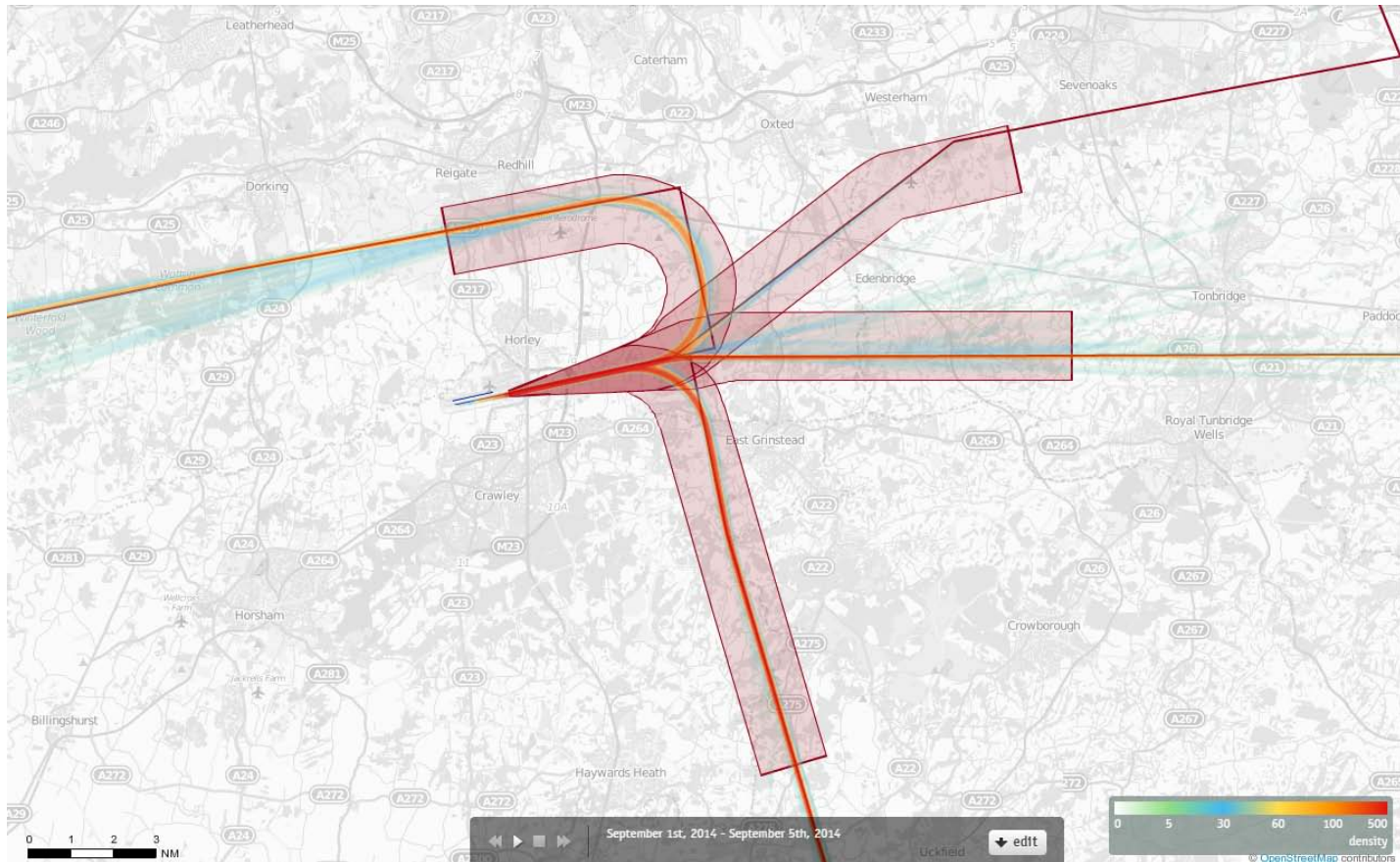
When all the tracks have been drawn, each pixel decides upon its colour based on the number of times a 'track line' has come across that pixel. The conversion from "count" to "colour" is guided by the numbers and colours given in the current Palette.

Counts in between are mapped to colours in between. If 100 were orange and 200 were red, then 150 would be coloured some orangy red.

08 Departures 1st-5th September 2014

Density Map

555 Aircraft on SFD
417 Aircraft on CLN/DVR
122 Aircraft on LAM
354 Aircraft on KEN/SAM



Track density

Each track is drawn as a line which has a width of just a few pixels and each pixel on the screen counts how often a 'track line' comes across this pixel when drawing all the tracks.

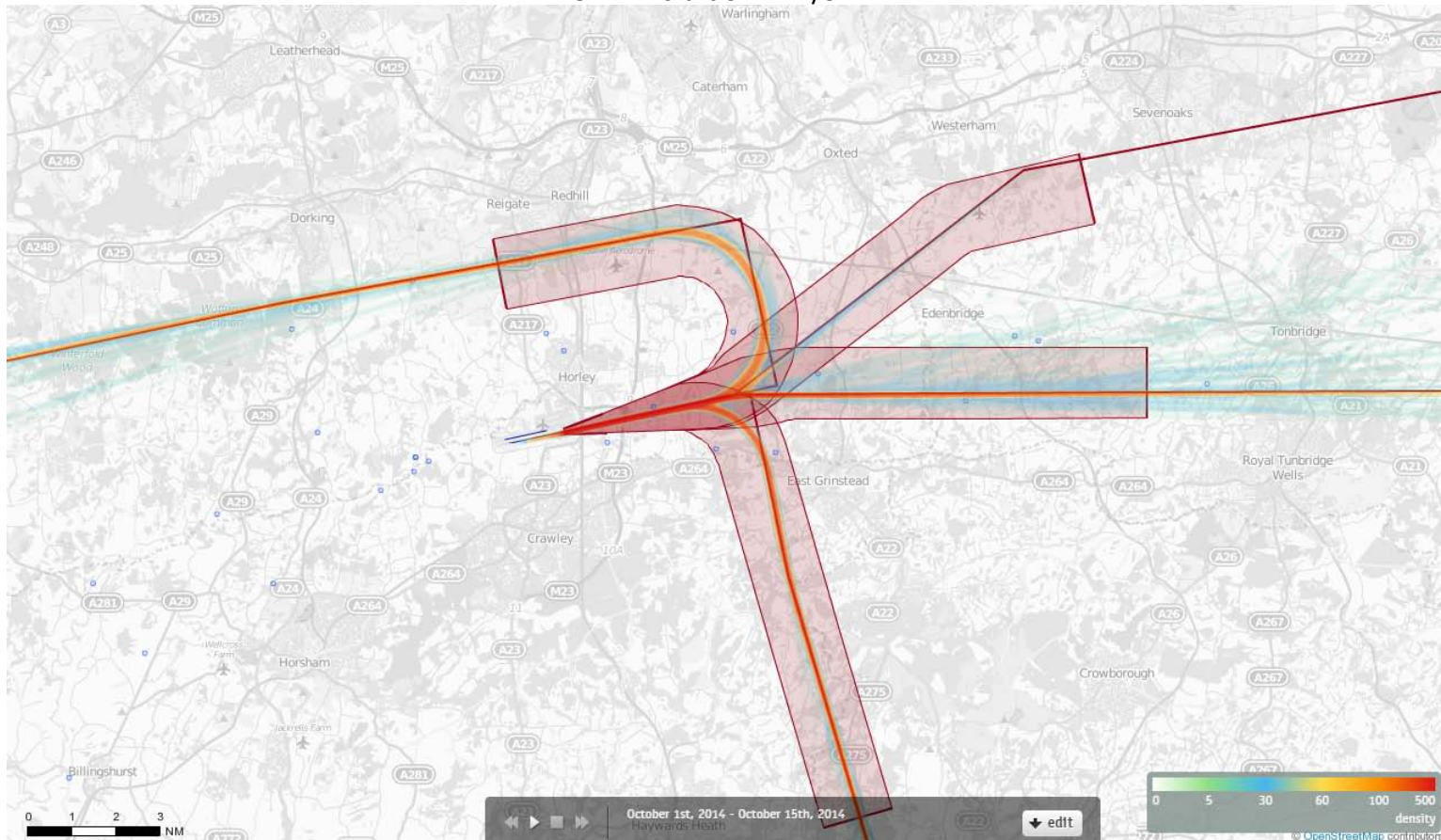
When all the tracks have been drawn, each pixel decides upon its colour based on the number of times a 'track line' has come across that pixel. The conversion from "count" to "colour" is guided by the numbers and colours given in the current Palette.

Counts in between are mapped to colours in between. If 100 were orange and 200 were red, then 150 would be coloured some orangy red.

08 Departures 1st-14th October 2014

Altitude Map

350 Aircraft on SFD
419 Aircraft on CLN/DVR
111 Aircraft on LAM
341 Aircraft on KEN/SAM



Track density

Each track is drawn as a line which has a width of just a few pixels and each pixel on the screen counts how often a 'track line' comes across this pixel when drawing all the tracks.

When all the tracks have been drawn, each pixel decides upon its colour based on the number of times a 'track line' has come across that pixel. The conversion from "count" to "colour" is guided by the numbers and colours given in the current Palette.

Counts in between are mapped to colours in between. If 100 were orange and 200 were red, then 150 would be coloured some orangy red.