

Aviation Trends

Quarter 1 2018



Contents

Introduction	2
1. Historical overview of traffic	3
a. Terminal passengers	4
b. Commercial flights	5
c. Cargo tonnage	6
2. Terminal passengers at UK airports	7
3. Passenger flights to and from UK airports	8
4. Terminal passengers at UK airports by origin/destination	9
5. Air cargo tonnes carried to and from UK airports	10
6. All commercial flights to and from UK airports	11
7. Punctuality of scheduled passenger flights to and from UK airports	12
a. On-time performance	12
b. Average delay	13
Explanatory notes	14

Introduction

Welcome to Aviation Trends. Every quarter we update key figures which summarise the levels of activity at the UK's airports.

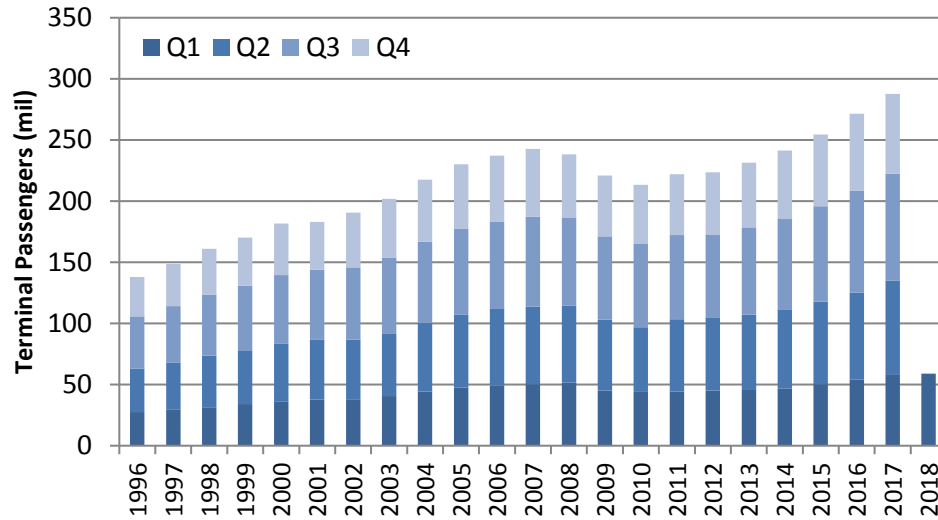
The Aviation Trends series is available at www.caa.co.uk/aviationtrends, part of Aviation Intelligence, the online home of the CAA's monthly airport and airline statistical publications. Please note that historic numbers may be subject to minor change as the result of prior period adjustments.¹ Due to rounding of figures, there may be an apparent slight discrepancy between the sum of the constituent items and the total as shown.

For a list of all statistics available on the CAA website, see www.caa.co.uk/data-and-analysis.

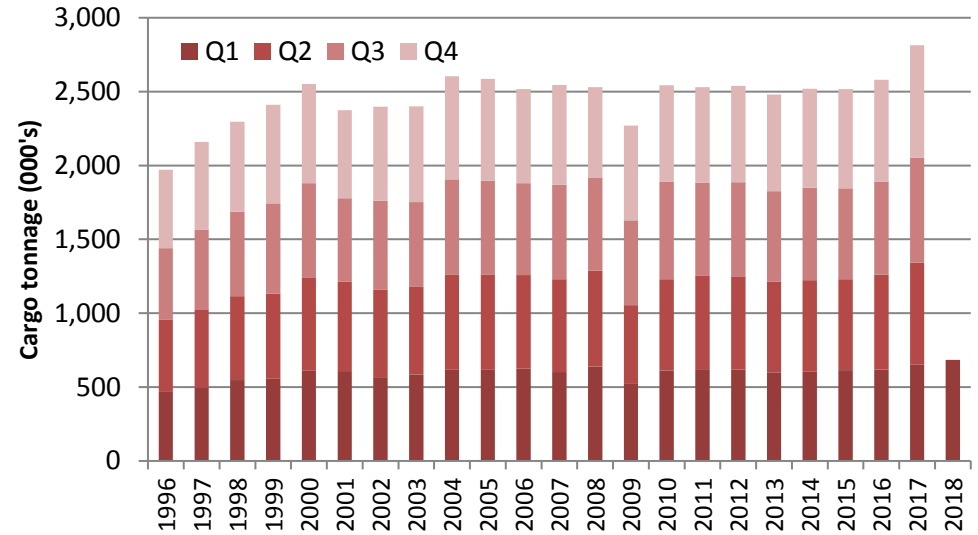
¹ Also, in editions of Aviation Trends prior to quarter 4 2008, all figures included activity at Channel Islands and Isle of Man airports. These islands are not formally part of the UK, and as we wish to present only the trends at UK airports, their figures are now excluded from the UK reporting airports, although travel between the UK and these airports is treated as domestic.

1. Historical overview of traffic see note 5 on p.14

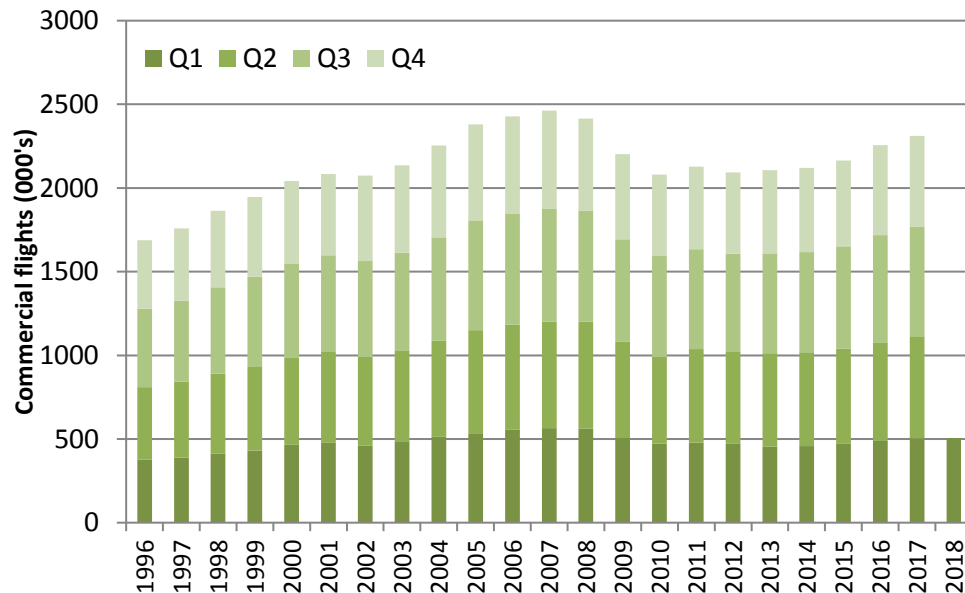
a. Terminal passengers



b. Cargo tonnage



c. Commercial flights



The three time-series charts on this page show both seasonal and annual trends in UK aviation activity for terminal passengers, commercial flights and cargo tonnage.

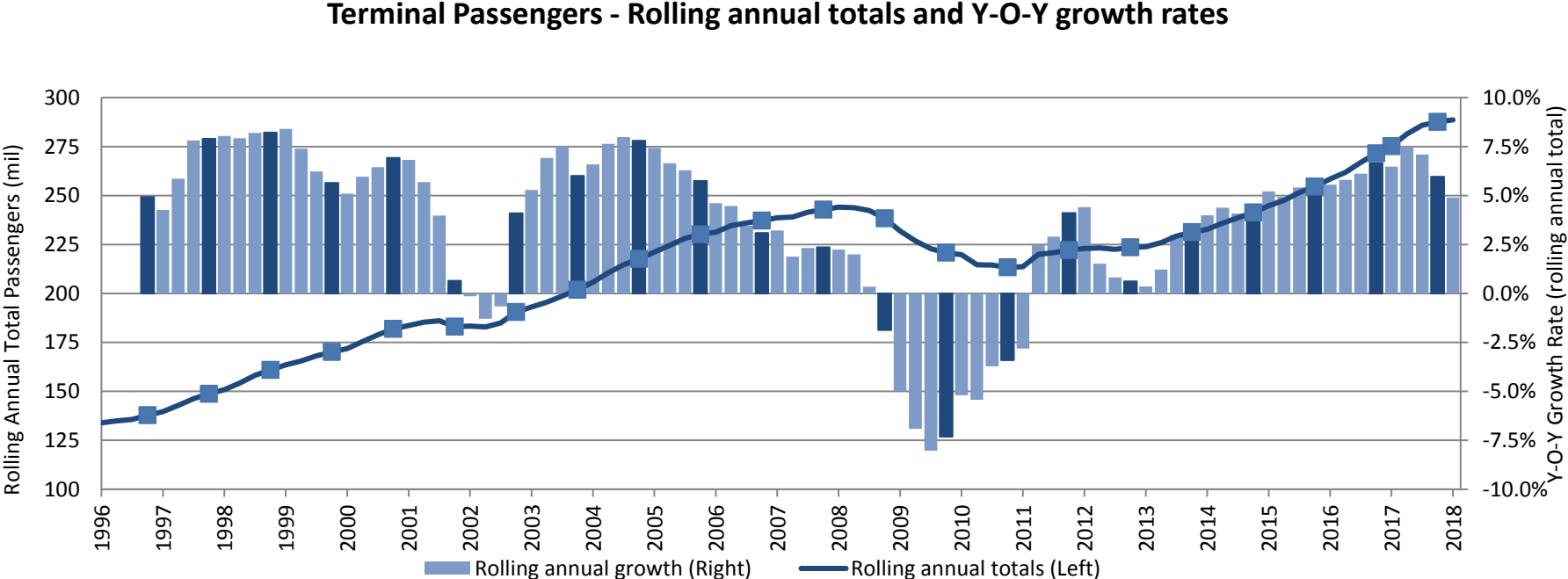
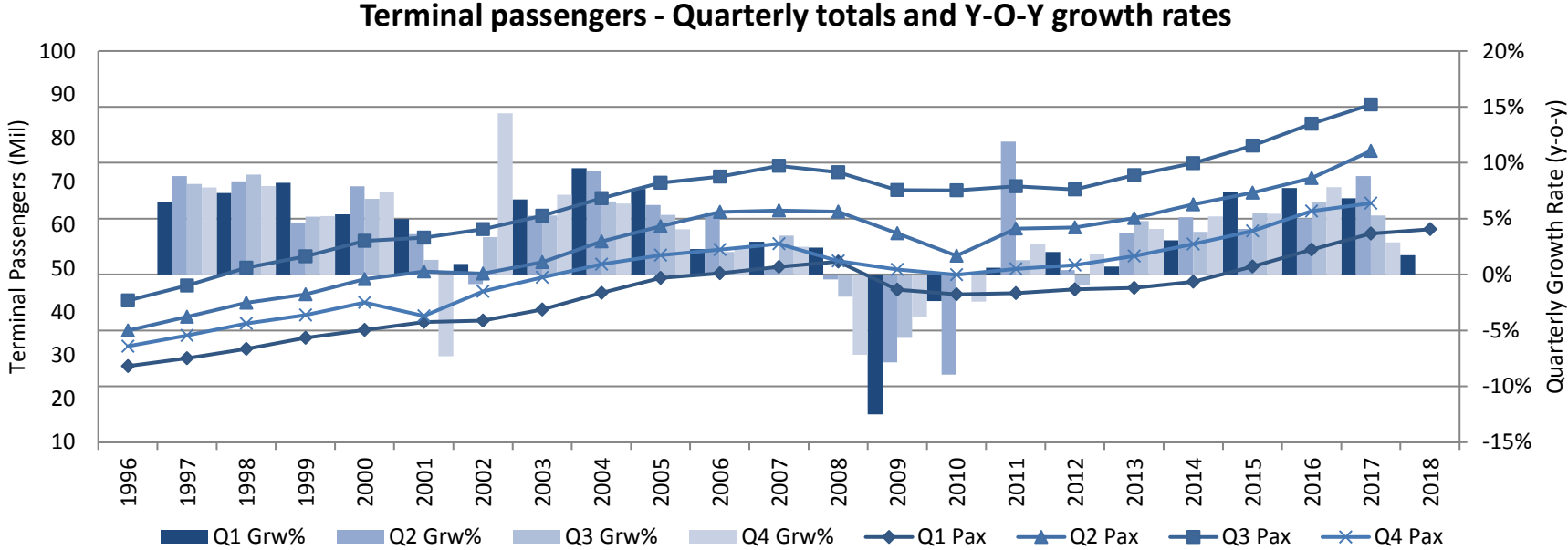
On pages 4 to 6, the top charts show traffic volume in each quarter (left axis), and the corresponding year-on-year quarterly growth rates (right axis). The bottom charts show the rolling annual total traffic in each quarter (left axis), and the year-on-year percentage growth of the rolling annual total (right axis). The highlighted data points indicate the annual traffic volumes and growth rates of the respective calendar years.

In Q1 2018, UK airports handled 59 million terminal passengers, representing 1.7% growth against the same quarter in the previous year and a new high in terms of the number of passengers flown in Q1 of any previous year. On a rolling year basis, terminal passengers also hit a new record (289m pax) in Q1 2018, surpassing the previous rolling 12-month high (288m pax) set in Q4 2017.

Q1 2018 saw 505 thousand commercial flights, representing 0.3% growth against the same quarter in the previous year. For the rolling 12 months to Q1 2018, commercial flights totalled 2.31 million, representing growth of 1.8% against the 12-month period the year before (Q2 2016 to Q1 2017).

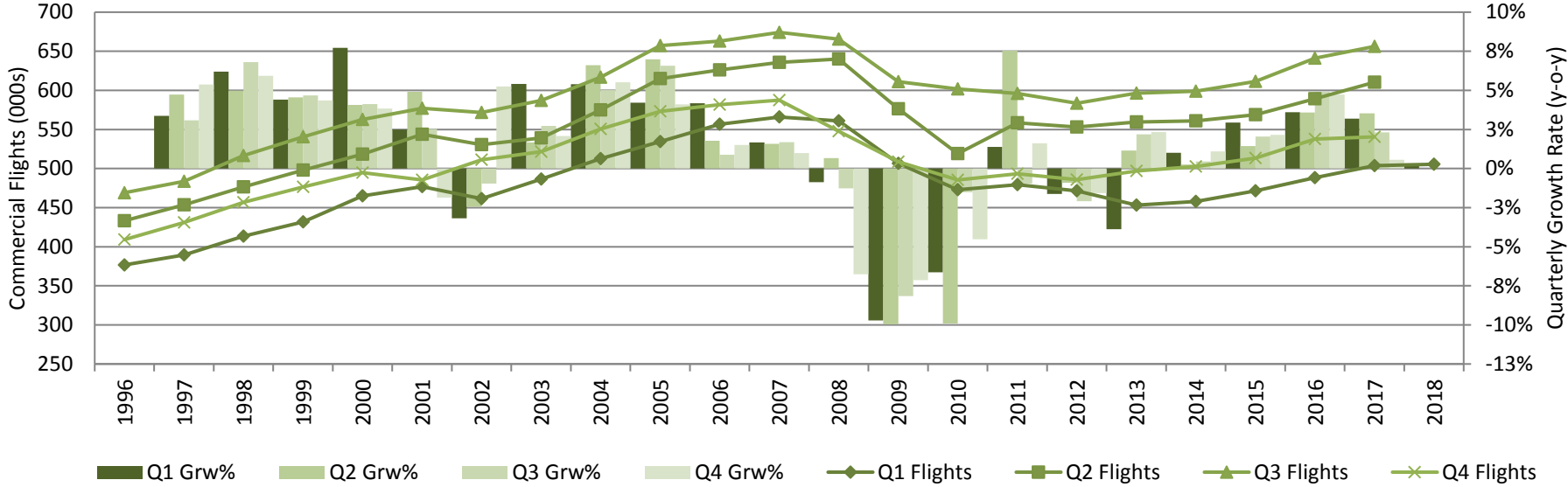
Q1 2018 also saw 684 thousand tonnes of cargo pass through UK airports, representing 4.6% growth on Q1 2017. For the rolling 12 months to Q1 2018, 2.84 million tonnes of cargo were handled at UK airports, up 8.8% on the 12-month period the year before (Q2 2016 to Q1 2017).

a. Terminal passengers

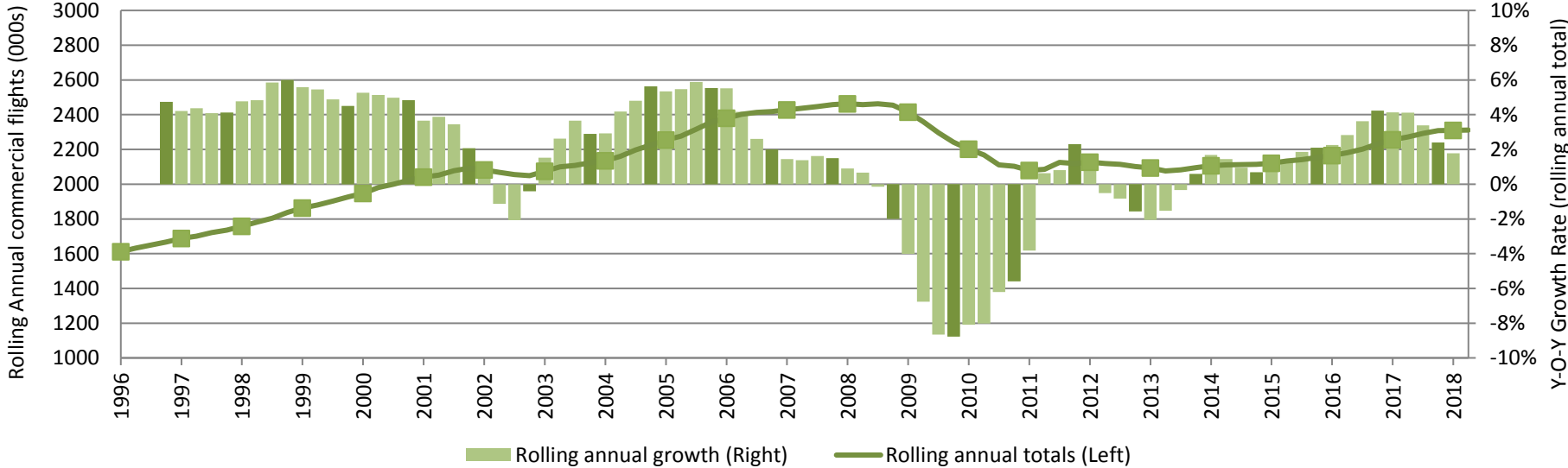


b. Commercial flights

Commercial Flights - Quarterly totals and Y-O-Y growth rates

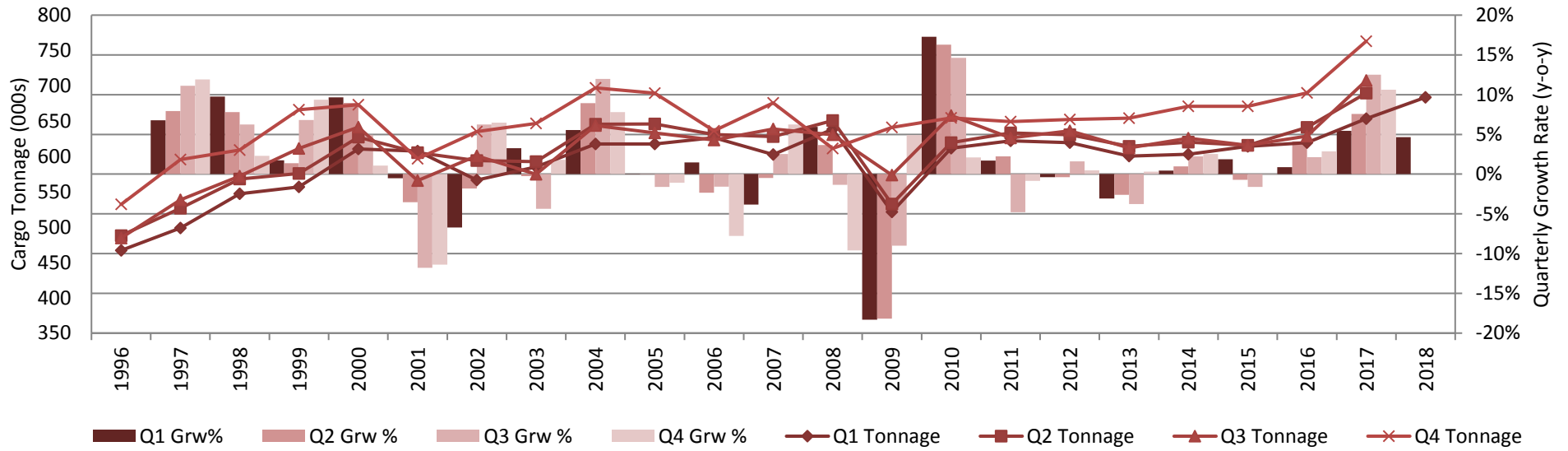


Commercial flights - Rolling annual totals and Y-O-Y growth rates

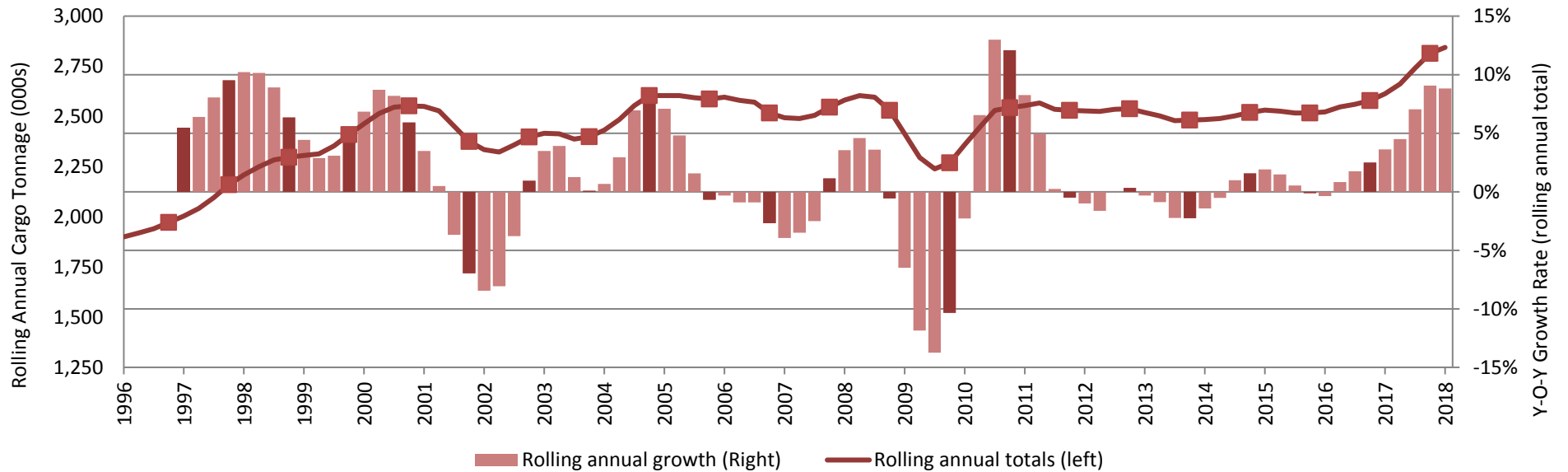


c. Cargo tonnage

Cargo Tonnage - Quarterly totals and Y-O-Y growth rates

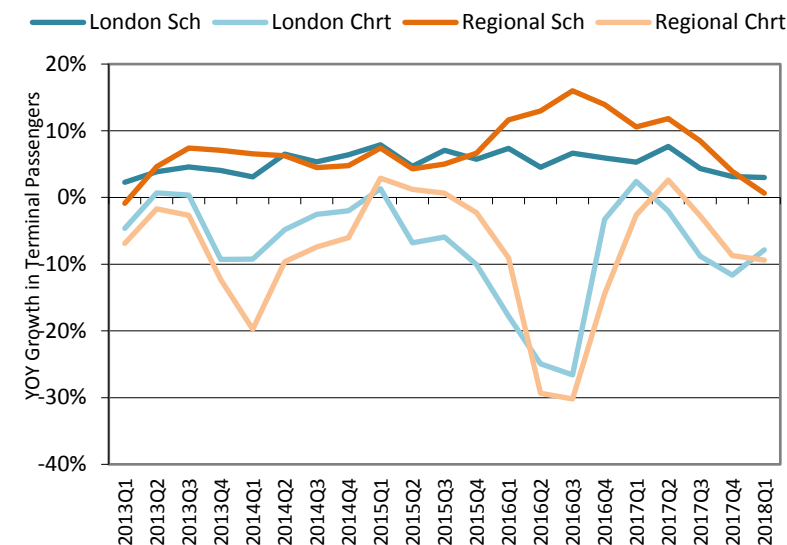


Cargo tonnage - Rolling annual totals and Y-O-Y growth rates

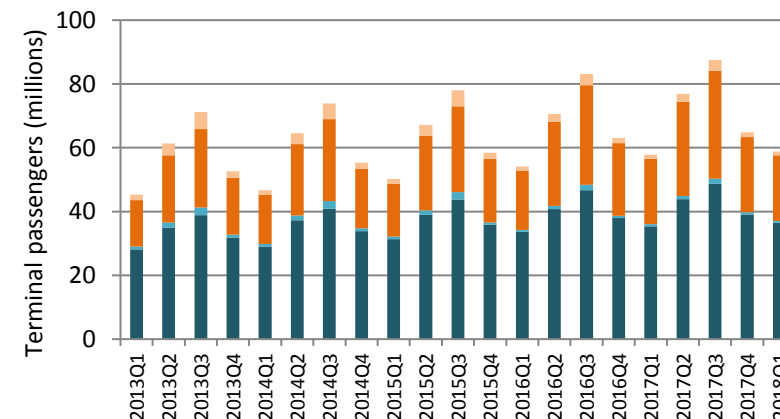


2. Terminal passengers at UK airports see note 5 on p.14

Pax (millions)	CURRENT QUARTER					ROLLING YEAR				
	Q1 2018		Q1 2017			Q2 17 – Q1 18		Q2 16 – Q1 17		
	Pax (Mil)	% of total	Pax (Mil)	% of total	% chg	Pax (Mil)	% of total	Pax (Mil)	% of total	% chg
London Airports	37.1	63%	36.1	62%	2.8%	172.0	60%	165.0	60%	4.3%
- Scheduled	36.4	62%	35.4	61%	3.0%	168.2	58%	160.8	59%	4.6%
- Charter	0.7	1%	0.7	1%	-7.9%	3.9	1%	4.2	2%	-7.5%
Regional Airports	21.8	37%	21.7	38%	0.1%	116.0	40%	109.5	40%	5.9%
- Scheduled	20.6	35%	20.4	35%	0.7%	107.5	37%	100.7	37%	6.7%
- Charter	1.2	2%	1.3	2%	-9.4%	8.6	3%	8.8	3%	-3.3%
All Airports	58.9	100%	57.8	100%	1.8%	288.0	100%	274.5	100%	4.9%
- Scheduled	57.0	97%	55.8	97%	2.1%	275.6	96%	261.5	95%	5.4%
- Charter	1.8	3%	2.0	3%	-8.9%	12.4	4%	13.0	5%	-4.7%



■ London Sch ■ London Chrt ■ Regional Sch ■ Regional Chrt



UK terminal passengers are those travellers who board or disembark an aircraft on a commercial flight at a reporting UK airport. The figures in this section therefore exclude transit passengers – those who remain on-board aircraft which land at a UK airport and then continue onto another destination.

In Q1 2018, London airports handled 2.8% more passengers, and regional airports 0.1% more than in the same quarter last year. Scheduled passengers grew by 2.1% overall. Charter traffic on the other hand declined by 8.9%.

For the rolling 12 months to Q1 2018, terminal passengers were 4.3% higher at London airports and 5.9% higher at regional airports, respectively compared to the previous rolling 12-month period (Q2 2016 to Q1 2017). Overall for the period, UK airports handled 288m passengers in total, up by 4.9% on the previous 12 months.

3. Passenger flights to and from UK airports see note 5 on p.14

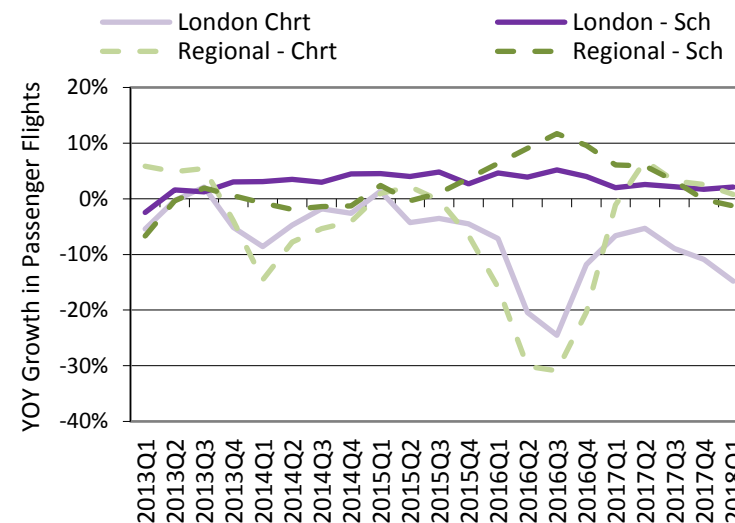
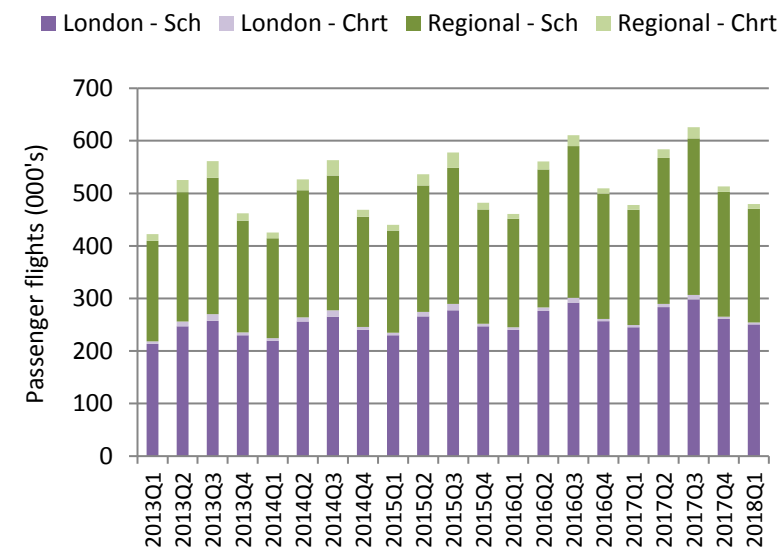
Flights (000's)	CURRENT QUARTER					ROLLING YEAR				
	Q1 2018		Q1 2017			Q2 17 – Q1 18		Q2 16 – Q1 17		
	Flights (000s)	% of total	Flights (000s)	% of total	% chg	Flights (000s)	% of total	Flights (000s)	% of total	% chg
London Airports	254.1	53%	249.5	52%	1.8%	1,115.6	51%	1,094.9	51%	1.9%
- Scheduled	250.5	52%	245.3	51%	2.1%	1,093.8	50%	1,070.8	50%	2.1%
- Charter	3.6	1%	4.2	1%	-14.8%	21.9	1%	24.1	1%	-9.4%
Regional Airports	225.8	47%	228.5	48%	-1.2%	1,087.3	49%	1,063.7	49%	2.2%
- Scheduled	216.5	45%	219.3	46%	-1.3%	1,030.3	47%	1,008.7	47%	2.1%
- Charter	9.3	2%	9.2	2%	0.8%	57.0	3%	55.0	3%	3.7%
All Airports	479.9	100%	478.0	100%	0.4%	2,202.9	100%	2,158.6	100%	2.1%
- Scheduled	467.0	97%	464.6	97%	0.5%	2,124.1	96%	2,079.5	96%	2.1%
- Charter	12.9	3%	13.4	3%	-4.1%	78.9	4%	79.1	4%	-0.3%

The figures in this table are for commercial passenger flights and thus exclude air freighter flights (those carrying cargo only).

In Q1 2018, the number of total passenger flights handled at UK airports increased by 0.4% to 480 thousand. There were 0.5% more scheduled flights and 4.1% fewer charter flights compared to the same quarter last year.

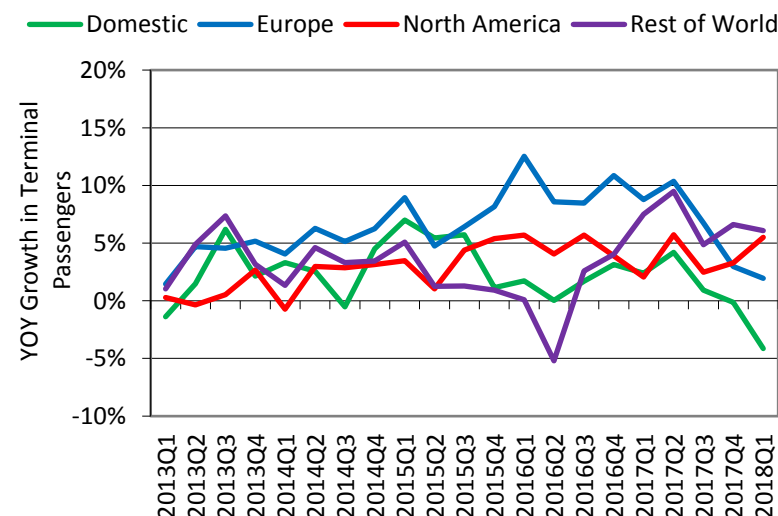
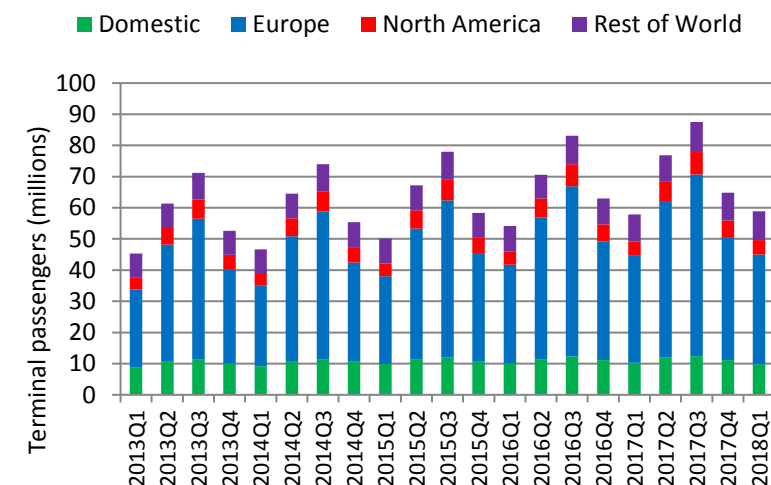
For the rolling 12 months to Q1 2018, the number of passenger flights handled by UK airports reached 2.2 million. The number of scheduled passenger flights was up by 2.1% whilst the number of charter passenger flights fell by 0.3% against the previous year.

Looking at the regional split in Q1 2018, there were 1.8% more passenger flights at the London airports and 1.2% less passenger flights at regional airports when compared to the same quarter last year. For the rolling 12 months to Q1 2018, the number of flights was up by 1.9% at London airports and up by 2.2% at regional airports.



4. Terminal passengers at UK airports by origin/destination see note 5 on p.14

Passengers (millions)	CURRENT QUARTER					ROLLING YEAR				
	Q1 2018		Q1 2017		% chg	Q2 17 – Q1 18		Q2 16 – Q1 17		% chg
	Pax (Mill)	% of total	Pax (Mill)	% of total		Pax (Mill)	% of total	Pax (Mill)	% of total	
Domestic	9.8	17%	10.3	18%	-4.1%	45.3	16%	45.1	16%	0.3%
- Scheduled	9.7	17%	10.2	18%	-4.3%	44.9	16%	44.9	16%	0.2%
- Charter	0.1	0%	0.1	0%	24.6%	0.3	0%	0.2	0%	33.2%
Europe	35.2	60%	34.5	60%	2.0%	183.0	64%	172.8	63%	5.9%
- Scheduled	33.8	57%	33.1	57%	2.2%	172.3	60%	161.8	59%	6.5%
- Charter	1.4	2%	1.4	2%	-4.1%	10.7	4%	11.0	4%	-2.2%
North America	4.6	8%	4.4	8%	5.5%	23.8	8%	22.8	8%	4.1%
- Scheduled	4.6	8%	4.4	8%	5.5%	23.6	8%	22.6	8%	4.1%
- Charter	0.0	0%	0.0	0%	78.0%	0.2	0%	0.2	0%	-1.2%
Rest of World	9.2	16%	8.7	15%	6.1%	36.0	12%	33.7	12%	6.6%
- Scheduled	8.9	15%	8.2	14%	8.1%	34.8	12%	32.1	12%	8.4%
- Charter	0.4	1%	0.5	1%	-27.7%	1.2	0%	1.6	1%	-27.6%
All Airports	58.9	100%	57.8	100%	1.8%	288.0	100%	274.5	100%	4.9%
- Scheduled	57.0	97%	55.8	97%	2.1%	275.6	96%	261.5	95%	5.4%
- Charter	1.8	3%	2.0	3%	-8.7%	12.4	4%	13.0	5%	-4.7%

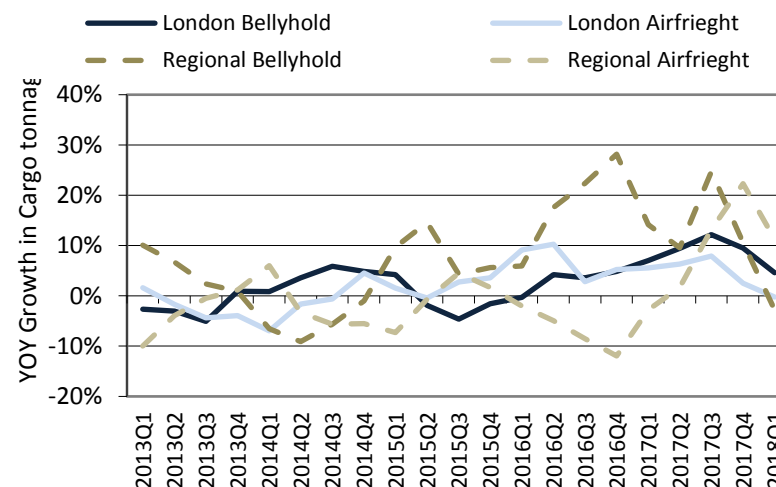
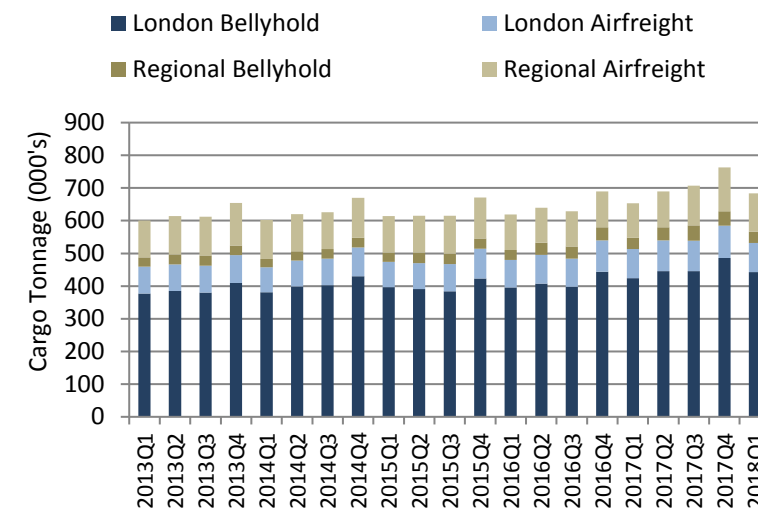


Compared to the same quarter last year, total passengers (excluding those going to/from North Sea oil rigs) increased by 1.8% across all UK reporting airports in Q1 2018. The rest of the world saw the strongest growth (+6.1%), while the Domestic market saw the weakest growth (-4.1%). There were 5.5% more passengers travelling on North American routes and 2% more passengers travelling to Europe.

For the rolling 12 months to Q1 2018, the total number of passengers was up by 4.9%. This was made up of an increase of 5.9%, 4.1% and 0.3% and 6.6% of passengers travelling to and from Europe, North America, domestic and rest of the world respectively.

5. Air cargo tonnes carried to and from UK airports see note 5 on p.14

Tonnes (000's)	CURRENT QUARTER					ROLLING YEAR				
	Q1 2018		Q1 2017			Q2 17 – Q1 18		Q2 16 – Q1 17		
	Tonnes (000's)	% of total	Tonnes (000's)	% of total	% chg	Tonnes (000's)	% of total	Tonnes (000's)	% of total	% chg
Cargo only flights	206.7	30%	194.9	30%	6.0%	856.6	30%	789.6	30%	8.5%
- London	88.9	13%	89.1	14%	-0.2%	373.9	13%	359.3	14%	4.1%
- Regional	117.7	17%	105.8	16%	11.3%	482.7	17%	430.3	16%	12.2%
Bellyhold cargo	476.7	70%	458.1	70%	4.1%	1,986.1	70%	1,821.3	70%	9.0%
- London	443.2	65%	423.6	65%	4.6%	1,820.8	64%	1,672.1	64%	8.9%
- Regional	33.5	5%	34.4	5%	-2.8%	165.3	6%	149.2	6%	10.8%
Total cargo	683.4	100%	653.0	100%	4.6%	2,842.7	100%	2,610.9	100%	8.9%
- London	532.1	78%	512.8	79%	3.8%	2,194.7	77%	2,031.5	78%	8.0%
- Regional	151.2	22%	140.2	21%	7.8%	648.0	23%	579.5	22%	11.8%



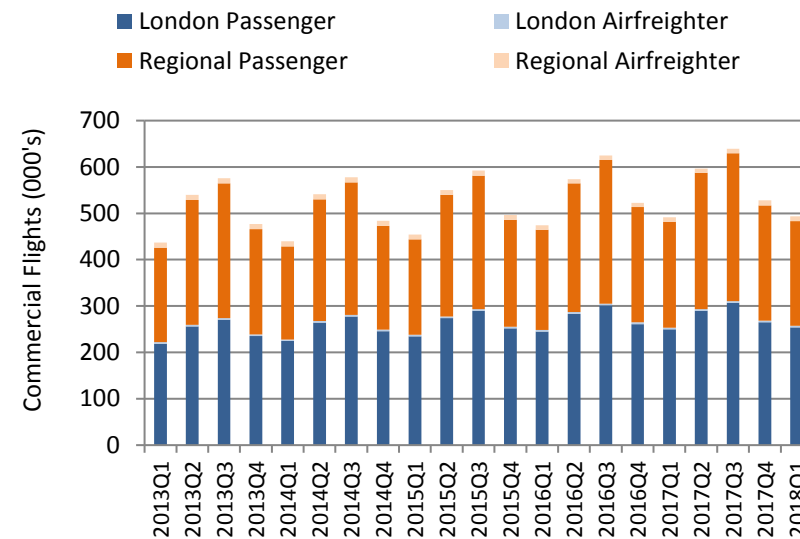
Air cargo – freight and mail – is transported into and out of the UK on air freighters and in the bellyhold of passenger aircraft.

In Q1 2018, total cargo tonnage at UK airports grew by 4.6% compared with the same quarter last year. At London airports cargo tonnage grew by 3.8% while cargo tonnage at regional airports increased by 7.8%. Air freighter tonnage increased by 6.0% whilst bellyhold cargo tonnage grew by 4.1% over the same period.

For the rolling 12 months to Q1 2018, total cargo tonnage handled at UK airports grew by 8.9% compared with the previous 12 month period (Q2 2016 to Q1 2017). London airports grew by 8.0% while regional airports grew by 11.8%. In this period bellyhold cargo increased by 9.0% while air freighter grew by 8.5%.

6. All commercial flights to and from UK airports see note 5 on p.14

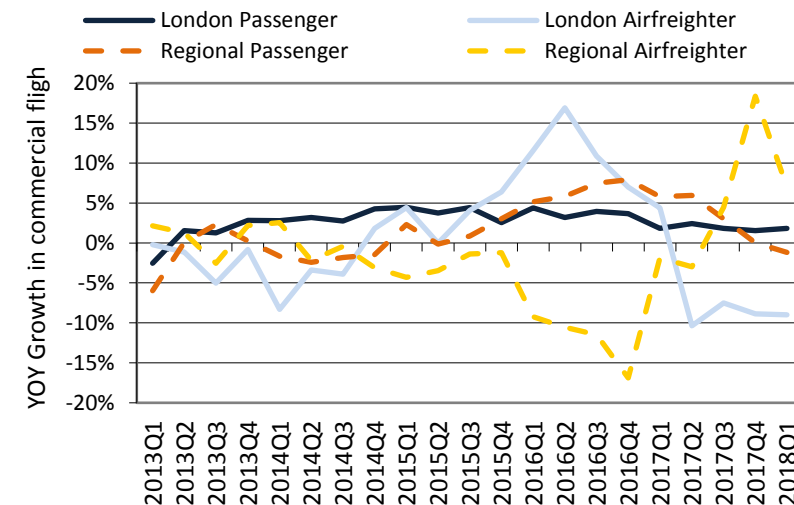
Flights (000s)	CURRENT QUARTER					ROLLING YEAR				
	Q1 2018		Q1 2017			Q2 17 – Q1 18		Q2 16 – Q1 17		
	Flights (000's)	% of total	Flights (000's)	% of total	% chg	Flights (000's)	% of total	Flights (000's)	% of total	% chg
Airfreighter	13.6	3%	13.2	3%	2.3%	53.8	2%	52.7	2%	2.0%
- London	3.5	1%	3.9	1%	-9.0%	14.2	1%	15.6	1%	-8.9%
- Regional	10.0	2%	9.4	2%	7.0%	39.5	2%	37.1	2%	6.6%
Passenger flights	479.9	97%	478.0	97%	0.4%	2,203.2	98%	2,159.0	98%	2.0%
- London	254.1	51%	249.5	51%	1.8%	1,115.8	49%	1,094.9	50%	1.9%
- Regional	225.8	46%	228.5	47%	-1.2%	1,087.5	48%	1,064.2	48%	2.2%
Total flights	493.4	100%	491.3	100%	0.4%	2,257.0	100%	2,211.8	100%	2.0%
- London	257.6	52%	253.4	52%	1.7%	1,130.0	50%	1,110.5	50%	1.8%
- Regional	235.9	48%	237.9	48%	-0.9%	1,127.0	50%	1,101.2	50%	2.3%



The number of commercial flights at reporting UK airports is a measure of commercial aviation activity in the UK. It includes both passenger and cargo flights, but excludes military flights, general aviation, and aircraft that pass through UK airspace without landing.

The total number of commercial flights in the UK was up 0.4% in Q1 2018 compared to the same quarter last year – the combined effect of a 0.4% increase in the number of passenger flights and a 2.3% increase in the number of freighter flights. Overall for the same quarter, London airports and regional airports grew at 1.7% and -0.9% respectively.

For the rolling 12 months to Q1 2018, the total number of commercial flights reached 2.26m, up by 2.0% compared with the previous rolling 12 months (Q2 2016 to Q1 2017). Commercial flights at London airports rose by 1.8% while at regional airports the increase was 2.3%.



7. Punctuality of scheduled passenger flights to and from UK airports see note 6 on p.14

a. On-time performance

Matched scheduled passenger flights (000s), % of flights on-time	Q1 2018	
	Flights (000s)	% on-time
London	250.1	75%
Gatwick	57.0	78%
Heathrow	112.9	77%
London City	18.7	73%
Luton	21.7	73%
Stansted	36.2	68%
Regional	204.0	76%
Aberdeen	12.2	72%
Belfast City (George Best)	8.4	82%
Belfast International	8.4	76%
Birmingham	20.6	74%
Bournemouth	0.5	80%
Bristol	12.6	72%
Cardiff Wales	3.0	78%
Doncaster Sheffield	1.2	79%
Durham Tees Valley	1.2	71%
East Midlands International	5.3	79%
Edinburgh	24.6	77%
Exeter	2.2	76%
Glasgow	18.3	75%
Jersey	4.4	75%
Leeds Bradford	6.0	75%
Liverpool (John Lennon)	7.8	83%
Manchester	38.0	76%
Newcastle	8.2	76%
Southampton	8.5	77%
Grand Total	444.2	75%

Starting from January 2018 we have introduced a new method for calculating the measure of punctuality to enhance the quality and improve the relevance to users of the data. Consequently, we are currently unable to report year-on-year changes in on-time performance and average delay. We will resume reporting year-on-year changes in Q1 2019 once we have sufficient data to do so.

Punctuality of arriving and departing passenger flights is measured by comparing actual and planned times of operation. The data covers 24 airports.

On-time performance is defined as the proportion of flights arriving or departing early or up to and including 15 minutes late.

b. Average delay

Matched scheduled passenger flights (000s), Average Delay (min)	Q4 2017	
	Flights (000s)	Avg. Delay (min)
London	250.1	14
Gatwick	57.0	13
Heathrow	112.9	12
London City	18.7	13
Luton	21.7	16
Stansted	36.2	16
Regional	204.0	14
Aberdeen	12.2	16
Belfast City (George Best)	8.4	9
Belfast International	8.4	13
Birmingham	20.6	16
Bournemouth	0.5	11
Bristol	12.6	16
Cardiff Wales	3.0	12
Doncaster Sheffield	1.2	12
Durham Tees Valley	1.2	15
East Midlands International	5.3	12
Edinburgh	24.6	11
Exeter	2.2	14
Glasgow	18.3	13
Jersey	4.4	16
Leeds Bradford	6.0	13
Liverpool (John Lennon)	7.8	10
Manchester	38.0	14
Newcastle	8.2	13
Southampton	8.5	13
Grand Total	444.2	14

Average delay per flight across the 24 monitored airports was 14 minutes for Q1 2018.

The airport with the shortest average delay in Q1 2018 was Belfast City (9 minutes). The longest average delay was seen at Luton, Stansted, Aberdeen, Birmingham, Bristol and Jersey (16 minutes).

Explanatory notes

1. The Civil Aviation Authority data is prepared with the co-operation of the United Kingdom airport and airline operators. The assistance from all these organisations is gratefully acknowledged.
2. The information contained in this report has been compiled from various sources and it is not possible for the CAA to check and verify whether it is accurate and correct, nor does the CAA undertake to do so. Consequently the CAA cannot accept any liability for any financial loss caused by any person's reliance on it.
3. More detailed data are available from the Civil Aviation Authority website at the following address - www.caa.co.uk/aviationintelligence.
4. The CAA is the UK's specialist aviation regulator whose regulatory activities range from ensuring the aviation industry meets the highest safety standards to preventing holidaymakers from being stranded abroad because of tour operator insolvency.
5. Explanatory notes for Parts 1 to 6:

Notes	Applicable to Part					
	1	2	3	4	5	6
Tables and charts are generated from data in CAA Airport Statistics.	✓	✓	✓	✓	✓	✓
All data excludes the activity of Air Taxis – those aircraft with maximum take-off weights of less than 15 tonnes flying non-scheduled services.	✓	✓	✓	✓	✓	✓
London airports are Heathrow, Gatwick, Stansted, Luton, London City and Southend. Regional Airports are all other UK airports, this category includes the Channel Island Airports – Jersey, Guernsey, and Alderney – and the Isle of Man, which are not formally part of the UK.	✓	✓	✓	✓	✓	✓
Exclude traffic to and from North Sea oilrigs.		✓	✓	✓	✓	✓
Terminal passengers are those commencing their journey or connecting between flights at the airport, but exclude transit passengers who do not disembark.	✓	✓		✓		
Cargo comprises mail and freight.	✓				✓	✓
For the purposes of this report, World Areas are defined as follows: Domestic - the United Kingdom, the Channel Islands and the Isle of Man (these numbers are not adjusted for the double counting which occurs when both airports report arriving and departing passengers to the CAA); Europe - geographical Europe including Turkey and the former Soviet Union states; North America - USA, Canada and Puerto Rico; Rest of World - all other countries.				✓		
A destination is defined to be where a passenger boards or alights the aircraft on which they arrived or departed from the reporting airport; it is not necessarily the first or last stop of a multi-sector flight.				✓		

6. Explanatory notes for Part 7:

- In these punctuality data, 'delay' is recorded as the difference between an aircraft's scheduled and actual arrival or departure time at the airport terminal. It does not therefore measure any delay, such as that due to congestion, which has already been allowed for in the planned flight times of the service.
- Average delay is the total minutes of delay recorded by all flights (with early arriving flights counted as zero delay) divided by the total number of flights monitored.
- Further information and supporting notes on the methodology used to calculate delays can be accessed here: <http://www.caa.co.uk/Data-and-analysis/UK-aviation-market/Flight-reliability/Datasets/Punctuality-data/Punctuality-statistics-notes>