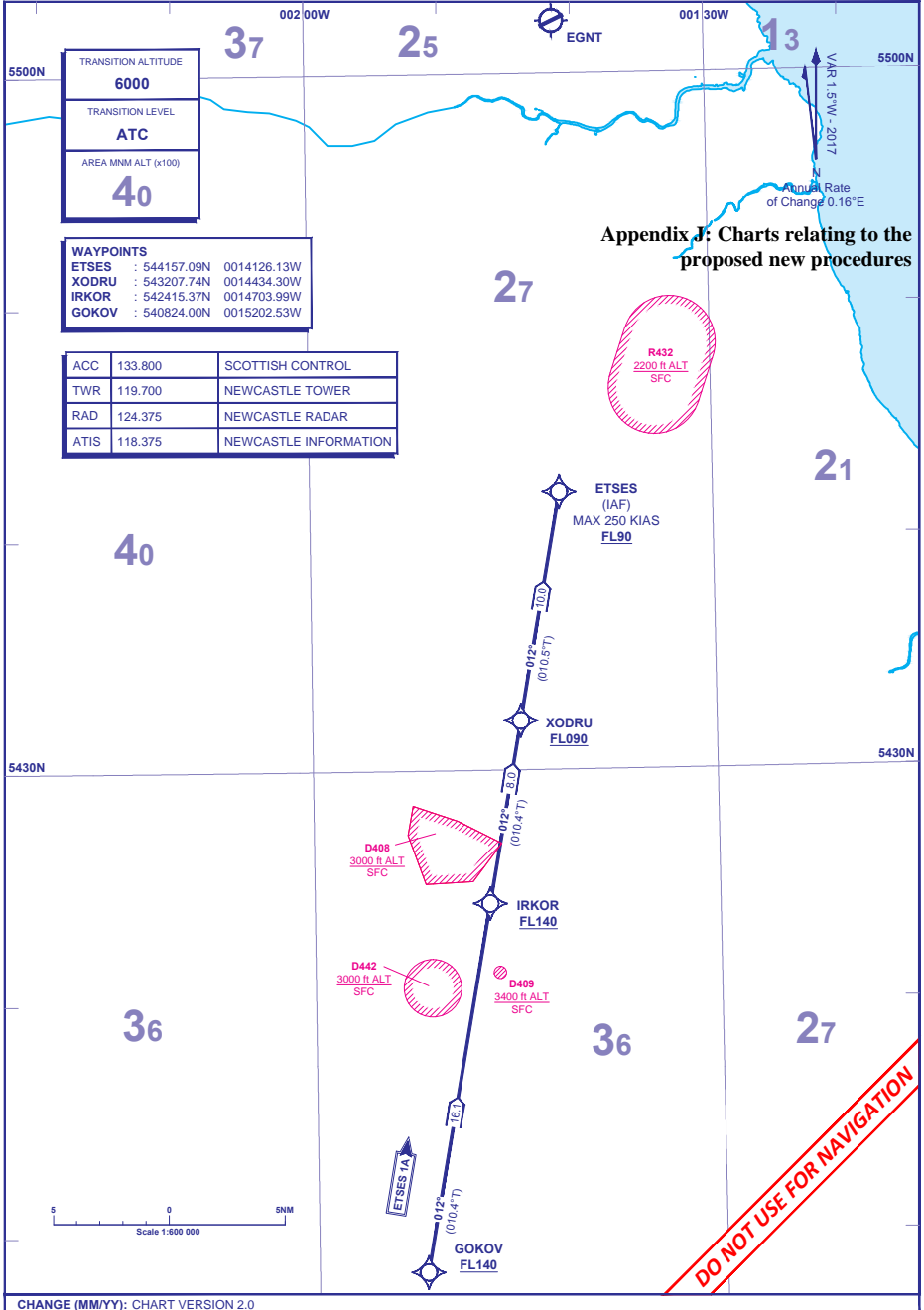


**RNAV 1 (GNSS)  
STANDARD ARRIVAL CHART -  
INSTRUMENT (STAR) - ICAO**

DISTANCES IN NAUTICAL MILES  
TRACKS ARE MAGNETIC  
ALTITUDES AND ELEVATIONS ARE IN FEET

**NEWCASTLE**  
RWY 07/25  
**ETSES 1A**



**Appendix J: Charts relating to the proposed new procedures**

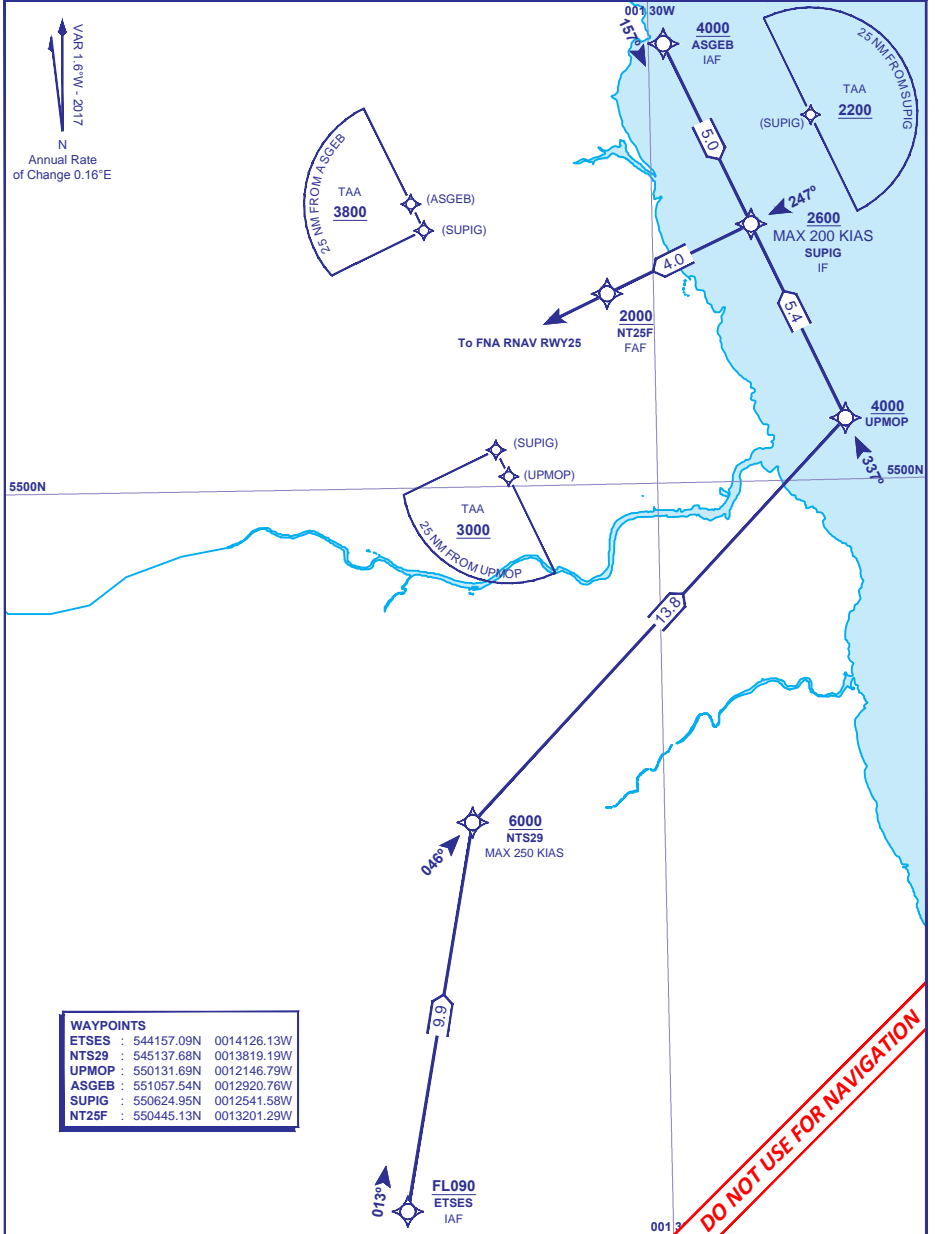
CHANGE (MM/YY): CHART VERSION 2.0

AERO INFO DATE DD MMM YYYY

INSTRUMENT APPROACH CHART - ICAO

NEWCASTLE

 MSA 25NM ARP	APP 124.375	NEWCASTLE APPROACH	AD ELEVATION 266	NEWCASTLE /NA RNAV (GNSS) <b>RWY 25</b> (ACFT CAT A,B,C,D)
	TWR 119.700	NEWCASTLE TOWER	THR ELEVATION 239	
	121.725	NEWCASTLE GROUND	OBSTACLE ELEVATION	MIN TEMP -20°C
	RAD 124.375, 125.825	NEWCASTLE RADAR	1506 AMSL (1287) (ABOVE THR)	TRANSITION ALTITUDE <b>6000</b>
	ATIS 118.375	NEWCASTLE ATIS	BEARINGS ARE MAGNETIC	



WAYPOINTS	
ETSES	: 544157.09N 0014126.13W
NTS29	: 545137.68N 0013819.19W
UPMOP	: 550131.69N 0012146.79W
ASGEB	: 551057.54N 0012920.76W
SUPIG	: 550624.95N 0012541.58W
NT25F	: 550445.13N 0013201.29W

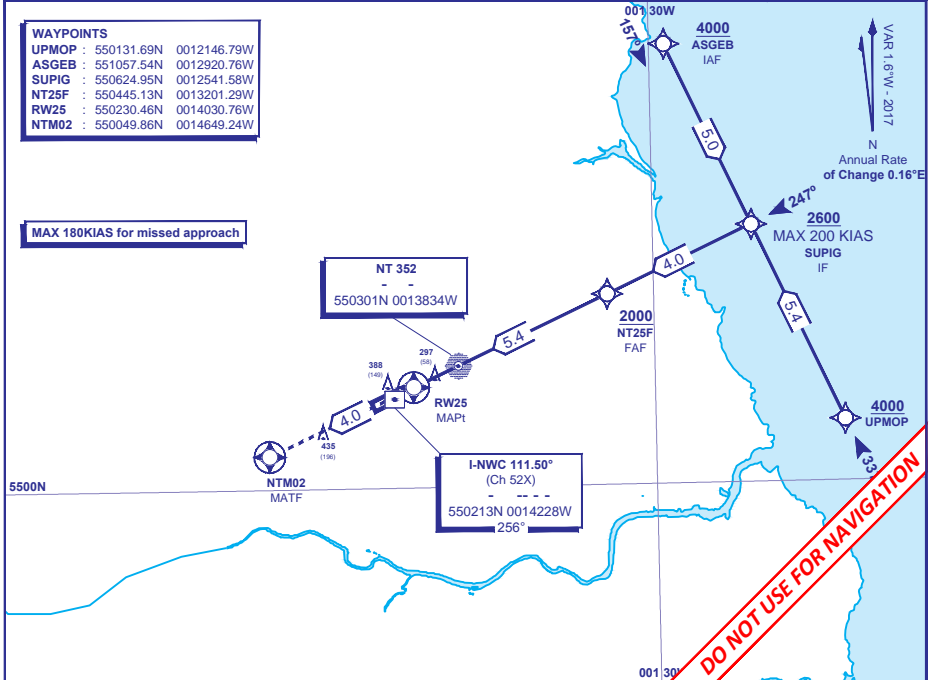
CHANGE (MM/YY): CHART VERSION 2.0

AERO INFO DATE DD MMM YY

INSTRUMENT APPROACH CHART - ICAO

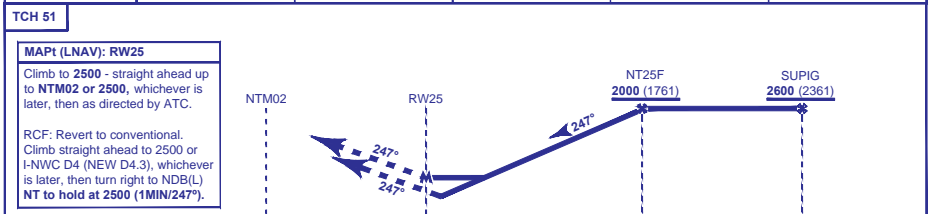
NEWCASTLE

	APP 124.375	NEWCASTLE APPROACH	AD ELEVATION 266	FNA RNAV (GNSS) <b>RWY 25</b> (ACFT CAT A,B,C,D)
	TWR 119.700	NEWCASTLE TOWER	THR ELEVATION 239	
	121.725	NEWCASTLE GROUND	OBSTACLE ELEVATION	EGNOS CH 87385 E25A
	RAD 124.375, 125.825	NEWCASTLE RADAR	1506 AMSL (1287) (ABOVE THR)	MIN TEMP -20°C
	ATIS 118.375	NEWCASTLE ATIS	BEARINGS ARE MAGNETIC	TRANSITION ALTITUDE 6000



RECOMMENDED PROFILE VNAV - VERTICAL PATH ANGLE 3.0°, 318 FT/NM, LNAV - Gradient 5.24 , 318 FT/NM

NM to RW25	5	4	3	2	1
ALT (HGT)	1880 (1641)	1560 (1321)	1240 (1001)	930 (691)	610 (371)



Aircraft Category	A	B	C	D	Rate of descent	G/S KT	160	140	120	100	80
OCA (OCH)	LPV	439 (200)	439 (200)	439 (200)	439 (200)	FT/MIN	850	740	640	530	420
	LNAV/VNAV	489 (250)	489 (250)	539 (300)	549 (310)						
	LNAV	610 (371)	610 (371)	610 (371)	610 (371)						
VM(C)OCA (OCH AAL)	Total Area	750 (485)	830 (565)	1040 (775)	1040 (775)						

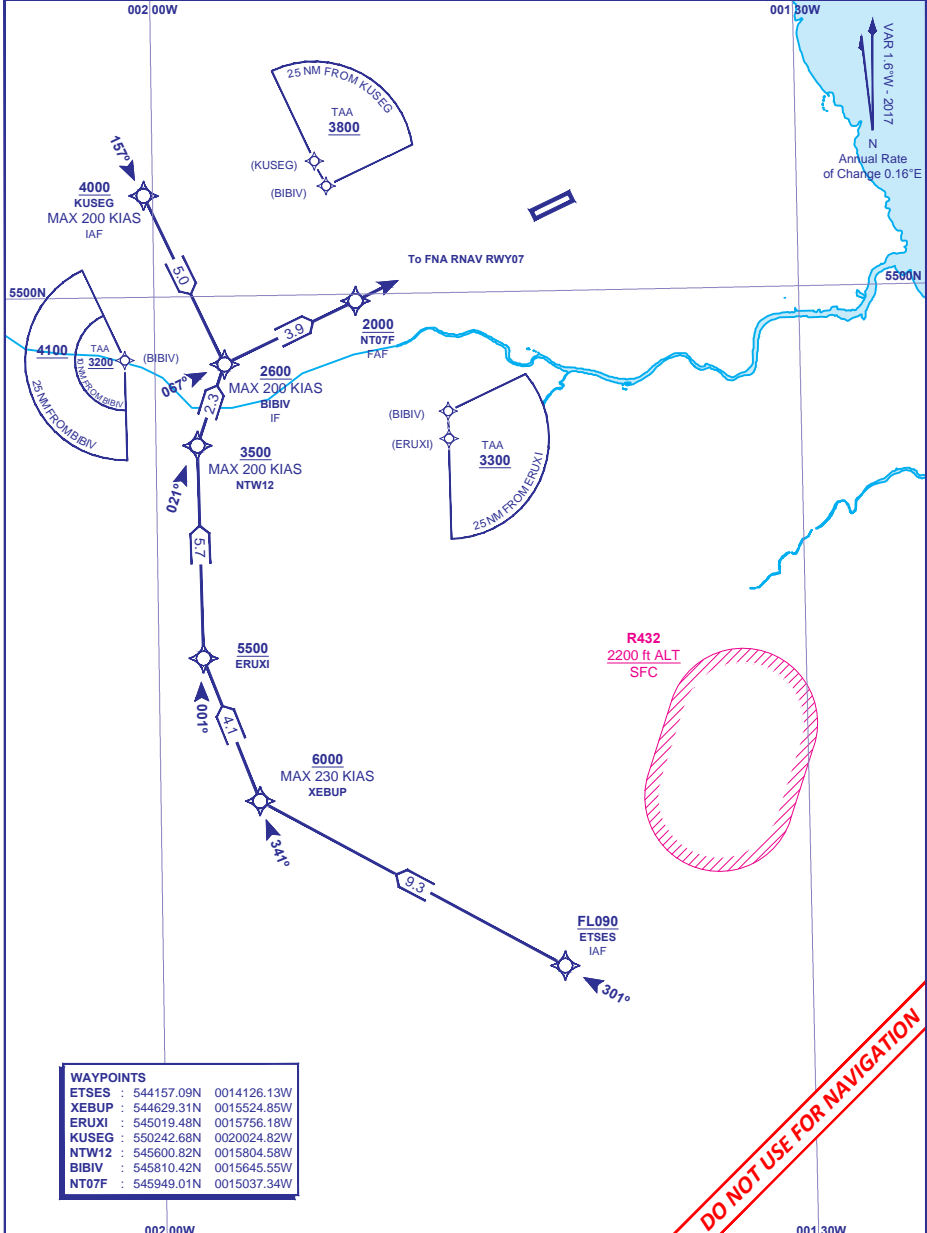
NOTES 1 TBD

CHANGE (MM/YY): CHART VERSION 2.0  
AERO INFO DATE DD MMM YY

INSTRUMENT APPROACH CHART - ICAO

**NEWCASTLE**  
 /NA RNAV (GNSS)  
**RWY 07**  
 (ACFT CAT A,B,C,D)  
 EGNOS **CH 67843 E07A**  
 MIN TEMP **-20°C**  
 TRANSITION ALTITUDE **6000**

 MSA 25NM ARP	APP 124.375	NEWCASTLE APPROACH	AD ELEVATION 265
	TWR 119.700	NEWCASTLE TOWER	THR ELEVATION 263
	121.725	NEWCASTLE GROUND	OBSTACLE ELEVATION
	RAD 124.375, 125.825	NEWCASTLE RADAR	1596 AMSL (1243) (ABOVE THR)
	ATIS 118.375	NEWCASTLE ATIS	BEARINGS ARE MAGNETIC

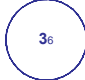


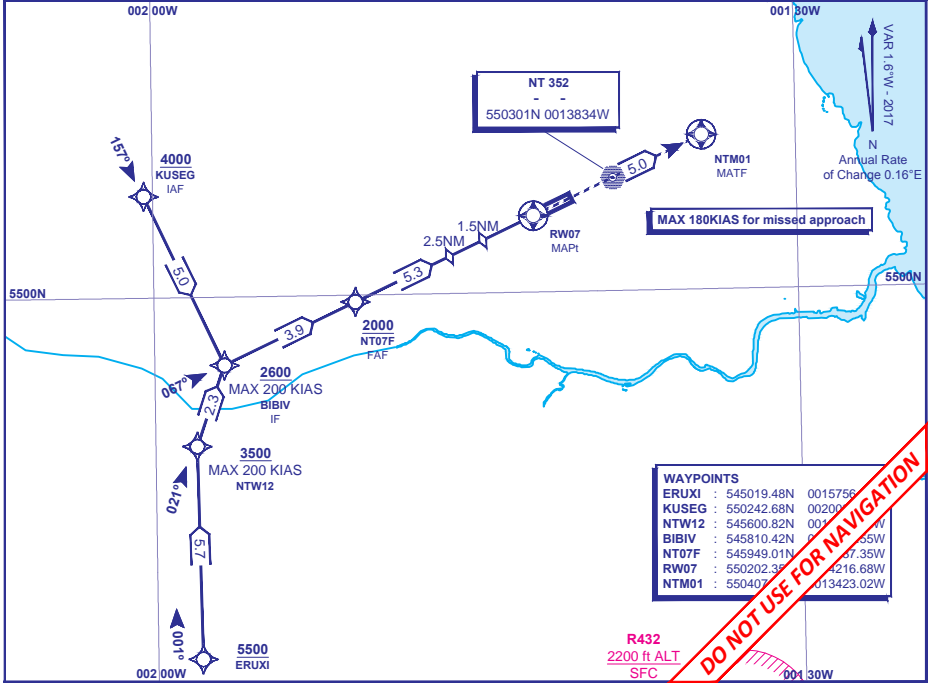
WAYPOINTS	
ETSES	: 544157.09N 0014126.13W
XEBUP	: 544629.31N 0015524.85W
ERUXI	: 545019.48N 0015756.18W
KUSEG	: 550242.68N 0020024.82W
NTW12	: 545600.82N 0015804.58W
BIBIV	: 545810.42N 0015645.55W
NT07F	: 545949.01N 0015037.34W

CHANGE (MM/YY): CHART VERSION 2.0  
 AERO INFO DATE DD MMM YY

INSTRUMENT APPROACH CHART - ICAO

NEWCASTLE

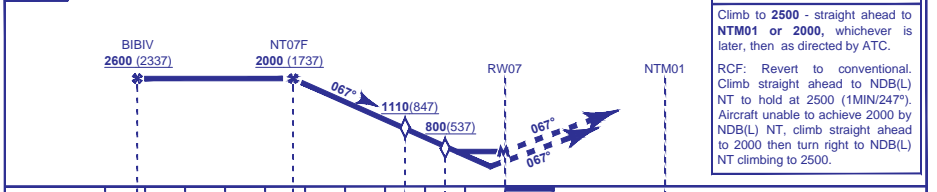
 MSA 25NM ARP	APP 124.375	NEWCASTLE APPROACH	AD ELEVATION 265	FNA RNAV (GNSS) <b>RWY 07</b> (ACFT CAT A,B,C,D)
	TWR 119.700	NEWCASTLE TOWER	THR ELEVATION 263	
	121.725	NEWCASTLE GROUND	OBSTACLE ELEVATION	EGNOS <b>CH 67843 E07A</b> MIN TEMP -20°C TRANSITION ALTITUDE <b>6000</b>
	RAD 124.375, 125.825	NEWCASTLE RADAR	1506 AMSL (1243) (ABOVE THR)	
	ATIS 118.375	NEWCASTLE ATIS	BEARINGS ARE MAGNETIC	



RECOMMENDED PROFILE VNAV - VERTICAL PATH ANGLE 3.0°, 318 FT/NM, LNAV - Gradient 5.24%, 318 FT/NM

NM to RW07	5	4	3	2	1
ALT (HGT)	1910 (1647)	1590 (1327)	1270 (1007)	950 (687)	630 (367)

TCH 51



Aircraft Category		A	B	C	D	Rate of descent	G/S KT				
		FT/MIN	FT/MIN	FT/MIN	FT/MIN		FT/MIN	FT/MIN	FT/MIN	FT/MIN	FT/MIN
OCA (OCH)	LPV	463 (200)	463 (200)	463 (200)	463 (200)		160	140	120	100	80
	LNAV/VNAV	565 (302)	575 (312)	585 (322)	595 (332)		850	740	640	530	420
	LNAV	700 (437)	700 (437)	700 (437)	700 (437)						
VM(C)OCA (OCH AAL)	Total Area	750 (485)	830 (565)	1040 (775)	1040 (775)						

NOTES 1 TBD

CHANGE (MM/YY): CHART VERSION 2.0

AERO INFO DATE DD MMM YY